

At Sandy High

Reading to gain push during fair

Reading will be given a push during a Sandy High School student book fair slated April 18-20. The book fair will be open for students to browse and

purchase books from 7:30 a.m. to 3 p.m. on both days.

Ferguson, Allen Lowe and Shannon Owens.

A spokesman for the high school said the purpose of the fair is to encourage as student interest in reading and in building home libraries. It is hoped that the money earned will be used to start a student store.

A variety of reading interests will be represented at the fair, including classics, fiction, biographies, adventure stories, science, nature, crafts, mystery and reference books.

The communications department is sponsoring the event, with Doug Spary serving as book fair chairman. Committee members include Rachel Craig, Minda

The committee is working with Educational Reading Service, a professional book fair company, to furnish a selection of books for the three-day event.

Camp Fire seeks adult volunteers

Adult volunteers are needed for two summer day camps sponsored by the Mt. Hood Council of Camp Fire. Camp Fire will provide training, resource people, materials and support, said a spokesman for the organization.

Milwaukie and Molalla are the sites for the camp which begins July 10 and runs for two weeks.

A site director who is responsible for on-site supervision is needed, along with counselors to work and play with groups of 8-10 children. A person in charge of supplies and equipment and a first aider are also being recruited.

Any adults willing to share their talents through

workshops on nature, outdoor awareness, hiking, fire building or similar skills are encouraged to contact the Mt. Hood Council, 653-2600.

PORTLAND'S ONLY FOOSBALL SPECIALTY STORE



We have a 3-year warranty on all our tables

OTHER TABLES STARTING AS LOW AS \$239.00

There are many substitutes. Don't sacrifice quality for price. Ask about the difference.

Reg. \$479

NOW Thru April 31st

\$419

Regular Sunday night D.Y.P. TOURNAMENT \$75.00 Guarantee (Minimum 25 players)

FOOSBALL PRO SHOP and AMUSEMENT CENTER

10630 N.E. HALSEY PORTLAND, OREGON 97220 256-3930



Builders officers elected

OFFICERS FOR Sandy Grade School's new Builder's Club pause before their first meeting. From left to right are president Randy Carmony, treasurer Audrey Chapman, vice president Erica Neuenfeldt and secretary Suzanne Jones. The new club is aimed at building leadership abilities and providing services for the school. Dave Emerson acts as Kiwanis advisor for the group.

Thrifty Oil Co.
667-4292
Prices Subject to Change
40.9
500 Gal. & Up
41.9 COD
225-499 Gal.

Parking ordinance under consideration

Three proposals which would reduce the required size of a parking space under the county zoning ordinance will be considered April 17 by the Clackamas County Board of Commissioners.

According to a spokesman for the county, each proposal reduces the size of a parking space from 10 by 20 feet to 9 by 20 feet.

One proposal would allow a reduction to 8½ by 16 feet for parking spaces in excess

of the number required under the ordinance. The proposal recommended by the planning commission would allow up to 20 percent of the required parking spaces to be reduced to 8½ by 16 feet. Proposed dimensions for parallel parking spaces is 8 by 22 feet.

The commissioners will meet at 10 a.m. in Room 201 of the Clackamas County Courthouse.

Kaffee Klatsch plans mother-daughter night



Renee Greenige

Sandy Kaffee Klatsch will sponsor its annual Mother-Daughter night on Tuesday, April 18.

This 7:30 p.m. session of Kaffee Klatsch is designed so women may bring their daughters, mothers, grandmothers or great-grandmothers.

"If you haven't one to bring, adopt one or two for the evening," suggests a member of the group.

Music during the evening will include the debut of the "King's Kids Kwyer" and

Debby Lamb singing, "You Light Up My Life." Speaker for the session will be Renee Greenige.

She is on the staff of Easthill Church in Gresham and will discuss praise and how it relates to a Christian's relationship with God. The title of her talk is "Out of the Mouths of Babes."

Kaffee Klatsch is held at St. Michael's Hall in Sandy the third Tuesday of each month.

Weekly Bible studies are held in conjunction with Kaffee Klatsch. Discussion topics include marriage, motherhood, homemaking and women's needs. Babysitting is provided. For more information or a ride to Kaffee Klatsch, call Marie Wilson at 667-0734 or Charlene Poston at 668-7614.

0-0-0

Liechtenstein's major export is false teeth. Exports at one time reached a peak of 30 million pairs a year.



WHEN YOU CONSIDER THE ADDED SAFETY AND PERFORMANCE OF RADIAL TIRES, EVERYONE CAN NOW AFFORD THEM!



As Low As

30,000 MILE GUARANTEE FOR American and Full Size Cars

\$35⁹²

Plus '1.84 F.E.T.



YOUR LES SCHWAB TIRE CENTER BACKS EVERY PRODUCT, EVERY SERVICE AND EVERY SALE WITH EVEN MORE THAN THE FAMOUS SCHWAB WARRANTIES WE BACK UP EVERY SALE WITH OUR REPUTATION. YOUR CONTINUED SATISFACTION IS OUR MOST IMPORTANT GOAL.

MONARCH
Double Steel Belted
RADIAL
35,000 Mile Warranty

New Reduced Prices

SIZE	PRICE	F.E.T.
AR78X15	35.92	1.84
BR78X13	39.81	1.95
CR78X13	38.84	2.14
BR78X14	39.81	2.02
CR78X14	38.84	2.26
DR78X14	40.76	2.25
ER78X14	41.75	2.36
FR78X14	43.69	2.51
GR78X14	45.19	2.65
HR78X14	46.66	2.82
GR78X15	45.19	2.75
HR78X15	46.66	2.94
LR78X15	49.52	3.22

ASK ABOUT OUR SPRING DISCONTINUED SPECIALS Up to 20% savings on many tires

SIZE	PRICE	F.E.T.
BR78X13	40.73	2.32
DR78X14	44.61	2.32
ER78X14	45.99	2.40
FR78X14	47.79	2.58
GR78X14	50.05	2.76
HR78X14	52.64	2.96
GR78X15	51.29	2.83
HR78X15	54.00	3.03
LR78X15	57.77	3.34

FREE MOUNTING . . . TERMS AVAILABLE

La Vine's SHIRTS-N-STUFF
AT ROCKWOOD LANES

Featuring:

QUALITY T-SHIRTS
For Men, Women and Children
PLUS the largest selection of
IRON ON TRANSFERS
In the area: Cute, Funny, Naughty, and Current Hit Movies

- LETTERING -

In Flock, Prism, Multi Color Prism, Calico etc., for printing your name, message, gag or what have you. Add distinction to your T-Shirt. "If the Best at Lowest Prices fills your needs, see us!"

Monday thru Friday 10 to 7
Saturdays 12 to 9. Closed Sundays

Jean & Curley
18500 S.E. Stark
Portland 665-2123

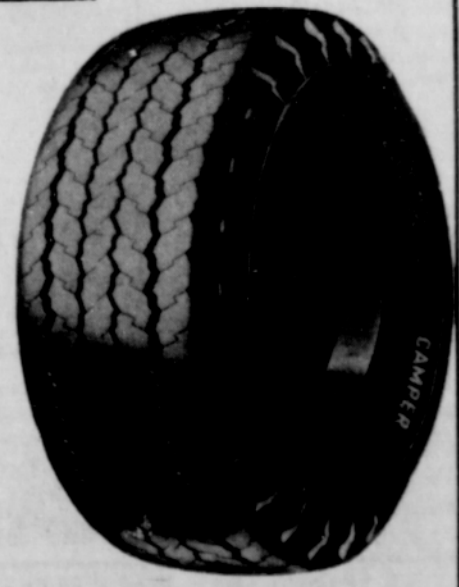
ARMSTRONG HWY.
12X16.5 10 Ply
SPECIAL \$67²⁰

Plus \$6.05 F.E.T.

390 E. Burnside
Gresham 666-9496
7304 SE 82nd - Portland
Phone 777-1447

Multi-Mile Hwy. Camper
For Your Camper, Pickup or Motor Home

SIZE	PRICE	F.E.T.
8.00X16.5 6 ply	47.03	3.26
8.00X16.5 8 ply	51.83	3.42
8.75X16.5 8 ply	54.67	3.92
9.50X16.5 8 ply	59.25	4.46



Or Use Our Handy Les Schwab Credit Plan

LES SCHWAB Tires
HOME OF THE SUDDEN SERVICE BOYS!

Hours
Mon.-Fri.
8 A.M. - 6 P.M.
Sat. 8 - 5