

# Fabric

WHOLESALE

April 5 through April 18, 1978

## QUILT BATTING

3.3 oz. 100% polyester  
47" wide, reg. \$1.19 yd.

**99¢** yd.

## GINGHAM CHECKS

reg. \$1.69 yd. 44"/45" wide, poly/cotton blend, 12 colors to choose from! 3 sizes, 1", 1/4", 1/8" checks! great for shirts, blouses, dresses, quilts, and crafts!

**\$1.29** yd.

## OUTING FLANNEL

all solids, and all prints  
reg. \$1.69 yd. to \$1.99 yd.

**\$1.29** yd.

## ALL QUILTS

cotton quilts, robing quilts, outerwear quilts, placemat quilts, reg. \$2.99 yd. to \$6.49 yd.

**20% OFF**  
THE REGULAR PRICE!

## WARM-UP FABRIC

made of Keyrolan® from Blue Ridge Winkler. This was the fabric worn by the U.S. Olympic teams! Keyrolan® is a triacetate/polyester blend that allows exceptional mobility, lightness of weight and durability ideal for active sportswear! 48" wide

**\$3.79** yd.

## AMBROSIA

1/2 weight polyester from Burlington, super for soft feminine looks!

**\$2.99** yd.

## POLYESTER DOUBLE KNITS

including all ponti, crepe, solids, prints, jacquards, stripes, checks, textured and more!

**\$1.00 OFF** The Marked Price  
reg. \$2.99 yd. to \$4.99 yd.

## COTTON KNIT SALE!

all cotton and cotton blend single knits, double knits, stripes, solids, prints and jacquards, reg. \$1.49 yd. to \$2.99 yd.

**99¢** yd.

## CHARMETTE

Crepe Back Satin, from Skinner 87% acetate/13% nylon, beautiful for a gorgeous flowing look! 44"/45"

**\$3.49** yd.

## ELASTIC

all elastic up to 3/4" wide

**15¢** yd.

## ALL FAKE FUR AND PILE FABRICS

**40% OFF**  
THE MARKED PRICE

reg. \$2.99 yd. to \$19.99 yd.

Don't Miss These Savings!

Prices effective thru April 18, 1978

All items limited to supply on hand

Gresham Mall Betw. K-Mart & Albertsons Gresham, 667-9042

335 N.E. 122nd & Glisan ..... 252-1885  
1928 N.E. 42nd, Hollywood ..... 281-1033  
10480 S.W. Beav. Hills Hwy. .... 646-3181  
15236 S.E. McLoughlin Blvd. .... 659-5713

## Touch of country elegance in home

A touch of country elegance characterizes the Sandy home of John and Marilyn Rowell on Bluff Road.

Ten years ago the Rowells decided that they wanted a place away from their farm, so they moved into an older two-story, three-bedroom home with traditional high ceilings and small rooms.

Mrs. Rowell put personality into the home with a different color scheme for each room to match her changing moods.

"I have to have color changes," she said. "I have a lot of different moods, and I have a different colored room for every mood."

"So many tract homes all have the same color schemes. I know I couldn't live with that."

Marilyn redecorated her home with strong reds, oranges and browns, which she describes as warm colors with a "warming feeling."

But her sewing room converted from a vacated child's bedroom upstairs is a "Lavender Room," with black accent from a chest recovered in black spray paint.

And a special "Persian Room" upstairs bedroom features velvets, maroons and wines with prominent pieces including Persian carpets, rattan shades, Persian wall hangings and an antique urn.

Mrs. Rowell removed legs of dark wood chests for a

different look, and changed hardware on the chests to better match the decor.

An "Aqua Room" upstairs features an antique bedroom set which Marilyn found at a junk sale and antiqued. A canopy bed is covered by a smaller fake canopy so not to dwarf window-edge gardenias, Marilyn's pride-and-joy plants that bloom through the winter in the room and accent the blue-green scheme.

A three-piece antique bedroom set highlights another room upstairs. Marilyn was lucky to find the bed and two chests that once held water basins together in a state thrift sale. She steam-cleaned them out at the farm to unveil and refinish a pretty light oak set.

A small secretarial desk she found in an old barn, and when she found matching legs and restored it, she had the perfect complement in colors to the light oak and accent greens and golds of the room.

The bed's headboard she padded to carry out the Victorian theme.

A master bathroom upstairs has as a centerpiece an old library table which was antiqued in white and silver.

A downstairs mini-bath adjacent to an in-home office displays an oversize wall mirror.

Entry way at the front door features a grandfather clock and soft blues for a mellowing effect.



ELEGANT DINING room of the Rowell home.

Mrs. Rowell adorns the home with hand-picked or donated antiques.

These include an antique Austrian pipe, a sugar scoop in the kitchen, a wood tote converted for a magazine rack, an antique wagon wheel converted to a kitchen rack for utensils, a Chinese brass foot warmer and a clock brought from Austria by Marilyn's parents.

There is a touch of Victorian elegance in the living room, enhanced by high-back chairs.

Chandeliers acquired by Mrs. Rowell at railroad auctions add a taste of country elegance and old-world charm.

A focal point in the elegant living room is a charcoal drawing that Mrs. Rowell did of her daughter, pictured as she would have been attired in Victorian times.

A corner wet bar off the living room features ceramic decanters which Marilyn hand painted.

An adjacent family room-T.V. room carries out a country theme in blues and greens. A country fireplace with antique pieces carries out the theme.

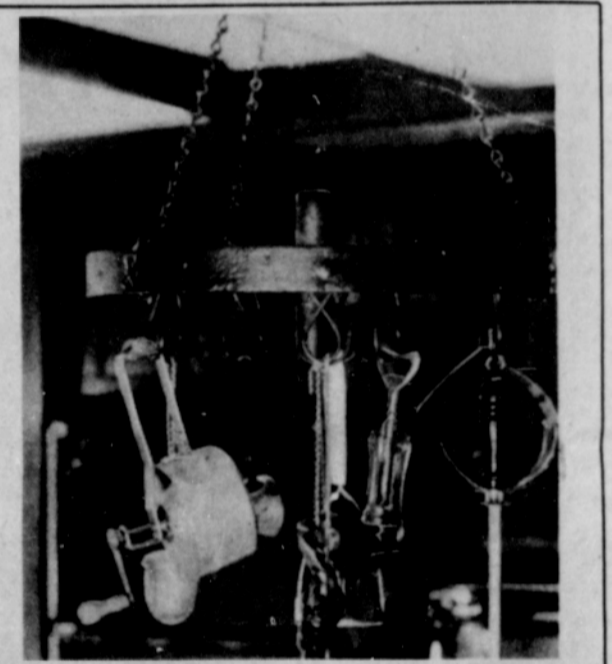
There is a folding partition between the front living room and the television room. It allows for privacy, perfect when the children were still at home.

The Rowells kitchen was recently remodeled in Senwood, a type of gray ash which Mrs. Rowell stained as dark as possible to complement her orange appliances. There are sky lights and a wagon wheel spindle for utensils for a country kitchen flair.

Oranges, reds and browns are warm colors," she said.

The dining room was enlarged by reducing the size of the large utility room off the kitchen in back.

To go with the dining room's French sideboard with original stained glass, Marilyn converted her modern sliding doors to an older appearance with window leading which she simply stuck on.



ANTIQUE WAGON wheel converted for holding kitchen utensils holds an antique sugar scoop in the Rowell home.



## OREGON SYMPHONY ORCHESTRA

### POPS CONCERT

Norman Leyden, Conducting  
Tuesday, April 25, 7:30 P.M.  
GRESHAM HIGH SCHOOL  
Tickets \$3<sup>00</sup>

Available at most Banks & Savings and Loans in the Gresham, Sandy & Troutdale area, and the Gresham Chamber of Commerce (665-1131)

Sponsored by: Gresham Chamber of Commerce in cooperation with the Oregon Arts Commission  
Co-sponsors: First State Bank of Oregon  
Riegelmann's Appliance  
U.S. National Bank of Oregon  
Walker Travel Service

### Pete's Swimming Pools Billiards & Trophies

851 East Powell  
Gresham Plaza at Cleveland

- DOUGHBOY
- COLECO

Above Ground Pools  
\* Swimming Pool  
Chemicals, Parts, etc.

### DART BOARDS AND Cabinets POOL TABLES

All Major Brands



### Golden Gate HOT TUBS AND HYDRO-SPA

Come see our new displays for your Home, and enjoy this Summer in your own Back Yard; fun and healthy too for all the Family.



- Trophies
- Awards
- Plaques
- Engraving

665-7380 665-2255  
Open 9 to 7 Mon. thru Sat.

### ALL YEAR TAX SERVICE

- 48 HR. SERVICE AVAILABLE
- REASONABLE FEES
- PRIVATE INTERVIEW ROOMS
- STATE-LICENSED PREPARERS & CONSULTANTS
- ALL STATE FORMS AVAILABLE
- OPEN EVENINGS & SATURDAYS



SINCE 1964

252-1415  
13909 SE Stark  
EASTSIDE

643-7558  
9952 SW  
Beaverton-Hillsdale Hwy.  
WESTSIDE

775-4358  
6715 SE Foster Rd.  
FOSTER RD.

COLUMBIA BOOKKEEPING SERVICE INC.