

PORTLAND KMARTS OPEN DAILY 10-10; SAT. 10-9; SUN. 10-7

# Kmart®

SALEM KMART OPEN DAILY 10-9; SUN. 11-7 ... gives satisfaction always  
VANCOUVER KMART OPEN DAILY 10-10; SAT. 10-9; SUN. 10-6



## HEAVY DUTY WASHER

Sale Ends April 23 **264**

3 temperatures, 3 cycles, 3 water levels. Cool down care for Perma Press. Extra large capacity.



## ELECTRIC DRYER

Sale Ends April 23 **208**

5 dry setting, 3 drying temperature settings. No iron care for permanent press fabrics. SAVE.



## 17.6 CU. FT. REFRIG.

Sale Ends April 23 **398**

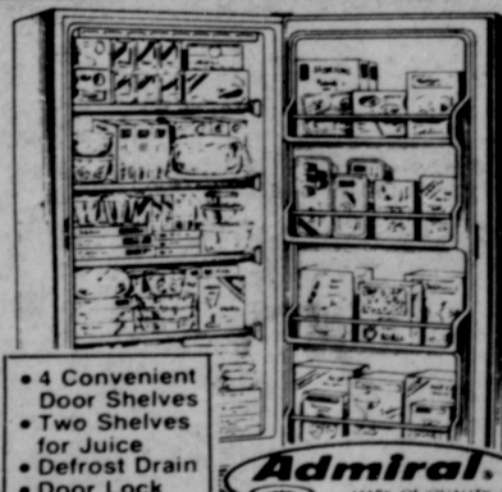
4.65 cu. ft. freezer with 12.94 cu. ft. fresh food capacity, 2 interior shelves. SAVE.



## REFRIG. & FREEZER

Sale Ends April 23 **368**

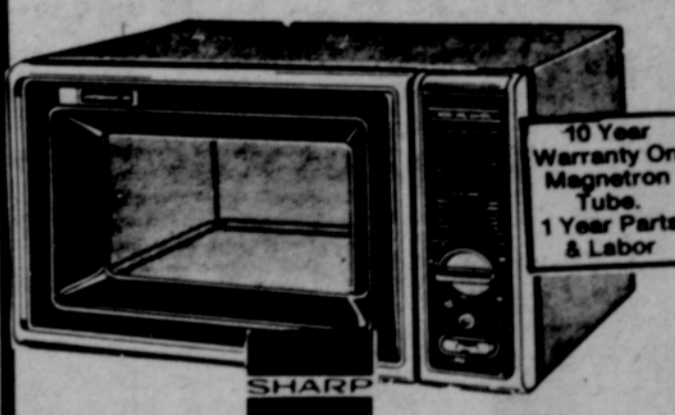
Separate controls for refrigerator and freezer. Twin crispers. 3 interior shelves.



## 13.2 CU. FT. FREEZER

Sale Ends April 23 **228**

28" wide, 4 package deep door shelves. 4 freezer shelves, door lock, manual defrost.



## MICROWAVE OVEN

Sale Ends April 23 **268**

Built-in cooking guide, 20 min. timer, auto defrost cycle. Recipe book included. SAVE.

CHARGE IT!  
WE HONOR

BANKAMERICARD

master charge  
THE INTERBANK CARD



## DELUXE STEREO SYSTEM

Sale Price Ends Apr. 23  
Solid state AM/FM stereo, radio-phonograph with 8-track player.

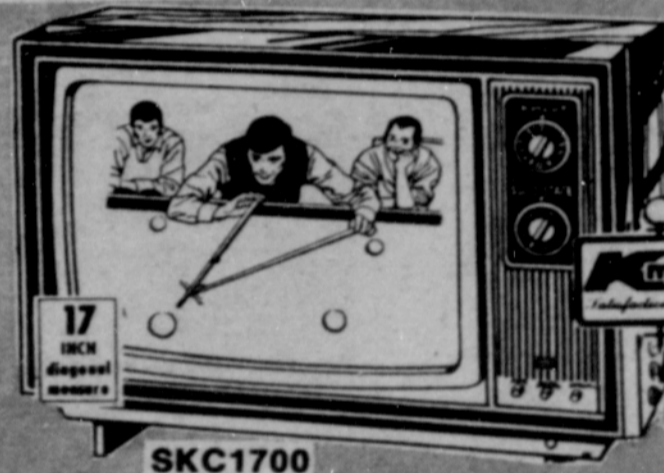
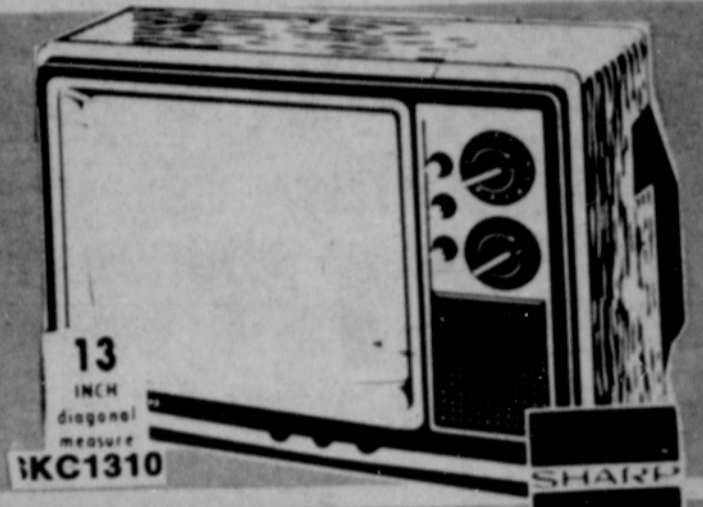
**109**

## 13" PORTABLE

Sale Ends April 23 **268**

"Rapid-on" picture tube, 100% solid state. Long life tuner. Dipole Antenna. SAVE.

1 yr. Parts & Labor



## 17" COLOR TV

Sale Ends April 23 **289**

100% Solid state. Uses up to 50% less energy than our older sets. In line picture tube. Dipole antenna.

## 19" COLOR TV

Sale Ends April 23 **398**

100% solid state state chassis, automatic fine tuning. Rugged plastic cabinet with fruitwood grain finish.



## PORTABLE B&W

Sale Ends April 23 **99**

Lightweight portable 100% solid state chassis. Polystyrene walnut look cabinet. SAVE.

## 25" COLOR TV

Sale Ends April 23 **597**

One button color tuning Auto fine tuning. 100% solid state. All in a beautifully styled cabinet. SAVE.



GU628