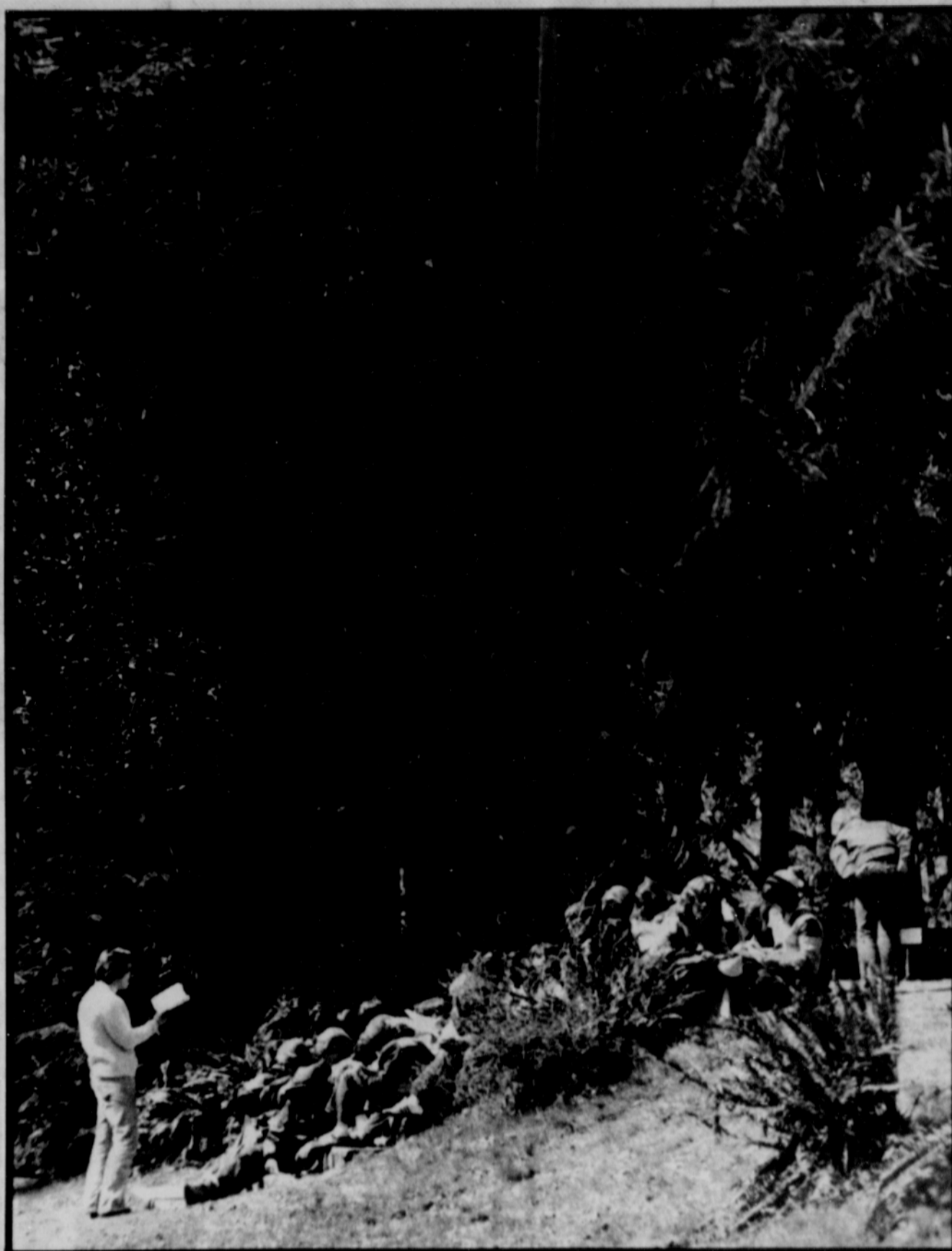




OUTDOOR ED camp director Sandy Cole organizes the line up for lunch.



IN THE shadow of tall fir trees, Outdoor Ed instructor Pat Bowers talks to a class.

Sandy Insurance

All Lines of Insurance & Bonds

REPRESENTING:

United Pacific North West
Unigard Austin Mutual
USF&G St. Paul Life

& Many Others

39051 Proctor Blvd.
P.O. Box 635
Sandy, Ore. 97055

Robert W. Pike - Cliff C. Cross
668-5527

For All Your Insurance Needs

Story/photos
by
Douglas Gantenbein

Outdoor ed kids no babes in woods

What do sixth graders and licorice ferns have in common?

If they're Sandy Elementary Sixth graders the answer is easy; the Outdoor Education program brings the two together at Camp Arrah Wanna in Wemme.

The program, under the auspices of the Sandy School district, is now in its third year of getting grade school kids and the outdoors a little closer.

Intermediate Principal Kevin Stewart, liaison man and coordinator for Outdoor Ed, describes the program as a "classroom extension," a place to learn new things and use more traditional classroom studies.

Students are exposed to four main

topics; soil, water, and plant and animal life. They are treated both as individual units and as parts of a greater "outdoor community."

The youngsters are able to apply what they've learned in mathematics and English classes to take temperatures, and measurements, write reports and hold discussions on these outdoor subjects.

In addition they are given instruction in subjects like survival training, where they learn how to build a fire, make a lean-to, find edible plants and how to act if stranded in the woods.

Although the program focus is on education, recreation is not forgotten and the kids enjoy volleyball, archery, hand crafts and nature hikes.

Evening campfires with skits and singing are also engaged in with gusto.

The campers stay for an entire week, leaving for Arrah Wanna Monday morning and returning to their school Friday afternoon.

In addition to a full time, professional staff, local high schoolers do a tremendous amount to structure and implement the program, according to Stewart.

Still, the emphasis is on education—and kids. Camper Melissa Morrison, who confides she is most fond of soil studies, might have spoken for the whole group when asked what she thought of the "Outdoor Ed program:

Her answer?
An emphatic, "I love it!"

Aglow meets Tuesday

Gloria Kinney, director of Women's Ministries at Corvallis Foursquare Church, will be the featured speaker at a Tuesday, April 26 luncheon meeting of the Wemme Women's Aglow Fellowship.

Reservations are required for the luncheon, which will be at Bowman's Resort in Wemme.

For reservations or more information call Susan Zipprich at 622-4526, Betty Lou Pruitt at 622-3387 or Lorene Ernst at 622-3265.

HOW
CAN I CUT
MY ELECTRIC
USE BY 10%?

One place to start is to lower your thermostat to 68° during the day, 58° at night. It could cut your heating use up to 12%!

Check your heating thermostat against an indoor thermometer, to make sure it's accurate. Higher settings waste 3% per degree. We've got more tips in our free Watt Watchers' Guide at any PGE office.

PGE



SANDY ELEMENTARY student Keela Harris points out a Licorice Fern. The plant gets its name, she says, because "it tastes like licorice."

Western Auto

Closeout SALE

Sandy, Ore.

ELECTRIC DRYER

Reg. \$240

NOW

\$195⁰⁰

BABY BED & MATTRESS

Reg. \$87.50

NOW
\$65⁰⁰

8-TRACK AM/FM STEREO SET

Reg. \$240.00

NOW
\$195⁰⁰

MILLER'S EXT. HOUSE STAIN

\$5⁰⁰ Gal.

SCOTT'S GRASS SEED

40% OFF

CORELLE CORNING WARE

20% OFF

Fuel pumps, generators, starters, fan belts, brake shoes (Older cars)

UTILITY BELTS

\$1⁵⁰ EA.

SHOCK ABSORBERS

\$10⁰⁰ PAIR

RIFLE CASES

\$5⁰⁰ & UP

BICYCLE PARTS

20% OFF

Western Auto

38776 Proctor Blvd. Sandy 668-4363