

# SPRING TIME IS VALUE TIME!



**2 '76 PINTO RUNABOUTS**  
2300 cc eng., 4 spd., PS, PB, exterior decor group, etc., silver or dark green metallic ..... Ea. **\$3298**

**'75 MUSTANG**  
2300 cc, auto, PS, ..... **\$2998**

**'75 GRANADA**  
2 dr., 250 C.I., 6 cyl., auto, PS, PB, silver w/red vinyl interior ..... **\$3498**



**'73 TORINO**  
Grand Sport V8, auto, PS, PB, mag wheels, vinyl top, etc., only 34,600 miles ..... **\$2898**

**'75 OLDS CUTLASS**  
4 dr., V8, auto, PS, PB, vinyl top, etc. .... **Special \$2998**

**'74 PINTO WAGON**  
2300 cc, 4 spd ..... **\$2498**

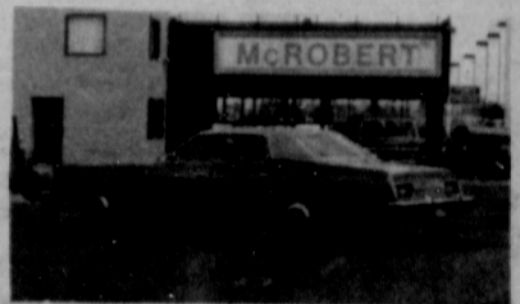


**'73 MUSTANG**  
351 V8, auto, PS, PB, tape deck, mag wheels, spotless, only 26,000 miles .. **\$3598**

**2 '76 GRANADAS**  
2 dr. or 4 dr., 302 V8 auto, PS, PB, fact. air, protection GP, etc., low mileage, rental units ..... Your Choice **\$4698**



**'75 "ELITE"**  
2 dr. HT, 400 V8, auto, PS, PB, fact. air green w/white vinyl top plus cloth split bench interior ..... **\$4398**



**'74 LTD BROUGHAM**  
4 dr., w/split bench, 400 V8, auto, PS, PB, fact air, pwr. windows, just 29,000 miles ..... **\$4298**

**'74 PONTIAC VENTURA**  
V8, auto, PS, PB, fact air, low miles .. **\$2698**

**'75 PONTIAC LeMANS**  
4 dr., 6 cyl., auto, PS, PB, fact. air, 17,000 miles ..... **\$3798**

**'75 MERCURY "MONARCH"**  
4 dr., 351 V8, auto, PS, PB, fact. air .. **\$3998**

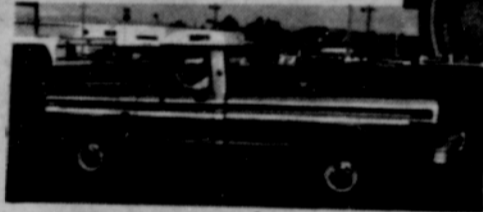


**'74 GRAN TORINO**  
Brougham, 2 dr., 351, V8, auto, PS, PB, fact. air, tape, etc. .... **\$3698**

**KEEP  
ON  
TRUCKIN**



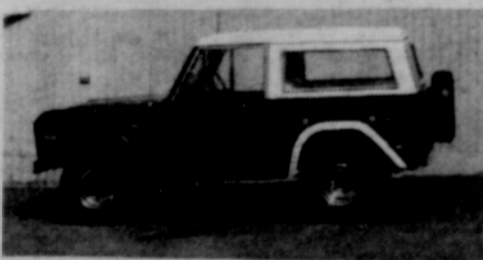
**KEEP  
ON  
TRUCKIN**



**'76 FORD F150 4X4**  
Explorer pkg. V8, auto, PS, PB ..... **\$5498**

**'75 FORD F-250**  
390 V8, auto, PS, PB, camper special, aux. tank, etc. .... **\$5098**

**'75 FORD F-150**  
390 V8, auto, PS, PB, plus canopy ..... **\$4798**



**'75 BRONCO**  
Sport 302 V8, auto, PS, PB, chrome wheels, big tires, etc., just over 23,000 miles ..... **\$5398**

**'76 FORD F-100**  
.6 cyl., stand. trans., R&H, etc. just over 12,000 miles ..... **\$3998**



**2 '76 DATSUN PICKUPS**  
Both 4 spd., w/bumper, mirrors, both have canopies. .... Your Choice **\$3498**

**'76 JEEP**  
Commando wgn. 4x4, sharp red wagon with economical V6 engine, 3 spd trans., R&H, traction rubber, etc. Just over 44,000 miles ..... **\$2598**

**'74 CHEV. 1/2 TON**  
350 V8, auto, PS, PB, bright yellow. Sharp! ..... **\$3798**

**'73 TRAVELALL**  
International, big V8, auto, PS, PB, 44,000 miles .. **\$3298**

**'72 CHEV. 3/4 TON**  
V8, auto, PS, PB, brand new tires ..... **\$2698**

**'76 FORD F-250**  
Ranger camper special, 390 V8, PS, PB, with camper tie down system big GVW ..... **\$5598**



**'76 CHEV. "SHORTY" 4X4**  
350 V8, auto, PS, PB, traction tires and canopy ..... **\$5498**

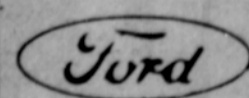
## NEW SUMMER HOURS . . .

**WE WILL BE OPEN UNTIL 9 P.M. ON WEEKDAYS AND UNTIL 6 P.M. ON SATURDAY**

**McROBERT**

243rd. & S.E. POWELL

SINCE  
1930



**FORD**

GRESHAM 665-0101