

Somewhere...

over the Bolster rainbow, you'll find the home you've dreamed of.



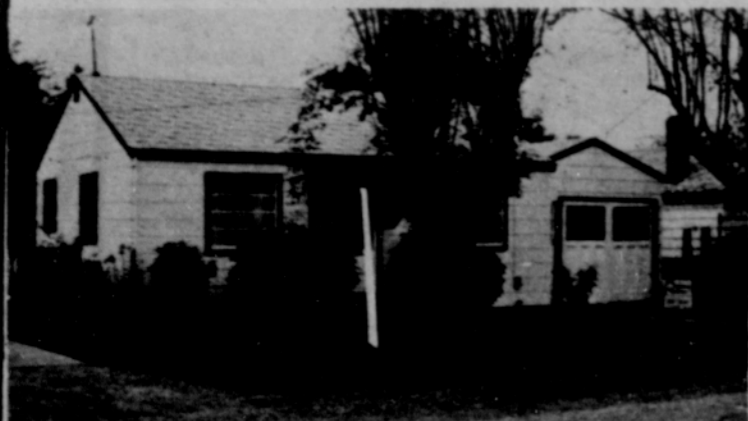
Buzz us for a free market evaluation of your home.

# Bolster &

associates, inc. REALTORS

590 N. Main St., Gresham

10010 N.E. Halscy, Portland



### GRESHAM CENTER

2 BDRM in super convenient area. Single garage, nice garden spot. \$23,900. 667-3660 eves. 666-2131.



### SUPER S.E. RANCH

CUSTOM BUILT 3 BR, one and two-third bath, ranch style home. Beautiful backyard with 10 x 15 outstanding outbuilding, finished garage, Franklin High. \$38,500. 667-3660, eves. 663-5360.



### MEDITERRANEAN RANCH

NEW HOME on wooded secluded street in the city limits of Gresham. 3 bdrm, family rm and dble gar. \$50,500. 667-3660, eves. 665-5953.



### BELIEVABLE

IMAGINE THIS, a 4 bdrm ranch, custom built, full basement, view of Mt. Hood, 5 minutes from center of Gresham, 2 frpic, formal dining room, family room, double garage, plus an extra lot valued at \$13,000. Priced at \$68,700. 667-3660, eves. 666-2131.



### REYNOLDS HIGH TRI LEVEL

DEADEND STREET, fantastic for children, 4 bdrm, two and two-third baths, fireplace, carport. \$47,500. Assume St. Vet loan. 667-3660, eves. 665-8868.



### MOBILE HOME WITH ACREAGE

1968 VILLAGER. 12 x 63 with 8 x 20 tip out enclosed porch. 7.38 acres with fruit trees and timber. 2 wells and TD 6 cat. \$36,700. 667-3660, eves. 666-2131.



### TRADITIONAL FARM HOUSE

ON 1.72 ACRES in Barlow School District. Plenty of room to grow. \$69,500. 667-3660, eves. 667-2579.



### TIMBERLINE RIM CHALET

SUPER CHALET w-fantastic loft, new carpeting, spiral staircase, fireplace and Club House facilities. \$28,900. 667-3660 eves. 666-2131.



### CENTENNIAL HI

IMAGINE THIS, a 4 BR ranch on one-third of an acre in the city, vaulted ceilings and large FR, corner lot, a must, see inside. \$36,000, 667-3660, eves 665-5953.



### FHA TERMS

LARGE HOME w-4 bdrms, lrg living rm w-fireplace, full bsmt, near Jefferson Hi School. \$23,500. 667-3660, eves. 667-2579.



### JUNE HEIGHTS RANCH

LUXURY PLUS convenience. Shake roof, Mediterranean ranch w-3 bdrms, family rm, dble gar on corner lot. \$54,500. 667-3660, eves. 665-5953.



### SAVE ON HEAT!

BEAT THE high cost of heating bills in this 3 bdrm ranch featuring a custom frontier stove, family rm in full bsmt, fenced yard w-garden spot. Just 2 blks to park and school. \$41,950. 667-3660, eves. 666-7236.



### JUNE HEIGHTS

A SUPERB 4 BR split entry on a quiet cul-de-sac. Park like setting. This one has everything, FR, plus rec. room, double garage, split shake roof, alum siding. \$65,000. 667-3660, eves. 663-5360.

### 56.50 ACRES

SUPERB PRODUCING land. Perfect rolling acreage w-9000 ft. of tiling. Estacada area. \$115,000. 667-3660 eves. 666-2131.

SHOULDN'T YOUR HOME BE FEATURED HERE?

Call us Now for Free Market Evaluations

Gresham  
667-3660

N.E. Gateway  
256-0011

For Information, Call 667-3660