

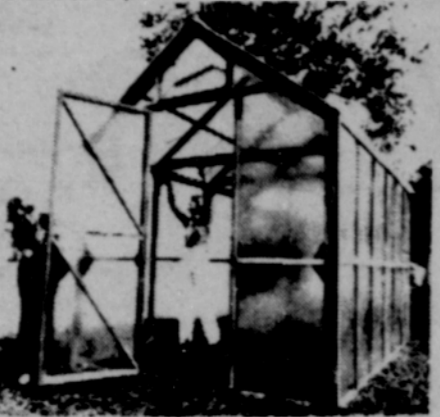
IT'S PLANTING TIME

LET'S GET GROWING!



Build a greenhouse this weekend.

If you want a good home greenhouse at a reasonable cost... build it yourself with FILON HOME GREENHOUSE PANELS.



Ideal for build-it-yourselfers. Filon Panels are lightweight, easy to handle, yet extremely strong and require minimum support. Shatterproof, they transmit more light than glass. Specially formulated for greenhouse gardener's needs.

FREE BUILDING PLANS
#742 Corrugated Panels
4 oz. with Solar Prism Surface

26" x 8' Reg. \$8.40 Spec. \$7.55
26" x 10' Reg. \$10.50 Spec. \$9.42
26" x 12' Reg. \$12.60 Spec. \$11.51

Commercial Greenhouse Panels Also Available

TAP PLASTICS, INC.

OPEN 9:00-6:00 Daily 9:00-4:00 Sat. 12404 N.E. Halsey St. Portland, Oregon 97230 256-3080

BankAmericard MasterCharge Lots of Free Parking

HELP! HELP!

We're 'full' up. Our plants need a new lovin' home

Fuchsias 45¢ to '7
Geraniums 65¢ and 75¢
Begonias 65¢ to '5

IVY BANKS NURSERY
11632 SE Orient Dr.
Boring 663-4782

Owen's Landscaping

Residential * Commercial

- * Sod and Seed Lawns
- * Shrubs and trees
- * Sprinkler Systems
- * Rock Walls

FREE ESTIMATES, FAST, PROFESSIONAL REFERENCES

Lic. 668-5101 Bonded

PLANT NOW

ENJOY LATER!

1st Quality Dwarf and Semi-Dwarf FRUIT TREES

- * Free fertilizer with each tree

Rhodos & Azaleas Large or Small

- * Lge. Shade Trees
- * Flowering Trees
- * Pink Dogwood
- * White Dogwood

- * Grapes
- * Blueberries
- * Veg. Plants
- * Strawberries
- * Geraniums, Upright and Hanging Baskets

FUCHSIA PLANTS All Sizes

Lge. hanging baskets of Fuchsias

ALL KINDS GARDEN SEEDS

Lawn Seed * Full line of fertilizers
* Dormant spray * Insecticides
* Garden Hardware

One free bunch of cut flowers with a minimum \$10.00 purchase

FOUR OF SPADES NURSERY

22566 SE STARK ST. GRESHAM 665-2064



FREE HORSE manure, Wind Sang Farms, 1024 SE Jackson Park Road, Troutdale, W-18m

NEW LAWN construction, sod or seed state licensed & bonded, 665-2585. A-23f

FOR SALE Blackcup plants, 10 cents each, 668-4559. B-17f

CHICKEN MANURE, \$10 large pickup load. We load, 637-3453. C-11f

COW MANURE, 2 1/2 yard load delivered, \$20, 663-3812. F-11f

BALLED & BURLAPED Japanese Blackpine and Alpine for 3-5' \$7.00 each, 668-5245. M-17f

SEED POTATOES 5 cents pound, Kennebec and Red, 668-4559. B-17f

BARGAIN. RHODIES, azaleas, dwarf fruit trees, arborvitae, pink dogwood, white birch, red leaf maples, weeping cherries, Pleasant Valley Nursery, 666-5402. S-11f

U DIG fir trees, up to 6 ft., \$2.50. Bring shovel & container. No Saturday calls, 658-3317. R-16f

SAWDUST 3 units for \$36.00 delivered, 760-3533. R-11f

YOU DIG CURLY weeping Willow trees, \$4 and azaleas, \$2.50, 663-3743. B-16f

COME TO CORBETT Grange Flea Market, Saturday and Sunday, April 23 and 24, 2 year old Rhodies and azaleas, \$1.00 each, Blooming geraniums 75 cents each. G-16f

BUCCANEER & TREASURE Azaleas, 18" - 24" spread \$4.50. Lane's Nursery, 663-4805. L-21f

NEW LAWNS installed, seeded or sod for instant beauty. Call Lane, 663-4805. L-21f

AZALEAS, Junipers, Fitters, Pyramids, Rhodies, Ground Cover. Yes's Nursery, 3 miles E. of Gresham Golf Course on Division, 665-2887. Y-19f

CEDAR BARKDUST in 4 unit loads, \$80. Sawdust in 4 unit loads, \$60, 663-4221. G-18m

TOP SOIL, Rich sandy loam from vegetable farm. Cow manure, 253-1991. Call after 4 and Saturday and Sunday. C-11f

HORSE FERTILIZER \$4.00 pickup load, U load, No Saturdays, 665-8828. W-16f

Nice Large TAM JUNIPER \$1 ea. U-Dig Porter Nursery, 4 Miles East of Sandy on Highway 26 668-6285 P-18f

SHRUBS, TREES, RHODODENDRONS Good selection of quality plants Bargain Prices 13 MILE NURSERY Open Daily 10-4 S.E. Stark & 235th Ave. 11f



"TIME TO PLANT"

Trees - Flowering & Shade
Fruit Trees - Dwarf & Standard
Rhododendrons - Potentilla & Others

H&H Payne & Son Nursery
Corner of S.E. Telford & Callister Rd.
666-1433

If no answer Call 761-9515
Reasonable Prices

Residential Landscaping **BY WAYJO**

Register now for spring and summer lawn maintenance

Call Evenings and Weekends

Free Estimates Quick Service
Joe Evenings and Weekends Wayne
663-4321 775-8890

Dried and Silk Floral Arranging Classes begin April 19 7 P.M.-10 P.M.

6 Week Course - Tues & Wed. each week
101 N. Main, Gresham
INSTRUCTOR RALPH MENDOZA
FOR FURTHER INFORMATION
666-7928 667-1239

HARRIS SEEDS WEST

Division of Joseph Harris Co., Inc.

GET OFF TO A GOOD START WITH **HARRIS SEEDS**
For your spring garden, choose from our wide selection of vegetable and flower varieties and hybrids

NOW AVAILABLE!!

HARRIS ROCKET MIX SNAPDRAGONS
Sensational Tall Hybrids Sturdy Growth Magnificent spikes in a blend of seven rich velvety colors
Garden Pak **89¢**

Hanging Basket LOBELIA SAPHIRE VARIETY TRAILING HABIT
Deep Blue Flowers with White Eye
12 Plants **89¢**

Harris Hybrid Tomato Plants MORETON JET STAR REDPAK
Abundant yields of big beautiful fruit. Highly rated for their superb quality
Individually potted **30¢ ea.**
4 for **\$1.00**

SPECIAL!! THRU APRIL 25 ALASKA FISH EMULSION
Non-burning organic fertilizer for Begonias, Vegetables and other flower plants
1 Gal. garden size Reg. \$6.50
Now \$4.99

HARRIS SEEDS WEST
1313 E. Powell
665-1168
Mon.-Sat. 8-5 Sun. 12-5