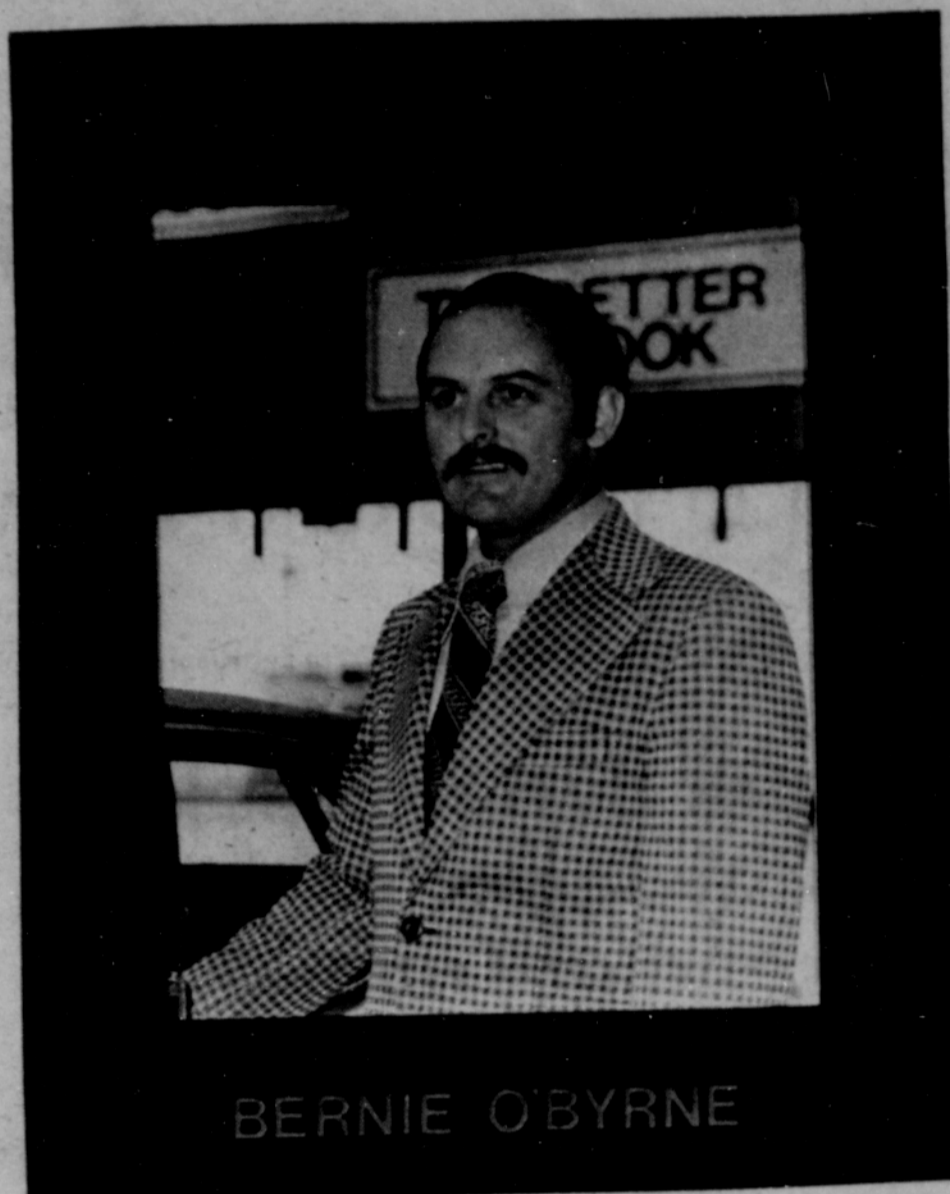


# Top Salesman for September



BERNIE O'BYRNE

Stop in and see Bernie O'Byrne whether you are in the market for a new or used automobile.

## MORE USED CAR VALUES FROM McROBERT FORD

 <p><b>'75 THUNDERBIRD</b> Full power, cloth split bench, light green w/dk. green vinyl top &amp; trim. <b>\$6798</b></p>	 <p><b>'72 AUDI - 100LS</b> 4 dr., 4 spd., tape deck, white interior <b>\$2898</b></p>	 <p><b>'75 VW RABBIT</b> 2 Dr., features and comfort group <b>\$2298</b></p>	 <p><b>'75 TOYOTA</b> 4 Dr., 5 sp. radials <b>\$2498</b></p>	 <p><b>'75 MONZA TOWNE CPE.</b> 4-cyl., 4 spd., 19,000 mi. <b>\$2898</b></p>
 <p><b>3 '76 ELITES</b> All very nicely equipped Air cond, etc. all low mileage, local cars <b>\$5898</b></p>	<p>Your choice <b>\$2298</b></p>	 <p><b>'76 MAVERCK 4 DR</b> 250 cu. in 6 cyl. Cruise-o-matic, PS, low mileage, roomy compacts <b>\$3498</b></p>		

## CHECK OUT THE SELECTION & VALUES LISTED BELOW

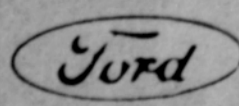
<p><b>'73 BEL AIR WGN.</b> 350 V8, auto, PS, PB, factory air <b>\$2498</b></p>	<p><b>'70 FORD GAL.</b> 2 dr. hdtp., 351 cu. in. V8, PS, air cond. <b>\$1098</b></p>	<p><b>'75 FORD F-250 4X4</b> Features a V8 with auto. trans., PS, PB, and factory air <b>\$5298</b> <i>Special this week for</i></p>
<p><b>'76 GRANADA</b> 2 Dr., 302 cu. in., V8, auto, PS, PB, metallic dk. brown <b>\$4698</b></p>	<p><b>'74 PINTO SQUIRE</b> 4 cyl., auto, air cond., 18,000 mi. <b>\$2998</b></p>	<p><b>'75 GMC 3/4 TON</b> Sierra Grande, 454 V8, auto, PS, PB <b>\$4989</b></p>
<p><b>'75 FORD LTD</b> 4 dr., auto, PS, PB, air cond., cruise control, 30,000 mi. <b>\$4698</b></p>	<p><b>'72 MAZDA RX-2</b> Coupe, bright red, 4-spd. transmission <b>\$1298</b></p>	<p><b>'72 GMC 3/4 TON</b> V8, auto, 50,000 <b>\$2998</b> <i>SOLD</i></p>
<p><b>'75 GRAN TORINO WGN.</b> V8, auto, PS, PB, factory air, AM/FM tape, radial tires. <b>\$3698</b></p>	<p><b>'70 FORD GAL</b> XL coupe, 429 V8, auto, PS, PB, factory air <b>\$1498</b></p>	<p><b>'72 FORD F-100</b> 302, V8, auto, 2-tone green <b>\$3098</b></p>
<p><b>'74 PINTO WGN.</b> 2300 c.c. engine with auto trans. <b>\$2298</b></p>	<p><b>'73 TORINO</b> Gran Sport, V8, auto, PS, PB, mag wheels, dk. ivy green <b>\$2698</b></p>	<p><b>'75 CHEV. 3/4 TON 4X4</b> Features a V8 with 4 spd., PB, PS. <b>\$4898</b></p>

We are open till 9 p.m. weekdays; 6 p.m. on Saturdays

# McROBERT

243rd. & S.E. POWELL

SINCE 1930



# FORD

GRESHAM 665-0101