

# The Bill Snyder

CO. REALTORS

666-5531



### SUNSET VIEW

PLUS DOWNTOWN Portland and all East County, may be seen from this 3 bedroom daylight basement home, complete with formal dining, eating space in kitchen, 2 fireplaces, all wall-to-wall carpeting split cedar roof and many other features. Located in prestigious Gresham area. Asking only \$65,500.



### CLOSE TO MT. H C C

NEWER DUPLEX, great rental area, 1-3 bedrooms 1 1/2 baths, 1-2 bedroom 1 bath, both have fireplaces, washer and dryer hookups appliances and patios, priced to sell fast, \$48,500.

Tri-State-Donald P. Nelson Realty Co.  
16742 SE Division  
761-3200



### PARKROSE AREA

WANT TO MOVE closer in? Then see this 3 B-R, 2 1/2 bath home in the desirable Parkrose area. Full finished basement, fenced yard, only \$52,500. 666-5531.



### DAMASCUS FOUR LEVEL

4 B-R, 2 baths, large L-R, formal D-R, family room, even swimming pool on Jr. acrea and only \$54,950. 666-5531.



### ENCHANTED FOREST

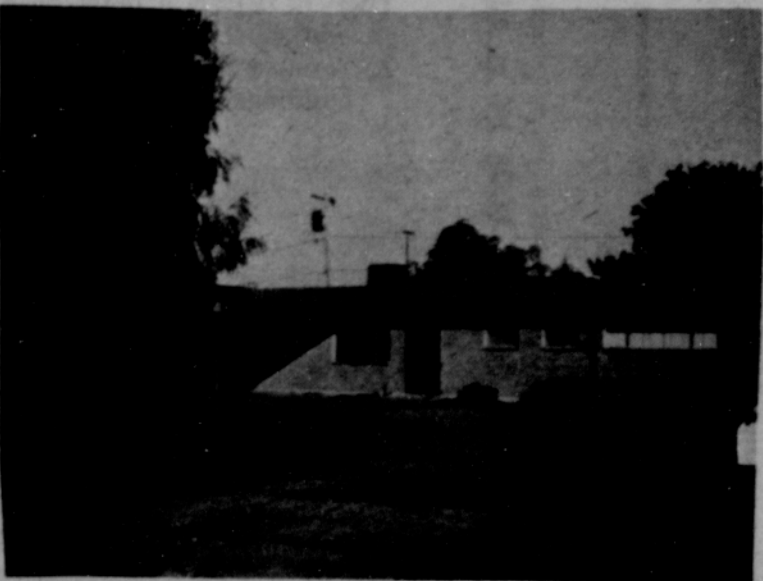
THIS IS A THREE BEDROOM ranch set under 8 tall fir trees. This home boasts all cedar siding, shingle roof, and insulated throughout. Built in range, dishwasher, and self cleaning oven in country kitchen. Family room has w-w fireplace with beam ceiling and sliding glass doors onto the covered 12 x 22 patio. \$48,500. 666-3819. Evenings, 252-1501.



### LOVELY LARGE HOME

THIS HOME features five bedrooms, two baths, large living room with fireplace. Storm windows all around. On cul-de-sac in excellent Gresham area. A great family home that is priced right at \$41,000.

666-3819 eves 666-4463



### CLIFFGATE \$42,500

ALL BRICK contemporary, 3 B-R, 1 1/2 baths, see-thru fireplace, built-in appliances, this is our nicest. Call 666-5531.



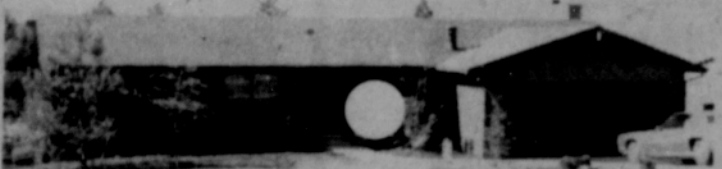
### 23250 SE BLUE RIDGE

4000 SQ. FT. of living area, 4 bedrooms, 3 baths, formal dining, 2 family rooms, full daylight basement, large deck on nearly 1 acre, \$59,500, 666-5531.

*The Gallery OF HOMES* **Bucher Realty, Inc.**



For More Information  
Call 256-1112 Today  
**Georgetown Realty, Inc.**



### VIEW-VIEW-VIEW

SPECTACULAR VIEWING of the countryside and City from this 2 year old DAYLIGHT BASEMENT RANCH. Over 2700 feet of finished area featuring 3 BEDROOMS 3 BATHS, formal dining room, kitchen eating space. FAMILY ROOM with fireplace, 24 x 27 PARTY ROOM complete with WET BAR, 10 x 45 PATIO and 2 decks. The home you've been waiting for !! \$65,950. Call today for your private showing.



### CLIFFGATE GEM

IN ONE OF PARKROSE'S finest areas, mother will love this large country kitchen, with three bedrms, 1 1/2 baths, fireplace, and a fourth bedrm., (or family rm) it has something for every member of the family. Priced to sell at \$40,950.



### GRESHAM HIGH \$43,900

VERY LARGE ranch home, 3 large bedrooms, 2 full baths, cozy family room w-fireplace, large fenced backyard on quiet dead-end street. 666-5531.



### MINI FARM - \$68,500

BEAUTIFUL 4 level home on 1 1/2 acres or up to 14 acres available. Buy what you need 3600 sq. ft. of formal or informal living space, 2 F-P and large family room. Call John Dixon, 666-5531 or 256-0604.



### 2113 SE SALMON

MOVE RIGHT IN this spotless 3 B-R home. New carpet and drapes, air conditioned, electric door openers, fenced yard and pool, 666-5531.



THIS HOME PROVES that we will get right on top of any real estate problem you have. We need homes to sell in all price ranges. Call 666-5531.