



3 BR, FAM. RM. \$31,950

RANCH STYLE HOME in convenient Gresham area. Features w-w carpets, drapes, built-ins, bar in family rm, inside utility rm, storm windows, dbl. gar, fenced & terraced rear yard w-room for family enjoyment & ready for you. Call Jim Nickila, 256-3050.



NEW & LANDSCAPED

HUGE DALITE BSMT RANCH on priv. lot, thermo windows, heatolator frpl, 3 bdrm (poss 4), 2 baths (poss 3), formal din. rm, beautiful cabinets, 3000 sq. ft. of luxury, finished party rm, \$52,950. Call Russ George, 256-3050.

Four seasons REALTY

PRESTIGE AREA

OF GRESHAM - First time on the market and quality and top construction is evident everywhere - 2 story, 4 bdrm, 3 bath home on large, beautifully landscaped secluded lot - Beamed ceiling family room with corner fireplace. Huge utility, separate bachelor apartment. A lovely home in a fantastic setting. \$75,000 - 256-0542.

EXCEPTIONAL HOME

ABSOLUTELY IMMACULATE split entry home in Sun Park Terrace. Beautifully decorated and maintained. Deluxe features throughout with patio and decks, full sprinkling system. This 3 bdrm, 3 bath, familyroom home is priced at only \$61,500 - Call us at 256-0542 for details.

NEW CONTEMPORARY

UNIQUE 4 LEVEL plan just being completed. Quality construction and situated in beautiful Darling Park. \$72,900. 256-0542.

2 STORY COLONIAL

ON 4 LEVEL acres with fenced pasture and 4 stall barn - The home has spacious 4 bedrooms, 3 baths. Central entry with open staircase, large familyroom with fireplace, formal dining and much, much more - \$84,000 - 256-0542.

DON BOGH, INC.

256-0542

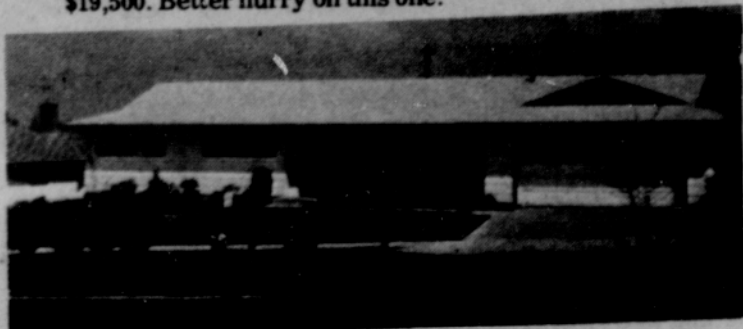
1027 NE 122nd

In The Log Cabin



CUTE COTTAGE

THIS NICE older 3 BR home features w-w carpets, new bath, large lot and a parklike setting. Priced at only \$19,500. Better hurry on this one.



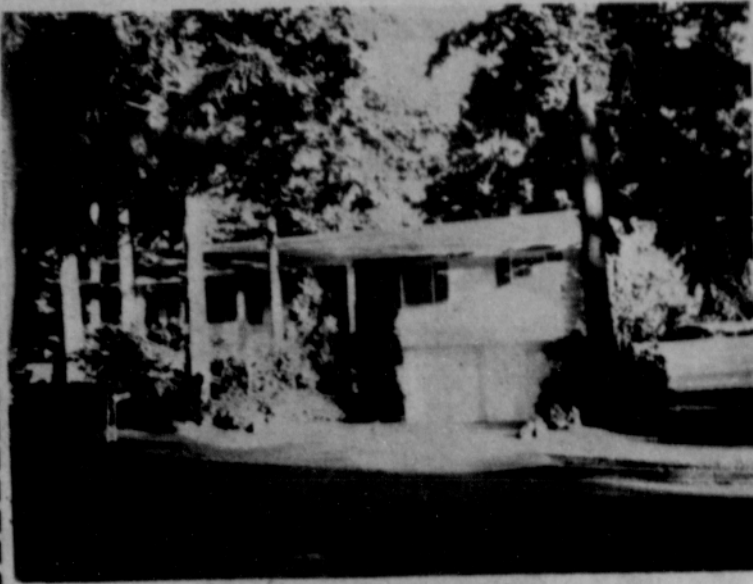
NEIGHBORS THAT CARE

IF NEIGHBORHOOD pride is important to you, this beautifully decorated immaculately cared for ranch may be your next home. 3 bedrooms, 2 baths, family room and rock fireplace. \$43,500.



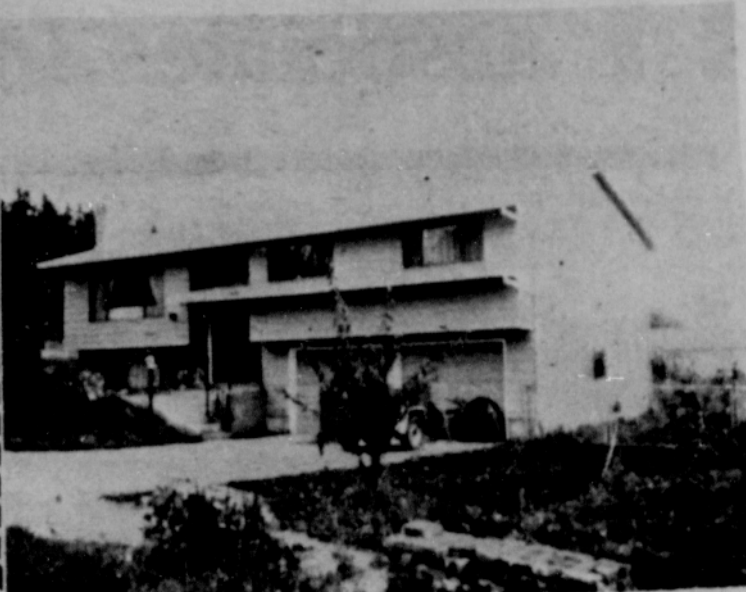
McGILL & WALKER, inc.

666-1533 OPEN 9-9 760-5800



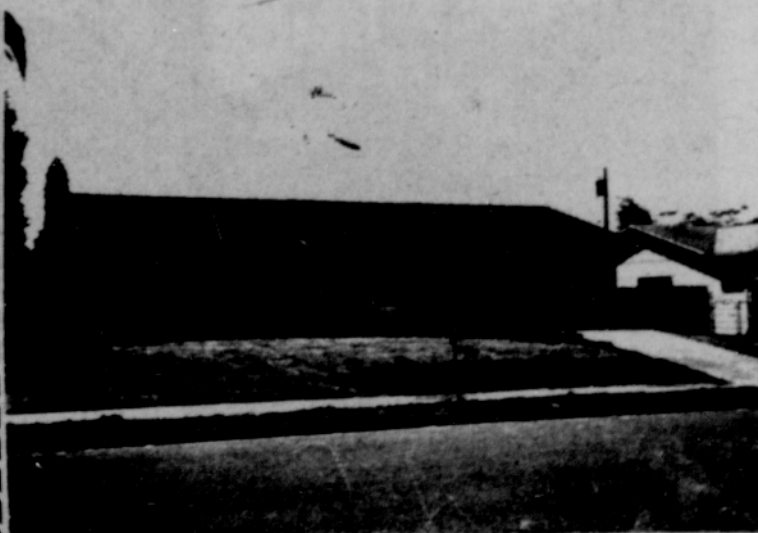
CYPRESS REALTY

BEAUTIFUL SPLIT ENTRY nestled among towering firs. Just listed too! 3 bdrms, 2 2-3 baths. Large family room, 2 fireplaces, Finished 2 car garage. Top family area! Only \$49,500.



REYNOLDS HI

VERY NICE QUALITY split entry on cul-de-sac. 3 bedroom, 2 bath, family room. Formal dining. In area of comparable homes. \$48,500.



FHA-VA \$33,500

WELL BUILT 3 bedroom, 1 2-3 bath ranch in nice neighborhood with 1175 sq. ft. Storm windows, air conditioner, hardwood floors, fenced back yard, patio, range, dishwasher, close to schools.

COLUMBIA RIVER VIEW

IN TROUTDALE, with easy access to freeway, super custom split entry on oversized lot with sweeping view. 3 bedroom, 2 bath up, additional roughed-in bath in basement. A total of 2,588 sq. ft. plus double garage. Dbl pane windows. On nearly private cul-de-sac. Don't wait. \$55,950.

DEVELOPERS

BUILDERS. 8.49 acres in troutdale. Zoned A-2 and R-7. Sewer and water. Street frontage. Terms.



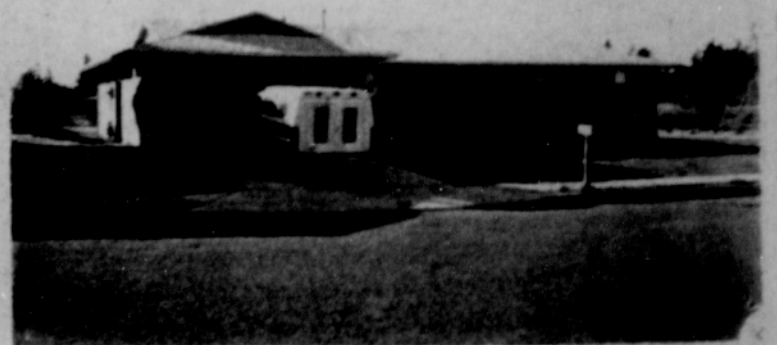
CUSTOM DELUXE RANCH

ALL CEDAR ROOF AND SIDING for low care, 3 bedroom, 2 bath, family room, 2 fireplaces, Jenn-air kitchen. Next to large open greenway in exclusive Mossytreet Park. \$47,500.



NEXT GRESHAM GOLF COURSE

4 LARGE BEDROOMS. Wood earth stove enhances the gleaming living and dining rooms. Double garage, fenced, neatly landscaped. \$38,500.



EXTRA CAMPER PARKING

NICELY LOCATED 3 bedroom, 2 bath ranch with family rm. Wall-wall carpet, built-ins, separate utility room, lots of storage space. \$37,950. Possible terms.

TREES AND VIEW

CUSTOM SPLIT ENTRY on large wooded lot with view of Columbia River. 3 bedroom, 2 bath, family room, 2 fireplaces, roughed-in bsmt, add'l bath down roughed in. Don't hesitate, won't last. Pick your colors. \$51,500.

CHALET ON ACREAGE

NEW 2 1/2 story contemporary, large deck with panoramic view, cedar interior, open beam ceiling, frontier fireplace, 24 x 16 bedroom, and much more. Quiet setting with pasture and trees. \$52,500.



CYPRESS REALTY

Service Is Our Pledge

MAIN OFFICE 255-8582

GRESHAM OFFICE 667-2828