

Tips for tax reserve payments

Are you paying for your home with borrowed money?

Marilyn Lunner, OSU Extension home economist for Clackamas County, calls attention to the new law that goes into effect Sept. 1. It provides that a borrower may pay his own taxes if he so chooses, rather than establishing a tax reserve with the lender.

If you have a conventional loan and the amount you owe is less than 85 per cent of the purchase price, you can decide to pay your own taxes—unless it is required by law that you have a special reserve account to pay insurance and taxes.

Federal Housing Administration loans both require reserve accounts.

Of course, you must keep taxes and insurance payments current or the lender can require you to set up a reserve or Lender's Security Protection fund.

If you decide or are required to have a reserve account for taxes and insurance, you can agree with the lender on one of the three ways the fund can operate:

The lender can pay interest to the borrower on funds deposited in the account at a rate of not less than the highest

Or, you can deposit the full amount of the taxes and insurance into a pledged savings account. You would not be able to withdraw the account except for taxes and insurance, but the account will earn interest for you.

The new law gives you the right to make the decision about how you wish to pay your taxes and insurance. Discuss this with your lender, advises the home economist.

rate currently authorized to be paid on open passbook accounts minus 1/4 of one per cent. If the rate is less than 4 per cent, the rate paid shall be 4 per cent.

Or, the lender can capitalize the account, that is, apply all of the monthly payments, including amount for taxes and insurance, to the principal and interest. When taxes and insurance are due, charge the amount back to the loan as an addition.

Trailer park requests permit

Eagle Creek Mobile Home Park, Inc., which has begun construction of an 81-unit mobile home park on SE Eagle Creek Road north of Folsom Road has requested an unzoned area development permit from the county.

The Clackamas County Planning Commission will discuss the request at its 7 p.m. Monday meeting in the county courthouse in Oregon City.

The mobile home park company estimates it could complete construction in about 90 days if the permit is granted.

A recent ordinance requires county approval for all developments in unzoned areas.

ooo
The finest procelain and ordinary earthenware differ in the purity of the same raw material.

Buxton's Lee Meat Co.
Sandy 668-4838
Grain fed locker beef.
Custom slaughtering, cut and wrap, quick freeze.
25 lb. locker pack.
Tuesday Hauling

Training:
Hunters
Jumpers
Western

Bridlewood Horseman's Center

Learn Equitation:
Stock Seat
Hunt Seat
Saddle

663-5440

Limited School.
Horses Available

Stabling
includes lessons



Contact
Gregg Shrake
or
Connie Burns

Route 1, Box 420
(Lusted Road)
Boring, Ore. 97009

Woman gets masters



SHIRLEY E. THOMPSON of Sandy received her masters of education degree from the University of Portland during summer commencement ceremonies Aug. 8. She resides at 44756 SE Marmot with her husband, Joseph. The Rev. Paul E. Waldschmidt, C.S.C., president of the university, conferred 30 bachelor degrees and 59 masters at the outdoors ceremonies.

Elementary School

SANDY ELEMENTARY DISTRICT NO. 46

OPENING OF SCHOOL INFORMATION

All students new to Sandy Elementary Schools, including first graders not previously registered for school on Monday, Aug. 25, in the respective school offices: Firewood School, grades 1, 2, 3; Intermediate School, grades 4, 5, 6 and Upper School, grades 7, 8.

The school offices will be open for registration from 8:30 a.m. to 4 p.m.

Classes for students will begin on Tuesday, Sept. 2. School lunches will be served beginning the first day of school. Meal prices remain the same as the 1974-75 school year. The prices for hot lunches are as follows: Grades 7-8, 50 cents per meal, Grades 1-6, 40 cents per meal.

Reduced priced lunches at 20 cents per meal and free lunches will be available for students whose families qualify based on family income standards. Information will be made available to parent on the first day of school or earlier upon inquiry at the school offices.

Students supply lists for school supplies have been distributed to the various stores in Sandy that carry school supplies. Students may inquire at the stores for supplies' information.

Immunization Requirements:

State law requires that children enrolling in Oregon schools for the first time meet immunization requirements. This law does not apply to children transferring from one school to another within Oregon.

Upon enrolling a child in school for the first time the parent or guardian must present to the principal one of more of the following statements:

1. A statement signed by the physician or local health department official that the child has received immunizations as prescribed by the State Health Division, or,

2. A statement by a physician that the physical condition of the child is such that immunization would endanger his health, or,

3. A statement that the child is being reared as an adherent to a religion, the teachings of which are opposed to such immunization, or

4. A statement that arrangements will be made to have required immunizations initiated within 30 days for Oregon entries, or 60 days for out-of-state students having difficulty in procuring records.

Please check with your family physician or local county health department for immunization requirements and statement forms.

Bus route information including time schedules will appear here next week. Bus routing is being studied at the present time. This information is unavailable at the present time.

School time accident insurance will be available for those families desiring to insure their children. This insurance is offered through the Oregon School Activities Association for \$3 per year. This insurance program is optional, not required.

If you have questions regarding your schools, please feel free to telephone 668-5541 or stop in the school offices.

Freeway election favored

The Portland Chamber of Commerce board continues to favor a vote on the Mt. Hood Freeway, according to a statement issued Friday.

"It is unnecessary to say that we were extremely disappointed by the recent move at the state level to set the wheels in motion for a transfer to other uses of the federal funds which

had been available for the major part of the Mt. Hood Freeway-Transitway cost."

"The voice of our citizens to be expressed through their vote on the initiative measure" is far more effective than inflammatory rhetoric or heated accusations, the statement said.

Gov. Bob Straub and a contingent of other state and Portland officials traveled to Washington, D.C., recently to speed up the transfer of freeway funds to transit and other highway projects.

LETTERS TO THE EDITOR

from page 2

State of Oregon Employment Division.

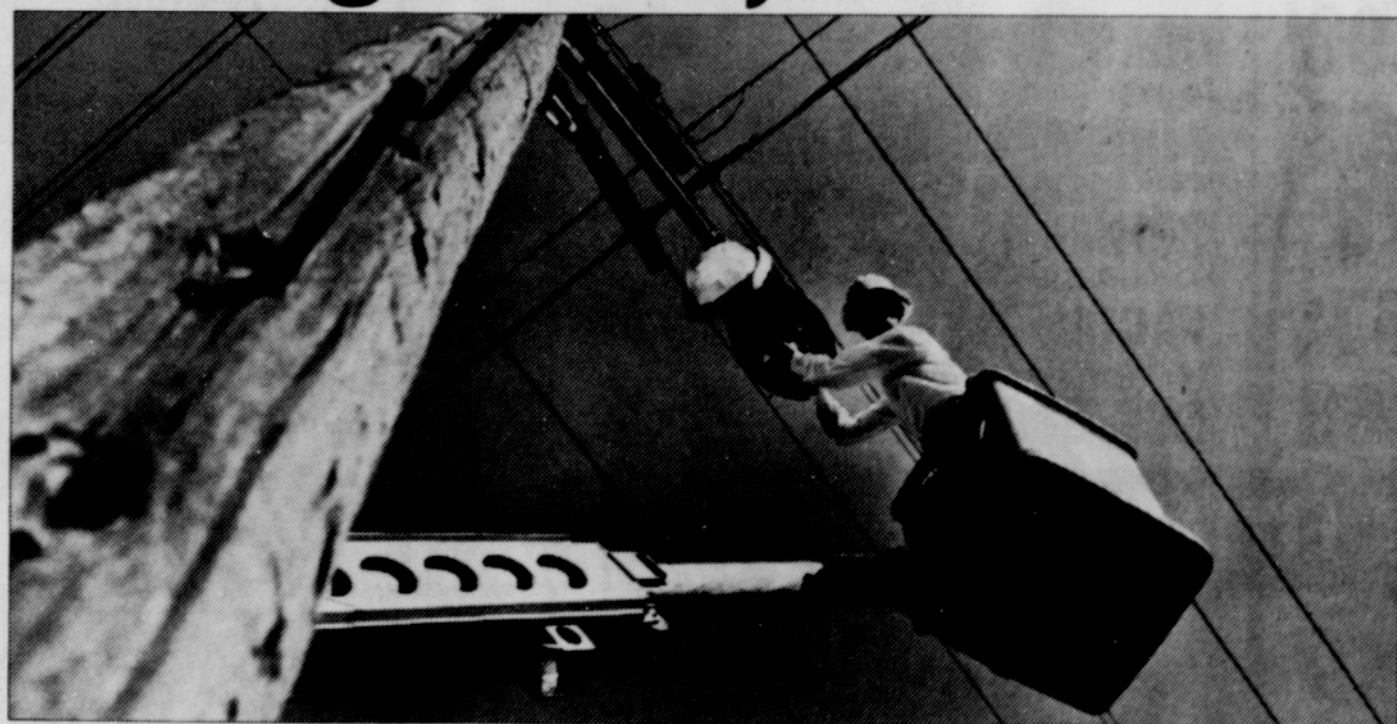
Officers were elected for the coming 12 months as follows: W. Pete Sulzbach, president; Dick Harrison, vice-president; Edna Haneberg, treasurer; and Shirley Flath, secretary. Astri Torbergson will continue as chairman of HELP Volunteers and Helen Sulzbach as chairman of the Baby Clinic sponsored by the center.

Wilbur 'Pete' Sulzbach
38630 SE Hudson Road
Sandy



KURT BREWSTER with his winning Submarine Sandwich. Having received the Cowbelle's award, he will demonstrate his culinary skills at the State Fair next week.

While you're watching watts,



PGE's Bob Malmgren is watching street lighting costs.

PGE people saved customers more than \$100,000 last year through a computer-planned street lamp replacement program

It costs \$6.64 to replace one typical street lamp when done on the routine five-year or 20,000 burning-hours basis of PGE's relamping program. If PGE had no group relamping program, and simply let each street lamp burn until it failed, it would cost an average of \$27.78 to replace each lamp on an emergency basis, with a repair crew which involves a repair truck and two men.

Routine, one-man, one-rig (shown in photo) lamp replacement done on regular time can save up to \$21.14 per lamp. As many as 5,000 lamps of the 100,000 on PGE's system can be expected to fail each year and would require emergency replacement. With a program of routine group

replacement, maintenance costs of approximately \$105,000 annually are avoided.

Bob Malmgren, Line Department Relamper, and the men working with Bob in PGE's group relamping program, do some bonus things on the job, too, which save additional costs in the long run. For example, when Bob is driving his route, he carries all the gear needed for other routine minor repairs. When he's at a location, he checks everything, including wiring, bird guards, reflectors, glass lenses and the photoelectric cells on the fixture. When he leaves the location, the entire street lamp assembly is in the best condition to last another five years of unflinching operation.

How do Bob and his co-workers know where to go? Well, PGE has the entire street lighting system set up on computers. The computers let everyone know exactly which lamps are due for replace-

ment at a specific time. Bob simply follows the route shown on the computer cards. In spite of savings like \$100,000-plus made in PGE's relamping program, inflation and growth are causing the cost of electricity to go up. But it's nice to know that PGE people like Bob Malmgren are saving for you wherever they can. Conservation is important everywhere.

PGE still needs your help in keeping streets and property safe at night. When you see a street light not burning at night, please call your nearest PGE office.



Depend on us to keep electricity one of the best buys in your budget.

BILLY THE KID TODDLERS

the boyswear specialist!

Washed Denim Jeans

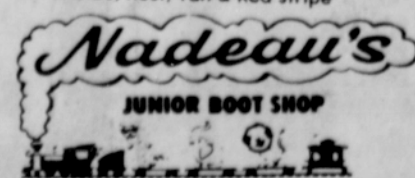
with Matching Jacket.
Washed denim is in, and these jeans should be included in your Toddler's wardrobe. They are contrast stitched, with front curved pockets and 1/2 elastic waist band. Completely washable and 100% cotton.
Team them up with matching washed denim jacket and coordinating shirts for a practical outfit that's top in looks and comfort!

Pants \$7²⁵

Jackets \$8²⁵

Colors: Blue, Rust, Tan & Red stripe

Sizes
Toddlers
2-4



ROCKWOOD PLAZA
665-6805

the brand with loyalty to quality