

930— AUTOMOBILES

FOR SALE: 1961 Chev. school bus, 70 series, 3 ton chassis, Bluebird body, 409 engine, 5 speed, front end good, price \$1,000.

1959 GMC school bus, Superior body, 308 engine, 5 speed, good interior, price \$500. Boring Grade School, David E. Gillespie, Supt., phone 663-5909. B-34mt

TACO SHAK serving authentic Mexican food, 17466 SE Division, 761-4234. T-34t

1966 FORD MUSTANG, 6 cylinder, 3 speed standard, High mileage, excellent condition, extras. \$800. 666-2262. L-34mt

930— AUTOMOBILES

'63 BUICK Skylark, good for parts, \$25. 622-4431. W-34tpd

1967 FORD ranch wagon, AT, PB, PS, very clean. \$495.00, 668-6817. V-34t

'67 FORD station wagon - good condition, \$500. 665-6381. T-34mtpd 34m pd

CLASSIC CONVERTIBLE, 1972 Pontiac Gran Ville, executive car. Power steering, power brakes, stereo tape, beautiful. 36,500 miles. \$2,500.00, 665-2466. W-34t

930— AUTOMOBILES

1971 FURY III sedan, fully automatic, factory air, green with green interior, top shape, must sell, \$1,495 or best offer, 665-9219 after 6:00. A-34t

'67 FORD, auto, PB, PS, \$150.00, 666-2992. C-34t

'69 DODGE Cornet, 318 auto, PS, PB, headers, \$700.00, 666-2992. C-34t

1968 RIVIERA. Must sell, \$1,195? P.S., P.B., Tilt wheel. Best in and out. 667-2650. P-34mt

'71 VW 411 - auto, air, ratio, good mechanical condition. Poor factory paint, \$1150.00, 666-1250. G-36m

930— AUTOMOBILES

FOR SALE one yellow Toyota Corolla, 5 speed, hard top, GT wheels, brand new. 666-4677. M-36m

'67 FORD 4 speed, 2 door HT., one owner, 665-8564, \$750.00. 665-8564. C-35m

'68 IMPALA, 4 door, 307, slight ding in door, 75,000 miles, rebuilt transmission, complete tuneup, 760-5842. K-35m

1967 PLYMOUTH Fury station wagon, clean and in excellent condition, 668-6552. C-34tpd

1966 DODGE, 6 cyl., \$600. or best offer, 665-8794. C-34tpd

930— AUTOMOBILES

'69 OPEL wagon, auto trans., 26 mpg, very nice, \$950., 666-6850. S-34t

TOYOTA COROLLA 1600, 2 d-w, four speed, very good, \$1855., worth much more. 761-9140. S-36m

'70 NOVA 4 door 307, PS, auto., new transmission, \$1695., 253-1648, Paige. L-34t

1957 CHEVROLET BelAire, two door, \$650, 666-6887. B-34t

'67 CHEV Impala, 2 door automatic, power steering, power brakes, power windows, radio, heater, rear window defogger, excellent condition, \$595.00, 665-5965. H-34t

930— AUTOMOBILES

'68 CHEV MALIBU, rebuilt 283, automatic, vinyl top. \$850.00, 663-4754. O-34t

'71 PINTO Runabout, fully equipped, with set of snow tires, \$1,500., 622-4576. B-34t

'67 PLYMOUTH air conditioned, bucket seats, \$600.00 or trade for old pick-up. 665-7609. T-34tpd

'68 PONTIAC Firebird, excellent condition, reasonable, 666-1832 or 665-3715. E-38m

1960 CHEV 4 speed, 348. Body and interior in good condition. Chrome wheels, needs battery and muffler. \$295., Call 665-8303. E-36m x

Toyota Celica
challenges the Europeans



The Toyota Celica GT's tough 2.2 liter hemi-head engine delivers more horse-power than the engine in Scirocco, Opel Manta or Capri II. And the Celica GT's low prices includes a long list of standard features—even an AM/FM stereo radio, electric rear window defogger and a 5—speed overdrive transmission at no extra cost.

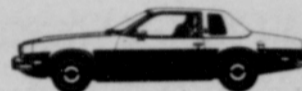
See how much car your money can buy.

T-34t

MURRAY Chevrolet

Absolutely the best time of the year to buy a new Chevrolet car or truck

Big Monza Sale
10 to Choose From



60,000 mile guarantee on 4 cyl. engine available with 4 spd. automatic or the 5 speed with EPA test of 34 MPG
Example. New 75 Monza town coupe

equipped with custom belts - tinted glass side moldings
4 speed WSW tires - AM radio - Vinyl top
Bronze with buckskin trim **\$3788**

Every Car & Truck At SPECIAL DISCOUNT PRICES

'75 Vega Coupe Auto trans, radial WSW, custom interior, radio, 60,000 eng. guarantee. No. 50060 ONLY \$3388	'75 Monte Carlo Landau Air Cond., cust split seats, 5 spd. and cruise-tilt wheel, radial WSW. No. 50389. ONLY \$5488	'75 Impala Spt. Coupe Auto. trans., PS, radial WSW, tint glass, AM radio. No. 50035. ONLY \$4288
'75 Nova Sedan 6 cyl. auto trans, PS, radial WSW, radio. No. 50464 ONLY \$3888	'75 Malibu Classic 4 drs. for the family, air cond., auto trans., radio, radial WSW. No. 50391. ONLY \$4588	'75 Classic El Camino V8, auto trans., PS, tilt wheel, radial WSW, AM radio, two tone. No. 50429 ONLY \$4388
'75 LUV PU 4 cyl. 4 spd, WSW, radio, bumper, decor package No. 15413 ONLY \$3388	'75 ¾ Ton Fleetside 4 spd. trans., PS, AM radio, spec. 2 tone paint, spare tire and wheel. No. 50453. ONLY \$4388	'75 ¾ Ton 4x4 V8, auto. trans, PS, radio, 10 ply on-off tires. No. 15431 ONLY \$5488

Prices do not include license fee. 100% Financing available. Up to 48 months on Approved Credit.



USED



CARS AND TRUCKS



'74 Camaro Stickshift, blue, big tires Only 3498⁰⁰	'74 Malibu Coupe Turbohydramatic, PS, PB, white striped tires, AM radio, full wheel covers, dark blue met with matching trim & white landau roof, only 7800 miles Only \$3398⁰⁰
'73 Impala Sedan Light blue, only 20,975 miles Only 2998⁰⁰	'73 AMC Javelin 4 spd transmission, power steering, radio, dark brown with saddle trim.
'73 Pinto Squire Station wagon, nice! Only 2695⁰⁰	'71 Chevelle Sedan 307 V8, stick, light blue Only 1795⁰⁰

BIG SAVINGS
On Driver Edu. Nova's

Example

'75 NOVA CUSTOM COUPE turbohydramatic trans., power steering, power brakes, soft ray glass, radial tires, body side moldings, AM radio, remote control rear view mirror, silver with black vinyl trim and white vinyl roof. Sticker Price 4464.05

Stock No. 85030 Our Sale Price **Only \$3698⁰⁰**

'71 Fiat 124 Coupe 5 spd transmission, white with black trim, super nice car. Only 2598⁰⁰	'69 Plym Fury Sedan Automatic, PS, green Only 1095⁰⁰
'69 Malibu Sedan New tires, light green, super clean! Only 1698⁰⁰	'69 Pontiac Grand Prix Sport coupe, yellow & black Only 1398⁰⁰

WE PRIDE OURSELVES ON OUR LOW PRICES. THE REASON IS SIMPLE. WE'D RATHER SELL A LOT OF VEHICLES AT A SMALL PROFIT THAN FEWER VEHICLES AT BIG PROFITS.

'69 VOLKSWAGON Sun roof, auto stick, beige. Clean! Only \$1398
'72 Ford ¾ Pickup Sport custom w/automatic trans., dark red & white roof, burgandy trim, OK warranty Only \$2998⁰⁰
'73 Blazer 307 V8 Turbohydramatic trans, PS, PB, both tops. Only 13,000 miles OK warranty Only 3498
'73 GMC ¾ Pick 350 V8, turbo trans., PS, PB, new tires, silver, OK warranty Only 3698
'72 Impala Cust. Coupe Dark brown, metallic, sharp! Only 2398⁰⁰
'72 Ford ½ Ton Pickup V8, PS, includes canopy, excellent condition Only \$2798⁰⁰
'72 Chevy Van ¾ ton with 350 V8, turbo trans., PS, PB, gauges, aux tank, front stabilizer, HD springs, radial tires, OK warranty Only 3298

ECONOMY SPECIALS

'74 Vega Hatchback, 4 speed, R&H, red finish, sharp \$2595	'72 Impala Chevrolet, custom HT, R&H, AT., PS., PB., Air cond., very clean, also vinyl top \$2195
'74 VW Beetle 4 speed, 1 owner, 8,300 miles \$2695	'71 Datsun 1200 Cpe, 4 speed. Runs out good. Only \$1295
'74 VW Tudor, white with black C stripes, clean \$2695	'71 MK II 4 door, 4 speed, sedan, R&H, A sharp one \$1995
'73 Vega Chev Hatchback, red, automatic, R&H, clean and ready \$1995	'70 Chrysler Sedan, gold with vinyl top, good family car \$995
'73 Celica AT, R&H, mag wheels, one owner. Sold new here, low miles. Only \$3195	'68 Chev. Bel Aire, 4 door family car-look, 6 cyl., AT, R&H \$995
'73 Cpe DeVille Look at this, every thing on this, and only 29,000 miles. Beautiful bronze finish with vinyl top. Asking \$5795	'68 VW Beetle 4 speed, white, R&H, nice economy car \$1295
'72 Gremlin 6 cyl., 3 speed transmission. Very nice \$1995	'68 Cougar HT, V8, AT., PS. \$1495
'72 Pinto Wag 4 speed, pretty metallic brown, nice unit \$1795	'67 Plymouth Red tudor, hardtop, one owner, V-8, AT, PS, look at this, only \$695
COMMERCIAL	
'74 Luv Pickup 4 speed, "Mikado" trim, little green grocery getter \$2895	'71 L-C Wagon Sold new here, some miles on this, but well taken care of in our own shop. Only \$2995
'74 Toyota Pickup Automatic, red, short wheelbase, sold new here, HD bumper, R&H \$3095	'71 L-C Wagon 4 x 4, beige and white, 3 speed, R&H, electric rear window. Sold new here. Some miles but a good one. Only \$2995
'74 L-C Beige HT, hubs, R&H, extra gas tank, only about 4500 miles on this. \$4795	'67 Int. Travelair V8, 3 speed, R&H, A good one, Only \$895
'72 GMC ¾ Ton Pickup, 4 speed, V-8, R&H, new water pump, super nice unit \$2595	Small Truck Campers
'71 L-C HT, 4 wheel drive, rar in' to go \$3295	3 to choose from. Just in time for summer \$595 to \$1395

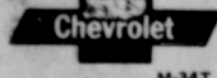
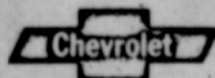
GRESHAM TOYOTA

242nd & Division 665-1135



MURRAY CHEVROLET CO.

243rd & E. Powell Blvd.
Gresham, Oregon 97030
665-0141



M-34T