

GOOD TRAFFIC PATTERN
COME LIVE IN Gresham in this 3 bedroom, 1 1/2 bath, fplc., double garage. Good area. Built in 1971. \$32,950. No. 054. Call 666-9566 or 653-9844 eves., 761-5068.

COMPLETELY REMODELED
AND JUST right for the smaller family. 2 bdms., (or 1 bdrm + family room) with finished upstairs area. New deluxe w/w carpets, big lot, utility shed. Only \$19,500. No. 346. Call 666-9566 or 653-9844 eves., 630-3210.

ATTENTION INVESTORS
POTENTIAL in the location. Owner is flexible on terms. \$27,300. No. 920. Call now 666-9566 or 653-9844 eves., 665-5207.

OVERSIZED GARAGE
HEATED AND WIRED 220. Detached 2 bedroom, possible 3rd. Fireplace. W/w carpet, air conditioned. Extra long 1st. \$28,500. No. 325. Call 666-9566 or 653-9844 eves., 663-3998.

3 ACRES OF VIEW
JUST MADE for family living, this home has approx. 3,000 sq. ft., 4 oversized bdms., fam. rm., 2 baths, 2 fireplaces, dbl garage, and expansive LR & DR surrounded by windows & deck to take full advantage of the Mt. Hood View. Barn, dog kennel and fully fenced. \$64,950. No. 53. Call 666-9566 or 653-9844 eves., 630-3210.

YOU'LL BE HAPPY
IN THIS completely remodeled home with 3 bdms., kitchen with eating space and built-in range. New w/w carpets, garage and excellent location close to shopping in Estacada. \$21,950. No. 384. Call 666-9566 or 653-9844 eves., 630-3210.

COUNTRY LIVING
WITH CITY convenience. Charming 3 bdrm with family rm. and large covered patio. Completely redwood fenced yard with garden space. Double garage. Owner leaving state. Some appliances negotiable with house \$28,500. No. 404. Call today. 666-9566 or 653-9844 eves., 666-8229.

stagens REALTORS
 1025 EAST POWELL 653-9844 666-9566



A VERY LOVELY TROUTDALE HOME
MANY, MANY extras. Built-in intercom, indirect lighting in kitchen, wired for T.V., walk-in closet, ceramic tile entry and bath, brick veneer, raised panel front door, 3 bedrooms 2 baths, family room, located on a cul-de-sac with an adjoining common area. Walking distance to a grade school. Reynolds High dist. \$33,500.

CENTENNIAL DISTRICT RANCH STYLE HOME
3 BEDROOMS, 2 baths, Air Conditioned, large double garage, metal storage shed, large covered patio, family room, fireplace, well landscaped, large lot, brocade ceilings. Very attractive and well cared for. \$32,950.

ANOTHER EXCELLENT CENTENNIAL AREA HOME
VERY NICE oversized lot with mature landscaping and fruit trees. Home features a floor-to-ceiling Arizona Stone Fireplace with glass front. Patio, metal foil shed, folding clothes line. One bath has been completely redone with new carpeting. \$30,500.

FINISH THIS ONE AND SAVE
1.27 ACRES, IN Orient. This home needs lots of finish work but it has over 3000 sq. ft. of living space, 6 bedrooms 3 baths, party room ROOM TO ROAM. \$39,950.

OREGON M.L.S. **United Shelters.** REALTORS **MLS** MULTIPLE LISTING SERVICE
HORSFELDT CORP.
 720 E. Burnside 667-0530 Gresham

REYNOLDS HIGH
SPACIOUS SPLIT entry on wooded lot. 4 bedrooms, 2 baths, family room, appliances, quality construction for only \$46,950.

2 1/2 ACRES
BUILDING SITE IN Happy Valley for only \$13,500, possible contract.

LARGE LOT WITH VIEW
3 OVERSIZED bedrooms, 2 baths, (1 off master bedroom), Large kitchen, formal dining room, family room with heatolater fireplace, \$37,950. Gerns.

2 ACRES
LARGE 1600 sq. foot home, 3 bedrooms, 2 baths. Family room, a quality custom built home, 24 x 40 garage, with shop. Beautiful landscaping, east of Gresham. Asking \$53,950.

MAYFAIR REALTY
ROCKWOOD BRANCH
 18601 E. Burnside 665-0111



THE SPOILER
SPOIL YOURSELF AND FAMILY with this split entry beauty, 3 bdrm, 3 bath almost 2600 square ft. of gracious living. Features stone fireplace which accents the entry with its massive stone back. Wall to wall carpets, custom drapes, country kitchen with all built-ins including dishwasher and BBQ grill, breakfast bar and dining area, other features include family room, rec. room partially finished with 2nd fireplace situated on almost 2 acres just south of Gresham on beautiful Tower Hill. Only \$55,000. L624.

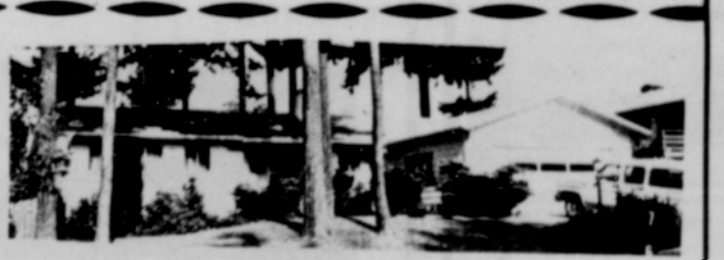
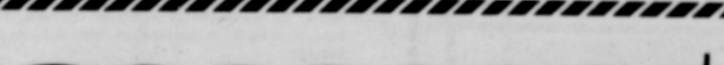
42 1/4 ACRES OF PASTURE LAND, fenced and cross fenced with spring fed pond, barn and loafing shed. Features large remodeled home 3 bdms, 1 1/2 baths, and fireplace, 1 bdrm rental cottage, a building or mobile home site with well and septic tank already in, a productive farm with view. L608.



SUMMER HOME \$17,900
BASK IN THE SUN on the banks of the river from your own back yard in beautiful Paradise Park. Featuring 1 bedroom cedar bungalow, living room with fireplace, kitchen with eating space. Furnished. Call now. L642.

HOME AND INCOME POTENTIAL EAGLE CREEK AREA
VERY SPACIOUS family home, featuring 3 extra large bedrooms, 2 baths, huge living room with fireplace, recreation room - family room combo in lower level situated on 4.79 acres of potential commercial zoned property. Frontage on Highway 224. Asking \$70,000.

SANDY 668-5525 **WESTLAND REALTY 630-3411**



! TREES PLUS A PARK!
BONUS SPACE in this BASEMENT STYLE home makes it a great family home. Features a large covered patio, 3 bedrooms plus room for more downstairs, 2 fireplaces, and a large family recreation room. LOCATED NEAR SCHOOLS and across from a delightful park. Surprisingly priced at \$41,950. Call for a showing today. 666-5521.



! DELUXE DUPLEX!
QUALITY THROUGHOUT in this 3 bedroom — 2 bedroom combination, includes fireplaces, garages, patios, plus appliances. Owners side is very plush — nice carpets, woodwork, and wallpaper. A good location near Mt. Hood College. Just \$52,950 — and trade in your present home.

RELIABLE REALTY
 666-5521

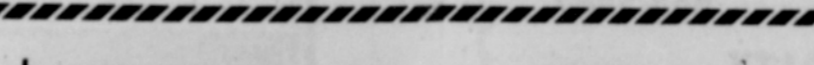


ESTACADA FARM \$145,000
42 1/4 ACRES OF PASTURE LAND, fenced and cross fenced with spring fed pond, barn and loafing shed. Features large remodeled home 3 bdms, 1 1/2 baths, and fireplace, 1 bdrm rental cottage, a building or mobile home site with well and septic tank already in, a productive farm with view. L608.



ATTENTION FARMERS
40 ACRES OF cleared workable farm ground with all the necessary outbuildings, and enough water for some irrigation. This view acreage has a 100 GPM well in addition to a year around producing spring. The land can be used for irrigable crops, nursery stock, or whatever you have in mind. The building includes 850-60 barn and a 35-120 machine shed. Can be divided. \$120,000.00 L649.

United Shelters. REALTORS
ESTACADA 630-3411



SUPER SPLIT
CUSTOM BEAUTY w/all the extras. Built only 6 months ago. Three large bedrooms, 2 baths, main floor. Unfinished family room, 4th bedroom, 3rd bath, 2 fireplace down. Great Gresham area, \$41,500. Earlene Bowman, 243-1382, 761-9123.

OPEN SUNDAY 1-6 PM
BEAUTIFUL 4 bedroom tri-level, 2 baths, 2 fireplaces, family room. Wet bar and double garage, 355 SE 225th, 2 blocks north of 223rd and NE Halsey. Follow signs, \$38,950. Buddy Simmons, 243-1382.

SPECTACULAR VIEW
FROM THIS 3 bedroom daylite basement home on 1 1/2 acres of woodsey seclusion near Sandy, 2 1/2 baths, 2 fireplaces, party room, deck, workshop, gorgeous kitchen. \$45,900. 243-1382.

COUNTRY HOME
NEAR SANDY River out of Sandy. Great starter home. Have others closer to Gresham. 243-1382.

ROD GIRTMAN Inc. REALTOR
 16432 S.E. Stark Street 256-1234



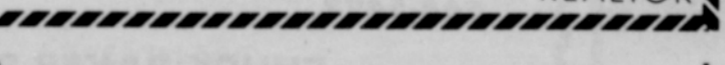
HAVE A DECORATING PARTY
CHOOSE YOUR OWN finish for this home now under construction or take builders own home, a duplicate already finished home less than 1 year old on a 86 x 126 lot, 3 bedroom, 2 bath, 2 fireplaces, family room w/w carpets and for your eve or afternoon relaxation a nice deck. Home has lovely view of country side and Estacada. \$43,500. L636.



SUBURBAN ESTACADA
LOVELY 2 BDRM, custom built ranch on 2.55 acres in an area of new homes with all of the comforts of leisure living. Large living room with fireplace, formal dining room, spacious cheery, convenient kitchen, electronic air filter, 3 ton air conditioner. Large garden spot. Beautiful view. Drilled well and much, much more. Only \$38,950.

DESIGNED FOR THE FAMILY STORM ACRES
A LOVELY 4 bedroom home with split entry, situated on 1 acre near Eagle Creek. Features living room with wall to wall carpets, 2 fireplaces, dream kitchen, daylight basement, AM, FM intercom, 26" view patio deck. Underground utilities. An ideal situation for Mothers apartment in lower level. Call now. Only \$56,500.

ESTACADA 630-3411 **REALTOR**



PLAN ON CANNING?
IF YOU like gardens, trees, cool covered patios, warm white fireplaces, walking to libraries, buses, church, and a neighborhood park for the kids to play, call to see this 3 bedroom 1 1/2 bath, family room home in the Rockwood Alder area. The price is only \$30,750. Tri-Vest Properties, 666-3881, eves. 252-9073.

DAVID DOUGLAS \$39,250
FIRST TIME advertised, over 2100 sq. feet fully finished living area in this 7 year old daylite basement home: carpeted, tiled, 1 1/2 baths, 2 raised hearths, fireplaces, semi secluded yard. Sliding door to 8 x 16 deck. Huge double garage, evenings 760-6181.

STAN WILEY GRESHAM OFFICE Suite 6 19245 S.E. Burnside 243-1382 INC. REALTORS

SUBDIVISION SITE . . .
 . . . 3.39 ACRES, with SEWER and WATER AVAILABLE, ZONED R-7, NEAR GRESHAM — ONLY \$33,500.

GENTLEMAN FARMER . . .
 . . . 1 ACRE of COUNTRY LIVING near the city, FENCED and LANDSCAPED, 3 bdrm newer home, ENCLOSED PATIO, DOUBLE GARAGE — BARLOW HIGH. ONLY \$30,950 with EASY TERMS or TRADE WITH US. M-341



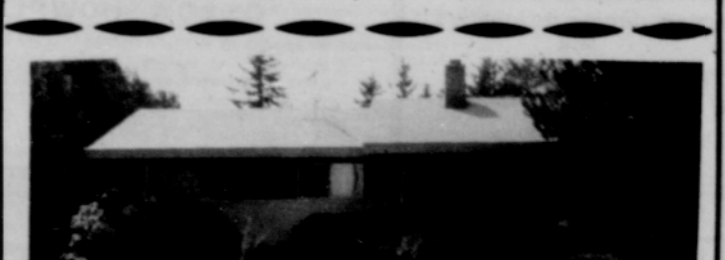
Mayfair Realty Inc.
 123 E. Powell Gresham 665-7131



\$1,000,000 VIEW FOR \$47,950
FROM THIS new daylite basement ranch with a 40' deck overlooking west Gresham. Over 2200 square feet with 3 large bedrooms, 2 baths, formal dining, nook and breakfast bar off step-saving kitchen. Features giant living room with used brick fireplace and raised hearth. Downstairs family room, utility area, and possible 4th bedroom semi-finished to keep the purchase price low. Located in a new Gresham Executive Subdivision of \$50,000 to \$65,000 homes on oversized lot.

Best of all — this home qualifies for \$2,000 tax credit and carries a 10 year home owners warantee from Sonco Inc. Builders.

Reliable Realty 761-1993



DAVID DOUGLAS \$39,250
FIRST TIME advertised, over 2100 sq. feet fully finished living area in this 7 year old daylite basement home: carpeted, tiled, 1 1/2 baths, 2 raised hearths, fireplaces, semi secluded yard. Sliding door to 8 x 16 deck. Huge double garage, evenings 760-6181.

TRINVEST PROPERTIES
 1300 N.E. Division St. Gresham, Ore. 666-3881