

# Sandy cinches division title, takes on top-rated foe

The Sandy Pioneers shot Sweet Home off their home court and clinched the Valley Division title Tuesday night, disgracing second rated Sweet Home 72-48.

Coach Kitchen's team hopes to continue their winning streak this Friday night when they take on Dallas, rated tenth in the state, and leading the league's coast Division. The two outstanding teams, should

provide the home crowd with first rate basketball. Dallas's big man, Mitch Posey trails close behind Sandy's Allen Nippert in total season scoring. Against Sweet Home this week the Pioneers shot an impressive 57 per cent from the field, and made 20 out of 23 shots from the free throw line, tabulating an excellent 87 per cent.

Sweet Home stacked their

defense on the inside to calm Nippert's expertise at the hoop, and succeeded to hold him to seven shots for the entire game. Coach Kitchen said he was pleased with his top rated team's performance this week at Sweet Home, although he was disappointed with his men's rebounding and defensive play.

Sweet Home led the game for the first few minutes of play

and then fell to the over-powering Pioneers for the duration of the game. As Kitchen explained, "we methodically took them apart." With Sweet Home stacking the inside, Sandy shooters took advantage of the perimeter. Dan Turin led the shooting with

18, Steve Konell 14, Allen Nippert 14, Gary Blount 8, Mark Covey 2, Larry Dahrens 6, John Alps 2, Craig Lundy 6, and Kevin Kuzmesky 2.

Sweet Home's defeat came in the aftermath of shutting out Forest Grove 89-52 last Friday on the opponents home court.

Coach Kitchen said this is the highest point total his team has accumulated since he has been at Sandy High School.

The coach substituted freely at Forest Grove and commented after the game that he is very impressed with his second team's playing ability.

"Our second team is becoming much more competitive and have improved tremendously from the first of the year."

Dropping buckets for Sandy last Friday night was Nippert with 26, Turin 8, Miller 16, Blount 10, Koepke 4, Alps 4, Konell 15, Dahrens 2, Jackson 2, Kuzmesky 2.

Sandy's home game against Silverton scheduled for Friday, March 1, has been rescheduled for Thursday Feb. 28, as not to coincide with the Coast Division playoffs slated for Friday night.

In competition the last few weeks Sandy's Junior Varsity Black team lost to Astoria 45-30, beat Central 73-70, beat Forest Grove 84-56, and beat Sweet Home this week 75-62.

The Pioneer Junior Varsity Red team lost to Central 49-41, beat Forest Grove 49-46, and lost to Sweet Home 45-47.

## BOWLING

Early Birds		
2-18-74		
	W	L
Zig Zag Inn	13	9
Arco	13	9
Sandy Lbr	12½	8½
Lewis Hrdwre	11½	9½
Hide-A-Way	10	11
Union 76	9	12
Sandy Truck Line	9	12
Swails	6	15

High individual game and series: Lex Secomb 197 and 462.  
High team game and series: Zig Zag Inn 494 and 1,422.

Approximately 9 per cent of the American people are below the poverty line today. The figure was 16 per cent in 1963.

## Tri-Met bus for skiers

Skiers, cramped by gas shortages, will have another way of getting to Government Camp and Timberline ski slopes on weekends beginning Saturday, Feb. 23, Tri-Met General Manager Tom King announced Friday.

Special bus service will originate both Saturdays and Sundays at Bernard Beaverton Mall, making stops at Mall 205 and Gresham to pick up skiers. Bus departures are from

Beaverton at 7 a.m., Mall 205 at 7:30 a.m. and the corner of Powell and Hood in Gresham at 7:45 a.m. Free parking facilities are provided at those locations by the two shopping centers and Oregon Trail Savings and Loan.

Initially, the ski bus will operate on an advance ticket sales basis in order to obtain maximum bus ridership, and help determine the number of busses placed on weekend

service to and from Mt. Hood. King said service was begun to aid in getting skiers to Mt. Hood, because of the gasoline shortage.

Tri-Met's ski bus (called the Sitz-Boomer Special) will be equipped with an opposite ski rack. Bus drivers will assist riders in mounting their skis. Stops will be at Ski Bowl and Timberline Lodge.

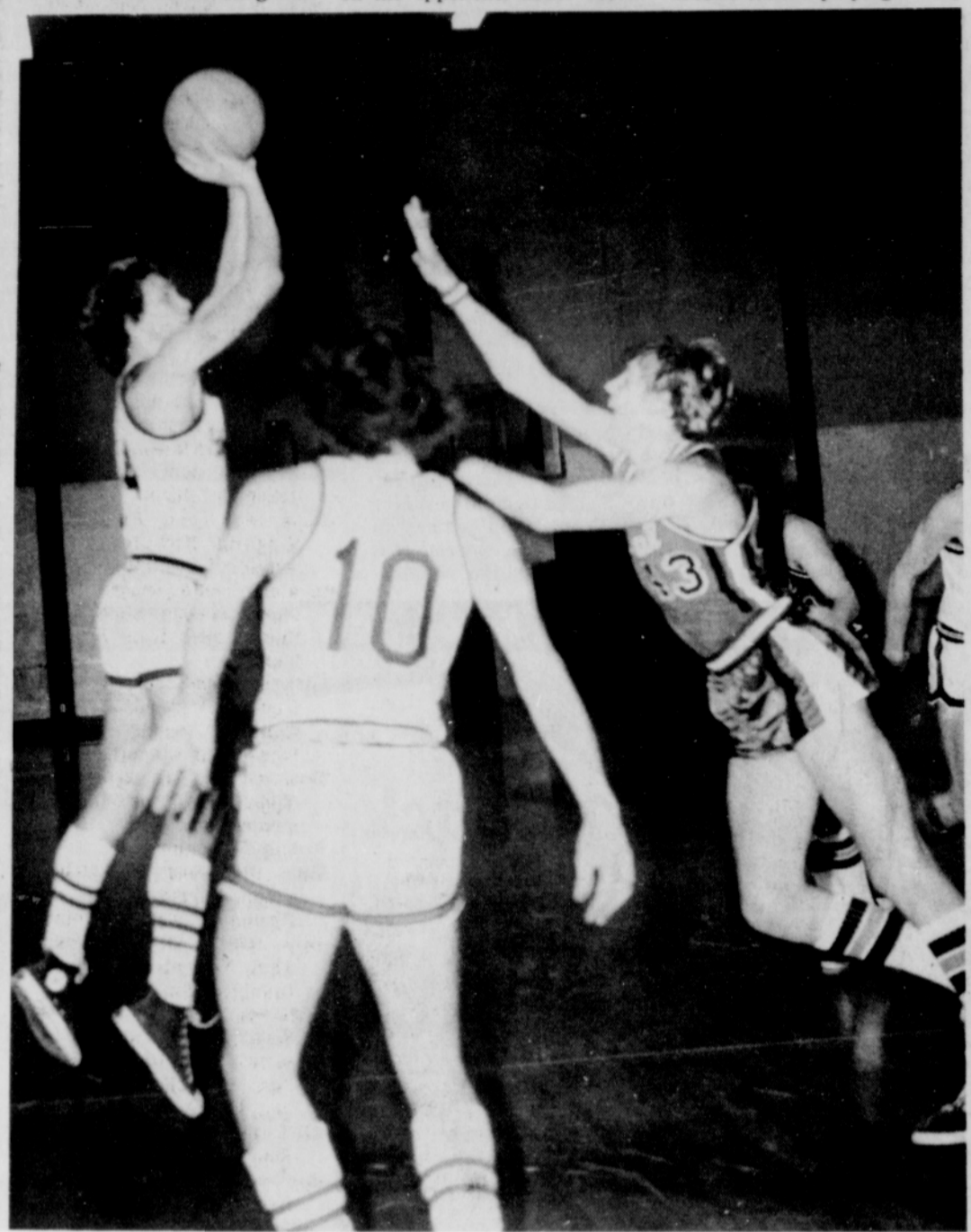
Timberline Lodge manager Dick Kohnstamm said that in event of adverse road conditions in the Timberline Loop, a four wheel drive vehicle would be sent to Ski Bowl to shuttle riders wishing to go to Timberline Lodge. Skiers would also be returned in time to board the returning Tri-Met bus.

Return trips will begin at Timberline about 4 p.m. with a stop at Ski Bowl about 4:15 p.m.

Round trip tickets for the Tri-Met ski bus are available at Security Bank of Oregon at Bernard Beaverton Mall, Mall 205 Management Office in Mall 205 Shopping Center, Oregon Trail Savings and Loan in Gresham at 236 N.E. Roberts, and the Tri-Met Marketing Office, 4314 SE 17th between Powell and Holgate.

Ticket information can be obtained by calling Tri-Met marketing 233-8373.

In fiscal 1973, 70,141 Mexican immigrants were admitted to the U.S., compared with 37,969 in 1965.



TEAMMATES MARK Covey, 10, and Allen Nippert, 34, await Steve Konell's delivery towards the basket.

(Post Photo)

**The First of 3 GRAND OPENING SALES!!**

**FRUIT TREES Dwarf & Semi Dwarf**

- ★ Apple ★ Peach ★ Cherry
- ★ Pear ★ Plum ★ Prune

**\$5.95 up**  
HIGHEST QUALITY TREES

<b>Grapes</b>	<b>Blue Berries</b>
<b>Currants</b>	2 YR. OLDS
<b>Raspberries</b>	<b>\$1.95</b>
<b>Gooseberry</b>	3 YR. OLDS
<b>69¢</b>	<b>\$2.95</b>
<b>3 for \$1</b>	<b>CRIMSON KING</b>
<b>Ask about our</b>	<b>MAPLE</b>
<b>Planscaper</b>	5 to 6 Ft.
<b>Service</b>	Reg. \$7.95
<b>Master Charge</b>	<b>\$5.95</b>
Hours 9 a.m. to 6 p.m.	<b>SAKAMERICARD</b>
10 a.m. to 5 p.m. Sundays	

**DRAKE'S 7 DEE'S NURSERY**  
165th & Stark  
252-7736



THE SEVENTH grade Sandy basketballers, coached by Mr. Woollard, have won seven games so far this season and dropped only one. This month they dumped North Marion 56-27, and stuffed Canby 41-25. All 20 of Coach Woollard's men played in both of these games.

## BMAC enters league meet

Blue Marlin swimmers will have less than a month to practice for the Columbia Basin Swim League Red Conference, slated for the weekend of March 9 and 10. The meet, to be held in Longview this year, will determine the league team championship.

Besides the BMAC, the league includes Cowlitz County, Salem Aquatic Club, Cottage Grove, Oregon City, Portland Northeast "Y", River Road (Eugene), Benton County "Y", Salem "Y", and host team, Longview "Y".

For each event in the meet, there will be both preliminary and final races. Preliminaries consist of many "heats" of six swimmers each. In the evening finals, the six swimmers with the fastest times for each event will compete for the trophies and medals.

All BMAC swimmers have the opportunity to participate in this team championship meet. Parents of team mem-

bers will chaperone the group, at the pool, and motel. Those wishing to help should contact the Sandy Pool at 668-6333, or Mrs. Jan Neuenfeldt at 668-4594.

Hershel McGriff, of Bridal Veil, fell out of competition at the Daytona '500' last weekend when his car crashed on the fourth lap of competition.

After qualifying fourth earlier in the week, McGriff's "Almost Heaven West Virginia" Dodge became airborne and he wrecked on the speedway's backstretch. He came out of the accident with only a minor cut on his nose.

Unless given substance through their creation, thoughts would be lost in the evolution of time.  
Janet Giese

**WELCOME!**  
**ADULT or CHILDREN GROUPS**  
Come in and Browse.  
**Fun - Interesting - Educational**  
(Great Way to Earn a Merit Badge)

For Day or Evening Group  
Appointments Please Call Evenings  
**665-6752**

Hours 10:30 to 5:30 Tuesday through Sunday

**Gresham Gallery**  
735 S.E. Mt. Hood Hwy.  
Just east of Burnside-Powell intersection  
Between Powell and Palmquist

**1 Free Slab of Bacon with purchase of:**

**Side or Whole Beef 93¢**  
Grain Fed, Tender Beef

**Sides of Pork 79¢**  
Grain Fed

ALL MEAT PRICES INCLUDE CUTTING, WRAPPING & QUICK FREEZING

Present this **COUPON** For \$1.00 off our 30 lb. Beef Pack or 30 lb. Pork Pack

**Beef Locker Pack \$35.90**  
10 lbs. Gr. Beef  
10 lbs. Steaks  
10 lbs. Roasts

WE ACCEPT FOOD STAMPS • Offer ends Feb. 26

**DICK WOLFE MEATS**  
1.3 miles w. of Boring on Hwy. 26 • 658-3425 or 663-4402

**AT NEIL RIEGELMANN APPLIANCES IN DOWNTOWN GRESHAM**

**Frigidaire 17 Cu. Ft. TOP-FREEZER Refrigerator-Freezer**

**Frigidaire 30" Ranges**  
Tomorrow's ideas for effortless cleaning, automatic cooking, elegant simplicity, here today from Frigidaire.

Touch a cooking function, touch a cooking time or temperature. And you're cooking. That's exactly how easy it is to cook on Frigidaire's Touch-N-Cook Range. Behind its smooth controls (shown at right), dependable solid state circuitry remembers and executes your most exacting cooking instructions with just the touch of a finger. And the Touch-N-Cook Range makes cleaning just as easy as cooking. Once the oven door is locked, just a touch of a finger activates the Electroclean oven false available on many other Frigidaire 30" range models. Model RC1E-30COW.

As seen on TV... the beautiful new "Touch and Cook"

**Reconditioned Appliance Sale**  
90 Day Guarantee  
WASHERS-DRYERS  
RANGES-REFRIGERATORS  
DISHWASHERS  
Fine Trade-Ins, All Brands  
Fantastic Savings!

**Neil Riegelmann Appliances**  
295 N.E. 2nd Gresham 665-4158