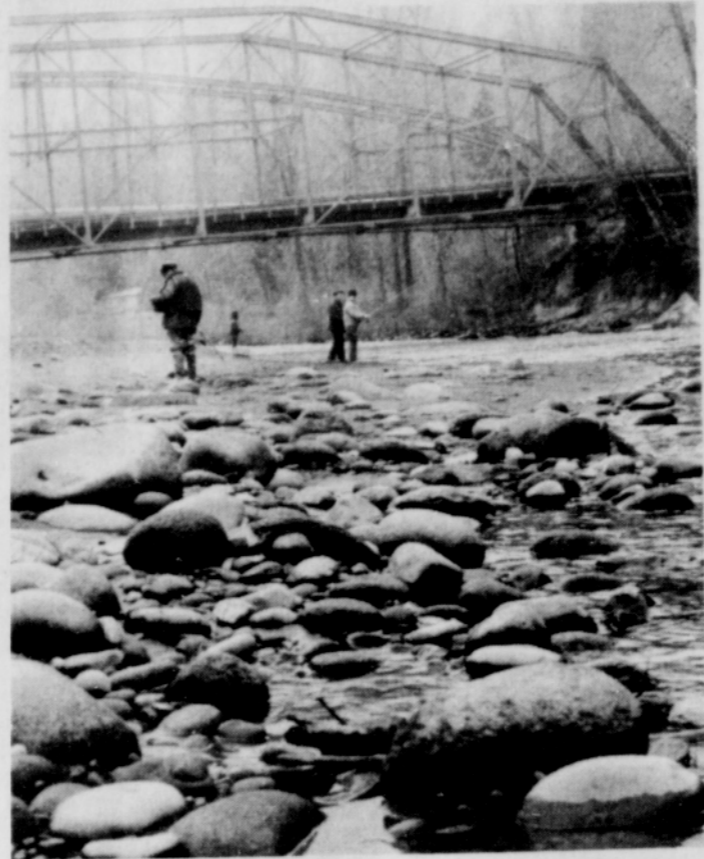


FROM  
The RIVER'S  
EDGE

By  
George MacAlevy



THESE MEN are employing that age old method of overcoming the foggy, dreary, wet February blues: fishing. The winding Sandy River offers local residents this antidote each day every day of the year.

**SMOKING INCREASES** increase of nearly three packs  
Consumption of cigarettes from 1972 and is the most  
was on the rise in the U.S. in cigarettes smoked per adult  
1973, equal to about 205 packs since the average was almost  
for each adult American 18 210 packs of 20 cigarettes for  
years and older. This is an each person in 1968.

**CARROLL FUNERAL HOME**  
257 S. ROBERTS AVE. GRESHAM, OREGON  
PHONE 665-1117

Life has a way of evening things up. For every woman who makes a fool of some man, there's a woman who makes a man of some fool.

**GAME HACKLE WET FLIES**  
Through the years, East and West; and throughout the pages of angling history, the Game Hackle Wet Fly has been a most productive class of flies. These flies are of ancient origin and simple design. Some consist of a hackle only; some a hackle and a body; and some of them a hackle, tail and body. None of them have wings. Despite their simplicity, they are not the easiest to tie for two reasons. They are mostly used in small sizes and the very character of a gamebird hackle makes it difficult to apply to a hook.

"What is this answer to a fisherman's prayer?" This may well be the first question you ask. "I don't see these things advertised in stores." No, you don't. They do not fit into any Madison Avenue merchandising approach. Most of them are insignificant in appearance, and any attempt to glamorize the package would only emphasize this. They appeal to trout and experienced fly-men only.

The hackle feathers on any game bird are the neck and cape feathers close behind the bird's head. They are shaped not at all like the conventional cock hackle. Instead they are very short and often broad and rounded. The fly consists of a whisk of this hackle for a tail, a body of silk, quill or spun fur, and the game hackle. Because of the extreme shortness of these feathers, it may take as many as three of them to create a full hackle. My personal preference is a leaning to the sparse side, so I rarely use more than two.

All flies must have an identification. The names of these flies are such as to delineate their makeup. In any of the older European and English treatises on flies or trout fishing, you will find references to flies such as "Partridge and Red," "Partridge and Yellow," etc. These are tied with hackles of the French Partridge. They may be either in brown or grey shades with darker brown penciling. The color in the name is the body color. Most of the older books referred to the body as silk. These partridge hackled flies go back into antiquity.

Equally as old are the grouse hackled flies of England and Scotland. "Grouse and Green" and "Grouse and Black" are old standbys throughout the British Isles. In Ireland, jay hackles (the Irish Jay is a true blue) are prevalent. Some other birds whose plumage figures in the game hackle category are landrail, moorhen, and heron. One bird whose feathers are important

here is the Guinea fowl. This is a domesticated bird derived from a gamebird. In the United States, these game hackles are extremely useful. We have taken as our own the partridge and grouse patterns, but even more so the guinea patterns. In this country, we also hackle flies with the rump feathers of the ringneck pheasant. In the Western United States, there are many Alpine lakes that were originally devoid of fish. A large number of these now carry populations of the Eastern Brook Trout.

This charr has made a success of life in these short season lakes. The Guinea hackle series are extremely valuable flies in these lakes. Yellow and orange are the favored body colors for these trout. A condor quill body with a guinea hackle is a good mosquito imitation in these same lakes when the snow mosquitoes of June and July are emerging from the late snowbanks around the margins of these high lakes.

The most successful game hackle pattern of all in the Northwest and British Columbia is the "Carey Special." This fly is more "game" than the rest. Tail, body, and hackle are all made up from the rump feathers of a mature cock ringneck pheasant. These are the metallic blue-bronze-green

**County zoning plan discussed**

Dominic Mancini, the Interim Director of the Clackamas County Planning Department, assisted by Bruce Davis, also of the Planning Department, were the guest speakers at the breakfast meeting of the Clackamas County Chapter of the Society of Certified Appraisers of Oregon, last week.

Mancini discussed a few of the proposed zoning districts in Clackamas County such as the Exclusive Farm Use District (EFU), and the General Timber District (GTD), as well as the overall comprehensive plan to zone the whole county. Davis discussed the functions of the Planning Department in an effort to familiarize the appraisers with each function in planning as well as the people who work with each function.

"Clackamas County was expected to be zoned by April, 1974, but the plans are still in the rough draft stage," says Davis.

feathers of which there is quite a sizable patch on the birds back at the root of the tail. To build this fly, apply a whisk of the feather for a tail, wind three feathers flat around the shank of the hood to make a rather shaggy body, and finish off with three more feathers wound as a hackle. Size 6 and 8 are the usual hooks used for this fly, although smaller ones are occasionally useful. British Columbia Kamloops are suckers for this one, as are stream and lake rainbows in Oregon and Washington.

If I were to be restricted to one fly pattern for the rest of my fly fishing life, the Carey Special would be the one. Rainbows, brooks, and cutthroats all go for it. In the mountain lakes towards evening, regardless of what the fish are naturally feeding on,

they find the Carey Special irresistible. It is good all day long in brook trout lakes. It has few peers in deep water as a trolled fly. Tie it sparse for casting in the shallows. Tie it full and bushy on heavy iron for trolling or sishing deep. Tie it full palmer for fast water. But use it in any water carrying trout and see for yourself. In using these flies over many years, I have greatly cut down on the number of variations to carry. A good starting list would include Partridge and Red, Partridge and Blue, Guinea and Condor, Guinea and Yellow, and Guinea and Orange in size 16; Grouse and Green, Grouse and Black, and Guinea and Tan in size 14; Carey Special tied full in size 6; Carey Special tied palmer in size 8, and Carey Special tied sparse in sizes 8 and 10.

Pay Utility Bills Here — Northwest Gas — PGE — General Telephone — Rockwood Water

**U.S.D.A. Choice Beef**

**Chuck Steak** lb. **89¢**

**Ground Beef** 2 lbs. or more lb. **89¢**

**U.S.D.A. Choice Beef**

**Rib Steak** lb. **\$1.59**

**U.S.D.A. Choice Beef**

**Rib Roast** Lge. End. lb. **\$1.49**

**U.S.D.A. Choice Beef**

**Swiss Steak** lb. **\$1.39**

**U.S.D.A. Choice Beef**

**Round Bone Roast** lb. **\$1.29**

**U.S.D.A. Choice Beef Boneless**

**Chuck Roast** lb. **\$1.49**

**Meaty, end cut**

**Pork Chop** lb. **\$1.19**

**Tenderloin**

**Pork Chop** lb. **\$1.49**

**Center Cut**

**Rib Pork Chop** lb. **\$1.39**

**Fresh Daily**

**U.S.D.A. Boneless Beef**

**Chuck Steak** lb. **\$1.59**

**U.S.D.A. Boneless Beef**

**Cross Rib Roast** lb. **\$1.59**

**Pork Loin Roast** 4-5 lb. Avg. lb. **\$1.09**

**DARIGOLD CHEESE 10% OFF All Cuts**

**A WAGON LOAD OF BUYS!!**

<b>Pheasant</b> <b>FRUIT COCKTAIL</b> 16-oz. Tin <b>3/\$1.00</b>	<b>U&amp;I</b> <b>SUGAR</b> 10-lb. Bag <b>\$1.79</b>
<b>ROYAL</b> <b>PUDDING</b> 3-oz. Pkg. <b>8/\$1.00</b>	<b>Majorette Dinners</b> <b>MACARONI &amp; CHEESE</b> 7 1/2-oz. Pkg. <b>5/\$1.00</b>
<b>Del Monte</b> <b>Chunk Style TUNA</b> 6 1/2 oz. <b>2/99¢</b>	<b>Betty Crocker</b> <b>SNACKIN' CAKE</b> 14 1/2 oz. <b>59¢</b>
<b>Pillsbury Roll</b> 15 oz. <b>COOKIE MIX</b> <b>59¢</b>	<b>Pheasant</b> <b>ELBERTA PEACHES</b> 29 oz. Tin <b>2/89¢</b>
<b>Pheasant</b> 15 oz. Tin <b>CANNED VEGETABLES</b> <b>4/89¢</b>	<b>Steinfeld's</b> <b>KRAUT SALAD</b> 22 oz. Jar <b>39¢</b>
<b>16 oz. Blue Seal</b> <b>MARGARINE</b> <b>3/\$1.00</b>	<b>Continental</b> <b>MARSHMALLOWS</b> 10 oz. Pkg. <b>4/\$1.00</b>
<b>Sweatshirts</b> <b>SHIRTS</b> \$2.99 Asst. Colors	<b>Stretch</b> Boys White Sport <b>SOCKS</b> 2 pr. <b>88¢</b>
<b>MJB</b> <b>RICE MIX</b> 6-oz. <b>3/\$1.00</b>	<b>MRS. TUCKER'S</b> <b>OIL</b> 24-oz. <b>79¢</b>
<b>HI-G</b> <b>Fruit Flavored DRINKS</b> 46-oz. Tin <b>3/\$1.00</b>	<b>Humble</b> Tile & Cast Iron <b>TRIVETS</b> ea. <b>88¢</b>
<b>BANANAS</b> 8 LBS. <b>\$1.00</b>	<b>Golden Ripe</b>
<b>Fresh</b> <b>Mushrooms</b> lb. <b>75¢</b>	<b>Cabbage</b> Large lb. <b>13¢</b>
<b>Oranges</b> 7 lbs. <b>\$1.00</b>	<b>Cucumbers</b> 2/29¢
<b>Apples</b> Red Delicious 5 lbs. <b>\$1.00</b>	

**ZIM'S 12-MILE** 223rd & Stark Prices Effective Wed., Thurs., Fri., Open 9 a.m. - 9 p.m. Daily Sat. Feb. 20 thru 23 9 a.m. - 8 p.m. Sundays WE GIVE S&H GREEN STAMPS!!

**THE COUNTRY STORE**

Lots of Free & Easy Parking ... Frozen Food Lockers ... Feed Store ... Cafe. Open 6 A.M. - 6 P.M.



CHRISTY MILLER and friend Clarence stop to rest by the upper grade building during a walk in sunshine last Friday. Clarence is still a puppy, claims Christy! (Post Photo)

S&H Stamps — Frozen Foods — Lockers — U.S. Postal Substation — Money Orders — Hardware Dept. — Lockers — Money Orders

S&H Stamps — Frozen Foods — Lockers — U.S. Postal Substation — Money Orders — Hardware Dept. — Lockers — Money Orders