

**LES SCHWAB**

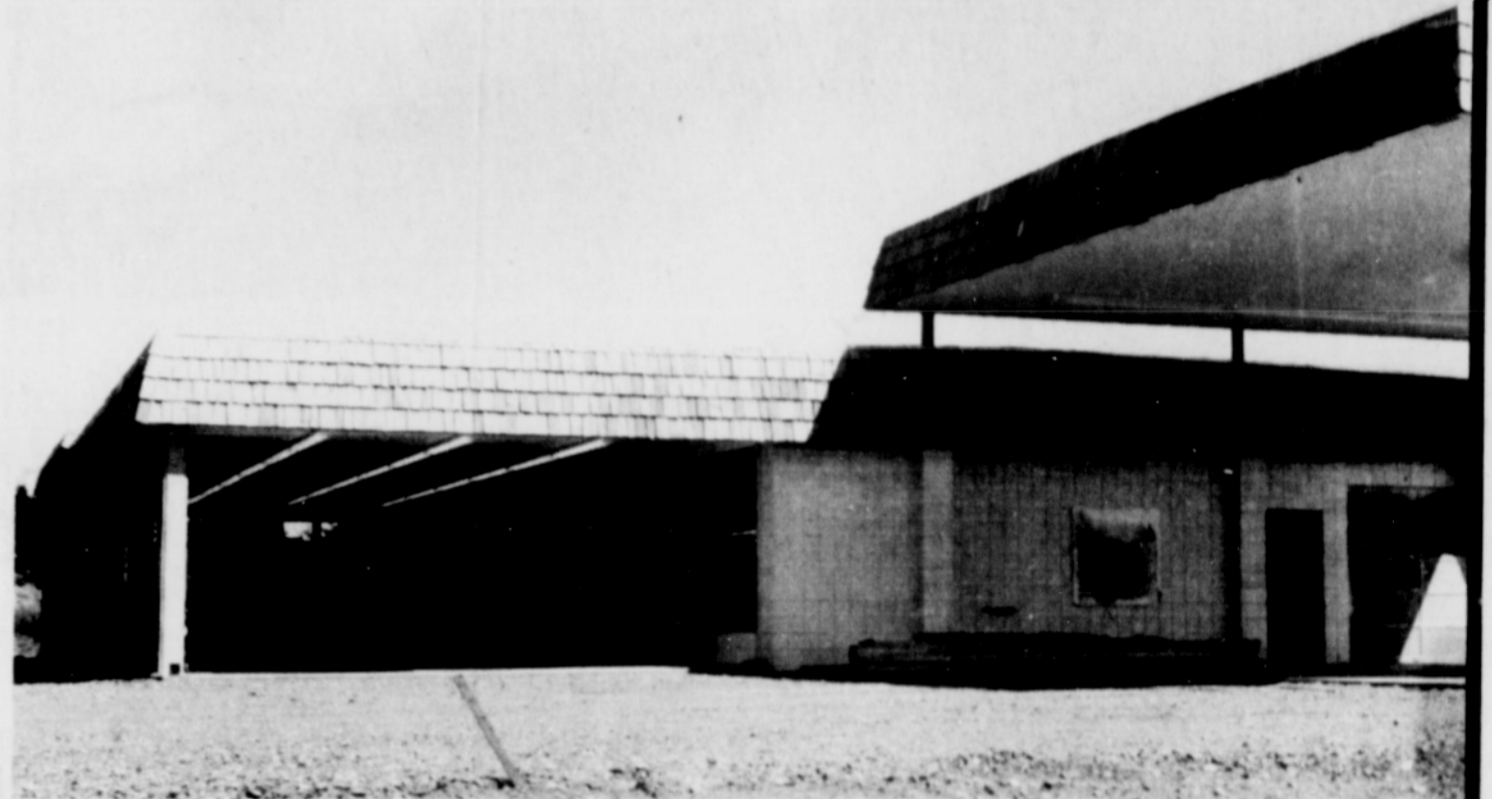
**Tires**

HOME OF THE SUDDEN-SERVICE BOYS!

**NOW OPEN**

... bringing the famous 'Sudden Service' boys to this area with a new way to buy tires ...

LES SCHWAB - the largest independent tire dealer in the Pacific Northwest - brings to East County the 'Supermarket Way to Buy Tires.' Many brands to choose from: Multi-Mile, Seiberling, Michelin, Toyo, Monarch, Formula I, and National.



**PICK A TIRE — PICK A PRICE!**

The new Les Schwab Tire Center in Gresham - 390 E. Burnside

**POLYESTER FULL FOUR PLY FROM SEIBERLING**



**ALL NEW SEIBERLING 200**

The magic of polyester combined with the exclusive Seiberling "chain-design" tread offers you a soft, smooth ride at a price lower than "new-car" tires.

SIZE	WHITE	BLACK	TAX
C78 x 13	23.07	20.78	1.93
C78 x 14	23.54	21.18	2.08
E78 x 14	25.03	22.52	2.72
F78 x 14	26.27	23.65	2.37
G78 x 14	27.69	24.93	2.53
F78 x 15	26.27	23.65	2.42
G78 x 15	27.69	24.93	2.60
H78 x 15	29.84	26.86	2.80
L78 x 15	32.88		3.13

All prices exchange with old tire off car. Add '1 if no trade

**LES SCHWAB SPR SUPER RETREAD**



FREE MOUNTING - All prices exchange with recappable trade-in. Add \$2 per tire to these prices if no trade-in. Add \$1 for whitewalls.

SIZE	PRICE
735 x 14	590 x 15
775 x 14	735 x 15
560 x 15	775 x 15
<b>4 for \$40.00 Plus F.E.T.</b>	
825 x 14	815 x 15
855 x 14	845 x 15
885 x 14	885 x 15
950 x 14	
<b>4 for \$50.00 Plus F.E.T.</b>	

PICKUP and TRUCK TIRE SPECIAL!

**Seiberling Highway Service**

Size	Ply	WITH-TRADE PRICE	NO-TRADE PRICE	FED. TAX
670 x 15	6	19.19	21.19	2.40
650 x 16	6	19.04	22.04	2.58
700 x 15	6	20.14	24.14	2.80
700 x 16	6	21.23	25.23	2.95
750 x 16	8	28.86	33.86	3.69

All commercial and passenger tires covered with a complete, written road hazard and workmanship and material warranty.



**LES SCHWAB COMMERCIAL TIRE WARRANTY**

1. FULL ROAD HAZARD WARRANTY - All small truck tires (700 and smaller) sold by Les Schwab Tire Centers are guaranteed against road hazards down to 3/32 tread depth. An adjustment will be allowed on a replacement basis only, based upon remaining tread depth you have left.

No adjustment can be allowed for tire failures due to:

- (a) Run flat, overload or abuse
- (b) Misalignment of suspension system
- (c) Curbside
- (d) Cut or punctured by vandalism
- (e) Wheels out of round or balance

**LES SCHWAB Service and Warranty Policy**

Your Original Cost Is Your Final Cost

The Les Schwab Service and Warranty Policy is designed to give you the best value for your money and will be given service and warranty upon presentation of this policy.

1. FREE FLAT REPAIR
2. FREE TIRE BALANCE
3. FREE TIRE INSPECTION
4. FREE TIRE ROTATION
5. FREE AIR CHECK
6. FREE TIRE REPLACEMENT
7. CASH FUND GUARANTEE

All flats repaired free of charge for the life of the tire. Tires will be replaced free of charge if necessary. Tires will be replaced for road hazards and curbside damage only. Free rotation and balancing every 5000 miles. Free inflation to a safe level at check service. New Passenger Tires and Retreads, that last during the first 25% of tread wear will be replaced on a no charge basis.

Should any of these tires fail or be damaged beyond repair within the first 25% of tread wear you will have a credit toward the cost of the remaining tread. Credits are based on the purchase price of the tire.

More than 40 locations to serve you in Oregon - Washington - Idaho



**Multi-Mile Custom**

Economical whitewall, 4 full ply, continental wrap-around tread design

SIZE	PRICE	TAX
650 x 13	13.84	1.73
700 x 13	17.70	1.88
775 x 14	18.77	2.09
825 x 14	19.32	2.24
855 x 14	20.96	2.43
560 x 15	16.69	1.74
825 x 15	19.84	2.30
855 x 15	22.19	2.47

All prices exchange with old tire off car. Add '1 if no trade.

**3 EASY WAYS TO BUY!**

- ★ Les Schwab Easy Terms
- ★ BankAmericard
- ★ Master Charge Card

**Flats fixed FREE for ladies**

Call 666-9496

**OPEN 6 DAYS A WEEK**

We're here to help you  
**8 a.m. to 6 p.m.**  
Mondays thru Saturdays

**LES SCHWAB**

**Tires**

HOME OF THE SUDDEN-SERVICE BOYS!

**390 E. Burnside**  
(Across from Frank Newell Pontiac)

**666-9496**