

# All that glitters is not Christmas

By NANCY BARKER  
Staff Writer

Where do you find Christmas? Is it under the splendidly festooned tree, in bright, beribboned boxes? Is it, perhaps, on the lavish yule table, laden with goodies? Or is it in the sparkling cup of Christmas cheer, shared by the fireside?

Maybe; but is that, as the saying goes, "where it's at"? If you're looking for Christmas, you might try a few other places. Santa Claus might help you, but remember that Christmas is not the birthday of the man in the red suit.

It is a birthday, though. It might help you to recall just whose birthday it is you're celebrating, and how the celebration started. The very first Christmas party was held in a lowly stable, without benefit of decorations, except for one brilliant star above in the Bethlehem sky.

There was no feast, nor even a table to hold one. Possibly, there were leftovers from the adjacent inn, or a shared meal with shepherds from nearby fields. Whatever it might have been, it was hardly festive fare.

Besides those shepherds, the guest list included several farm animals, living in the same stable. The proud parents of the Birthday Child had no choice but to invite them, since proximity demanded it. Thus far, it wasn't much of a social event.

But wait! The last three guests, who arrived a little late, seemed definitely upper crust, according to reliable sources. Some accounts even refer to them as kings. These three from the east were evidently so important that the tyrant who ruled the land deferred to their counsel.

And they, in turn, bowed down to the Birthday Child, and brought him gifts. The very first Christmas presents were gold, frankincense, and myrrh, an exotic array, but hardly practical offerings for a family in need of food and shelter.

Still, the three out-of-towners and their gifts lent a note of elegance to the occasion. However, the sages were actually not the most impressive guests. Some early arrivals, heretofore unmentioned, claimed that distinction.

Although these ethereal beings arrived on the scene promptly, their inclusion on the guest list is subject to question. For one thing, they seemed to lack substance, plus they used a most unusual mode of transportation. Also, they seemed fond of making rather terrifying pronouncements.

Nevertheless, the winged ones were very special guests; especially if you consider that they were only envoys from One more awesome than they. Their presence underscored a significance to the event, which was to change the future.

All in all, the first Christmas party was a strange celebration. Those in attendance found Christmas in a very humble and unlikely place.

You might find Christmas anywhere; especially if you look within yourself, and find it there first.

## HOODLAND LUTHERAN CHURCH (Hoodland Women's Club)

Sunday, Dec. 24: 9:30 a.m. Worship service; 10:30 Sunday school; 6:30 p.m. Christmas program; 8:00 Social hour; 8:30 Candlelight service.

## IMMANUEL LUTHERAN CHURCH

Sunday, Dec. 24: 9:00 a.m. Worship service; 4:00 p.m. Worship with Sunday school children; 11:00 Candlelight worship.  
Monday, Dec. 25: 10:00 a.m. Christmas festival worship.

## SANDY CHURCH OF CHRIST

Sunday, Dec. 24: 10:00 a.m. Bible classes; 11:00 a.m. Morning worship; 6:30 p.m. Evening worship.

## ST. JUDE'S COLLEGIATE CHURCH

Sunday, Dec. 24: 9:30 a.m. Family service; 7:30 p.m. Annual Christmas party for residents of the home, 11:00 p.m. Traditional midnight mass, carols, celebrant Father Rene', S.S.P.  
Monday, Dec. 25: 10:00 a.m. Holy Communion, celebrant, Father Theodore, S.S.P.

## THE CHAPEL OF THE HILLS

Sunday, Dec. 24: 9:45 a.m. Bible school; 11:00 a.m. Morning worship

## HOODLAND CHAPEL

Sunday, Dec. 24: 11:00 a.m. Morning worship

## CRESTVIEW BAPTIST CHURCH

6:00 p.m. Candlelight vesper service.

Sunday, Dec. 24: 9:45 a.m. Sunday School; 11:00 a.m. Worship service; 6:00 p.m. Candlelight vesper service.

## SANDY BAPTIST CHAPEL

Sunday, Dec. 24: 9:45 a.m. Sunday school; 11:00 a.m. Worship service; 7:00 p.m. Evening candlelight service with carol sing, caroling in area to follow, party at church afterwards

## COMMUNITY PRESBYTERIAN CHURCH

Sunday, Dec. 24: 9:30 a.m. Fellowship worship and Sunday school; 11:00 a.m. Morning worship; 7:30 p.m. Christmas eve candlelight service

## ST. MICHAEL'S CATHOLIC CHURCH

Sandy: Sunday, Dec. 24: Midnight Mass  
Monday, Dec. 25: 9:30 a.m. Morning Mass; 6:00 p.m. Mass  
Welches: Sunday, Dec. 24: 10:00 p.m. Mass  
Monday, Dec. 25: 8:00 a.m. Christmas Worship

## SANDY SEVENTH-DAY ADVENTIST CHURCH

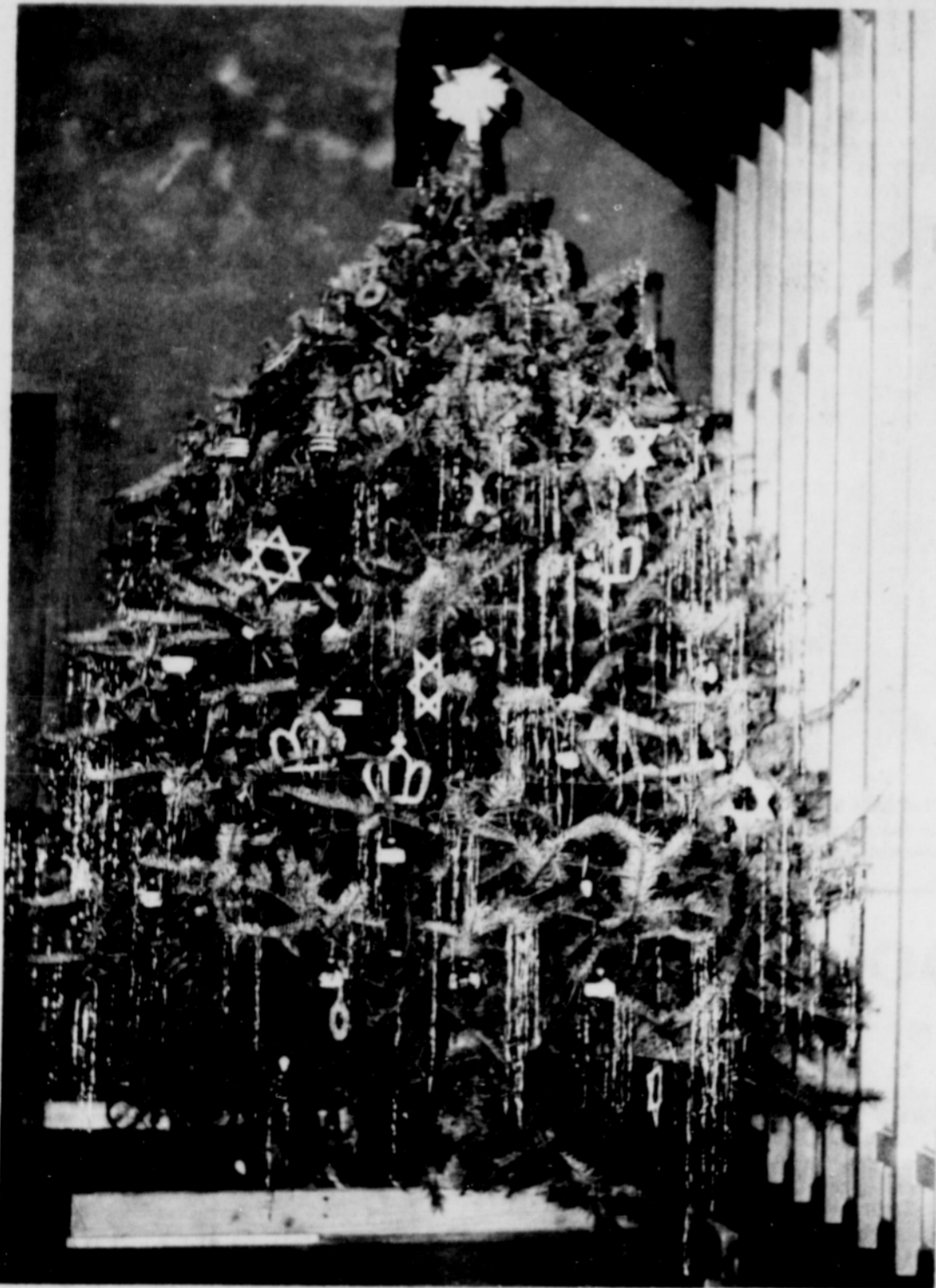
Friday, Dec. 22: 7:30 p.m. Candlelight Communion  
Saturday, Dec. 23: 9:30 a.m. Christmas mission offering  
Sunday, Dec. 24: 11:00 a.m. Devotional talk, Christmas music program; 5:30 p.m. Conclusion of outreach program, caroling to homes in area.

## SANDY ASSEMBLY OF GOD CHURCH

Thursday, Dec. 21: 7:00 p.m. caroling  
Friday, Dec. 22: 8:30 p.m. Sandy Christian Kinder-School program  
Sunday, Dec. 24: 9:45 a.m. Sunday school; 11:00 Morning worship; 5:00 p.m. Christmas play

## SANDY CHURCH OF THE LATTER DAY SAINTS

Sunday, Dec. 24: 10:30 a.m. Sunday school; 5:00 p.m. Sacrament program.



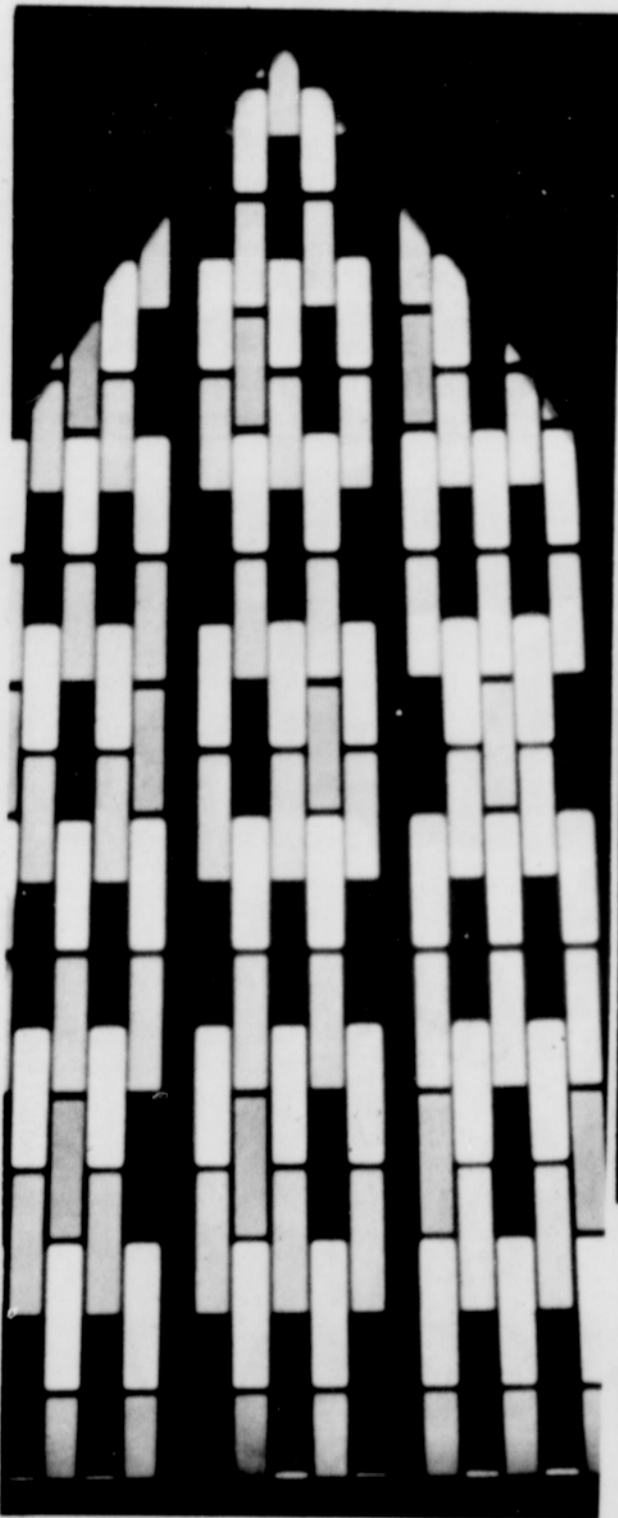
THIS TREE is decorated differently.



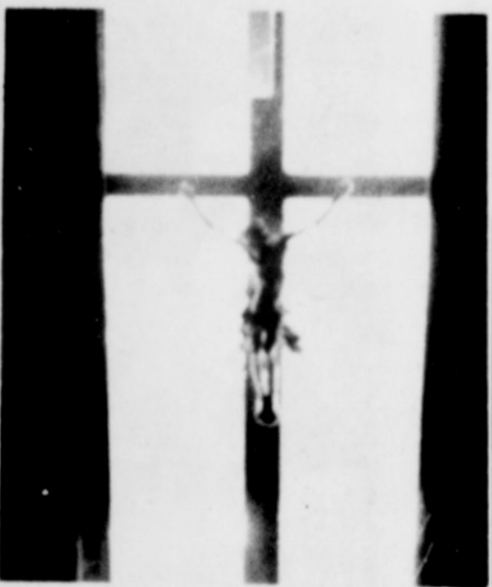
CANDLES SYMBOLIZE the everlasting light.



REMEMBER HOW Christmas began.



YOU MIGHT see Christmas through an illuminated window.

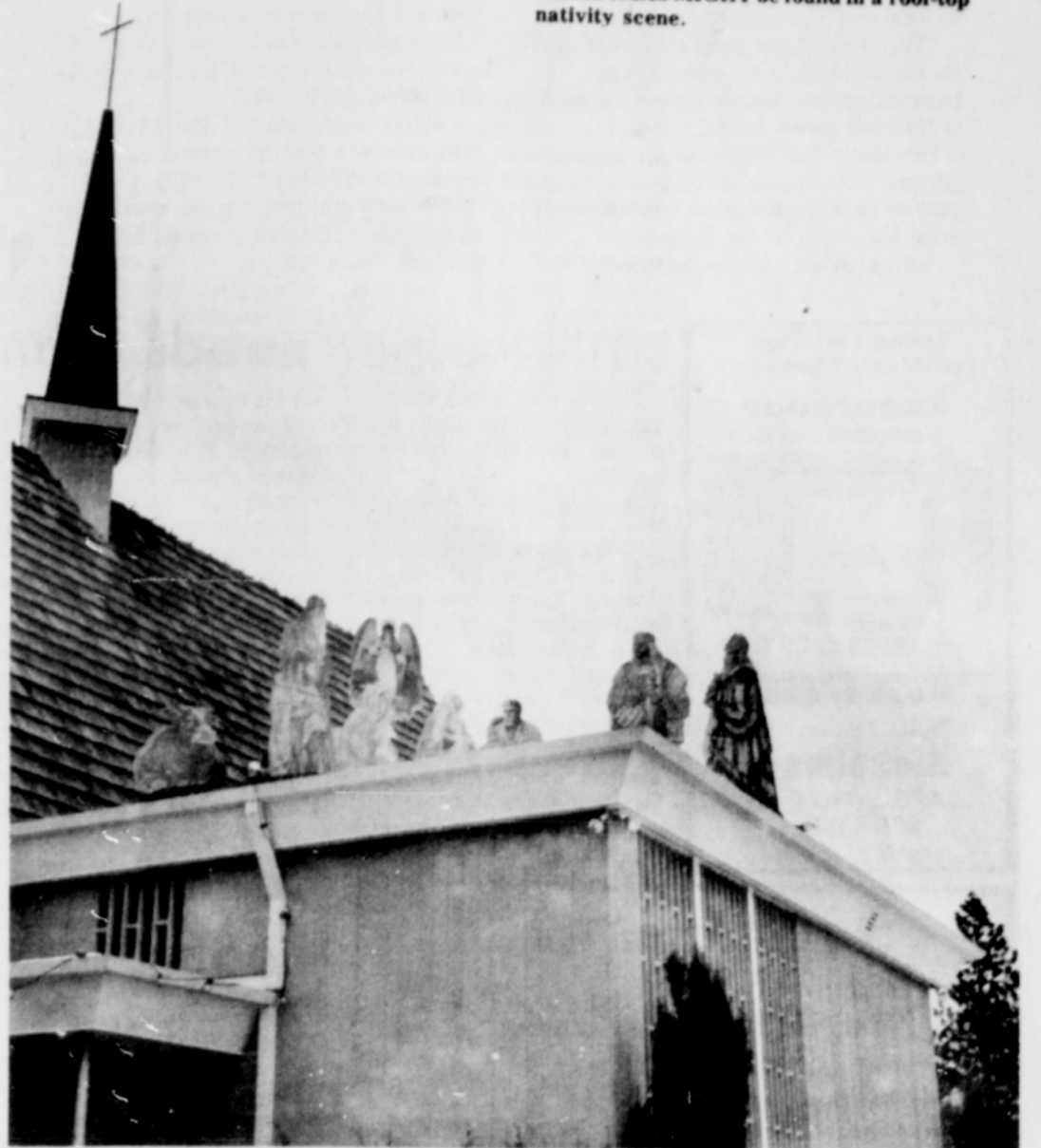


THE FIRST Christmas foreshadowed the future.



MOST OF all, Christmas means joy!

CHRISTMAS MIGHT be found in a roof-top nativity scene.



## Sandy Post

SECTION TWO

SANDY, OREGON, THURSDAY, DECEMBER 21, 1972

Merry Christmas

**JERRY'S REFRIGERATION**  
MOVING SPECIAL  
Good Dec. 21, thru Dec. 28.  
OFF ON USED  
**20%** Washer-Dryer-Refrigerator  
New Location 201 East Proctor

**LAST MINUTE Shoppers Specials**

Complete Selection of Games & Toys.

**CAMERAS**  
GAF Instant Loading \$16.95  
126 Set . . . . .  
**KODAK POCKET** \$29.95  
Instamatic . . . . .  
**Polaroid Square Shooter** \$24.95  
(Don't Forget!) Film, Bulbs & Batteries  
Come In and Have Your Camera Batteries Checked Free

**Boxed Chocolates** by Rogers, Whitman Saylor and Hoefler  
**Gift Wrapped** from \$1.69 to \$15.  
Stocking Stuffer Candies, Too!  
Whitman Samplers 25¢

**RADIO'S**  
Pocket Panasonic Portable 10.98  
Hitachi Solid State \$24.95  
Nobility Solid State AM 10.98  
**TAPE RECORDER** 27.95 up

**Billfold** Men's & Ladies \$3.95 to \$15.  
**TIMEX WATCHES** \$6.95 to \$65.

**RAZORS**  
Norelco, Shick, Sunbeam Remington & Famulus For Men & Women  
**5.00 OFF** on any Razor \$17.95 and over with this coupon

We Still Have A Good Selection Of Christmas Decorations & Tree Lights.  
**SANDY REXALL DRUG** 668-4111 and 622-3400  
**HOODLAND PARK PHARMACY**