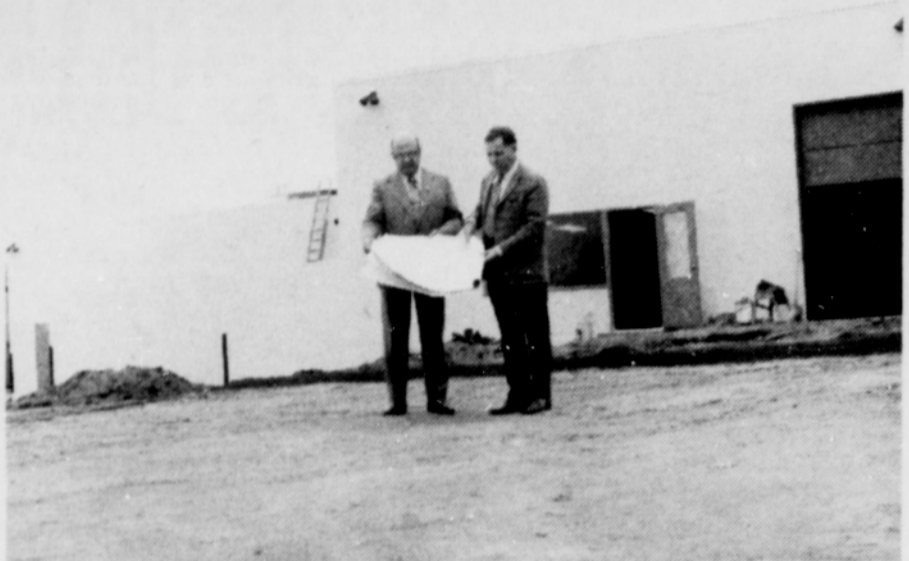


# FANNING CHEVROLET'S CONSTRUCTION SALE



Fanning Chevrolet's new car lot is jammed with shiny new 1972 models. Ross Fanning, Bob Murray, and Dick Hammond say, "Lack of parking space force us to offer the best deals ever on these beauties." See for yourself and drive home a new '72 Chevrolet.



Bob Murray and Ross Fanning (on right) study plans for the nearly completed Body and Paint Shop at Fanning Chevrolet. Construction has robbed them of parking space for beautiful '72 Chevrolets, so they're marking prices way down during this Construction Sale.

## New 1972 Townsman Station Wagon

With tinted glass, door edge guards, power tailgate, 170 HP engine, tilt steering wheel, white tires, radio, luggage carrier.

WAS \$4681.75

NOW **\$3829**

## New '72 Vega 2-door

With tinted glass, 90 H.P. engine, 4 speed transmission, white tires, radio

WAS \$2399.65

Now **\$2189**

## New 1972 Chevelle 4-dr.

V-8, tinted glass, window mouldings, turbo hydromatic, power steering, white tires, wheel covers, radio, vinyl trim . . .

WAS \$3464.70 **\$2991**

## DEMOS '72 Impala Sport Coupe

With door edge guards, remote mirror, 210 H.P. engine, tinted glass, radio, H-D Suspension, Wheel covers, Vinyl Roof, white tires, floor mats.

WAS \$4450.55

NOW **\$3549**

## '72 Kingswood 6 Pass, Wagon

With clock, 170 H.P. engine, power tailgate, tinted glass, radio, wheel covers, wheel opening mouldings, white tires, floor mats.

WAS \$4767.20

NOW **\$3789**

## SPECIAL New 1972 Malibu Sport Coupe

With tinted glass, turbo hydromatic trans., power steering, white tires, radio

Was \$3591.70

NOW **\$3196**

## SPECIAL New 1972 Impala Sport Coupe

With power steering, power disc. brakes, turbohydromatic, white tires . . .

WAS \$4048.90

NOW **\$3329**

## "Put a Little LUV in your life" New 1972 LUV PICKUP

With full factory equipment, including 4 speed transmission . . .

WAS \$2382

NOW **\$2179**

# Fanning

1980 E. Powell



# Chevrolet

Gresham 665-0141