

# Sandy Post

Walter C. Taylor, Lee Irwin, Co. Publishers  
Thomas C. Taylor, Editor

Entered at the Post Office at Sandy, Clackamas County, Oregon, as second class matter under the Act of Congress of March, 1879.  
Member of Oregon Newspaper Publishers Association and National Editorial Association  
Published every Thursday by Outlook Publishing Co., P.O. Box 68, Sandy, Oregon 97055

**SUBSCRIPTION RATES**  
Annual Subscription in Clackamas and Multnomah Counties \$3.50 In United States \$4.50  
Elsewhere in Oregon \$4.00 Servicemen and Women \$3.50

SANDY, OREGON, THURSDAY, JULY 29, 1971

## City Needs City Manager

We feel that maybe it is time for the city of Sandy to look towards hiring a city manager.

With the large amount of development going on in the area now and with that planned for the future, we feel it would be to the city's advantage to have a well trained person in city management on the city payroll. It would be of advantage not only to the city but also for those planning to build in the Sandy area.

The city is in need of a city manager now when it is just starting to feel tremendous growth pains, not later after the growth has already come.

The new city charter which went into effect on July 1 was written to allow the hiring of a city manager.

It is time for the city of Sandy to move into a new era of growth, but let's do it with a well qualified city manager on the city staff helping direct this growth.

The growth of the city of Sandy is at a very important point. The new sewer line and treatment plant are expected to be completed sometime after the first of the year and work has begun to find the solution to getting more water for the city.

Both of these are vital to the future growth of Sandy. For without either one of them the city will find itself unable to grow.

Developments will be forced to be built outside the city limits and to construct their own sewer and water systems if the city is unable to provide these services to them.

We know that the Sandy area is going to grow. Already there are 675 new units proposed inside the city limits waiting approval from the city planning commission. This means the number of housing units in the city could double if all of these were built. Presently there is approximately 700 housing units in the city.

## Mountain Meeting Important

Somehow we got the date for the Let's Get Together meeting mixed up in last week's Post. The meeting is set for this Saturday, July 31, at 3 p.m. at Welches Grade School.

This meeting is important to the people of the Hoodland area. Election procedures to the Hoodland Planning Group (HPG) will be discussed at this meeting.

The work of this local planning group is just beginning now that the

funds are available for the comprehensive plan for the Hoodland area.

The input of the people of the mountain into this plan will mean the success or failure of the plan when it is completed and presented to the county commissioners for approval.

We are sincerely sorry if we caused anyone any inconvenience by stating the wrong date for the meeting last week.



## LETTERS TO THE EDITOR

To the Editor:

May I answer the Clackamas County Park Advisory Board letter written by Eileen Anderson of Rhododendron.

First of all, let's straighten out some facts. Fact No. 1. Commissioner Telford has never from the beginning been in favor of drastically reducing the Park Department Budget. Commissioner Telford did not sign the budget with the large Park Department deduction.

Fact No. 2. The Park Department Budget was reduced from \$167,798 last year to \$86,951 this year, a reduction of \$80,847, not \$100,000 as stated in your letter.

Fact No. 3. The latest State Motor Vehicle Registration figures listed 89,705 passenger vehicles, 33 buses, 4,670 trucks, 1,177 heavy trailers, 4,550 motorcycles and 199 motor homes against which the County share of House Bill 1979 (Increase in Motor Vehicle license fees) could apply. The total of these vehicle registrations (100,334) times \$5.00 per registration amounts to \$501,670.00, additional revenue for Clackamas County for a full twelve month period. Due to the State Pay Plan, only two pay periods will fall within this budget year — so, \$250,835 will be available this fiscal year, not \$240,000 as stated in your letter.

Fact No. 4. Estimated timber receipts from the Mt. Hood National Forest available to Clackamas County for fiscal year 1971 were reduced from \$1,394,174 to \$1,047,880, or a total of \$346,294. The overall County Road fund was reduced from \$3,650,507 last year to \$3,547,000 this year, or a total of \$103,507.

Fact No. 5. The Oregon Constitution, Article IX, Section 3 states that Motor Vehicle License Fees are to be used by the County exclusively for three purposes:

(1) Highway construction, reconstruction, improvement, repairs, maintenance, operation, use and retirement of bonds.

(2) Policing of public highways, roads and streets.

(3) Acquisition, development, maintenance, care and use of parks, recreational, scenic or other historical places, and for the publicizing of the foregoing uses and things.

Fact No. 6. I fail to find any \$16,000 in the Park Department Budget or the County Clerk's Elections Budget for this special election scheduled for August 17th to increase the budget outside the 6 per cent limitation by \$250,000.

From the above stated facts one-third of the estimated additional license fee for fiscal year 1971-72 would amount to \$83,612, or \$2,765 more than the Park Department Budget was cut. Next year the Park Department would receive \$167,223 and this much or more every year thereafter — so why the special election to increase the budget outside the 6 per cent limitation by \$250,000. Money doesn't grow on trees.

From the above stated facts the Road Fund Budget was reduced \$103,507 with all the license fee money included. Take out \$83,612, one-third of

the extra license fees, and the total would be \$187,119 or about 6 per cent. Any well-managed multi-million dollar corporation can cinch up its belt 6 per cent when sales drop and still furnish the same services, or they go broke — but when you have an everlasting check book like the Road Department has, maybe that's asking too much. There is no excuse as I see it for a lousy county road leading to any county park as stated in your letter.

Commissioner Telford will stand up and be counted regarding his objections to the \$250,000 Special Election to increase the budget outside the 6 per cent limitation for the Park Department any time, any place.

Thomas D. Telford  
County Commissioner

To the Editor:

On Saturday, July 24th I rode through the Zig Zag Village development and talked with a gentleman whose name I do not know but he apparently was authorized personnel.

Now in case some of you have not been up the Lolo Pass Road in the Mt. Hood area lately you might be more than a little surprised at the scope of this development. Zig Zag Village will occupy a large acreage on both sides of the highway and is presently installing their water and sewerage systems in a vast maze of ditches, the pipes being laid in sandy soil. There are two fairly large and rather oval shaped pits at the lower right part of the area with a bridge over the dividing land. At the end of this bridge is a cement swimming pool, thirty five feet long, one end of which is designed to be used as a sort of Jacuzzi bath — in other words the water will be swirling.

The man told me the two pits were going to be "reflection" ponds (for pretty, I guess) and both the ponds and the swimming pool would be nourished from their water system. According to him this development is composed of 170 lots — 100 of them to be used for condominiums, 70 for homes. Seventeen lots have been sold to date. Eventually the plans are to house 250 people.

At the present time they are using a well for their water supply but the finished development will use the Zig Zag water system the source being Clear Creek. I asked if there would be a chlorinated reservoir and he said there would be. Then I asked how they planned to dispose of their sewage. He said it would be pumped uphill to an area under the power lines into, first, a holding tank where it would be held for one month then pumped into a second holding tank where it would be held for four months. Somewhere along the line it will go through a chemical treatment plant NOT A TERTIARY. During the winter months, he stated, after the above described process, the sewage will be piped directly into the Sandy River. I said that I didn't see how they could do this as the Sandy River is one of our best fishing streams with steel-heading allowed during the winter below Brightwood. He said he did not consider this a problem because by the time the ef-

fluence had reached that far there could not possibly be any pollution.

At this point I am confused, due no doubt, to the fact that I have never had the "new math". The legal trout fishing season is approximately six months long, from the last part of April to the last part of October, inclusive. Since their holding period is a total of five months does this not mean that there will be one month of the trout fishing season where the sewage from Zig Zag Village will be discharged into the Sandy River? Have the Forest Service and the County issued permits for this procedure? If so, why? Incidentally this facilities project plus finished roads are due for completion in September.

Without a doubt sewerage systems have become a bane to the R & R areas. They are rapidly producing a "tortured" mountain and a good many rebellious and irate citizens.

(Mrs.) M. Kasper  
1725 N.E. 64th Ave.,  
Portland, Oregon

To the Editor:

Last week's Post carried a front page article bemoaning the availability of planning funds for Sandy comprehensive planning needs.

Under the guidance of Clackamas county senators and representatives, a legal planning vehicle now exists in Oregon's laws, should Sandy want to take advantage of it.

In the last session at Salem, H.B. 1603 passed the House and Senate and was signed into law by Governor McCall.

H.B. 1603 allows service districts to be formed, and assessments levied, for the purpose of land use planning. The past law permitted creation of service districts for such things as lighting, sewers, fire, and cemeteries, but not planning.

H.B. 1603 was lobbied for by Hoodlanders for their planning needs, but with county help, that law was not required. If Sandy wants to, it can be the first city in Oregon to use H.B. 1603 to solve its problems by its own actions.

Sincerely,  
Dick Kithil  
Zig Zag

## Letters to the Editor

To the Editor:

Mr. Salazar has his permit from the County Commissioners to build a restaurant near Woodlands Road between Rhody and Zig Zag. However well-intentioned he may be to give the mountain a good restaurant, the location of his site spells financial disaster for him, and a setback for Hoodland planning efforts. Mr. Salazar will not be able to make a go of the restaurant because of its very awkward entry from Highway 26 going eastbound.

People will be past it before they realize the entrance was back at Woodlands Road. Going west bound, the traffic will come upon it suddenly, hesitate and look for a turnaround, then get blinded by the afternoon sun and proceed on to the Zig Zag Inn, the Barlow Trail, or The Inn Between.

The restaurant's location is a set back for Hoodland's planning efforts. Despite the pleas of over 50 local petitioners on 2 petitions, the Oregon Environmental Council, the Portland Girl Scout Chapter, the Hoodland Planning Group, The Rhododendron Improvement Committee, and many private citizens. The County Commissioners overruled their own Planning Commission to grant the OK.

Few Hoodlanders, either as organizations or individuals oppose another mountain eating place. The issue was whether a commercial enterprise should be allowed at that location. Did the County Commissioners really act in the best interests of Hoodland or of

Salazar in this matter? I believe that they did not.

Sincerely,  
Dick Kithil  
Zig Zag

18b  
Petition

## tax increase

(Continued from page 1)

Clackamas County. He said the resolution was necessary to indicate to the state that the county wanted the extra fee collected.

Mrs. Hand said she was not opposing the additional fee but was rather "opposed to earmarking the additional money for roads."

She said she would support the money going to fight pollution and mass transportation.

**T.J.'s**

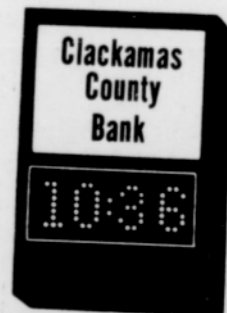
THURSDAY NIGHT SPECIAL  
**Top Sirloin Steak Sandwich**  
**2/\$4**  
**Fresh Halibut Steak**  
**2/\$3**  
Now open 9 a.m. Sundays.  
**T.J.'s**  
**Fireside Dining**

10:36

We Always  
HAVE  
"TIME"  
FOR YOU

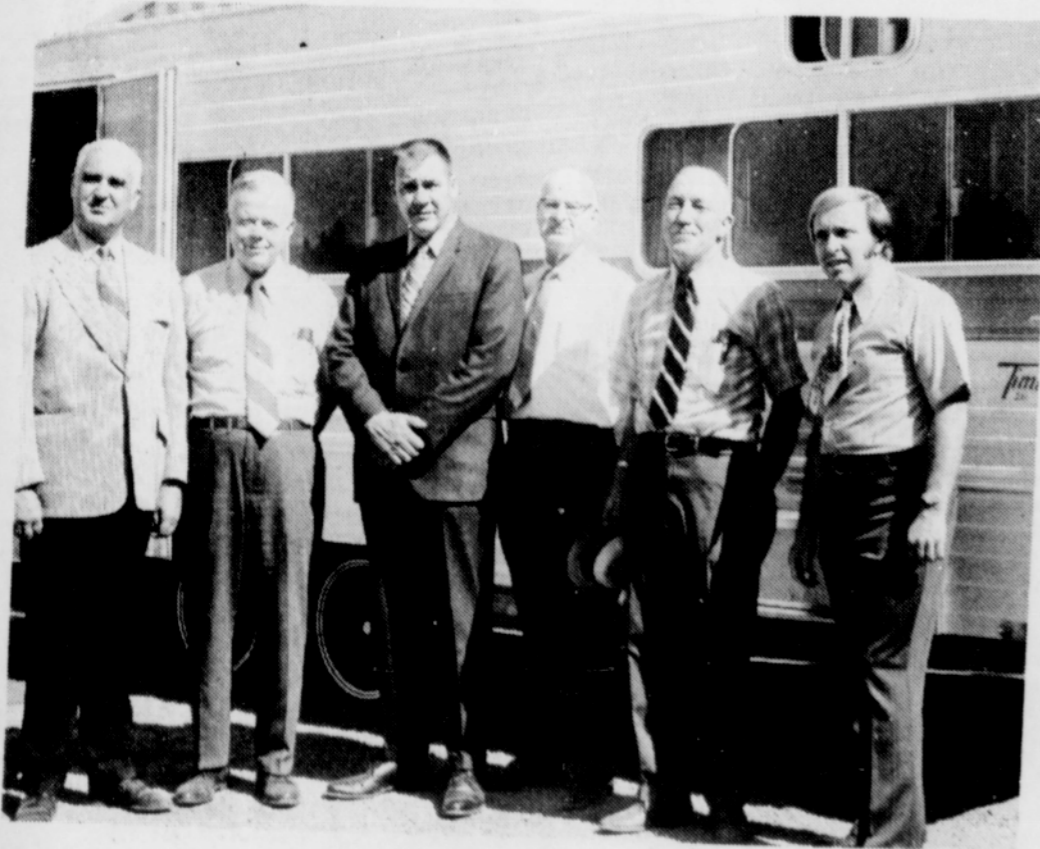


Just as we always have the time and temperature for you . . . you'll find we always have the time to help you or advise you on any financial matter! You'll find too, that any time and every time, you'll receive the same prompt, courteous attention from the friendly folks here! Next time you need information, financing or counseling, stop in . . . you'll be glad you did!



**Clackamas**  
**COUNTY BANK**  
*"Sandy's INDEPENDENT Bank"*

SANDY, OREGON 668-4141  
HOOD-LAND BRANCH, WEMME 622-3131  
Member Federal Deposit Insurance Corporation  
OPEN FRIDAYS 'TIL 6 P.M.



MEMBERS OF THE local community helped in the dedication ceremonies at Timberline Trailers on Sunday. Pictured along with Timberline president Paul Kipers, on the far right, are from left to right, Tony Bryant, Howard Berger, Rev. Jim Davis, Clyde Sutherland, mayor Melvin Haneberg and Kipers.

(Post photo)

## Weather danger to pets

Veterinary doctors in the Portland area reported through the Portland Veterinary Medical Association that they were receiving many calls and office visits because of pets made ill by the high temperatures.

A spokesman for the veterinarians cautioned against leaving pets in closed automobiles, even when a window is left slightly open, or in small unventilated rooms or garages.

In a statement of suggested care for pets seemingly injured from heat, the Portland

Veterinary Medical Association said:

"Most heat injuries are the result of heat stroke. Immediate treatment is to lower the pet's temperature by use of cool baths or cool wet soak towels. If the pet seems to be comatose, call your veterinarian immediately.

"Increased fluid intake and ice cubes to lick are means of preventing the problem from occurring. Keep the pet out of unventilated small rooms or closed automobiles.

"Since dogs and cats do not

sweat, salt losses are not a major problem."

## Damascus calls bids

Bid will be opened Aug. 10 at 8 p.m. for construction of additions to the Damascus school. The project includes a library and five classrooms, three which will not be completed immediately.

The project will be paid for from the \$150,000 bond issue approved by voters in the district July 19.