

Firestone FARMER DAYS

MAY 21-22-23
THURSDAY-FRIDAY-SATURDAY

HECK HARPER WIN A LIVE HOG!

"WEIGH MASTER"

Here
SATURDAY
COME IN AND VISIT
WITH HECK

JOIN THE
FUN!
COME ON
IN!



Guess the weight
of our hog.
Nearest guess wins!

TRY
YOUR
SKILL!

Everyone
can enter...
no cost
or obligation.
Void where prohibited by law

Photo by
Joe Munroe
Courtesy The
FARM QUARTERLY
Magazine

Join
the Fun!

FREE

COFFEE and
DONUTS...
GIFTS for ALL!

(No cost or obligation)



TWO GALLON
GAS CAN
for MOTORISTS,
SPORTSMEN,
HOMEOWNERS

99¢

LIMIT ONE
ADDITIONAL \$1.69

- Flip-top plastic vent
- Self-storing flexible spout



The "Greatest Traction on Earth" tire
with 23° BAR ANGLE TREAD...

Firestone FIELD & ROAD

SIZE 13.6-28, 4-PLY

SIZE 15.5-38, 6-PLY

\$59.70 **\$99.70**

Plus \$5.03
F.E.T. and
exchange
tire

Plus \$7.70
F.E.T. and
exchange
tire

- Delivers up to 16% more traction than 45° bar angle tires.
- Saves on fuel costs and time by plowing more acres in less time than 45° bar angle tires.
- Gives double-life on hard surface roads.

Field & Road - Firestone TR

ALL SIZES VALUE-PRICED

A Big Value!



**20-10-5
LAWN FOOD**

contains white...
a nitrogen ingredient

\$1.99

With these
big pluses

- 5,000 square feet coverage
- Feeds grass for months

Each Limit 2
Additional
bags \$2.99
Net wt. 22 Lbs.

DUAL-UP!...
Hurry! Get Our
**LOW COMPLETE
ASSEMBLY PRICE**
On Your Size... Now!

Dual tractor tire application will give you unbelievable results...REDUCES SOIL COMPACTION, DOES MORE ON LESS FUEL, MINIMIZES WHEEL SLIP, SPEEDS UP FIELD WORK, GIVES TOP FLOTATION!

DON'T MISS OUR
DUAL OFFER!

EASY TERMS!
...with approved
credit

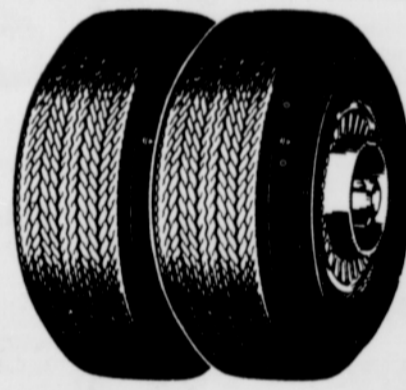


The year's best car tire value

2 for \$19.70 ANY
SIZE
13" BLACKWALLS

Plus 37¢ to 43¢ per tire Fed. excise tax (depending on size) and two recappable trade-in tires off your car.

Firestone DLC-100® NEW TREADS
RETREADS ON SOUND TIRE BODIES OR ON YOUR OWN TIRES
ALL SIZES LOW PRICED



BIG TIRE VALUE FOR FARM TRUCKS, PICKUPS AND VANS!

Heavy duty, 6-ply nylon cord body

Firestone TRANSPORT® **\$23.40**

Pick-up, van and camper all-wheel truck tire with famous traction Gear-Grip tread. Made with long-mileage Sup-R-Tur® rubber and Shock-Fortified nylon cord body.

Plus \$2.40 Fed. Excise
Tax and exchange
LOW... CAR TIRE PRICED



SPECIALS!

Take-offs, trade-ins,
old-style tread designs!
TRUCK TIRES

PASSENGER TIRES

Hurry...limited
quantities!

FACTORY
BLEMISHED

DELUXE
CHAMPION
SUP-R-BELT

GLASS BELTED

Slight appearance
blemishes do not
affect wear or
performance in
any way.

**30%
OFF**

price of similar
tires if first quality.



CLOSE-OUT DISCONTINUED DESIGN

Firestone "500" Tire

\$22.13

as low as

as **\$14.95**

Plus \$1.65 F.E.T. and your tire
Whitewalls slightly higher

SIZE	TUBELESS BLACKWALLS		Your Price	Ex. Tax
	Reg.	Exch.		
6.50-13	\$29.50		\$22.13	\$1.78
7.35-14	32.50		24.38	2.04
7.35-15			24.38	2.08
7.75-14	34.50		25.88	2.17
7.75-15			25.88	2.19
8.25-14	37.75		28.32	2.33
8.25-15			28.32	2.36
8.55-14	41.50		31.13	2.53
8.55-15			31.13	2.57
8.85-14	46.25		34.69	2.84
8.85-15			34.69	2.76

All prices PLUS taxes and tire off your car.

LOW PRICES ON

Firestone CHAMPION®

Full 4-ply nylon cord replacement tire

\$9.95

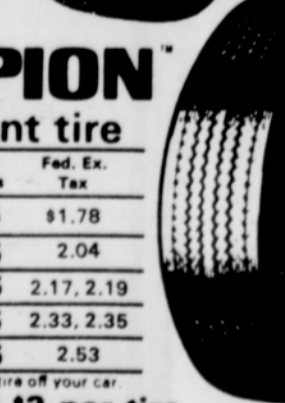
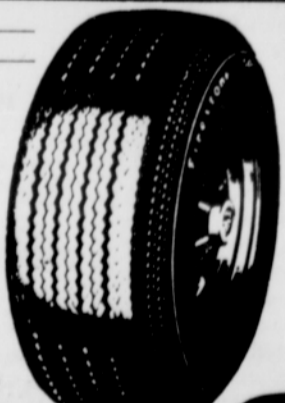
as low as

as **\$14.95**

5.60-15 for VW's **\$14.95** Plus \$1.75 F.E.T.

Size	Tubeless Blackwalls	Fed. Ex. Tax
6.50-13	\$10.45	\$1.78
7.35-14	14.95	2.04
7.75-14, 15	15.95	2.17, 2.19
8.25-14, 8.15-15	17.95	2.33, 2.35
8.55-14, 8.45-15	19.95	2.53

All prices plus taxes and tire off your car.
Whitewalls add \$3 per tire



TRACTOR OWNERS!
We're Firestone equipped
for **IN-THE-FIELD** service



Our up-to-date Firestone farm service truck delivers fast on-the-spot tire repairs, replacements and expert Hydro-Flation... when and where you need it.
... JUST CALL US!

Bridgeport
**AIR/LIQUID
TIRE
GAUGE**

Precision instrument individually packaged, with instructions... only

99¢



ERNIE BEERS

12 Mile
Tire Center 665-3184

Sandy
668-6833 Tire Center

**CALL US...
FOR FAST, EFFICIENT
TIRE SERVICE**