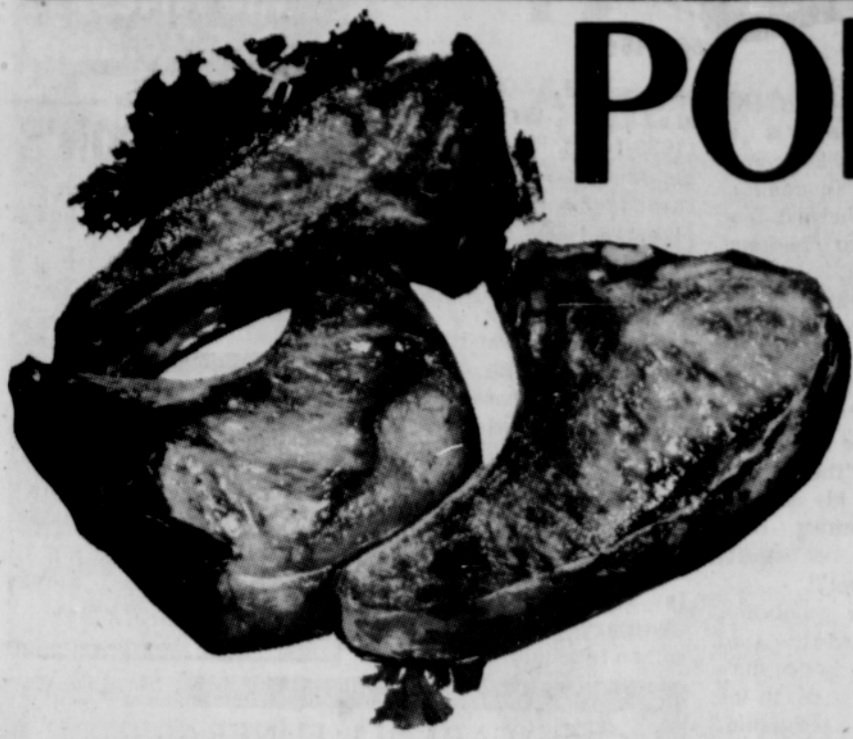


# THRIFTWAY MEANS FINER FOODS, BIGGER SAVINGS

## PORK CHOPS



THICK, MEATY  
CENTER CUTS

Lb.

# 89¢

**PORK CHOPS**  
"FAMILY PACK"  
(END CUTS) lb **79¢**

**PORK CHOPS**  
CENTER LOIN  
CUTS lb **98¢**

**PORK ROAST**  
LOIN END  
3-lb. AVG. lb **79¢**

FRESH, COUNTRY STYLE  
**SPARERIBS** . . . . . lb **79¢**

COUNTRY STYLE  
**PORK SAUSAGE** . . . . . lb **59¢**

ARMOUR STAR  
**SMOKEES** . . . . . BREAKFAST SAUSAGE 12-oz. Pkg. **69¢**

OSCAR MAYER  
**LUNCH MEATS** . . . . . VARIETY PACK 12-oz. Pkg. **98¢**

FRESH, SILVER  
**SALMON** . . . . . HALF or WHOLE lb **89¢**

PRE-COOKED  
**FRYERS** . . . . . READY-TO-EAT—  
JUST HEAT AND SERVE! lb **89¢**



## PICNICS

Del Monte  
Deep-Smoked  
LB. **43¢** Pre-Sli.  
& Tied  
lb **47¢**

BANDON, MEDIUM  
**CHEDDAR CHEESE**  
FROM PASTEURIZED MILK  
2-lb. LOAF

**\$1.39**

ALL PURPOSE  
**CROWN FLOUR**  
BLEACHED OR UNBLEACHED  
FIRST 10-lb. BAG

**79¢**

PACIFIC PEARL  
**TINY SHRIMP**  
FIRST THREE  
4½-oz. TINS

**3 FOR \$1**

MORTON'S FROZEN  
**MEAT PIES**  
CHICKEN, BEEF OR TURKEY  
FIRST FIVE — EACH

**15¢**

COMET  
**CLEANSER** . . . . . FIRST THREE 14-oz. TINS ea **10¢**

FRESH  
**YOGURT** . . . . . ASSORTED FLAVORS 8-oz. Ctns. **4** **\$1**

SNACK  
**CRACKERS** . . . . . NABISCO Reg. 45c **39¢**

NALLEY'S  
**CORN CHIPS** . . . . . **44¢**

  
**CREST**  
REGULAR or MINT  
Reg. \$1.05  
TUBE **59¢**

SWIFT'S  
**"PREM"** . . . . . SWIFT'S VIENNA  
12-oz. "EZ Open" Tin **59¢** . . . . . **SAUSAGE**  
**4** 4-oz. Tins **\$1**

U. S. No. 1  
**Potatoes**  
10-LB. BAG **39¢**

  
LOCAL GRAVENSTEIN  
**APPLES** lb **10¢**

 Fresh Hawaiian Pineapple EACH **39¢**

Papayas Fresh Hawaiian EACH **39¢**

Honeydew Melons lb. **10¢**

Tomatoes Large Slicing lb. **19¢**

Blue Lake Green Beans lb. **19¢**

**WILLIAMS**  
SANDY, OREGON MEMBER OF UNITED GROCERS  
**THRIFTWAY**