

THE Sandy Post



Walter C. Taylor, Lee Irwin, Co. Publishers
Elizabeth Hartman, Editor

Entered at the Post Office at Sandy, Clackamas County, Oregon, as second class matter under the Act of Congress of March, 1879.

Member of Oregon Newspaper Publishers Association and National Editorial Association
Published every Thursday by Outlook Publishing Co., P.O. Box 68, Sandy, Oregon 97055

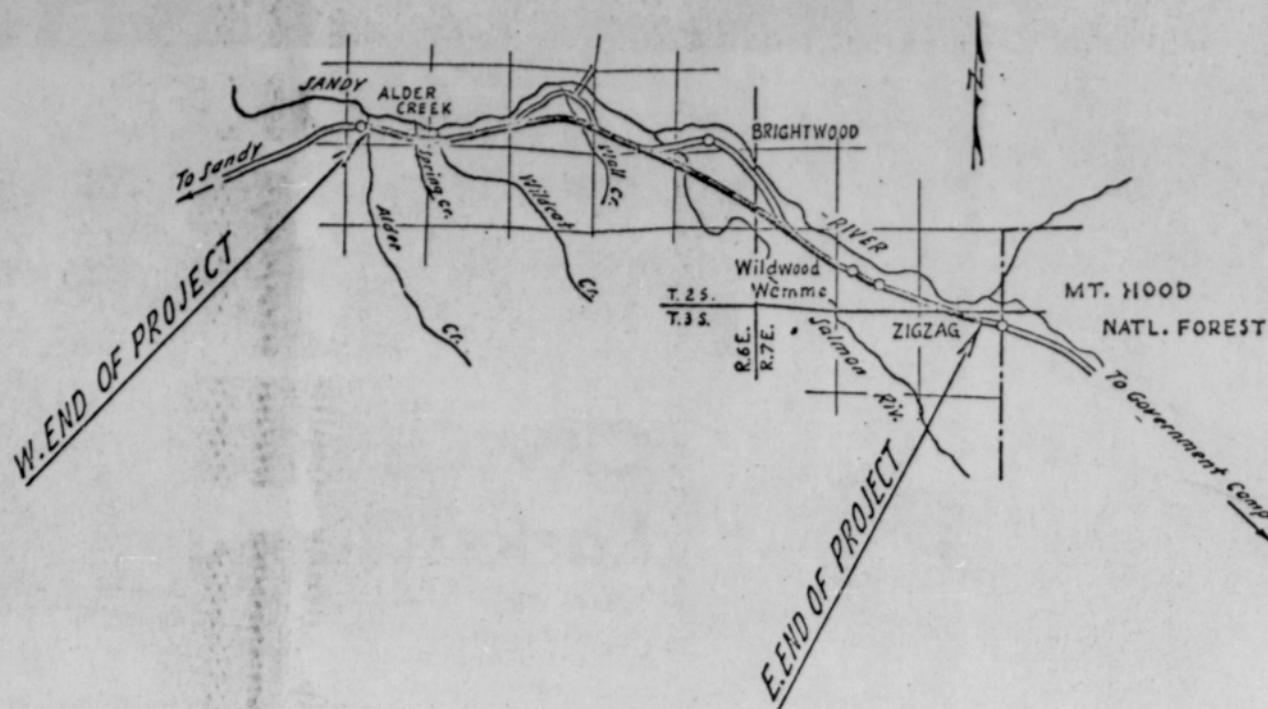
SUBSCRIPTION RATES

Annual Subscription in Clackamas and Multnomah Counties Elsewhere in Oregon	\$3.50	In United States Servicemen and Women	\$4.50
	\$4.00		\$3.50

Page 2

Sandy Post, Sandy, Oregon

July 31, 1969



PROPOSED ROUTING OF Alder Creek-Forest Boundary section of Mt. Hood Highway is shown in shaded section of map. New road will generally follow

present road except for a deviation at Brightwood. Plans call for four lanes (two on each side) with variable median.

Hood River and the Community College

Mt. Hood Community College is taking strictly a "hands-off" policy as far as annexation of Hood River county is concerned.

Current proposals to annex the balance of Hood River county (Cascade Locks already is in the Mt. Hood district) originate strictly in Hood River. The college has done no proselyting.

The problem, very simply, is that annexation of Hood River county would probably preclude formation of a mid-Columbia district. Too little would be left.

Such a district was proposed in the past but was turned down by the

voters. The State Dept. of Education feels another try should be made. Annexation of Hood River to Mt. Hood might work, but The Dalles and Wasco county are something else again.

MHCC Pres. Earl Klapstein probably will suggest that his board table the matter, pending something more definite from proponents of a mid-Columbia district. If they try again, and fail, then Mt. Hood probably should step into the picture.

But in the meantime, Hood River and The Dalles should be given every opportunity to get a college of their own.

We Like Our Weather

Hasn't this been a lovely summer!

Outside a little extra rain early in July, this has been one of those summers you dream about. It hasn't been too hot—just a little rain here and there. And it hasn't been too cold—temperatures have been just about right all the time.

Hopefully, we'll have at least two more months of this kind of weather.

Several weeks ago we went out after church and picked some raspberries for a special Sunday party. While picking, we got to thinking...isn't this a great

country in which to live?

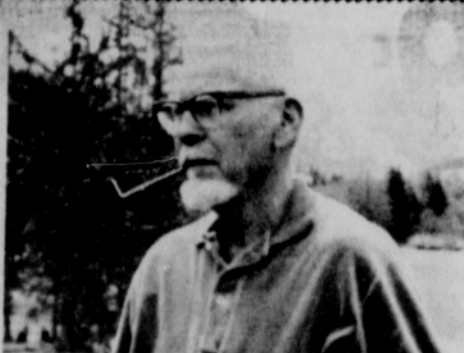
Within a few miles we have the mountains, the river and beaches, lakes and streams. We have equitable weather just about all year round.

Furthermore, we think this is a great place to raise a family. We're close to a big city, yet without big city stresses and strains. The opportunities for work, in the berry fields, for instance, are such that most any youngster can make some money.

We're glad we came.

AS I SEE IT

BY BOB KAYE



There is an ambiguity about the atmospheric carbon dioxide situation as finally published in my last article. I wished to say that the percentage of carbon dioxide was increasing at the rate of 0.1% of total atmosphere per year. That when it had increased to 3.0% of such total above present levels, the "greenhouse effect" would begin to come about.

Thus, if present trends continue unchanged, the polar ice caps could be expected to melt by the year 2000. Of course, any increase in present rates of carbon dioxide production, any improvement in smog conditions in our cities, or any further destruction of vegetation that might occur meanwhile, will hasten the process.

Incidentally, some new estimates of the increase in the consumption of energy in the United States during the next decade have come to my attention in the last few days. Comparing the total energy requirements for the next ten years with that for the last 15 year period the ratio would be 175 to 100 units. Industrial and commercial use will increase 40%; Utilities will increase almost 300%; Transportation will nearly double; and residential requirements will be up about 30%.

Expressing these estimates in terms of fuel that will have to be burned or atomic power used, we would have the following increases over present levels: two-thirds more oil twice, as much natural gas, one-third more coal, double the water power (if we can find it), and nuclear power up from very little now to an amount about equal to one-fifth of the total energy consumed by the nation in 1955. Bear in mind

that these figures are not for 1980 but are in terms of an average total over the next ten years. It is pretty easy to see that heat pollution and carbon dioxide production per year is going to increase at geometrical rates from now on.

I also want to make it crystal clear that air pollution, as commonly discussed, could be completely eliminated without affecting the carbon dioxide problem at all. There is absolutely no way to stop this without ceasing to burn any type of fuel that contains carbon, or even breathing for that matter.

To give an idea of the kind of thing we are up against, I read that a Dr. Philip Leighton, Professor of Chemistry, Emeritus, of Stanford has calculated that a single typical automobile in this country today consumes well over a thousand times as much oxygen as does a person. A corresponding amount of carbon dioxide is produced thereby. Dr. Leighton goes on to conclude that "To carry off the exhaust gases, and dilute them to harmless concentrations, requires from five to ten million times as much air as does the driver." This is like saying that a single horsepower going on the freeway is fouling up more air than would be used up by all the people in the Northwest in breathing for the same period. I have not seen the doctor's original report nor have I checked his figures, but the air consumption of car versus human should not be too difficult to work out. Even assuming an error of ten in the decimal shows the magnitude of the problem.

There are other "straws in the wind." The depth of the glacier ice on top of Mt. Hood is only about a third of what it

was fifty years ago. Species of fish that used never to be found north of about San Diego on the California coast are now being taken off Oregon. Birds and animals that were previously found only below the Mason-Dixon line are now being seen in the Middle West. Of course, it has been known for years that the Northern Hemisphere is gradually warming up and this may be due to other unknown factors, but gradually increasing carbon dioxide in the atmosphere may well play it's part. All the principal industrial nations lie north of the equator.

I do not enjoy the role of Cassandra, but I feel that the people as a whole should know much more than they seemingly do about the problems of the future. I think it is absolutely fatuous for our leaders to be talking as though we could blandly assume that things could go on as they are indefinitely and that we can make all our problems disappear by simply ignoring them.

TO THE EDITOR

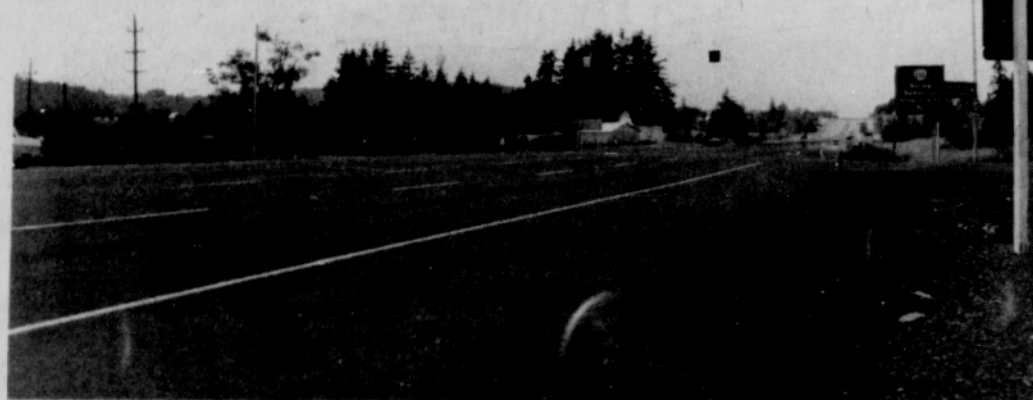
Aug. 6, 1969

To the Editor:

The Sandy Area Boys Baseball Assn. would like to thank the many people who worked so hard on the district tournament this past weekend to make it a big success.

Our special thanks to the Sandy Lions Club for the use of their refreshment stand and to the Lions who helped us in the operation of it, the Sandy Police Reserve for their patrolling of the grounds, and Bob Williams of Thriftway.

Jim Martin, president
Sandy Area Boys Baseball



YELLOW CAUTION LIGHTS were installed this week at intersection of Boring Rd (Ore. 212) and Mt. Hood Highway (US 26) near Heidi's. Dangerous crossing has been scene of many recent traffic fatalities and protests made by irate citizens to Governor McCall and State Highway Commission spurred installation of caution signals. (Post photo)

Sandy Action - - -

(Continued from page 1)

delegated to Regional offices throughout the United States.

The Western Regional office is located in San Francisco and is the Federal OEO headquarters for the Western states, Alaska and Hawaii. Most states have some type of OEO function within the state administration. In Oregon there is a division within the Governors Human Resources Department that is primarily concerned with coordination of and technical assistance to OEO programs.

Most OEO programs are of a national emphasis nature and are administered at a national regional or state level. These programs are exemplified by Job Corps, N.Y.C. (Neighborhood Youth Corps), Upward Bound, VISTA (Volunteers in Service to America) and most Migrant programs.

The CAP or Community Action Program is developed and administered by local people. The CAP has broad and general guidelines from the Federal administration but these do not inhibit local initiative. The Clackamas County Economic Opportunity Authority, Inc. (CCEOA) is a private nonprofit organization designated by the County Commissioners to design and operate the Community Action Program in this county.

The CCEOA Board of Directors consists of twenty-one members. Seven representatives are public officials including the County Commissioners and the administrators of the Welfare, Employment, Health and agricultural Extension departments. There are seven representatives of the poor elected by area councils. The remaining seven members represent other segments of the community and at present, include two businessmen, an attorney, physician, minister, educator, and a labor leader.

This Board determines what programs shall be initiated to attack poverty in Clackamas County. They determine operating and administrative policy and monitor program

operations.

During the current program year the CCEOA is operating four programs: Head Start, Child Day Care, Manpower and Community Organization. Head Start is a program primarily to increase a child's readiness for learning in school. Child Day Care is a program designed to provide free or low cost care and training for the children of low income parents, in order to allow these parents to be employed or trained for employment.

The Manpower program develops jobs for low income people and helps to place them in jobs or in training for employment. The Manpower program works in conjunction and not in competition or duplication of the programs of the Employment Service, Welfare, the Department of Vocational Rehabilitation and the Valley Migrant League.

Community Organization attempts to bring the focus of local resources onto poverty problems. Development and coordination of elements of the community for effective and efficient identification and solution of these problems is a basic responsibility of the Community Action Program. In addition, the organization of low income people into action groups is a learning experience for them and also has the purpose of involving people in the political-economic processes that directly affect their lives.

Within the next several months the Planning Committee of the CCEOA Board of Directors will be visiting localities throughout the county to gather ideas and suggestions. These visits are part of the planning process and are the means by which the Community Action Program is developed in response to expressed local needs. Through this program all people of conscience and good will can work actively toward making their community a good place to live by attacking the blight of poverty.

Mini-skirts once made headlines; at the rate they are going up, they may soon make waistlines.—Raymond C. Davis.

Funds Awarded

Mt. Hood Community College has been awarded a grant of \$5,000 by the Department of Health, Education, and Welfare under Title II-A of the Higher Education Act of 1965.

This grant is awarded under the College Library Resources Program applied for by the college according to Hendrick Sliemers, Director of Library Services.

Dobson Serving With Air Force

Sergeant Stanley E. Dobson, son of Mr. and Mrs. Virgil B. Dobson, Rt. 1, Boring, is serving with his Air Force Reserve unit on two weeks training duty at Hickam AFB, Hawaii.

Sergeant Dobson is an air freight specialist in the 83rd Aerial Port Squadron based at Portland International Airport.

The sergeant, a graduate of Sandy Union High attended Mt. Hood Community College.

CYCOLOGY SEZ

WHEN DAY BREAKS SOME PEOPLE ARE JUST TOO LAZY TO USE THE PIECES

S&H Green Stamps
Clackamas County
Bank Money Orders

Pay Station for
P.G.E.
West Coast Telephone
Northwest Natural Gas

SANDY DRUG
YOUR Retail STORE

668 4111 Sandy Shopping Center

SERVICE WE GIVE!!

INSURANCE WE SELL...

George Morgan
Local Representative

The personal insurance counsel and advice of a local agent is important to you in planning a complete insurance program.

WALRAD INSURANCE AGENCY

Sandy, Oregon 668-4421

You'd Be Surprised at How Many Vacations Begin at Clackamas County Bank

... And yours can be one of them. Let us help with a Vacation Loan, Traveler's Checks, Safe Deposit Box — everything to insure your financial security and the greatest vacation ever. Come in and get full information about our Bank Loan plans now.

Clackamas COUNTY BANK
Sandy's INDEPENDENT Bank

SANDY OREGON 668-4141

HOOD-LAND BRANCH, WEMME 672-3131

Member Federal Deposit Insurance Corporation
OPEN FRIDAYS 'TIL 6 P.M.