

From the River's Edge . .

By **George MacAlevy**

The first fly lines were level. To suit different weights and actions in flyrods these gradually were made in var-

ious diameters. A number of different size designations were used by different manufacturers but eventually the letter designations, used until recently, were adopted early in this century. The highest fly line you could find anywhere was size H. Size G was a few thousandths larger in diameter and so on until you got to Size A, which was about the diameter of a wooden match. Some of the big Salmon Sticks in use in the old days and still in use in the British Isles and Europe required even larger lines and so the 2A and 3A diameters were born.

When dry flies came into existence it was soon noted that

to taper a leader from the huge line diameter to a fine tippet required either a leader too long to handle or too great a size difference between sections. Some canny Scot also noticed that the heavy line did him only harm on a short cast as the line hit the water with so much bulk and commotion it put the fish down. The first tapered fly line undoubtedly was born on a stream when some angler spliced a lighter piece of line on the end of his heavier line for fishing a small stream.

The very first tapered lines were made by splicing level sections together in ascending sizes until you reached the heavy size that fit the rod best for long powerful casts. The whole idea of the heavy line was to provide enough weight beyond the rod tip to load up the rod on the back cast so the angler had the speed and power of the rods flexing action helping to throw the line forward. If your line is too light, it cannot pull the tip back far enough to load the rod and the length and straightness of your cast suffers.

Once tapered fly lines were demanded by anglers in enough quantity, line makers revised their braiding machines so that threads could be added at any desired interval and a smooth gradual taper could be obtained. Once you tapered up to the desired "belly" diameter you continued with that diameter until the 25-yard length was obtained. This was a single tapered line.

Users of level lines had long been swapping ends of the line on the reel when one end became worn and frayed or chipped. The next (and what could be more natural?) change or advancement was the double tapered line in which both ends of the line, usually 30 or 35 yards long now, tapered from the desired small size up to the heavy midsection. This doubled the life of the line much as in the level line. When one end of the taper was cut off too much or too worn to cast, you reversed the line on the reel and had a brand new tapered end to cast with.

Sometime I - somewhere on a very windy day, a fly fisherman was having trouble getting his fly out beyond the end of his line as the long taper on his line was falling back instead of falling forward of the heavy action of the line. By cutting off a portion of the taper and retying his leader to this shorter taper, he got more weight close to the fly and was able to present a better cast into the wind. Now he was putting more heavy belly into the air, and he had to work harder to drive it out in the teeth of the wind. Why, he reasoned, should I have to throw all that weight over and above what I need to load the rod?

So, this angler went home and started splicing. He stepped up size by size in a short taper from an H tip to a B diameter belly about 25 feet long, then using slightly longer lengths, tapered back down, step by step, a size at a time to a G section which comprised the balance of his line. Thus the first weight forward or "Torpedo Head" line was born.

I purchased my first weight forward line in 1938, to match a light weight Jay Harvey seven-foot rod. It was a Hedge taper and had a few extra feet not found on any other manufacturer's lines. By standard nomenclature of the time it would have been called an ICF. This line had five feet of I at the tip, then tapered rapidly to a short "C" "belly" or "head" section. It then tapered back down slowly to an F diameter which was denser and reinforced with extra fibers to give greater wear, as when using this line, the head section was all out of the guides in the air and the line you handled and worked with was the "F" section. I lost this line to dry rot after a few years' use.

Quite a few of these Torpedo head lines, as they were primarily known at that time, were put out by all the line manufacturers in the late thirties. All these early numbers were of silk. It is still possible to get these in silk but they are imported. I know of no domestic manufacture of silk fly lines today. After the war, these Torpedo Heads, three diameter lines, weight forward lines, or by whatever name the manufacturers called them, were readily available in Nylon. Today they are available in Hollow Nylon for floating use and in Dacron for fast sinking. Sink Tip versions are also available.

These lines with these long heavy heads are primarily distance lines. The Bass Bug enthusiasts found them more to their liking than any previous type because the heavy head helped overcome the wind resistance of the bug, but still it left something to be desired. So the special Bug Taper came into being. It differed from the Torpedo head in that both tapers were short and fast and the heavy diameter "belly" was also considerably shorter. One manufacturer who made a "bug taper" made the "belly" section of it twelve feet shorter than the "belly" section of his standard "weight forward" line.

With the advent of spinning tackle and its extreme popularity in the early fifties, a demand arose for a heavy but short fly line head to be used to shoot the line from a spinning reel with conventional dry fly terminal tackle, thus eliminating the plastic bubble usually used to carry the fly out. Some of these were manufactured as short as fourteen feet, and others went up to thirty feet. Nowadays, many users of both fly and spinning tackle buy "shooting heads" only and back them with monofilament. This is a favorite line for Steelhead fly men on big water where most casts are long.

With the "shooting" head, you work the head out of the guides by false casting, and then shoot the balance of your cast by using the double haul to completely load up your rod. Then, let 'er go! This will really peel out all the mono you have stripped from your reel in one motion.

MHCC Runners Place Third In Nationals

Mt. Hood Community College cross country runners took third place Saturday in the national championships for junior colleges at Lawrence, Kans.

First place was won by Cobleskill Agricultural and Technical College of New York, and second place by Haskell Institute, Lawrence, Kans., host of the meet.

There were 30 teams in competition and a field of 178 runners.

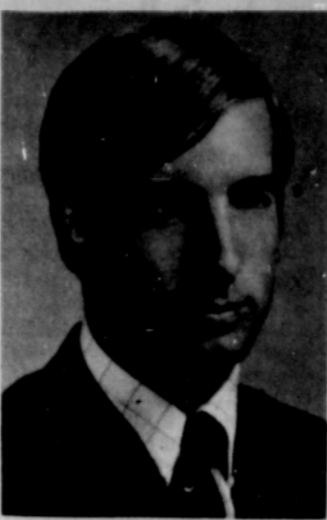
Dan O'Connell was top finisher for Mt. Hood, placing 12, and Denny Behunin placed 24th.

Gehrke Trains

Private Robert G. Gehrke, 18, son of Mr. and Mrs. Robert V. Gehrke, Rt. 3, Gresham, completed a helicopter repair course Oct. 28 at the Army Transportation School, Ft. Eustis, Va.

During the 11-week course, he was instructed in the maintenance of the single-rotor, turbine-powered UH-1D utility helicopter.

National Roster Lists Devecka



Named in this year's national listing of America's most outstanding university and college students is Michael A. Devecka.

Devecka, son of Mr. and Mrs. William M. Devecka of Government Camp.

His name is included in the 1968-69 edition of Who's Who Among Students in American Universities and Colleges, a listing of the campus leaders from more than 1,000 of the nation's institutions of higher learning.

The annual directory of distinguished students has been published since 1934 and carries only the names of students whose academic standing, service to the community, leadership in extracurricular activities and future potential are decidedly above average. Devecka is currently a senior majoring in History at Fort Lewis College, in Durango, Colorado.

Bowling News

SANDY LUTHERAN LEAGUE

| | W | L |
|-------------------|--------|--------|
| Cotten-Picken-429 | 15 | |
| Charles Chimps | 28 | 16 |
| Ken's Kats | 26 1/2 | 17 1/2 |
| Freds Freehold | 24 | 20 |
| RHUM Dumbs | 15 1/2 | 28 1/2 |
| Jim's Crickets | 9 | 35 |

High individual game and series, scratch -- women, Cleo Gagner, 165 and Doris Lutz, 445. Men -- Charles Lutz, 183 and 479.

High team game and series with handicap -- Charles Chimps, 721 and 1995.

SANDY MIXED DOUBLES

| | W | L |
|------------------|--------|--------|
| Pioneer R.E. | 32 | 12 |
| San Ro Esta Lns. | 24 1/2 | 19 1/2 |
| Heldi's | 23 | 21 |
| Brooks Cafe | 21 | 23 |
| McKinnon Ent. | 20 | 24 |
| J.J. Walker | 19 1/2 | 24 1/2 |
| Paul's Welding | 19 | 25 |
| Sandy Cycle C. | 17 | 27 |

High series and game, women -- Terri McManus, 505 and 193; Men -- Myron Dale, 547 and 223.

High team series and game -- Heidis, 2212; Sandy Cycle Center, 796.

EARLY BIRDS

| | W | L |
|-------------------------|--------|--------|
| Gene's Market | 30 1/2 | 13 1/2 |
| Swails Plumb. | 27 1/2 | 17 |
| Cedar Plaza | 25 1/2 | 18 1/2 |
| Sandy Lumber & Hardware | 20 1/2 | 23 1/2 |
| San Ro Esta | 20 | 24 |
| Snack Bar | 20 | 24 |
| Lewis Hardware | 20 | 24 |
| Zig Zag Inn | 18 1/2 | 25 1/2 |
| Mt. Hood S. Ct. | 14 | 30 |

High individual game and series -- Marge Thornton, 196 and 493.

High team game and series -- SRE Snack Bar, 697; Cedar Plaza, 1890.

SANDY MEN'S

| | W | L |
|----------------|--------|--------|
| Cedar Plaza | 27 1/2 | 12 1/2 |
| C. City, Bank | 27 | 13 |
| Sandy Ridge M. | 26 | 14 |
| Smith Motors | 25 | 15 |
| Rexall Drug | 22 | 18 |
| McKinnon Ent. | 20 1/2 | 19 1/2 |
| Brooks Cafe | 9 | 37 |
| W. Thriftway | 3 | 37 |

High team series -- McKinnon Ent., 2733; game, Smith Motors, 996.

High individual series and game Bob Pullen, 531 and George Morgan, 238.

MT. HOODERS

| | W | L |
|------------------|--------|--------|
| Whistle Stop | 27 | 17 |
| W. Thriftway | 25 | 19 |
| House of Wong | 24 | 20 |
| Dea's In & Out | 21 1/2 | 22 1/2 |
| J. W. Antiques | 21 1/2 | 22 1/2 |
| Ethel's Bty. Sl. | 21 | 23 |
| Dew Drop Inn | 20 | 24 |
| Pioneer R.E. | 16 | 28 |

High team series and game -- Dea's In & Out, 2644 and Pioneer Real Estate, 927.

High individual game and series -- Jean Pullen, 193 and Fern Hunter, 537.

SAN RO ESTA

| | W | L |
|----------------------|--------|--------|
| Bill's Bright, Store | 29 | 15 |
| Art Erickson T.S. | 27 | 17 |
| Weaver's D, Store | 24 1/2 | 19 1/2 |
| T-J's | 22 | 22 |
| Dover Kennels | 21 | 23 |
| Scott's Bakery | 21 | 23 |
| Edwards Richfield | 20 1/2 | 23 1/2 |
| Burke's Shell, | | |
| Estacada | 11 | 33 |

High individual game and series, scratch -- Marge Thornton, 200 and 520.

High team game and series, handicap -- Brightwood Store, 714 and 1988.

SUNDAY NITE MIXED DOUBLES

| | W | L |
|------------------|--------|--------|
| Pioneer R.E. | 28 | 16 |
| Sandy Post | 26 1/2 | 17 1/2 |
| San Ro Esta Lns. | 25 | 19 |
| Sandy Shell | 18 1/2 | 25 1/2 |
| Richardson | 18 | 26 |
| Team #5 | 16 | 28 |

High individual game and series -- Fern Hunter (sub), 207 and Jo Lewis, 500.

Ron Espersen, 202 and Ralph Sandercock (sub), 523.

High team game and series -- Pioneer Real Estate, 725 and Sandy Shell, 2069.

Reserve Now for **THANKSGIVING DINNER**
11 a.m. till 8 p.m.
Turkey or Ham \$2.00 Dinner
BARLOW TRAIL
ZigZag, Oregon
622-9891

see the **Quasar** by **MOTOROLA**
the all transistor color TV with the works in the drawer
Priced Right
NEIL RIEGELMANN APPLIANCES
50 N.E. 2ND GRESHAM MO 5-4158

THANK YOUR HOSTESS WITH Candy for Thanksgiving
Beautiful selection to choose from . . . Gift wrapped Candy by Rogers, Hoeflers, Saylor, and Whitman
- ALSO - ASSORTED FRESH DOUBLE KK NUTS
Pay Station for P.G.E., West Coast Telephone, Northwest Natural Gas
S&H Green Stamps—Clackamas Co. Bank Money Orders
SANDY DRUG
"YOUR Rexall STORE"
Phone 668-4111 • SANDY SHOPPING CENTER

PAINTED WAGON Country Store
—Specials—
Delicious or Spitzenburg **3.79** bushel
WALNUTS 40c lb.
Delicious Health Breads and Meat Substitutes
★ OTHER PRODUCE AVAILABLE
(Formerly Ice Cap Grocery)
1 1/2 Miles East of Sandy on U.S. Hwy. 26

Thanksgiving Special
Pull and Clean Oven
RDG 35-1
Neil **Only \$232⁵⁰**
NEIL RIEGELMANN APPLIANCES
50 N.E. 2ND GRESHAM MO 5-4158

UNION PACIFIC RAILROAD
Ship The Strategic Middle Route To and From Eastern Markets
SEATTLE TACOMA PORTLAND BOSTON PHOENIX DENVER CHICAGO
SAN FRANCISCO LOS ANGELES LAS VEGAS SALT LAKE CITY
UNION PACIFIC RAILROAD

Mach 1—a new Mustang on the wild side. In your Eager Beaver Ford Dealer's Performance Corner.
Now—for the Mach 1 Mustang . . . 351-cu. in. V-8 standard. GT handling suspension, low-glare hood and cowl paint, dual racing mirrors, bolted wide-ovals and more—all included. Great options—V-8's up to 428 cubes, front disc brakes, tach, competition suspension. Drive one—at the swiftest Eager Beaver's in the woods.
GLOS FORD
Mt. Hood Hwy. & Ten Eyck Rd. SANDY, OREGON
NEED A GOOD USED CAR? SEE YOUR FORD DEALER—HIS ARE ALL A-1