

# PRE-THANKSGIVING SALE AT THRIFTWAY

PRICES EFFECTIVE  
NOVEMBER 21-22-23

## BEEF POT ROAST

U.S.D.A. CHOICE BLADE CUT



Oregon Grain Fed Beef

Lb. **43<sup>c</sup>**

- BEEF ROAST . . . U.S. CHOICE BONELESS . . . lb. **79c**
- CROSS RIB ROAST . . . . . lb. **89c**
- SWISS STEAK . . . . . ARM CUT . . . lb. **69c**
- CHUCK STEAK . . . . . lb. **53c**
- GROUND BEEF . . . . . lb. **49c**
- BEEF STEW . . . . . BONELESS CUBES . . . lb. **79c**

## BONELESS HAM

DEL MONTE or WESTERN FAMILY



Fully Cooked  
Half or Whole

Lb. **89<sup>c</sup>**

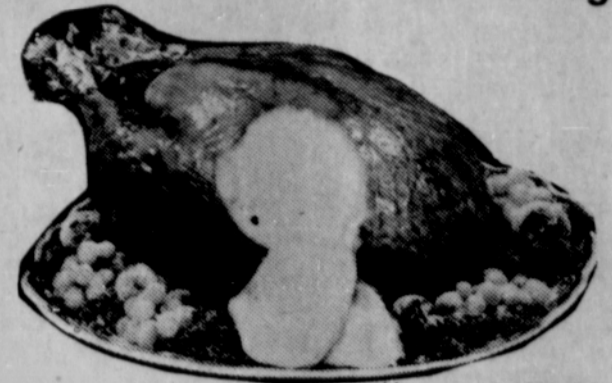
## CANNED HAM

Hormel Fully Cooked

5 lb. tin **\$4.49<sup>c</sup>**

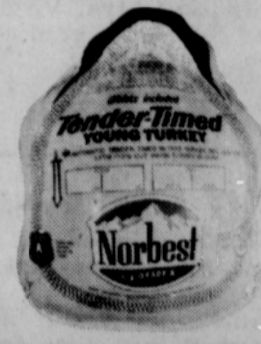
## GRADE "A" TURKEY

PILGRIM TOMS 16 to 24 lb. Average



Fresh Frosted  
FIRST ONE

Lb. **31<sup>c</sup>**



NORBEST TENDER-TIMED

Young 1968 Crop  
**TURKEYS**  
ARE FEATURED AT LOW COMPETITIVE PRICES —  
These succulent broad breasted Premium Turkeys are the best you can buy . . . Try one!

### LOOK AT THESE SUGGESTIONS FOR YOUR THANKSGIVING DINNER

Putnam's Inn  
**COFFEE**  
ALL GRINDS  
2 LB. TIN **\$1.39**  
1-lb. 68c  
3-lb. \$1.99

Early Calif.  
**OLIVES**  
THROW PACK STUFFED  
8-oz. bottle **59<sup>c</sup>**  
A GOOD BUY

Fresh  
**EGG NOG**  
EXTRA RICH  
Quart Ctn. **59<sup>c</sup>**  
GOOD SO MANY WAYS

Birds Eye  
**PEAS**  
FRESH FROZEN  
10-oz. pkg. **14<sup>c</sup>**  
SERVE WITH BUTTER

Sweet  
**Potatoes**  
TAYLORS CANNED  
3 Squat No. 3 tins **\$1<sup>00</sup>**  
HEAT & EAT

U.S. No. 1  
**Red Yams** **10<sup>c</sup>**  
Smooth Skinned LB.

**TANGERINES** **13<sup>c</sup>**  
Zipper-Skin Large Satsumas

**CELERY** . . . . . Large Crisp Stalks . . . . . **19<sup>c</sup>**  
**GRAPEFRUIT** . . . . . TEXAS PINK Sweet and Juicy . . . . . Med. Size **10/89<sup>c</sup>**  
**CRANBERRIES** . . . . . OCEAN SPRAY Plump and Red . . . . . 1-lb. cello bag **29<sup>c</sup>**

OCEAN SPRAY STRAINED OR WHOLE  
**CRANBERRY SAUCE** . . . . . 300 tin **19<sup>c</sup>**  
WESTERN FAMILY  
**MANDARIN ORANGES** . . . . . 11-oz. tin **19<sup>c</sup>**  
FLAV-R-PAC GOLDEN  
**PUMPKIN** . . . . . New Pack . . . . . Large 2 1/2 tin **12<sup>c</sup>**  
Western Family  
**MAYONNAISE** . . . . . First Quart Addl. 39c . . . . . Each **33<sup>c</sup>**  
KRAFT or MAYFLOWER  
**COTTAGE CHEESE** . . . . . Pint Ctn. Ea. **29<sup>c</sup>**  
KRAFT PHILADELPHIA  
**CREAM CHEESE** . . . . . 3 Large 8-oz. pkgs **\$1<sup>00</sup>**  
SOFLIN ASSORTED  
**PAPER NAPKINS** . . . . . 2 60 Ctn. pkgs. **19<sup>c</sup>**

**STUFFING BREAD**  
BUTTER CUP  
Un sliced 1-lb. 6 1/2-oz. Loaf **29<sup>c</sup>**

**COFFEE CAKE**  
BUTTER CUP FRESH  
Resp. Danish Reg. 45c **39<sup>c</sup>**

**POTATO BREAD**  
BUTTERCUP  
With Sesame 1-lb. 6 1/2-oz. **29<sup>c</sup>**

Lou Z Ana Olympia Size  
**Oysters** . . . . . 8-oz. tin **49<sup>c</sup>**  
WESTERN FAMILY  
**Corn** . . . . . New Pack 5 303 tins **\$1<sup>00</sup>**  
Mrs. Smith Frozen Pumpkin or  
**Mince Pies** 26-oz. Pie **49<sup>c</sup>**

Liptin's Onion  
**Soup Mix** 3 2-Env. pkgs. **\$1<sup>00</sup>**  
Sunshine Cookies  
**Hydrox** 2 16-oz. pkgs. **89<sup>c</sup>**  
Nalley's Banquet  
**Dills** . . . . . 22-oz. bottle **45<sup>c</sup>**

**WILLIAMS**  
SANDY OREGON MEMBER OF UNITED GROCERS  
**THRIFTWAY**