

Pioneers Drop Estacada Tilt; Set for Home Game

By Mike Hite

The Sandy Pioneers became quick dropouts from the school of unbeaten football teams, Friday, when they were defeated by the Estacada Rangers 14-6 in the second game of the season for both teams.

Although they hit the scoreboard only once, the Pioneers did show some running class, getting some nice mileage from Jim Sliger, Brent Peterson, Mike Nelson and Roger Williams.

But due to a two-timing pass defense used by Estacada the Pioneers had no other weapon by which to advance the ball for any big chunks of yardage. Sliger, handling the Red and Black marching, was compelled to stick with the ground forces most of the evening.

A Sandy miscue permitted the Rangers first touchdown, as Glen Gamewood fumbled an Estacada punt on his own two-yard line. Seconds later Mike Davenport plunged over from one yard out.

The Pioneers came roaring back as Sliger returned the ensuing kick-off 63 yards to the Estacada 16, coming within one defender of going all the way. Four plays later Sliger took it

in himself from two-feet away. Estacada added an insurance tally early in the third period as Steve Vandenberghe squirted over from the one. This touchdown was set up by Dave Brown to Del Gentemann pass which covered 28 yards.

The defeat was not only tough for coach Ken Brown and his warriors to swallow but proved costly as well as Glen Gamewood Sandy's bruising halfback, was hurt late in the first period and was a disconsolate, sideline spectator for the rest of the evening.

SANDY.....0 6 0 0-- 6
ESTACADA.....7 0 7 0--14
ES--Davenport 1 run, (Coffin kick),
SA -- Sliger 1 run, (kick failed),
ES -- Vandenberghe 1 run, (Coffin kick).

PREDICTION RECORD
4-1 .800

CANBY over MOLALLA -- The Cougars (1-1) looked strong against Wy'east losing only 18-7 and should have the edge over winless Molalla (0-2) who also played well against The Dalles losing 20-0.

THE DALLES over SANDY -- The Indians (1-1) are always tough regardless of their record, but they should have their hands full with this strong Sandy (1-1) team, although upset by Estacada last week 14-6, the Pioneers play their first home game on the new field and it could make a difference.

JESUIT over REYNOLDS -- The Crusaders (2-0) rated 11th in the state should stretch the Lancers (0-2) record to three straight losses. Jesuit powered to 331 yards on the ground

against Silverton last week and could even pile up more against Reynolds.

PARKROSE over WY'EAST-- Here's the number one passing offense in the Broncos (2-0) rated 10th in the state, and a great defensive squad in the Golden Eagles (2-0) both teams unbeaten, both teams looking forward to a great season. The nod goes to Jones and Welch and Co, for what looks like the Wilco league's top game so far.

(Wilco standings here....pick up from Outlook).....

ESTACADA over SILVERTON
The Rangers (1-1) beat Sandy (1-1) again 14-6 in a tough one, but should have an easier time with Silverton (0-2) which only lost to Jesuit 22-0 last week. Good advice to the Ranger is win while you can before you play the powerhouses.

WILCO STANDINGS

W	L	PCT.
Parkrose	2 0	1,000
Wy'east	2 0	1,000
Jesuit	2 0	1,000
Canby	1 1	.500
Estacada	1 1	.500
Sandy	1 1	.500
The Dalles	1 1	.500
Molalla	0 2	.000
Silverton	0 2	.000
Reynolds	0 2	.000

Results Last Week
Parkrose 27, Reynolds 13; Wy'east 18, Canby 7; Jesuit 22, Silverton 0; Estacada 14, Sandy 7; The Dalles 20, Molalla 0.

Games This Week
Jesuit at Parkrose, The Dalles at Sandy, Canby at Molalla, Estacada at Silverton, Parkrose at Wy'east.

Closures Told For Mt. Hood Forest Trails

Closure of several Mt. Hood National Forest trails to motor vehicle use by the public has been announced by Lloyd G. Gillmor, Mt. Hood Forest Supervisor.

Four recently constructed trails are being closed because soil conditions will not support vehicle traffic. The remaining closures are needed to preserve isolation and solitude in areas where these attributes are important.

The following trails are affected: 1) Trails in Multnomah Basin, northeast of Larch mountain, 2) Huckleberry Trail from Lost Lake to the Oregon Skyline Trail, 3) Alder Flat, Riverside and Round Lake trails in the upper Clackamas River drainage, 4) Little Crater Trail adjacent to Little Crater Lake, and 5) Tilly Jane Trail near Cloud Cap.

Closure signs are posted at Trail heads. Lists of the individual trails closed are available at the Mt. Hood Supervisor's Office and at the Ranger Stations.

Service Lines
Army Private CHARLES C. BROOKS, 21, son of Mr. and Mrs. Wayne E. Brooks, Rt. 2, Boring, completed an eight-week field artillery basic course Sept. 7 at Ft. Sill, Okla. During the course, he was trained in the operation and maintenance of the 105mm and the 155mm towed howitzers. He also received specialized training in firing such weapons as the M-60 machine gun, the M-79 grenade launcher and the 3.5-inch rocket launcher.

Gunners Mate Seaman PAUL S. FRANKLIN, USN, son of Mr. and Mrs. Adrian A. Franklin of Route 2, Estacada, Ore., is in the Gulf of Tonkin off the coast of North Vietnam as a crew-member aboard the attack aircraft carrier USS Coral Sea.

This is the third cruise to the combat zone for the 973-foot carrier since 1965 when planes from its flight deck flew the first air strikes against North Vietnam.

During the "Flattop's" last cruise to Southeast Asia, it spent 109 days "on the line" in the Gulf of Tonkin and launched more than 8,000 combat and support sorties over North and South Vietnam.

Before arriving at its combat station, the Coral Sea made port calls in Hawaii, Japan, and the Philippines.

Arrests of juveniles for serious crimes in the U.S. have increased 54% in the last six years.

Bowling News ...

SAN-RO-ESTA

	W	L
Erickson-Fowler	3	1
Washing Well	3	1
Weaver's Dept.	2 1/2	1 1/2
Estacada Golf	2	2
Mt. Hood Log	2	2
Dover Kennels	1 1/2	2 1/2
Zig Zag Inn	1	3
Edwards Richfield	1	3
High game, scratch--Addie Perry, 177.		
High game, handicap--Mary Schmidt, 185.		
High team scratch and handicap -- Erickson-Fowler, 1712 and 1907.		

MT. HOODERS

	W	L
Dew Drop Inn	8	0
Whistle Stop	7	1
Pioneer Real Estate	7	1
House of Wong	5	3
Jennie Welch's Antiques	5	3
Dea's In & Out	-	7
Williams Thriftway	1	7
Ethel's Beauty Shop	0	8
High team, series and game -- House of Wong, 2830 and 959.		
High series -- Lois Leavitt, 513.		
High game -- Carol Cutsforth, 219.		

SANDY BUSINESSMEN

	W	L
Smith Motors	4	0
Glos Ford	4	0
Richardson Chevrolet	4	0
Williams Thriftway	3	1
Cedar Plaza	1	3
Clackamas City Bank	0	4
Sandy Rexall Drug	0	4
Sportsmens Club	0	4
High team, series and game -- Smith Motors, 2571 and 898.		
High series and game -- Butch Esperson, 609 and 226.		

EARLY BIRDS

	W	L
Gene's Market	6	2
Al's Mini Mart	6	2
Cedar Plaza	5	3
Swalls Plumbing	3	5
Betty's Snack Bar	3	5
Lewis Hardware	3	1
Team #7	1	3
Zig Zag Inn	1	7
High individual game and series -- Alice Ackers, 196 and Lois Leavitt, 504.		
High team game and series -- Betty's Snack Bar, 647 and 1805.		

TRIM TRIO

	W	L
Mt. Electronics	2	2
Team 5	2	2
Team 4	2	2
Sandy Post	2	2
Tiki Printing	Await Final	
Team 2	handicap	
High team game and series, Team 2, 451 and 1274.		
High individual series, scratch Viv White, 496.		
High individual game -- Betty Hartman, 179.		

SUNDAY NITE MIXED DOUBLES 9-17

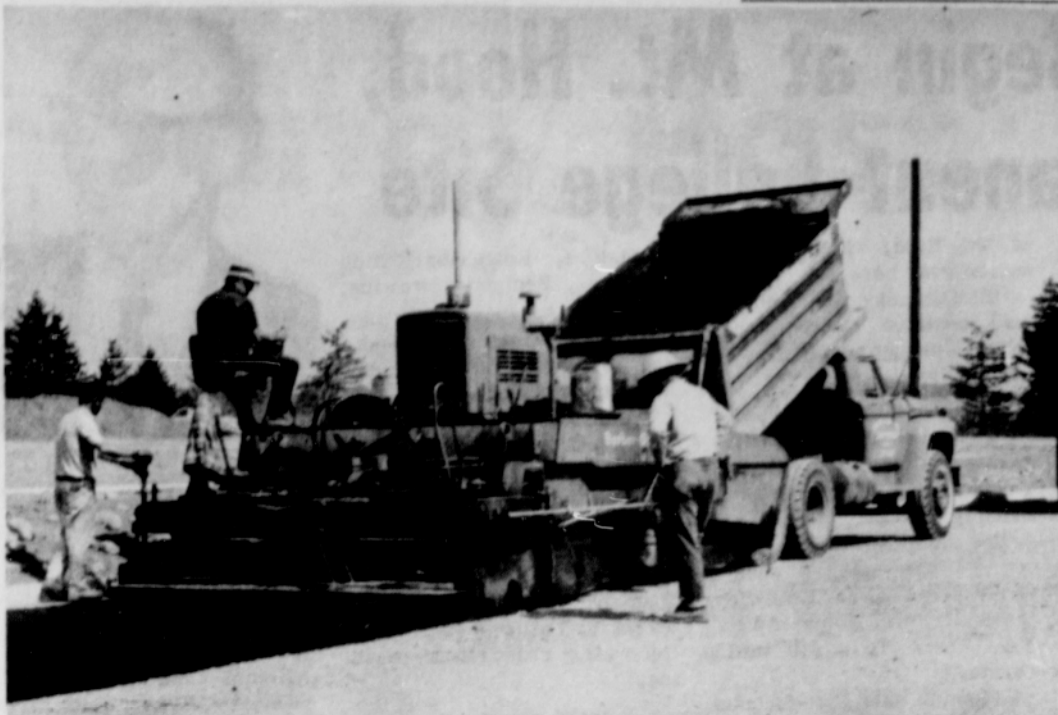
	W	L
Shorty's Corner	8	0
Frederickson's Appl.	5	3
#1	5	3
Sandy Shell	4	4
#6	3	5
Chuck Baker Realty	3	5
San Ro Esta	2	6
#2	2	6
High game and series, women -- Vi Markwell, 189 and 503.		
High game and series, men -- Butch Espersen, 203 and 566.		
High team game and series, handicap -- Fredrickson's, 775 and 2329.		

	W	L
Dew Drop Inn	6	2
San Ro Esta	6	2
McKinmons	6	2
Pioneer	4	4
Sandy Truck	3	5
J. J. Walker	3	5
Brooks Cafe	3	5
Paul's Welding	1	7
High series, women -- Dee Dale, 535.		
High game, women -- Dee Dale, 220.		
High series, men -- Myron Dale, 610.		
High game, men -- Myron Dale, 222.		
High team game and series -- Dew Drop Inn, 800 and 2320.		

OES Meets
Mountain View Chapter #125 Order of the Eastern Star is holding a special meeting on Friday, Sept. 22 at 8 p.m. Mrs. Muriel Field, Grand Conductress of the Grand Chapter of Oregon is making her official visit for the purpose of conducting a School of Instruction. Preceding the meeting a no-host dinner is to be held at T & J Restaurant.

While in Sandy Mrs. Field will be the house guest of Mr. and Mrs. Harry H. Cole. Members are urged to attend this meeting.

Fifteen million fans attended horse racing events in Japan in 1966.



PLENTY of parking will be available at Mt. Hood Community College by the time school begins in two weeks. Here workmen retouch curbs and level the ground for asphalt.

Sandy Mountaineer 1967 Football Schedule

VARSITY -- Fri. Sept. 22--Gresham, here, at 3:30; Wed. Sept. 27--Gardiner (Oregon City), here, at 3:30; Fri. Oct. 6--Rockwood, there, at 3:30; Thurs. Oct. 12--Columbia View, here, at 3:30; Fri. Oct. 27--Ogden (Oregon City), here, at 3:30; Fri. Nov. 3--Orient, here, at 3:30; Wed. Nov. 8--Estacada, there, at 3:30. Weather permitting.

JUNIOR VARSITY--Thurs. Oct. 5--Columbia View, there, at 3:30; Wed. Oct. 11, Gresham, there, at 3:30; Thurs. Oct. 19--Rockwood, here, at 3:30. Weather permitting.

Colors: Blue and gold
Nickname: Mountaineers
Coach: Dave Blount

Ass't. Coach: Wayne Thomas
Principal: Jack Callaghan
Superintendent: Clyde Sutherland.

needy players that could use them. says Coach Dave Blount.

MT. GRANGE - 926

Card Party, Monday, September 25, 1967, at the Mountain Grange Hall on Steep Hollow Road at 7 p.m.. Come and bring your friends. All welcome! 50¢ each player..REFRESHMENTS. Get your foursome together for Pinchle, Bridge or Canasta; or come alone and we will get a foursome for you.

Farm Calendar

Sept. 26-27 -- Forest Resources tour meeting, Camp Colton, 9:30 a.m.
Sept. 26 -- Clackamas County Home Extension unit meeting, Sunnyside, Clackamas.

THIS IS A BIG FISH I CAUGHT WITH A PEECE OF BREAD AND MY DADDY AND BROTHER DID NOT CATCH ANY WITH ALL THESE FLIES AND THINGS AND THEY WERE MAD AND MY DADDY SAID IT IS TOO BAD THEY DONT TELL INSORNC THAT COVERS THESE THINGS AT

MARIE SEEMATTER INSURANCE
107 Shelly 668-4414

NEW 1968 FORDS

See Our New Fords while enjoying a free cup of coffee and doughnuts Friday and Saturday Sept. 22nd & 23rd

WE WILL BE OPEN 'TIL 9 P.M.

Be sure to register for one of the 6000 prizes to be given away

Glos Ford

Loop Highway, Sandy, Oregon 668-4114 or 663-3525

FANCHER'S
AUTO PARTS and Machine Shop Service
311 E. Proctor 668-4444

SANDY SAW SHOP
Quality Reasonable Work
Repair and Sharpen Saws, Chain Saws, Knives and Scissors. We Make Keys. Phone 668-6114
1/2 Mile E. Sandy on Hwy. 26

NEW Toni HAIRCOLORING
-FASTER...10 MINUTE TIMING
-SPECIAL CREME CONDITIONER
-SHAMPOO EASY--WON'T WASH OUT

ONLY \$2.25

S & H Green Stamps - Clackamas County Bank Money Orders

SANDY DRUG
"YOUR Rexall STORE"
Phone 668-4111 • SANDY SHOPPING CENTER

SERVICE WE GIVE!!
INSURANCE WE SELL . . .

George Morgan Local Representative

The personal insurance counsel and advice of a local agent is important to you in planning a complete insurance program.

WALRAD INSURANCE AGENCY
Sandy, Oregon 668-4421

A THOUGHT FOR THE WEEK

by KEN BATEMAN

Is it always true that "seeing is believing"? Indeed not. Distortions can occur, disbelief follows. Some distortions are instantly detected. Some are not. For example, when you stand in front of a distortion mirror in an amusement park, you see an immediate distortion. When a tube goes bad, you can get a distorted picture on your TV screen.

There are other forms of distortion. Moral standards can cause distorted money values. And conversely, money can cause distorted moral standards. Public opinion can be affected by distortion. This is why the FDA, FTC and FCC were formed to protect the public. Even so, distortions continue and often result in inferior merchandise outselling better products. In politics too, unqualified candidates can and do win elections while qualified candidates are defeated by distortion.

The best safeguard against distortion and deception is the use of common sense . . . and common sense CAN crowd out wishful thinking from anybody's thinking box . . .

BATEMAN FUNERAL CHAPEL, 520 W. Powell Blvd., Gresham.

Your daughter spends 5 hours a day in her room



shouldn't she have a phone there?

In fact, shouldn't you have a phone in every important room? Extensions cost less a day than a postage stamp. For your daughter's room, ask us about our STARLITE® phone.

GENERAL TELEPHONE
A Member of the GTE Family of Companies