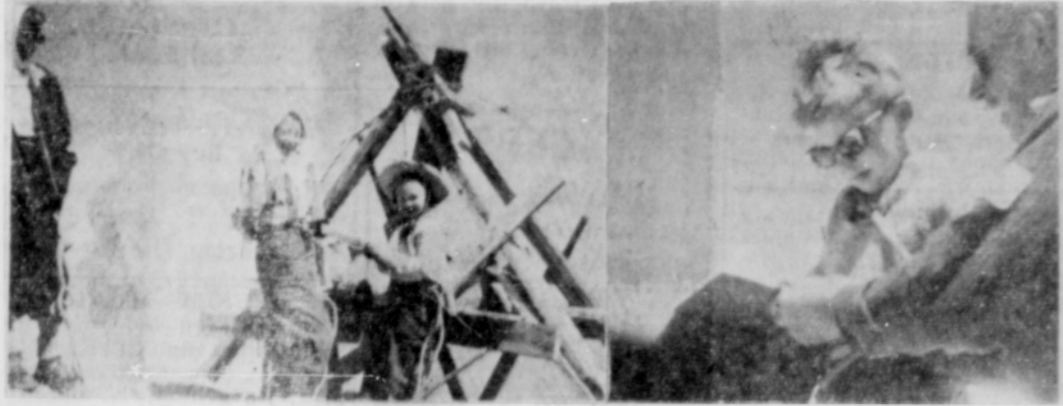


### Tots Climb Mountain



Here are the three Parmeles, who celebrated their eighth or ninth birthdays by climbing to the crest of Mt. Hood. The small figures show Louise and Barbara, with their mother at the far left, on the day eight years ago when little Barbara reached the summit. Louise had made the climb a few years before when she reached the age of nine. The earnest young fellow is Scott who climbed to the top of the mountain two weeks ago to celebrate his ninth birthday. They are children of Mr. and Mrs. Gilbert Parmele, Route 2, Box 657, Sandy. Parmele is an experienced guide on Mt. Hood.

### Jobless Fund State Says Increasing

SALEM—Over the past fiscal year the unemployment benefit Trust Fund increased almost by half, the Department of Employment announced today. At the end of June the monies in the Fund totaled \$38,002,776 compared to \$25,999,934 at the end of June last year. Thirteen percent fewer people made claims against the Fund this year than last and 26 percent fewer checks were issued. Improved economic conditions resulted in shorter periods of unemployment which, when added to higher payrolls and suspension of merit rating with the consequent 2.7 percent base tax, substantially

bolstered the previously declining trust fund. A total of \$23,270,463 was disbursed from July 1 to June 30 this year compared to \$30,276,409 the previous year. Only 9,595 or 15.4 per cent persons who were paid any benefits received all the compensation to which they were entitled this year while similarly exhaustedes totalled the higher 17,935 or 23.6 percent a year ago. The 20 dollars earned in at least 20 weeks provision in the Law passed by the last Legislature made ineligible about seven percent of the valid claimants of a year ago most of whom have had claims of shorter duration.

The new varieties are grown row by row beside the now standard varieties. Differences in plant appearance, berry appearance, and yield are striking. Certain of the new ones show little evidence of breakdown from disease while others look sickly. Marshall variety looks sickly. Marshall plants from growers located in the Klamath Basin, Eastern Oregon and Idaho are also grown side by side. All of them show too much serious virus infection, it appears that the Marshall variety is on the way out.

### NOTES BY THE WAYSIDE

Projects underway on the North Willamette Experiment Station, four miles north of Aurora are quite impressive and well worth seeing. This area is badly in need of a new strawberry variety, one which is resistant to virus, root rots, and fruit rots. An acceptable variety will yield a large per acre tonnage of berries acceptable to the processing trade. The North Willamette Station has a number of new ones fruiting for the first time this year. Some of them have been developed by George Waldo, Oregon State College plant breeder. Others come from Washington and California.

The most promising will be increased and distributed to the public if and when they have been proved better than the commercial varieties now grown here. Several of the new ones are interesting to say the least.

The casual visitors can see little of interest without the services of a guide. For instance, under test are a number of new red raspberry varieties. They don't look too good to the casual observer. The reason is that they have been heavily disturbed by plant taking. Next year all of these new ones will be found growing under field conditions. New high yielding and commercially acceptable red raspberry varieties are badly needed also.

Chemical weed control experiments in strawberry plantings are quite extensive and impressive also. Certain of these were established in plantings made in 1959. A few trials exhibit practically no weeds in the strawberry row, and this without any row cultivation or hand weeding. Cultivation between rows has been practiced to improve the root aeration. Berry samples

from each chemically treated row were under test at Oregon State College for possible residue in the fruit.

No chemical treatment will be approved until these lists are properly made and the fruit is found quite safe from any possible contamination. Possibilities are promising indeed. Cultivating and weeding operation include a major cost item in raising strawberries at present.

Station Superintendent Dick Bullock is not impressed with the double row strawberry planting system practiced by many during the past few years. Too much hand labor is involved in weed control. He finds also that pickers have difficulty in taking fruit from the center. It becomes necessary to employ two pickers per row, one for each side. At the end of the day pickers can harvest 30 to 40 per cent more poundage from single row plantings, an important factor. However, it now appears that different varieties may better be planted differently.

### Schmitz Home Fire-Damaged

The Jack Schmitz family of Sandy is in need of a house to wait out in while repairs are being made to their home severely damaged by fire a week ago. The master bedroom was completely destroyed in the Sunday afternoon fire, which was apparently caused by faulty electric wiring.

Mrs. Schmitz lost all of her clothing and personal jewelry in the blaze, the bedroom furnishings, and smoke damage was severe throughout the rest of the home. Damage was estimated to be at least \$1500, covered by insurance.

Schmitz was asleep on the living room sofa when the blaze broke out and escaped just in time from the smoke and fire.

The couple and their three children need a comfortable place to stay for the month or longer it will take to rebuild.

### TOO LATE TO CLASSIFY

WANTED: Someone to tear down garage in return for the lumber. MU. 7-3932. ch. 29

**Sandy Boys' BASEBALL**

**MIDGET BRAVES:** Played Rockwood, there, July 15; score: Sandy-18, Rockwood-10. Will play Wilkes, there, July 25. **LAST GAME:** Parkrose, there, on July 27.

**MIDGET BEARS:** Played Rockwood No. 2, there, July 14. Score: Sandy-5, Rockwood-3. Played Troutdale, there, July 19. Score: Sandy-27, Troutdale-14. Will play Parkrose, at Sandy, July 22. **LAST GAME:** Home game with Rockwood No. 1 on Tuesday, July 26.

**PIGMY YANKS:** Home game with Gresham July 15. Score: Sandy-5, Gresham-2. Home game with Parkrose July 19. Score: Sandy-12, Parkrose-6. **LAST GAME:** Tuesday, July 26, home game with Fairview-Troutdale.

**PIGMY CUBS:** Played Corbett, there, July 15. Score: Corbett-22, Sandy-2. Will play Lynch, there, Friday, July 22. Parkrose in a home game, Tues., July 26. **FINAL:** Home game with Rockwood,

Friday, July 29. **PEEWEE TIGERS:** Played Lynch, here, July 15. Score: Sandy-13, Lynch-0. Played Gresham, here, July 19. Score: Sandy-4, Gresham-0. **LAST GAME:** Home game with Parkrose on Tuesday, July 26. **NOTE:** If Sandy should win the last game with Parkrose on July 26, they will be in the playoff the first week in Aug.

**My Neighbors**

"Now pound them softly—your daddy wants to nap."

**STREET DANCE**

PARKING LOT OF SANDY REKALL DRUG --- SANDY FOOD CENTER

**Saturday - July 30**

**Live Band**

★ MUSIC ★ FUN  
★ BOOTHS ★ ENTERTAINMENT

DANCE 8:30 PM to 1:00 AM

Sponsored by  
Mt. Hood Jaycees

BRING THE WHOLE FAMILY

**HAPPY LANDING**

Whether it's a long trip or short, you'll be happier when you don't have to worry about carrying a lot of cash. You can't lose your money or have it stolen, when you carry Travelers Checks. Stop In.

**Clackamas COUNTY BANK**

Sandy's INDEPENDENT Bank

SANDY, ORE. MUTUAL 7-2271

MEMBER  
Federal Deposit Insurance Corporation

### PICNIC PACKING



Summer never seems long enough for all the picnicking we plan, so get out the picnic basket now and take advantage of these glorious summer days. And since a picnic is only as good as the food you bring, here are hints to make the outing a success. Plan menu to include food that is varied in flavor and texture, but will carry well. Pack food in aluminum foil so it will arrive at the picnic fresh and flavorful. Foil keeps flavor in and moisture out and is disposable, so you won't have to carry it home.

**Use Several Types of Spread**  
Sandwiches, the perennial favorite, can be made more interesting by using several types of bread. Spread bread with butter or margarine, add filling and wrap in aluminum foil. To keep lettuce crisp and tomatoes firm, wrap in foil and add to sandwiches at the picnic. A welcome addition to any picnic is a meat loaf, prepared the night before, cooled, sliced, and wrapped in aluminum foil. It travels well and stays moist and flavorful. Bread and butter sandwiches taste fine with this.

KEEP OREGON GREEN!



### Unexpected Company?

Don't fret... enjoy yourself. Whether it's a quick dessert or a full course meal, hospitality is as close as your freezer.



eat better electrically with a HOME FREEZER

PORTLAND GENERAL ELECTRIC COMPANY  
Oregon's Pioneer Electric Utility



**AW. SHUCKS!**  
YOU MEAN A GIRL HAS TO BE ABLE TO WRITE? TO GET HER . . .  
**Free Classified Ad**  
IN THE SANDY POST

Yes, honey, she's got to have it in her own handwriting and be under 13 years old. Tell your big sister to write

THE SANDY POST  
BOX 68  
SANDY, OREGON



## DRIVE A CHEVY CORVAIR

FOR ECONOMICAL TRANSPORTATION

If you haven't driven it yet, you don't know what a delight driving can be. Its steering, response, traction and roadability are unique because it's a unique car—the only U.S. car with an air-cooled airplane-type rear engine, transaxle and independent suspension at all four wheels. Be in on the know. Find out what delightful differences this advanced design makes.



Corvair 700 4-Door Sedan

See your local authorized Chevrolet dealer for economical transportation

## RICHARDSON CHEVROLET

LOOP HIGHWAY

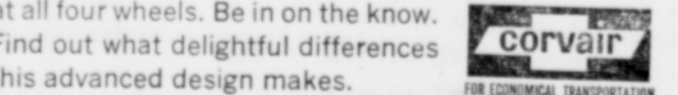
SANDY, OREGON

MU 7-2631

## FAMILY PUTS 2,000 MILES A MONTH ON CORVAIR THINKS IT'S MARVELOUS

GAS MILEAGE "OUT OF THIS WORLD"

Mr. and Mrs. Richard Kahelin of Plant City, Florida, couldn't be happier with the way their new Corvair has worked out as a combination family and business car. On their newspaper distribution route alone they travel more than 400 miles a week over all kinds of roads. Little wonder they're so pleased with the gas mileage they've been getting—"at least twenty-three miles to the gallon with an automatic transmission . . . and we've had no trouble with our Corvair." The Kahelins have equally good things to say about Corvair's easy-going comfort and unique convenience features. They especially like the way the fold-down seat doubles as a built-in baby sitter.



FOR ECONOMICAL TRANSPORTATION