

State Log Mart Still In Bog

CORVALLIS — Activity in the log market continues to be slow in most of the marketing areas. More mills are reporting that most of their purchases are now mainly on contract.

The only price changes reported during the past week were in the Coos Bay and the Corvallis-Philomath marketing areas. In the Coos Bay area most Douglas-fir log prices dropped \$5 a thousand. In the Corvallis-Philomath area No. 3 Douglas-fir peelers dropped from \$70 to \$65.

In the Central Willamette Valley, second-growth Douglas-fir sawlogs brought \$45 a thousand camp-run. Select mill logs were \$57.50. Buyers were taking only better grade stud logs at \$18 a cord. Hemlock was \$38 a thousand and White-fir was \$31.

In Columbia County, the Douglas-fir peelers brought \$95, \$85 and \$65. No. 2 and 3 sawlogs were \$40 to \$50, and \$30. Camp-run logs, depending on diameter, were \$39 to \$46 for longer lengths, with short logs ranging from \$30 to \$42. Eight-foot stud logs were \$34 to \$40 a thousand, or \$16 to \$18 a cord. Wood logs were \$10 a thousand. Cedar, hemlock and spruce brought \$25, with White-fir quoted at \$25 to \$30.

In Washington County, No. 2 sawlogs were \$44 to \$53, with No. 3's at \$40 to \$43. Eight-foot logs were \$36 a thousand.

In Clackamas County, the Douglas-fir peelers were \$95, \$85 and \$65. Long No. 2 and 3, second-growth sawlogs brought \$45 and \$36; short logs were \$34 to \$43 and \$30 to \$34. Eight-foot stud logs were \$35 to \$38 a thousand or \$16 per cord. Camp-run logs brought \$38 to \$40. Old-growth sawlogs were \$25 to \$55, depending on grade. No. 2 and 3 hemlock were \$30 and \$25. Eight-foot logs brought \$30 a thousand or \$13 a cord. No. 2 and 3 white-fir were \$30 and \$25.

Cedar brought \$21 to \$30, with eight-foot logs at \$30 a thousand or \$13 per cord.

This year for the first time federal grades are available for Christmas trees. The trees may now be sorted and sold on the basis of official standards. Marketing specialists believe these new grades offer possibilities of better returns to growers of good trees. Detached information on the Christmas tree grades may be obtained by writing W. L. Close, federal state inspector, State Department of Agriculture, Salem, Oregon.

Boring Span To Be Rebuilt

BORING — Construction crews closed the Barton-Boring road to traffic here Monday as work started on a new bridge across Deep Creek at the foot of Aemmisicker hill.

The bridge, ordered by the county court, will be built at a cost of about \$37,181 on the federal road aid program. Under the program the state and federal governments pay 40 per cent and the county pays 20 per cent of the cost.

The contract, allotted to Rogers Construction company, Portland, calls for completion of the bridge June 1, 1958.

Rogers is also working on the Redland-Logan road a bridge over Clear Creek on —CP—

Day Care Center Set For Retarded Children

OREGON CITY — The Clackamas County Association for Retarded Children is establishing a Day Care Center at the Atkinson Memorial Church Youth House in Oregon City. This program is to be free of charge and children of all ages are invited to attend.

Persons interested in further information about this program are urged to contact Mrs. John Hair at Oregon City.

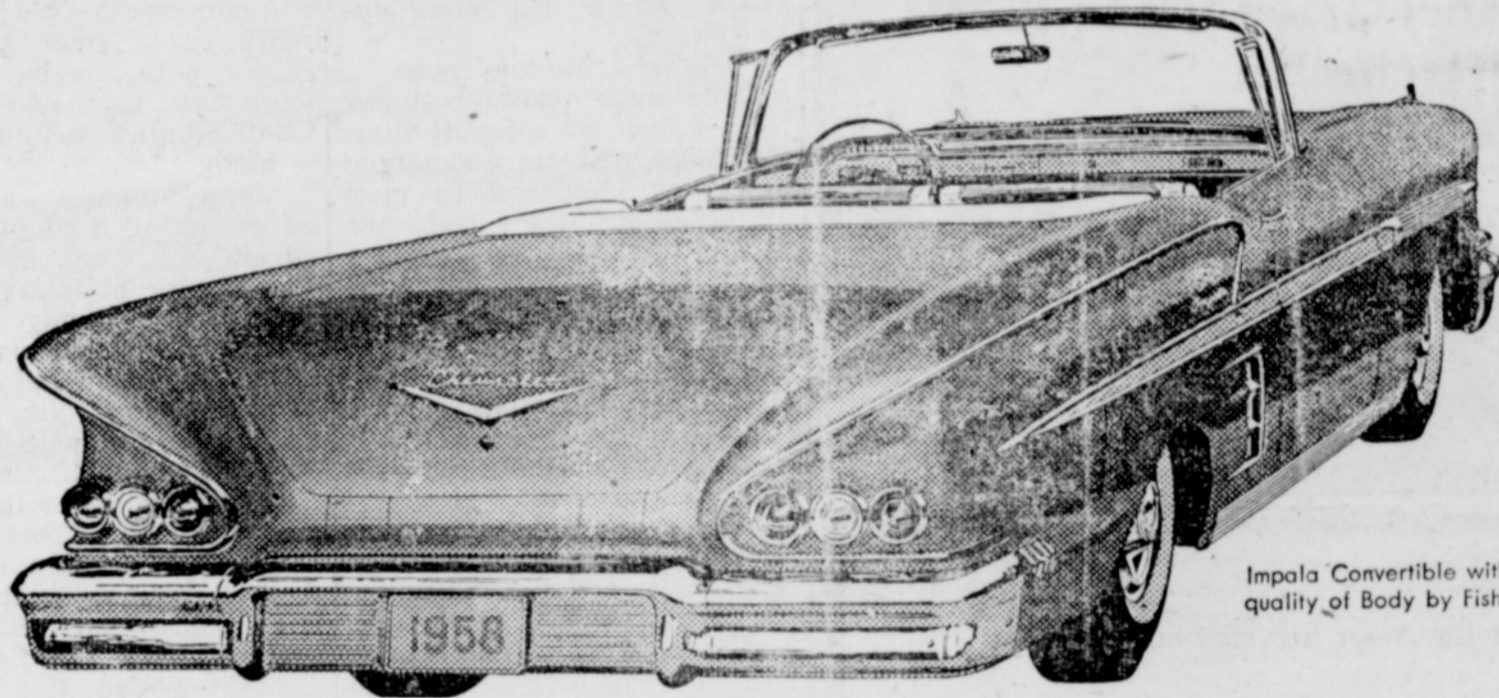
Sandy Crew Given State Safety Award

SANDY — The Sandy maintenance crew for the state highway department was one of 29 in the state which received awards of merit for achieving perfect safety records in 1956. W. C. Williams, state highway engineer announced today.

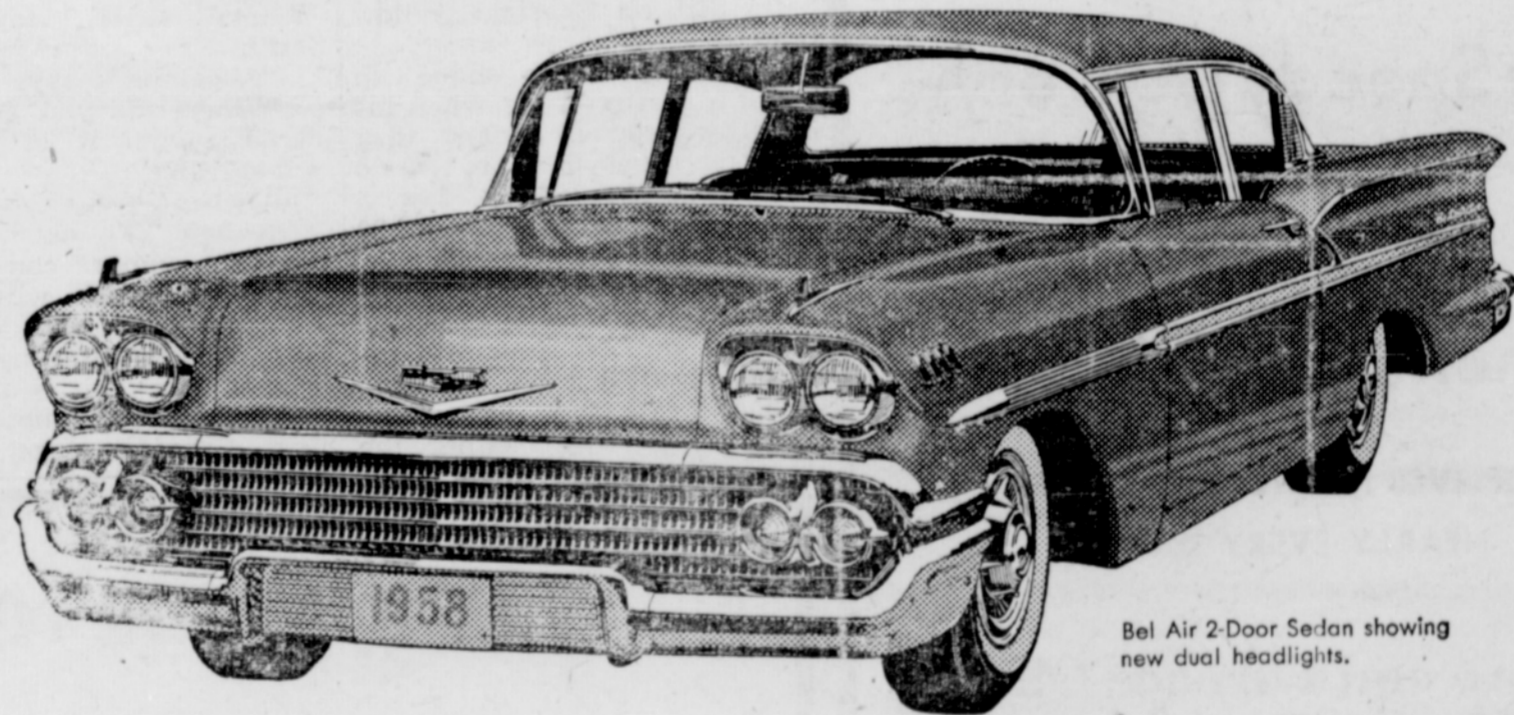
Each of the maintenance crews operated for the entire year with no personal injuries or vehicle accidents.

Mrs. Sophie Reseburg left on Saturday evening to spend the winter with her daughter Miss Pauline Reseburg in Oakland, California.

**THE YEAR'S NEWEST CAR,
THE NEWEST CAR IN YEARS
'58 CHEVROLET!**



Impala Convertible with the solid quality of Body by Fisher.



Bel Air 2-Door Sedan showing new dual headlights.

It sets a new style in styling. It takes a new approach to power. It's new right down to the smooth and solid way it rides!

It's long, low and luxuriously new—the beautifully moving '58 Chevrolet. It's new from ride to roof . . . from its bold new grille to its unique gull-wing rear fenders. And, it offers quick-responding power aplenty in any engine you pick—V8 or 6.

NEW SILHOUETTE, featuring a new body-frame design, is dramatically lower, wider—and a full 9 inches longer!

NEW TURBO-THRUST V8* featuring revolutionary Wedge-Fire design achieves a new pinnacle of performance.

NEW FULL COIL SUSPENSION provides cradle-soft action at every wheel, completely replacing conventional leaf spring rear suspension.

NEW AIR RIDE featuring Level Air suspension* carries you on cushions of compressed air, with all its natural shock-absorbing properties.

Your Chevrolet dealer is waiting right now to show you the beautiful way to be thrifty—the '58 Chevrolet. *Optional at extra cost

'58!



**NEW
COLEMAN
Oil Space
Heater**

50,000 B.T.U.
IDEAL FOR
GARAGE
BASEMENTS OR
CABINS

Complete with
SAFETY CARBURETOR

\$29.95

**Heber Bros.
Hardware**

141st & S.E. STARK ST.
AL 3-4558

by franchised Chevrolet dealers display this famous trademark



See Your Local Authorized Chevrolet Dealer