

# TRAILWAYS BUS DEPARTURES

**SANDY**  
 EASTBOUND  
 12:25AM 8:25AM & 10:30AM 4:40PM \*5:25PM @6:40PM  
**PORTLAND**  
 @7:00AM 8:10AM @11:50AM 4:30PM 5:20PM 11:37PM  
 \*Local to Timberline \*Local to Prineville \*Local to Bend \*On  
 Sundays and National Holidays this schedule will run 30 min-  
 utes later @Daily except Sundays and National Holidays.  
 D. H. Huhman's Union Station, Agent, Ph. 661

## Plumbing, Heating, Sheet Metal Work

Oil Burners - Pumps - Furnaces  
 Pipe, Valves and Fittings

## Peterson Plumbing And Heating Company

Phone 754 147 E. Powell

## Fast, Efficient Service

AND THE BEST  
 IN OIL HEAT  
 FOR YOU

That's Our Business



We'll be glad to see that you always have  
 ample fuel on hand for your needs.

If your heating unit is a gun-type furnace, we have  
 Standard Furnace Oil with Thermisol. For pot-type  
 burners, we carry and recommend Standard Stove  
 Oil. You'll like the cleaner-than-ever heat you get  
 from either of these two great Standard fuels.

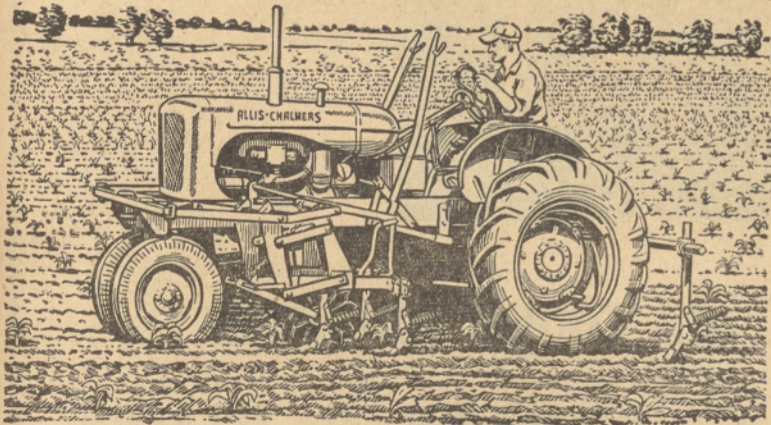
Prompt deliveries... by courteous personnel, in  
 modern, meter-equipped trucks. Call us today, and  
 let us take care of your heating oil problems.

## Gresham Seed & Feed

COMPANY, INCORPORATED

Foot of 2nd St. Phone 284

## EASY CULTIVATION



### the A-C Way

New cultivators for CA and WD Tractors save both you  
 and your crops. Here's how:

**POWER SHIFT WHEELS** move  
 out to cultivating width  
 with engine power. No  
 lifting, less time lost.

**DRIVE-IN CULTIVATORS** are  
 front-mounted without  
 heavy lifting or re-spacing  
 of inside sweeps. Gangs  
 swing in place like a gate.

**PARALLEL LINKS** pull sweeps  
 out to the ground quickly and  
 naturally, keep them run-  
 ning level at the right  
 depth without forcing.

**DELAYED HYDRAULIC LIFT**  
 keeps rear bar down until  
 sweeps or shovels reach the  
 end of the row.

Now is the time to get a cultivating outfit that really  
 works for you. Let us show you these new WD and CA  
 cultivators today.

Tune in  
 the National  
 Farm and Home  
 Hour - Every  
 Saturday - NBC

**ALLIS-CHALMERS**  
 SALES AND SERVICE

## FARM TRACTOR CO.

Phone Gresham 760 Boring Road

## ABOUT THE FARM - - -

### Notes by the Wayside— New Cheap Weevil Control Found; Port Orford Cedars Arrive In March

By John J. Inskeep, County Agent

Announcement of a new and inexpensive control for straw-  
 berry root weevil marks another milestone in man's effort to  
 outwit his insect enemies. The announcement was made at county  
 berry growers' meetings at Kelso and Beaver-  
 creek during the month of February.



Those concerned with this development are  
 careful not to make extravagant claims because  
 field trials were not initiated until 1948. It is  
 their feeling that trials extending over a period  
 of three years is not sufficient for unqualified  
 recommendation. At the same time results have  
 been so satisfactory that it was decided to make  
 them public and to suggest the practice for trial  
 if not for the entire area to be planted.

The material used is chlordane at the rate of  
 8 to 10 pounds of the technical material per acre. This means  
 then, if the grower purchases 40 per cent wettable chlordane, he  
 would use 20 to 25 pounds per acre. Chlordane may be broadcast  
 over the field prior to planting, mixed with fertilizer and broad-  
 cast or sprayed over the area to be planted.

In any case the material should be disced into the soil  
 so as to get the uniform distribu-  
 tion in the first six inches  
 of topsoil.

#### Before Planting

This method may be used pri-  
 or to planting strawberries and  
 cane fruits which are severely  
 attacked by root weevils. The  
 cost approximates 14 to 18 dol-  
 lars per acre. Trials, so far, in-  
 dicate effective control for a pe-  
 riod of at least three years.

Preliminary trials indicate ex-  
 tremely effective control at a  
 comparatively low cost when  
 compared to use of weevil baits  
 but the Extension Service does  
 not yet recommend elimination  
 of bait.

More complete information  
 may be secured in Clackamas  
 County Extension Circular,  
 "Chemical Soil Treatment for  
 Strawberry Root Weevil Con-  
 trol." It is our suggestion that  
 those contemplating use of this  
 material obtain the circular and  
 follow instructions in detail.

#### Sandy-Boring Risks

We are quite proud to make  
 this announcement for this is  
 essentially a Clackamas county  
 development. As usual someone  
 took calculated risks. Progress-  
 ive pioneer spirit is still alive.  
 Which growers risked their crops  
 for something new? They in-  
 clude Glenn Schaeffer, Harold  
 Bushue and E. M. "Bub" Nelson  
 in the Boring-Sandy area and  
 Elwood Faist, Canby. Elements  
 of risk included possible damage  
 to plants and possible "off fla-  
 vor" to fruit from treated fields.  
 No detrimental effects have been  
 noted and this matter has been  
 given careful attention.

Also cooperating in this pro-  
 ject for initiating the idea, Ex-  
 tension Entomologist Robert Every  
 and Charles Starker who repre-  
 sents a chemical supply ware-  
 house. Garolan has given close  
 attention to the project from its  
 inception to announcement of  
 results last month.

It is interesting to note that,  
 unknown to Oregon folks, Mich-  
 igan State College carried on re-  
 search of the same nature at  
 the same time and arrived at  
 an identical conclusion.

#### Geese For Weeds

Many folks poked a little fun  
 at the idea of using geese for  
 controlling weeds when we first  
 brought it to public attention a  
 few years ago. But shortly af-  
 ter, there was a general scramble  
 for breeding stock and hatching  
 eggs. For a time general interest  
 seemed to lag. But the goose  
 population has been on the in-  
 crease.

Take Ambrose Brownell, Con-  
 cord, for instance. Ambrose has  
 a field of holly on which plant-  
 ing was made on ridges. Culti-  
 vation with machinery was im-  
 possible and hand cultivation ex-  
 pensive, he found. Grass grew  
 as tall as the young trees and  
 sapped the soil of moisture and  
 fertility. So he purchased a  
 few geese.

"I am delighted with results,"  
 he reports. These geese have  
 eaten the grass right down to  
 the ground with no apparent  
 damage to the trees."

Major W. C. Hanna, Stafford,  
 was a recent office caller. He  
 has seeded his filbert orchard  
 down to grass and legumes and  
 is now running 15 head of Cor-  
 riedale sheep. "I got my start  
 from Lou Matzen, Wilsonville  
 and have more good pasture  
 than I know what to do with.  
 And also," he said, "we have  
 raised a few geese for many  
 years. Geese do very well on  
 grass, with no other feed. We  
 find that grain fattened geese  
 look nice but they shrink badly  
 when cooked. Grass raised and  
 fattened geese are the best of  
 all for eating and cheap to  
 raise."

Someone might just raise  
 geese in commercial numbers.  
 Wonder how cost of gains per  
 pound would compare with cost  
 of raising turkeys and other  
 meat birds?

later blooming variety could be  
 expected to mature at a time  
 when good hay weather is the  
 rule.

**Seed From New Zealand**  
 Oscar Loe, Silverton, told us  
 of this clover on his return from  
 a trip to the British Isles and  
 Central Europe several years  
 ago. We helped him find seed  
 in New Zealand. This he plant-  
 ed on his farm in the Waldo  
 Hills about five years ago, as  
 we remember it. Both Oscar  
 and Harry Riches who was ex-  
 tension agent in Marion county  
 at that time, liked this clover  
 very much.

Here is hoping that we have  
 enough moisture to insure stands  
 this year so we can make com-  
 parisons of Montgomery red  
 with common red. Montgomery  
 red is more or less of a peren-  
 nial in New Zealand and, for  
 that reason is used in many pas-  
 ture mixtures there, as well as  
 for hay crops.

#### Grade A Eggs Down

"Good news for housewives.  
 Grade A eggs are down to 52  
 cents a dozen." This from a glib  
 radio announcer last week. And  
 it would be good news were it  
 possible to produce eggs at this  
 price or lower and make any  
 money.

With egg mash selling at more  
 than \$100 a ton it cannot be  
 done. This situation may dis-  
 courage the purchase of baby  
 chicks this spring. In fact, we  
 are informed, that this is exactly  
 what is happening. So our faith-  
 ful announcer may say next fall,  
 "The price of eggs are at an  
 all-time high. Inflation is here."

#### Who Gains?

Why is it that everyone thinks  
 that all other products should  
 sell at high prices but that prices  
 of farm products should be low  
 at the same time? Nobody gains  
 from widely fluctuating farm  
 prices. The consumer has little  
 to gain when the producer is  
 forced out of business.

The present situation does not  
 look good for anyone concerned.

#### Gift Trees

Crown Zellerbach Port Orford  
 gift trees, for windbreaks, hedg-  
 es and reforestation are expect-  
 ed to arrive early in March.  
 Those who want trees, not yet  
 allotted, should contact the Ex-  
 tension Office in Oregon City.  
 Phone 3510, write or call. Notic-  
 es will be sent when the trees  
 arrive. Sorry but these trees  
 cannot be mailed. Folks ob-  
 taining them should call at the  
 office shortly after being noti-  
 fied of arrival.

#### OUT OF THE PAST

Auto models never seen by the  
 present generation of youngsters  
 will be on display at Portland's  
 official Motor Show in the  
 Pacific International Pavilion  
 March 15-23 - Mercer, Palmer  
 Singer, Stutz, Stoddard Dayton,  
 Lafayette, White, Stevens Dur-  
 yea, Saginaw and Hupp.

#### CENTERPOISE POWER

Vibration and power  
 impulses are "screened  
 out" as engine is  
 centered and rubber-  
 cushioned between new  
 high-side mountings.

#### LARGEST BRAKES

Big 11-inch brake  
 drums apply more  
 leverage for more  
 stopping power. Stops  
 are smoother, safer,  
 with less effort.

#### WIDEST COLOR CHOICE

26 rich new colors and  
 two-tone combinations  
 - widest choice in  
 Chevrolet's field. New  
 De Luxe interiors are  
 color-matched.

#### BODY BY FISHER

Fisher Body sets the  
 standard—for styling,  
 for craftsmanship, for  
 comfort! Fisher Uni-  
 steel construction is  
 extra strong.

#### UNITIZED KNEE-ACTION RIDE

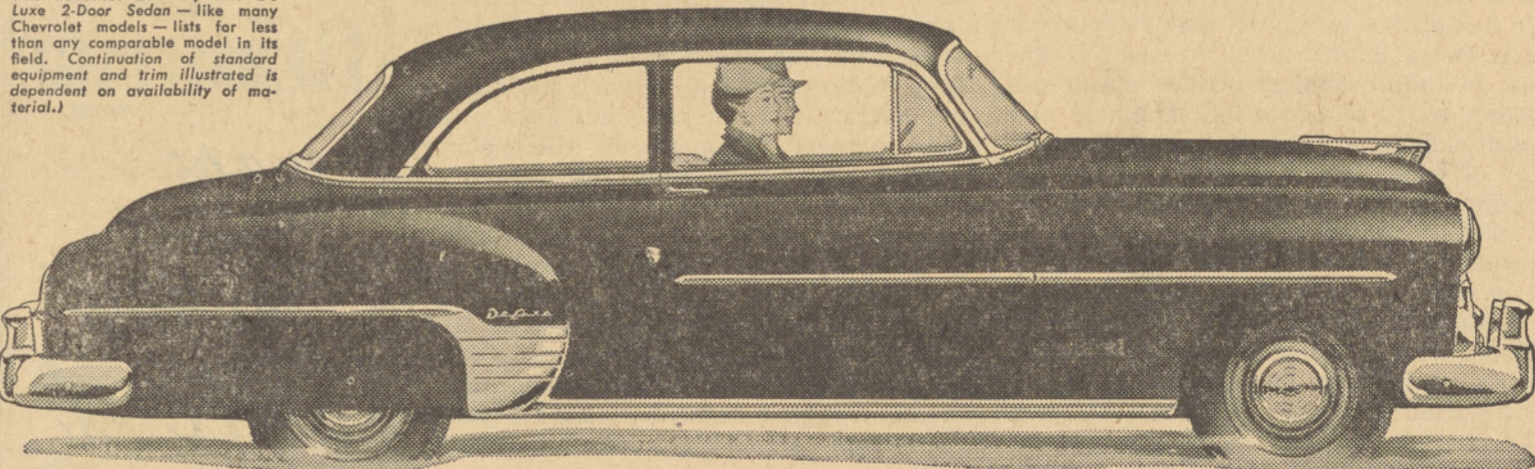
Chevrolet's famous  
 Knee-Action ride is  
 now even softer,  
 smoother. New shock  
 absorbers give even  
 finer ride control.

#### WIDEST TREAD

Chevrolet measures  
 58 3/4 inches between  
 centers of rear wheels  
 - a broader base to  
 give you more sta-  
 bility, less sway!

#### Lowest priced in its field!

This beautiful new Styleline De  
 Luxe 2-Door Sedan - like many  
 Chevrolet models - lists for less  
 than any comparable model in its  
 field. Continuation of standard  
 equipment and trim illustrated is  
 dependent on availability of ma-  
 terial.



#### 4-WAY ENGINE LUBRICATION

Chevrolet's exclusive  
 engine lubricating sys-  
 tem supplies exactly  
 the right kind and  
 amount of lubrication  
 to each moving part.

#### CAST IRON ALLOY PISTONS

The same material as  
 the cylinder block, pis-  
 tons expand and con-  
 tract at same rate. This  
 reduces wear, lowers  
 oil consumption.

#### SAFETY PLATE GLASS ALL AROUND

Chevrolet alone in its  
 field gives you safety  
 plate glass in wind-  
 shield and all win-  
 dows, for a clearer,  
 truer all-round view.

#### POWERGLIDE AUTOMATIC TRANSMISSION

Simpler with fewer  
 parts to wear. Smoother  
 - no complicated in-  
 termediate gears. Op-  
 tional on De Luxe  
 models at extra cost.

#### MOST POWERFUL VALVE-IN-HEAD ENGINE

Teamed with Power-  
 glide is the most pow-  
 erful valve-in-head en-  
 gine in its field and an  
 outstanding performer  
 in any field!



The Only Fine Cars  
 PRICED SO LOW!

## BEESON CHEVROLET

Sandy, Oregon

Phone 571

CHAIN SAWS CHAIN SAWS

## JESS L. BARR

Patent and Equipment Co.

13015 S. E. Powell

SUNset 8337

Portland 66, Oregon

SALES - SERVICE - RENTALS

Dealer for IEL - MALL

DISSTON

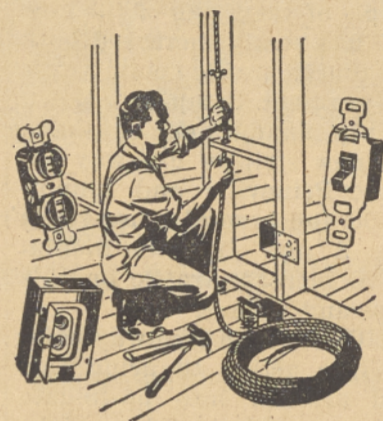
WOODBOS



SAWS NIVHO

SAWS NIVHO

## IT TAKES JUST ONE ROTTEN APPLE TO SPOIL A BARREL!



What's this got to do with electrical contract-  
 ing? Plenty! Because, as with apples, it  
 takes just one faulty electric wire to start a  
 fire. Call us today to do your wiring and  
 KNOW that your home is safe.

Pumps for Home and Irrigation  
 Sold and Installed

FREE ESTIMATES

Guaranteed Radio Repairing

Wiring Contractor - House Wiring

## Norquist Electric

Phone 601

Sandy, Oregon

Only the New Chevrolet  
 brings these fine features  
 to the low-price field!

No other car in Chevrolet's field offers you a single  
 one of these features. Yet you'll find many of them in  
 America's most costly cars. Here's proof that you're  
 value ahead with Chevrolet... again in 1952 the  
 lowest-priced line in its field! Come in and look it over.  
 MORE PEOPLE BUY CHEVROLETS THAN ANY OTHER CAR!