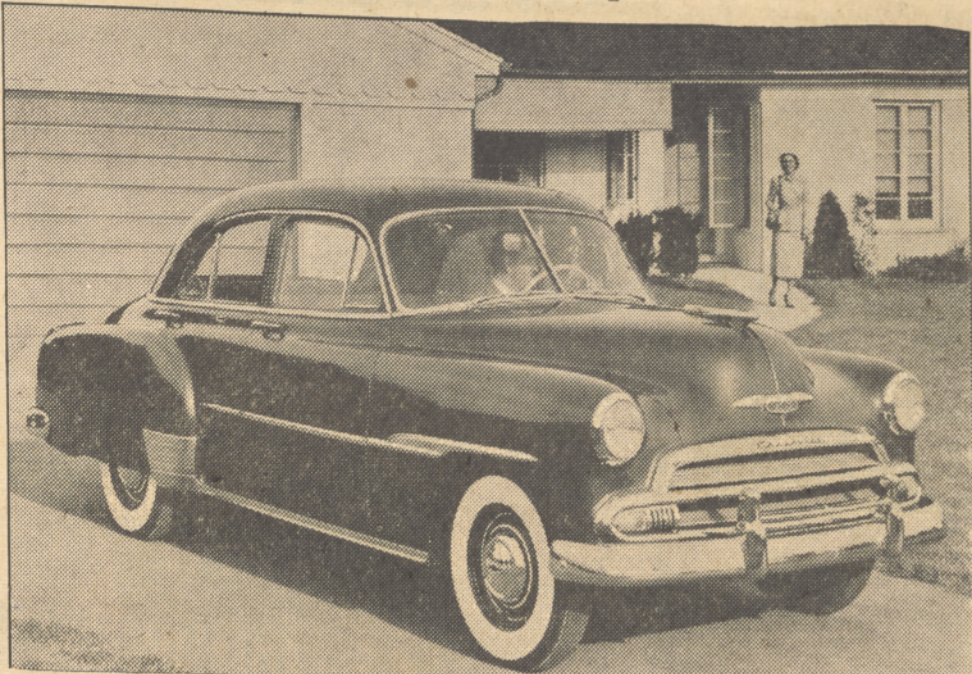


**Fir Logs Wanted At Good Prices**

We give full scale and pay cash each week for Old Growth Yellow Fir Peeler delivered to our plant in Gresham.  
**OLYMPIC MFG. CO.**  
Division, The Dean Co.  
Gresham, Oregon  
PHONES:  
Gresham 265, KENwood 5223

**Fresh Chevrolet Styling Imparts Lower Lines**



The Styleline De Luxe 4-door sedan is one of the 14 models introduced by Chevrolet as its passenger car line for 1951. Notable in this picture are the design improvements which accentuate a longer, lower appearance. Radiator grilles have been simplified, the decorative body moulding lowered and rear fender crowns raised. Models also offer added safety.

**Agricultural Research Progress Shown In Annual Experiment Station Report**

The contribution of agricultural research to the prosperity of Oregon and the important part played by science in furthering agricultural progress, are outlined in the 1950 annual report of the Oregon State college agricultural experiment station which has just been released. Titled "Oregon's Agricultural Progress Through Research," the 165-page report summarizes the activities and achievements of the central and branch experiment stations and experimental areas located throughout the state. The publication stresses research progress during the 1949-50 fiscal year and contains the latest information available for publication on most of the agricultural research being carried on in Oregon. "The diverse nature of Oregon's agriculture extends the work of the experiment station into a wide variety of fields, each of which has problems whose solutions are important to continued agricultural prosperity in the state," William A.

Schoenfeld, dean and director of agriculture emeritus, points out in the foreword. Written in readable form, the report contains more than 60 photographs illustrating agricultural research projects. For convenience in reading, the report is organized on a commodity basis. Major sections deal with field, forage and seed crops; horticultural crops; soil and water conservation; livestock; dairy production and processing; poultry; wildlife and marine, and home economics. The report was prepared by Sam H. Bailey, experiment station editor, and Norville R. Gish, assistant experiment station editor.

**ENJOY THIS GREAT STRAIGHT BOURBON**  
\$2.25 pt.  
\$3.60 1/2 qt.

Century Club  
STRAIGHT BOURBON WHISKEY  
NATIONAL DISTILLERS PRODUCTS CORPORATION, N.Y.

Sandy Post Classifieds Bring Results

**NUCOA For HOLIDAY GOODIES**  
Tops For Cakes - Candies - Cookies

**2 LBS. 67c**

For Smackin' Good Salads  
**Best Foods**  
Real **MAYONNAISE**  
quart **83c**

**FREE! Menu Planner Booklet**  
**CENTRAL POINT GROC.**  
R. T. FRENCH, Prop.

**BETTER RESULTS with LOWER COSTS**

"After using Triangle Feed for two years I find I get better results on production and egg grades with lower feed costs than on any other feeds ever used."

**GEO. A. BUTSCHKE**  
St. Helens, Oregon

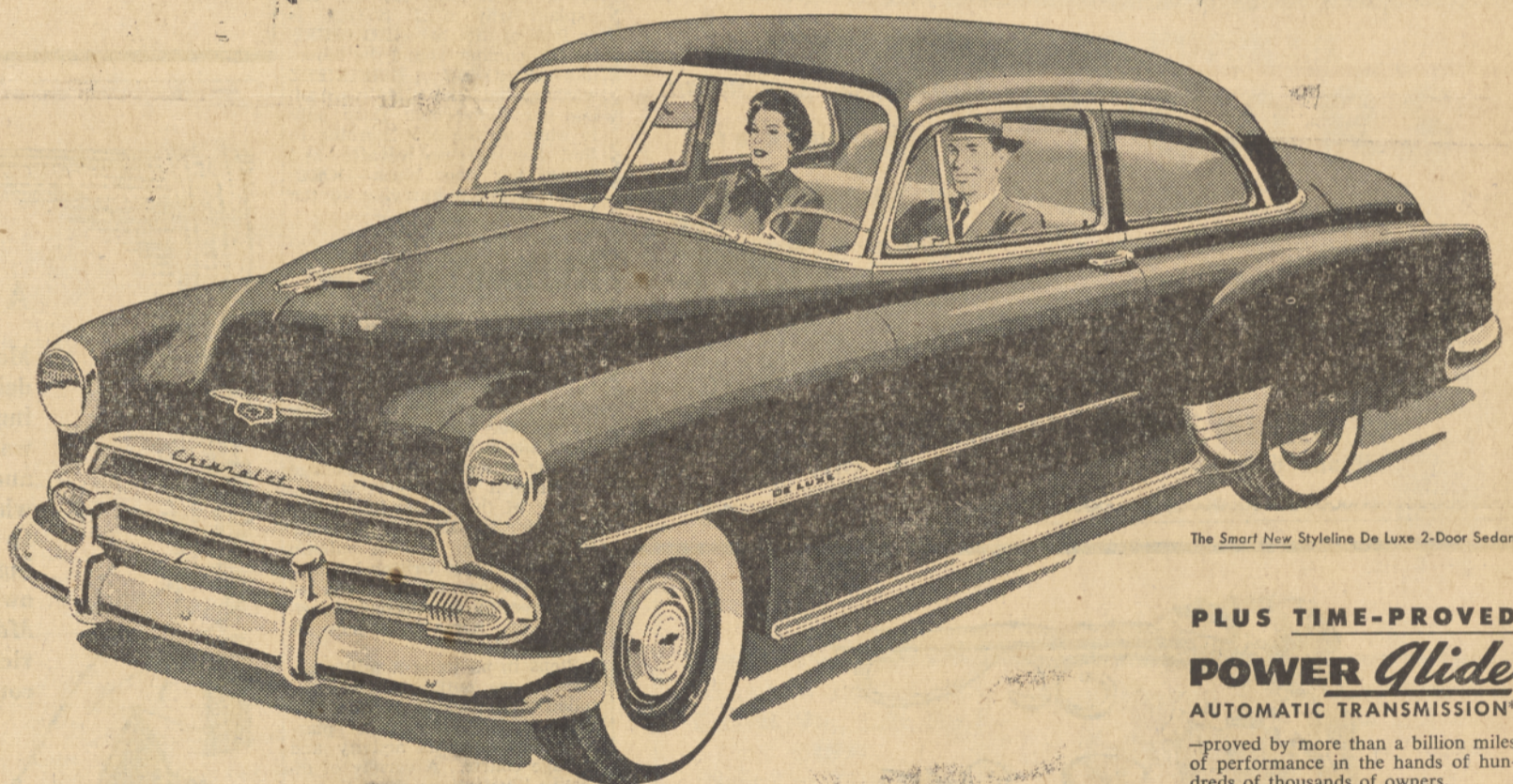
Take the word of hundreds of practical poultry raisers who have found they can get better profits and save money on feed costs with Triangle specialized feeds.

Now is the season your flock of layers needs Triangle X-tra Egg Producer for greater egg production.

**TRIANGLE MILLING CO.**  
PORTLAND, OREGON

Your **TRIANGLE** Dealer is ready to help you  
**Meinig's Grocery**  
Phone 91 Sandy

**NEW 1951 Chevrolet**  
**AMERICA'S LARGEST AND FINEST LOW-PRICED CAR!**



The Smart New Styleline De Luxe 2-Door Sedan

**All the things you want- IN THE NEWEST NEW CAR FOR '51!**

Choose Chevrolet and you'll own the newest new car for '51 . . . the car that is refreshingly new, inside and out . . . with that longer, lower, wider "luxury look" which stamps it as most beautiful in its field. You'll own the only car that offers you your choice of the finest, time-proved no-shift driving\* or standard driving, at lowest cost. You'll own the car that gives the top-flight combination of thrifty Valve-in-Head engine performance, riding-comfort and safety. Come in . . . see and drive Chevrolet for '51 . . . America's largest and finest low-priced car!

- NEW!** AMERICAN BEAUTY DESIGN—Brilliant new styling . . . featuring entirely new grille, fender moldings and rear-end design . . . imparting that longer, lower, wider, big-car look which distinguishes Chevrolet products.
- NEW!** AMERICA-PREFERRED BODIES BY FISHER—With new and even more strikingly beautiful lines, contours and colors . . . with extra sturdy Fisher Unisteel construction . . . Curved Windshield and Panoramic Visibility.
- NEW!** MODERN-MODE INTERIORS—With upholstery and appointments of outstanding quality, in beautiful two-tone color harmonies . . . and with extra generous seating room for driver and all passengers on big, deep "Five-Foot Seats."
- NEW!** MORE POWERFUL JUMBO-DRUM BRAKES (with *Dubl-Life rivetless brake linings*)—Largest brakes in low-price field . . . with both brake shoes on each wheel self-energizing . . . giving maximum stopping-power with up to 25% less driver effort.
- NEW!** SAFETY-SIGHT INSTRUMENT PANEL—Safer, more efficient . . . with overhanging upper crown to eliminate reflections in windshield from instrument lights . . . and plain, easy-to-read instruments directly in front of driver.
- NEW!** IMPROVED CENTER-POINT STEERING (and Center-Point Design)—Making steering even easier at low speeds and while parking . . . just as Chevrolet's famous Knee-Action Ride is comfortable beyond comparison in its price range.

\*Optional on De Luxe models at extra cost.



**MORE PEOPLE BUY CHEVROLETS THAN ANY OTHER CAR!**

**BEESON CHEVROLET**

Phone 681 On Mt. Hood Loop Highway Sandy, Oregon