

**PROFESSIONAL SERVICES**

**Clifford G. Schneider**  
ATTORNEY  
203-5 Withrow Building  
Gresham, Ore. Gresham 4921

**Paul R. Biggs**  
Attorney at Law  
Clackamas County Bank  
Every Saturday from 9 a.m. to Noon,  
Phone 71 Sandy, Oregon

**Dr. H. A. Schneider**  
DENTIST  
— Phones —  
Office 151 - Residence 6x2  
SANDY, OREGON

**Dr. Wm. M. Grashorn**  
DR. HENRY SHERWOOD  
Dentists  
Phone 831 Sandy  
Koch Bldg.

**DR. A. J. STEPHENS**  
Chiropractic Physician  
108 South Roberts, Gresham  
Phone Gresham 737  
Mon. and Thurs. evenings until 7  
Closed Wed. and Sat. Afternoons

**E. P. Greenwood, M. D.**  
Physician and Surgeon  
Office Hours  
10 A.M. to 5 P.M.  
Daily Except Sunday  
PHONES—Office 641, Res. 461  
Main St. Sandy, Ore.

**Walter A. Noehren, M. D.**  
PHYSICIAN AND SURGEON  
X-Ray and Laboratory  
Office Hours: Daily 10-5  
Evenings: 7-8 Mon., Wed., Fri.  
Main Street, Sandy, Oregon  
Former Clack. Co. Bank Bldg.  
Phone Sandy 181  
Day and Night

**W. J. GARDNER, M. D.**  
**J. L. McMILLAN, M. D.**  
Physicians and Surgeons  
807 E. Powell Blvd., Gresham  
Phone 3040  
If no answer call 3171 or 3812

**Charles H. Carlstrom, D.O.**  
Osteopath  
Physician & Surgeon  
Koch Building  
Sandy, Oregon  
Phone Sandy 851

**DR. PERCY A. POWERS**  
**DR. K. M. TABBERSON**  
Veterinarians  
Large and Small Animal Surgery  
and Disease Control  
Artificial Insemination—Cattle  
520 N. W. Division  
Phone 291 Gresham, Oregon

**BUSINESS DIRECTORY**

**BRENTON VEDDER**  
INSURANCE - NOTARY PUBLIC  
Shelly Street between Sandy Market  
and Scales Store. — Phone 102

**JOHN R. MURRAY**  
General Insurance  
At George W. Beers Real  
Estate Office.  
Phone 162 Loop Highway

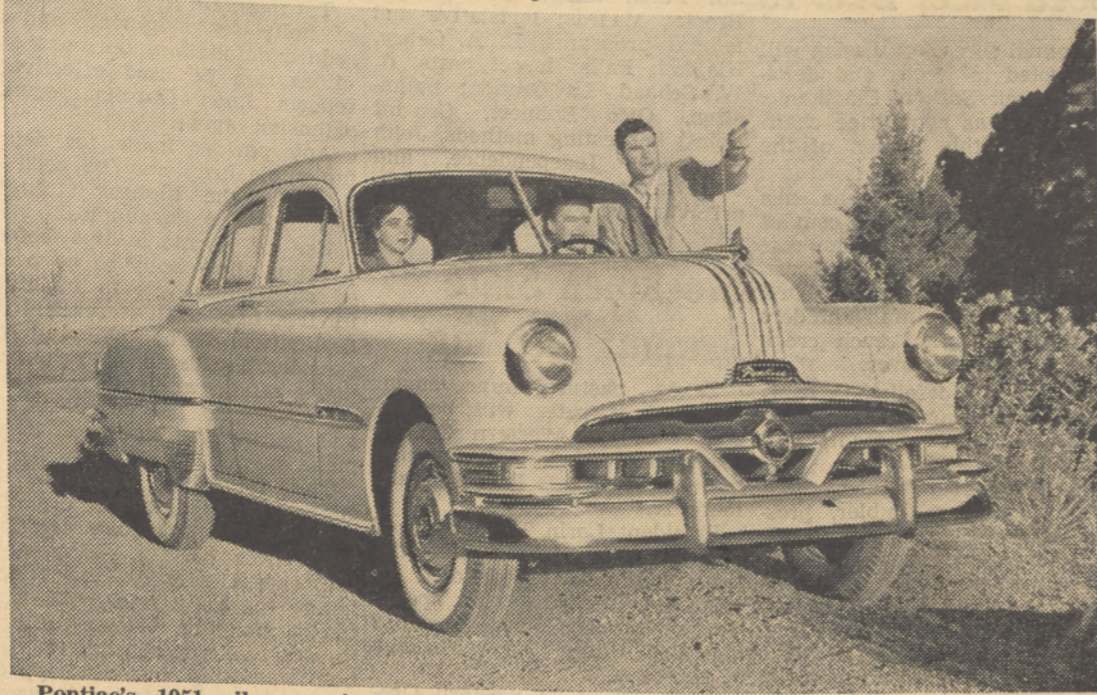
**Duke & Proctor**  
INSURANCE AGENTS  
—  
Telephone 71  
SANDY, OREGON

**SANDY REST HAVEN**  
"A Home for Invalids, Conval-  
escent Patients and Those Need-  
ing Nursing Care."  
Operated by a registered nurse  
Phone Sandy 882

**WALRAD**  
Insurance Agency  
Sandy and Gresham, Oregon  
Phone Sandy 861  
Phone Gresham 747  
Direct Portland Line KE 3114

**KINGWELL AGENCY**  
Sandy Branch Office  
**C. C. CHASE, Salesman**  
REAL ESTATE  
INSURANCE  
109—3rd Avenue  
Phone 1211

**Silver Anniversary Pontiacs Make Bow**



Pontiac's 1951 silver anniversary models bring 28 fresh styling innovations and 17 mechanical improvements to the line. The new Pontiacs, now on display, again are available with 6 or 8 cylinder engines. All models offer a choice of Hydra-Matic or synchro-mesh transmission. The popular Chieftain 4-door sedan pictured exemplifies the advanced styling of the Pontiac line.

planted alfalfa has suffered considerable slug damage.

Metaldehyde, calcium arsenate bran bait broadcast where slugs are causing damage is the recommended control. Most dealers carry slug bait in pellet form easily broadcast in the field. Indications are that many are unaware of the damage. One grower came in and said that something had defoliated fall planted crimson clover, causing destruction of the plants. He had not realized that slugs had caused the damage.

Radio stations and local papers were informed as soon as we became aware of the situation.

Many a guy who thinks he is stealing a kiss, fails to realize he is losing his freedom.

Get Your Wedding  
Announcements at  
The Sandy Post

**CLASSIFIED ADS  
PAY  
Try One Today!**

**JACK'S AUTO SERVICE**

Complete Truck and Auto Repair

Arc and Acetylene Welding

Experience and Economy

Free Estimates

— OPEN EVENINGS —

Corner Loop Highway and Bluff Road

**ABOUT THE FARM ---**

Notes by the Wayside—

**Clackamas Farmers Show Interest In Local And National Farm Publications**

By John J. Inskip, County Agent

Clackamas county farm residents must be avid readers. Shortly after articles appear in national or local farm publications discussing new crops or new farm practices, which might be of value here, we have a flood of inquiries.

Yes, and often we get caught not knowing the answer and have to do some studying.

Kudzu, a legume of the cotton belt states, is often the subject of inquiry. This last week we had an inquiry from Estacada about Kudzu. This showy legume is not adapted here because our climate is too cold and, that is that, with no uncertainties. Kudzu is a perennial legume propagated either by seeds or by planting live roots. Under favorable conditions Kudzu plants send out long, very long, laterals producing large yields of forage. These laterals may reach a length of over 20 feet and may be a quarter of an inch in diameter, as we remember it.

During our southern trip in the spring of 1947, we saw Kudzu runners which had, the past summer, climbed quite high trees in the adjoining fence row. This was near Auburn, Ala., and we have a good picture of the scene here on the office.

Near Anderson, S. C., we visited with Extension Agent J. H. Hopkins, a young farmer broadcasting phosphate and potash on a Kudzu planting which he was using to stop erosion and reclaim a steep hillside.

It is for this latter purpose that Kudzu is probably most useful. As a matter of fact, Kudzu has been over publicized because it is a showy plant good for picture taking. It will not stand exceedingly heavy pasturing or heavy cutting, and demands large animal applications of mineral fertilizers. Its use again is limited mostly to use on non-tillable land.

Lespedeza is another plant useful from the southern edge of the corn belt south nearly to the Gulf of Mexico, but not well adapted here. The annual or Korean type of this legume is fine and leafy, making good pasture. Annual lespedeza volunteers readily.

Southern stockmen commonly spend \$30 an acre on September plantings of oats and lespedeza. Such plantings are fertilized with 800 pounds or so of a complete fertilizer followed with additional nitrogen applications in October. Pasturing starts in about 6 weeks after planting. Oats are pastured all winter. Sometimes a grain crop is taken after which lespedeza comes on to make summer and early fall pasture.

We have seen few plantings of lespedeza since our limited travels have not taken place during summer when lespedeza grows best. We did see a very nice planting on Lawrence Munsel's place in eastern Kansas, Nemaha County about 1942.

Of lespedeza there are two general types, Korean, or annual and sericia, or perennial. Brad Woodard had a very nice planting of the latter on his farm near the Liberal bridge, spanning the Molalla, 10 years or so ago. But sericia does not approach the value of the many grasses and legumes recommended here. Sericia plants, here at least, are inclined to produce woody stems not too well relished by livestock.

Fred Kamrath, Jr., made a trial planting of annual lespedeza on the Kamrath farm near 10 o'clock church, it must have been 20 years ago, before we had our present popular grasses and legumes firmly established. This one did not do too well either. We would not be discouraged because of unsuccessful initial plantings of these crops except that the Oregon Experi-

program continues at a fast clip. Several have made interesting trial plantings.

Bill Vick, Molalla, says he made a trial acre planting of alta fescue, Cornell Timothy and Tallarook sub-clover east of his house on Vick road this fall.

Vernon Hepler, Barlow, reports a 6 acre planting with a mixture of alta fescue, chewings fescue, sub-clover and New Zealand white clover. On an acre and a half of the 6, he included 15 pounds of European burnet. It will not be long until we can see how burnet is performing under field conditions. Vernon secured his seed from Jack McDermid, Red Soils experiment station superintendent.

This Cornell Timothy, Bill Vick observes, "May be excellent for late summer pasture on heavier soils. I helped Harold Ridings harvest his 10-acre field, lying across the road from my property, in September. The planting was still green enough for hay."

Harold Ridings will have the first lot of Cornell Timothy seed grown in Clackamas county, possibly in Oregon, for sale as soon as his productions have been cleaned.

Garden slugs are on the prowl again this fall causing damage to summer and fall planted legumes. Among those reporting damage are Vernon Hepler, Barlow, who says that he had to bait his new fall pasture planting to keep slugs from destroying sub-clover and white clover in the mixture. Ed Campbell, Hog Hollow, says that his spring



CHRISTMAS

*Greetings*

Greetings to our friends and our neighbors on this Happy Holiday. Let the bright spirit of the day fill all your days with the light of cheer and good health.

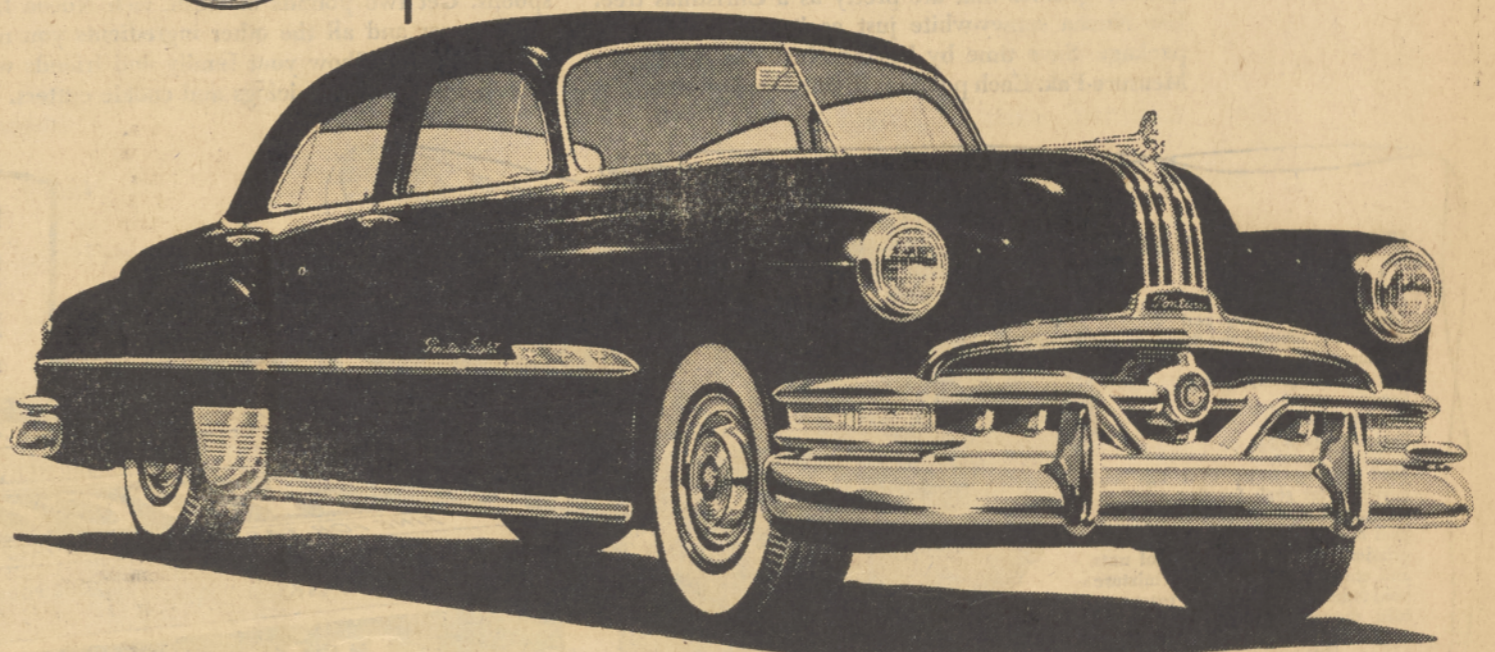
**Big 8 Lumber Co.**

Phone 103

Mr. and Mrs. Joe Yoerger

Sandy, Oregon

**Come in and see the  
New Silver Anniversary  
Pontiac**



**Double Proof**

that Dollar for Dollar  
you can't beat a Pontiac!

① A look at the Car proves its Quality

② A look at the Price proves its Value!

In the short time since it was presented, thousands of people have flocked to see the great new Silver Anniversary Pontiac—few cars have ever had a reception to equal this. Most people came to admire, which is natural enough. But a great many people do more than admire, they start figuring—they begin to compare this wonderfully beautiful and desirable car with the modest price tag it bears. No car, at any price, offers more for every new car dollar you invest than a great new Pontiac! Drop in any time and look at the car—then look at the price—you'll be doubly sure that dollar for dollar, you can't beat a Pontiac!

\* \* \*

**GEORGE S. KOCH MOTOR CO.**  
MAIN and FIRST  
SANDY, OREGON