



Have Your Work Done By A TRAINED TECHNICIAN Guaranteed Results

ROLLIE'S RADIO & TELEVISION
Finest and Most Economical in Radio Repair
LOCATED AT —
ROD ROGERS ORIENT ELECTRIC
Phone Gresham 759 Loop Hiway Orient Ore.

Bob's Little Plumber Says:



Bob Can Give You An Estimate It Won't Cost A Cent

BOB'S PLUMBING & HEATING

Phone 634

Sandy, Oregon

MAKE SURE YOUR HOUSE IS READY FOR

SUMMER and WINTER



Call J & J SHEET METAL Today

—: FREE ESTIMATES —:

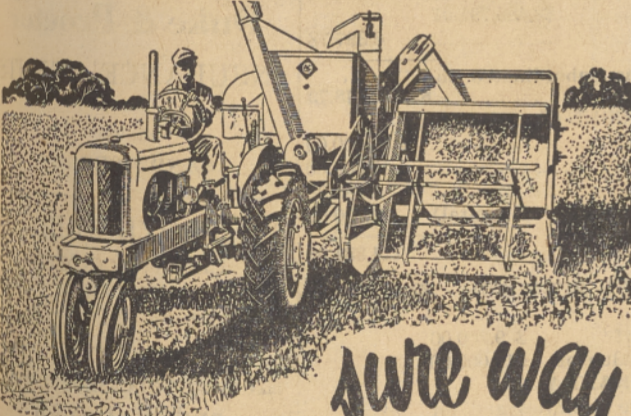
Roofing--Eaves--Specialty Work

J & J SHEET METAL
IN SANDY

Phone 271

Main Street

your own ALL-CROP Harvester



sure way
TO HARVEST SEEDS...

Get full returns from every acre of seed. With your own ALL-CROP Harvester, you are equipped to catch the crop at its peak and save more seed from every acre. These features mean outstanding performance in more than 100 different crops—including those you have to harvest.

- Header that combs the ground for short crops, reaches high for tall ones. Hydraulic control optional.
- Air Blast Separation as seed leaves cylinder, separates much of the seed from straw at this point.
- Full-Width Cylinder with rubber shelling contacts.
- Extra Threshing Capacity with oversize strawrack.
- Saw-Tooth Wind Control Valves give right flow of air for every cleaning problem.

Let us show you on your farm.

ALLIS-CHALMERS
SALES AND SERVICE

FARM TRACTOR CO.

Loop Highway at Boring Road

Phone 760

ABOUT THE FARM - - -

Notes by the Wayside—

Thrips In Clackamas Clover Need DDT Dusting Says Entomologist R. Every

By John J. Inskeep, County Agent
While we have no local experimental evidence to go on, preliminary surveys indicate desirability of dusting Clackamas county clover and lotus fields for seed production.



J. J. Inskeep

Entomologist Robert Every came up for an afternoon last week and gave Extension Agent Clive Cook and me a little education on the subject of insect pest infesting our legume seed fields. We found lygus bug, thrip and clover seed weevil in varying amounts in each field visited on the west side and near Macksburg and Molalla. Fields nearing maturity showed more of these pests than those just coming into blossom. White and ladino clover fields showed very heavy infestation.

It was pointed out by Every that the insect population builds up as seed maturity approaches. Damage had already started in Henry Kylo's Molalla white clover field, and Every recommended immediate dusting there. In Howard Smith's ladino clover field at Macksburg we found fewer insects, but Every believed that more would be found at dusting time. We also found lesser, but significant, infestation in lotus fields belonging to Elmer and Adolph Kruse, Frog Pond, and Lewis Stahlnecker, Carroll Creek.

As pointed out previously, we have little local experimental evidence on benefits of dusting here. But we do know that dusting, with excellent results, has been followed in several other states and in Jackson and Jefferson counties of this state. Several growers near St. Paul, in Marion county, report excellent results from dusting in 1949.

We have additional evidence. Seed from our fields show evidence of insect damage, and we know that we have infestation in quantity. Here are control recommendations: Dust with 20 to 30 pounds of 5 per cent DDT per acre when about 20 per cent of the seed heads in white, alsike and ladino fields have turned brown. Dusts with higher DDT content may damage the bee population.

It is important also to dust early in the morning before bees have left their hives. No damage has been reported when these directions have been followed out.

This means that some white and alsike fields are far enough advanced to dust now.

Ladino clover and lotus fields can be dusted about the tenth to fifteenth of July. In fact, it may be a good idea to dust lotus fields now and to follow with a second application in about three weeks from the time this article appears.

It is probable that we shall also recommend dusting red clover seed fields. This will be determined as the season progresses, and due notice will be given in this column.

"Straw from dusted fields may be fed to meat animals," Every says, "but we do not recommend dusted straw for producing cows as some DDT may be found in milk when so fed. No injury

Anyway, our new farm program seems well adapted to our needs, and many from other states and nations find it interesting.

As visitors we have had Andrew Christie and his wife, Kingston, New Hampshire. He is president of the very important International Baby Chick Association. The Christies and H. G. Mattoon, Norberth, president of the Pennsylvania Forestry Association, were guests of Mr. and Mrs. Ambrose Brownell. We accompanied them for a look at Clackamas county's berry and grassland agriculture.

Arriving at the Harold Bushue berry farm, Boring, we found no one at home and proceeded to do a little trespassing in the berry patch near the house. Harold caught us in the act and insisted that we pick a few boxes for the visitors to eat prior to catching the evening train east.

It is difficult for us Oregonians, accustomed to excellent fruit, to realize the thrill experienced by easterners who stand in one of our fine fields where they can pick the best berries that grow. Harold Bushue pointed out to H. G. Mattoon that much of his crop is processed and purchased by Philadelphia preservers right in the latter's back yard.

has been reported, but it is safer not to feed it.

"We also think it useless to make comparisons by dusting a portion of a field, leaving another portion untreated. These insects spread too rapidly from one portion of the field to another for accurate comparisons."

East Calls Us Wierd

A Clackamas county resident who recently called on the editor of a national farm magazine published in the East for the purpose of selling an article on this county was told, "You have a wierd and fantastic agriculture, and we are not interested." Guess maybe we do, at that.

Fir Logs Wanted At Good Prices

We give full scale and pay cash each week for Old Growth Yellow Fir Peellers delivered to our plant in Gresham.

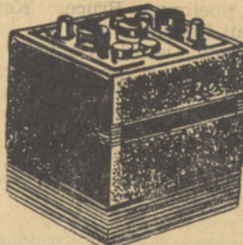
OLYMPIC MFG. CO.

Division, The Dean Co.

Gresham, Oregon

PHONES: Gresham 265, KENwood 5223

EARLY SUMMER SPECIAL



Guaranteed For 24 Months

TRI-STATE BATTERIES
For One Month \$11.00
With Old Battery

Mechanic On Duty

SANDY OIL COMPANY

Telephone 471

Loop Highway

Let Us Provide 1950 Performance

Save Fuel! Save Money!

OIL HEAT is Best!

Call or Come in Soon for Complete Information



GRESHAM SEED & FEED CO., Inc.
Second Street Phone Gresham 284

Geo. S. Koch Motor Company

Pontiac-GMC

SALES and SERVICE

It's Time NOW To SERVICE To MAINTAIN To REBUILD YOUR CAR OR TRUCK

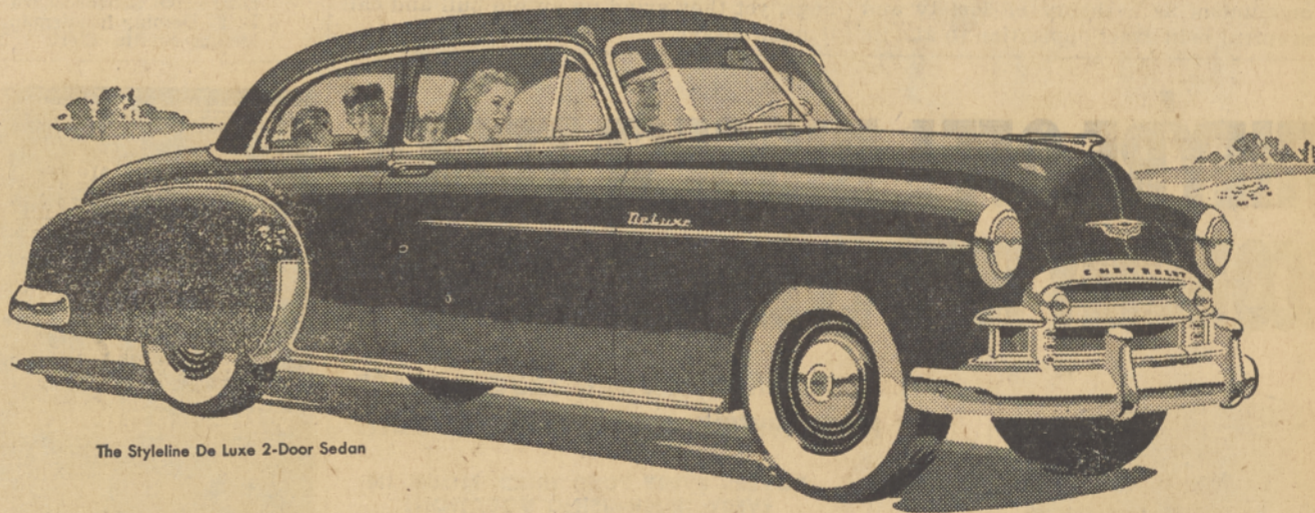
Let Us Make Your Fine Car FINER

Geo. S. Koch Motor Co.

Pontiac and GMC Sales and Service

Phone 431

Sandy, Ore.



The Styleline De Luxe 2-Door Sedan

Drive home the facts!



First and Finest for thrills and thrift

Chevrolet brings you the finest combination of thrills and thrift... with its new 105-h.p. Valve-in-Head Engine*—most powerful in the entire low-price field—or its highly improved, more powerful standard Valve-in-Head Engine.



First and Finest for all-around safety at lowest cost

Only Chevrolet offers this five-fold protection: (1) Curved Windshield with Panoramic Visibility (2) Fisher Unisteel Body (3) Safety Plate Glass all around (4) Unitized Knee-Action Ride (5) Certi-Safe Hydraulic Brakes.



First and Finest for styling and comfort at lowest cost

Chevrolet's Style-Star Bodies by Fisher provide extra-wide form-fitting seats—extra-generous head, leg and elbow room—extra value in every detail of styling and comfort in this longest and heaviest low-priced car!



First and Finest for driving and riding ease at lowest cost

Only Chevrolet offers finest no-shift driving, with Powerglide Automatic Transmission and 105-h.p. Engine*... or finest standard driving, with highly improved standard Engine and Synchro-Mesh Transmission... at lowest cost.

Come in—drive a Chevrolet and you'll know why it's AMERICA'S BEST SELLER... AMERICA'S BEST BUY!

*Combination of Powerglide Automatic Transmission and 105-h.p. Engine optional on De Luxe models at extra cost.



BEESON CHEVROLET

Phone 681

On Mt. Hood Loop Highway

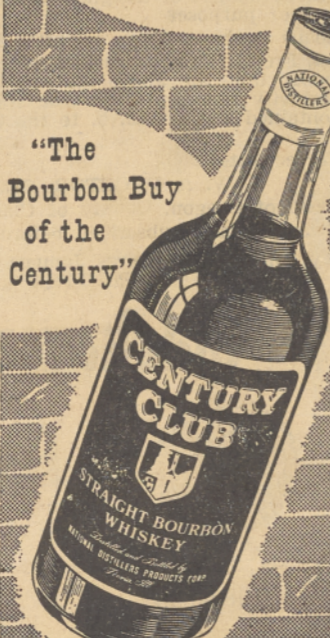
Sandy, Oregon

ENJOY THIS GREAT STRAIGHT BOURBON

4/5 Quart \$3.60

Pint \$2.25

"The Bourbon Buy of the Century"



Straight Bourbon Whiskey • 86 Proof National Distillers Products Corp., N. Y.