

Fuel OIL

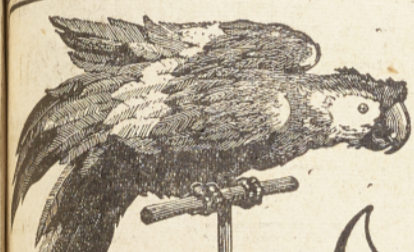
Stove Oil and Furnace Oil



Prompt Courteous Service

Phone Gresham 5400

GRESHAM SEED & FEED CO. Inc.



CORBY'S

... A GRAND OLD NAME IN CANADA

AN AMERICAN BLENDED WHISKEY

4/5 QUART	PINT
\$3.35	\$2.10

CORBY'S RESERVE BLENDED WHISKEY
86 PROOF • 68.4% GRAIN NEUTRAL SPIRITS
JAS. BARCLAY & CO. LIMITED • PEORIA, ILLINOIS

Notes by the Wayside— Methoxychlor May Replace DDT As Harmless General Insecticide

By John J. Inskeep, County Agent
DDT may soon be replaced partially at least, by a new insecticide with the outlandish name Methoxychlor. The name is of importance to scientists for it indicates something of the chemical makeup of the material. To the user it is of little importance for Methoxychlor will undoubtedly be sold under various simple trade names.

Methoxychlor seems to have all of the good characteristics of DDT without the latter's shortcomings. For instance, the new one is just as lethal to insects but only one twentieth as toxic to warm blooded animals. Health inspectors frown on the use of DDT for fly control around a dairy barn for fear of possible milk contamination, but Methoxychlor should make a near perfect substitute. Any way that is the way we hear it and directions for its use will soon be on the way.

While DDT readily kills twelve spotted beetle attacking cucumber, squash, and bean plants, the plants are also damaged by the insecticide. Last year Extension Agent, Leon Garoian was sent a trial sample of Methoxychlor by an Eastern manufacturer. About that time, Stan Skoko called up saying that twelve spotted beetles were raising hob with his new planting of squash. So Methoxychlor was first tried in Clackamas County on the Skoko farm and with excellent results.

Subsequently Garoian made dusting trials on beans, cucumbers and tomatoes with outstanding results. The operation killed the bugs without damage to the plants.

A clear-cut demonstration of the value of correct phosphate placement is to be found on Jack Headrick's farm just off the Highland Road. Last fall Jack applied TVA high grade phosphate to a spring planting of red clover. On adjoining strips he made surface and sub-surface applications. No clover remains in check strips, nor where the fertilizer was used as a top dressing, but a perfect stand remains where phosphate was placed in bands three inches under the surface.

"We didn't have a sub-surface distributor" Jack reports, "so we put her through the grain drill. I drove the tractor and Bill rode the drill so he could be sure that the fertilizer was feeding through in good shape. I wouldn't recommend this method as a regular procedure but we did place the fertilizer where we wanted it for experimental purposes and we have the results to show for our pains."

Grange Social Meeting Success; Established 1902

By Alice Hickey
Those who attended Brightwood Grange social meeting last Saturday night report a gala occasion. The visitors, Garfield Grange of Estacada, came by chartered Greyhound bus, and there were 27 light-hearted people who had planned on entertaining and being entertained. Sister Anders, the Garfield Chaplain, is a charter member. The Grange was organized in 1902. Sister Davis, the master, has been a member for 45 years, and six months ago she married Mr. Davis who took Grange vows 48 years ago, making a total of 116 years for three members.

Other officers were Bro. Poppins, overseer, and Sister Grover, lecturer, who presented an exceptionally fine program. The talk on accidents and their prevention and the origin of Easter was educational and interesting, as was the Easter hat parade, with hats decorated with flowers, ink spots, nuts and vegetable. Bro. and Sister Armstrong, of Hoquiam-Outlook Grange were among the Estacada visitors. The Hill Billy orchestra of Brightwood Grange was augmented by the charming presence of Charles Hickey who played guitar and sang with the orchestra which consists of Dorothy Smothers, pianist, Charles Dunham, harp guitar and Al Rounds, mandolin. Mrs. Payne, accordion player, could not attend. Also conspicuous by her absence was the Post News reporter.

Dancing filled out the evening which was thoroughly enjoyed by all who attended, and is voted the best meeting our Grange ever had. Mr. Ferguson put a finishing touch to the entertainment by appearing in apron and cap from the kitchen, something the Home Economics chairman will remember.

Home Efficiency Talk Given for Extension Unit

The Brightwood Extension Unit held a meeting on April 14. Miss Taylor, county agent, talked and demonstrated "Saving Steps in the Kitchen." Her talk was on ideas for improving their own kitchens.

There were 19 seated at a luncheon table decorated with spring flowers, and spread with eats prepared and served by the hostesses Mrs. Landis, Mrs. Beauvais, and Mrs. Machley.

Election of officers was held. Mrs. Langdon was elected for chairman, Mrs. Jenkins for vice-chairman, Mrs. Alt, secretary and Mrs. Petri as treasurer.

Articles finished by the 4-H group were exhibited and judged. Ellen Mitchell took first place with LuRu Landis as alternate to receive the scholarship to Corvallis summer school sponsored by the unit. These young people received the highest praise from the unit for the work they have done.

Seven of the Brightwood Unit members attended the Spring Festival held at Oregon City, and all report they had a "wonderful" time.

Five Homes Near Thursday's Fires

By Mrs. Charles E. Ballou
CHERRYVILLE—A fern and brush fire burned over about two miles in north Cherryville last Thursday. There were five homes that would have been burned if someone hadn't been there to protect them. One man lost about 15 cords of wood.

With warm weather coming on several Cherryvillians took drives last week. Mr. and Mrs. Curt Wilhelm drove to Salem and enjoyed seeing all the blossoming trees. Mr. and Mrs. Sylvester Amundsen drove to Central Oregon and reported very fine weather over there.

Mr. and Mrs. L. O. Hadley of Silverton visited the Orvid Martin home Easter Sunday and they all drove to Mt. Hood in the afternoon.

Mr. and Mrs. Ed Ballou and son, Aaron, enjoyed a family gathering at the Arnold Anderson home in Estacada Sunday.

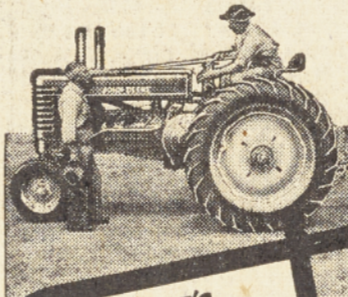
Sandy Grange 4-H Benefit Scheduled

The Sandy Grange will hold a 4-H benefit program at the Grange hall in the old Kelso school Saturday, April 30 at 8 p.m. There will be a pie social and a food sale following a vaudeville program presented by boys and girls of the 4-H club, The Cowpokes.

Those appearing on the program and their offerings are: Bill MacDonald, a recitation; a 4-H club skit in which all the members of the Cowpokes will participate; Richard and Rodney Zeimer in a guitar and banjo rendition of "Springtime in the Rockies" and "She'll be Coming Around the Mountain"; singing by Udine Urban; and a piano solo by Theola Miller.

One of the highlights of the program will be a tap-dancing and baton whirling exhibition by Norma Spath followed by an accordion solo by Barbara Beeler. Dale Chase will give a recitation of "Nettle's Thanksgiving Visit." An electric steel guitar solo will be given by Darlene Skeslein accompanied by Carol Skeslein on the spanish guitar and Shirley Hornback on the piano.

Sheila Chase and Wanda Lee will sing and Sharon McCormick will give a recitation followed by a summarizing talk by Mr. William F. MacDonald. Those in charge of the program are Mrs. John J. Dunn, Mrs. William F. MacDonald, and Mrs. Marcus L. Lee.



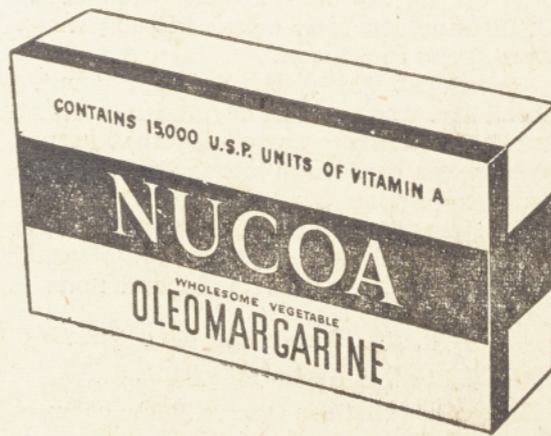
THERE'S EVERY REASON WHY YOUR NEXT TRACTOR SHOULD BE A JOHN DEERE!

Until you see them, you've no idea how much more these first really new post-war tractors—the John Deere "A" and "B"—offer you in new performance... new economy... new ease of handling... new and greater value than ever before! Come in soon and let us give you the proof.

HESEL IMPLEM'T CO.
Parts Phone 229 Service
Gresham, Oregon 2

JOHN DEERE Quality Farm Equipment and Service

Save at Sandy Mercantile Company



Here's real savings. Nucoa, that nutritious oleomargarine that tastes so good. Better take home a couple of packages and bowl mix it. You'll save both time and money. You'll find plenty of other dollar-stretching bargains this Friday and Saturday at SANDY MERCANTILE CO. where you can depend on quality foods at lowest prices, always.

lb. 25¢

BREAD

Mity Nice 1 1/2 lb. loaf 18c

Best Foods MAYONNAISE 39c
Pint Jar



PORK & BEANS Hunt's No. 2 tin 10¢

Granulated SUGAR C & H lb. 10¢

Blue Plate OKRA No. 2 tin 10¢

PEACHES Hill Top No. 2 1/2 tin 23¢

Grapefruit Sections Russell's 2s 2 for 27¢

Elastic STARCH 10c Swift's CLEANSER 10c

Cascade Paper NAPKINS 10c Scott TISSUE roll 10c

BOOK MATCHES carton 2 for 23¢

FRESH - CRISP - PRODUCE



CARROTS 2 bchs. 15¢

Nice Large Heads LETTUCE each 10¢

13c

Bath Size

RADISHES 2 bchs. 9¢

Green Onions 2 bchs. 9¢

Featuring Nationally Famous SWIFT'S Meats

Lean Blade Cuts PORK Shoulder STEAKS lb. 49¢

Boston Butt Cuts PORK Shoulder ROAST lb. 49¢

Swift's Oriole BACON piece or slice . . lb. 49¢

Swift's Silver Leaf LARD 3 lbs. 49¢

Swift's Ariel BACON BUTTS lb. 22 1/2¢

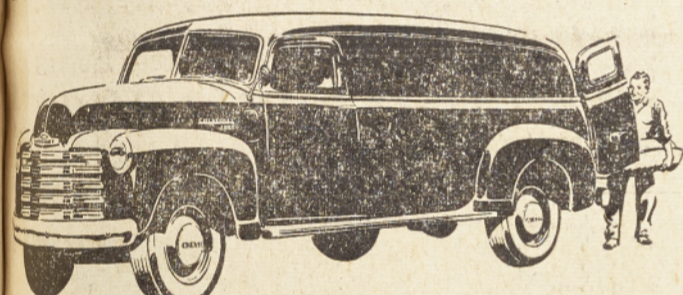
SANDY MERCANTILE CO.

A Good Independent Store

Phone 81

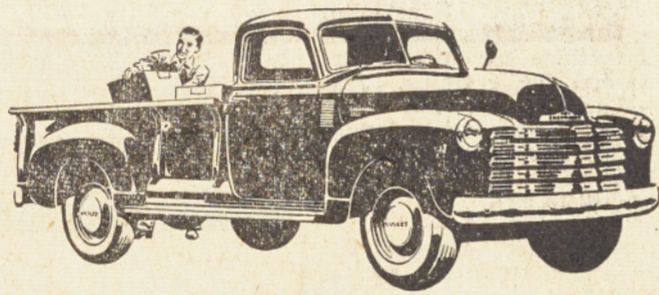
Loop Highway

Sandy, Oregon



MEDIUM-DUTY PANEL

Model 3805—137-inch wheelbase, Maximum G.V.W. 6700 lb. Also available in light-duty Model 3105—116-inch wheelbase, Maximum G.V.W. 4600 lb.



MEDIUM-DUTY PICKUP

Model 3604—125 1/4-inch wheelbase, Maximum G.V.W. 5800 lb. Other models available: 3804—137-inch wheelbase, Maximum G.V.W. 6700 lb.; 3104—116-inch wheelbase, Maximum G.V.W. 4600 lb.

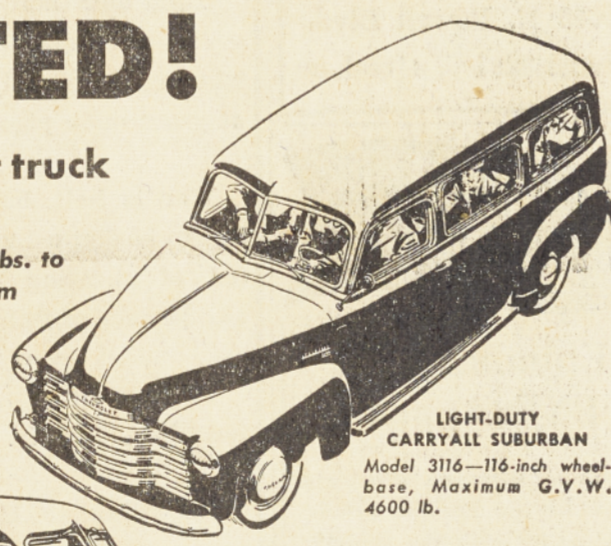
TRANSPORTATION UNLIMITED!

There's a Chevrolet truck for every job

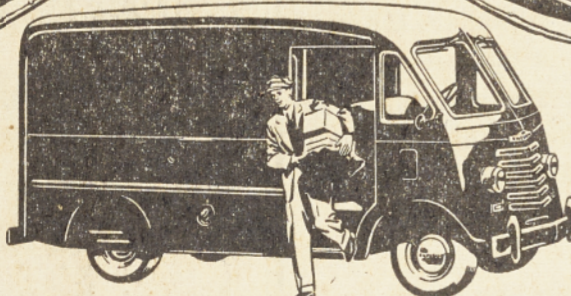
with capacities from 4,000 lbs. to 16,000 lbs. G.V.W.—from smart delivery units to massive heavy-duty models.



LIGHT-DUTY CANOPY EXPRESS
Model 3107—116-inch wheelbase, Maximum G.V.W. 4600 lbs. Also available in Medium-Duty Model 3807—137-inch wheelbase, Maximum G.V.W. 6700 lbs.



LIGHT-DUTY CARRYALL SUBURBAN
Model 3116—116-inch wheelbase, Maximum G.V.W. 4600 lb.



FORWARD-CONTROL CHASSIS

Model 3742—125 1/4-inch wheelbase, Maximum G.V.W. 7000 lb. Also available in Model 3942—137-inch wheelbase, Maximum G.V.W. 10,000 lb. Package Delivery type Bodies suitable for mounting on the Forward-Control Chassis are supplied by many reputable manufacturers.

America's Biggest Sellers . . . Greatest Servers

You'll share the record-high regard that America holds for these Advance-Design Chevrolet trucks. You'll share it the instant you drive them. For then and there you'll discover the deep-down durable quality, the outstanding performance and the rugged reliability that make them America's

favorites . . . more Chevrolet Trucks in use than any other make. Drive them and see. Drive them and remember that only Chevrolet brings you this fullest measure of finest value together with the world's greatest economy. For Chevrolet trucks alone have 3-WAY THRIFT—the triple economy of low-cost operation, low-cost upkeep and the lowest list prices in the entire truck field!

CHEVROLET TRUCKS

Beeson Chevrolet Company

Phone 681

Loop and Main

Sandy, Oregon