



DAWN OF A NEW DAY

... and a new year. Hopes rise with the sun when its golden glow gilds all our prospects. May all the promises of 1948 be fulfilled. This is our wish for you.

SCALES

Phone 591

Sandy, Oregon

Notes by the Wayside— Fir Sawdust Can Be Used in Home Gardens, as Litter in Dairy Barns

By John J. Inskeep, County Farm Agent
Fir sawdust is not worth hauling so far as contained fertilizer elements are concerned, according to Arthur King, extension specialist in soils.

We just wonder if sawdust, so reinforced, would not be a good substitute for peat moss, and much less costly. Kind adds, "Sawdust could and should be more widely used as litter in dairy and stock barns and poultry houses. It will absorb as much material, or more, than grain straw and is easily handled. When used in combination with manure enough extra plant food is added to the soil so that the depressing effect from the high carbon content of the sawdust is not noticed."

Unknown Plants Named
For some reason or reasons with which we are not fully acquainted, the state of Oregon appears to be a fertile field in which there appear many new or unknown weeds, grasses and other plants each year. Some of these can be identified at county extension offices. Others are identified by weed specialists at Oregon state college, but 7,500 unknown specimens appear for identification each year at the office of Miss Helen Gilkey, Oregon State botanist.

We always thought that it was Miss Gilkey's duty to make these identifications, but have learned that she does all of this work

after hours. In addition, she travels afield each year on her own for the purpose of gathering new specimens.

This situation explains the delay occasioned each year in receiving identification of specimens sent in. A well equipped laboratory can be expected to identify about ten thousand specimens a year. Says Miss Gilkey, "Plants from all over the world appear in Oregon and many of them have to be sent to the U. S. Department of Agriculture because we do not have all of the facilities here for making correct classification."

Special Woods Wanted
After receiving a letter from a forest products corporation in Portland saying that it is in the market for maple burls, we talked to Project Forester Al Parker who tells us that a brisk market now exists for a number of specialty forest products grown in Clackamas county. Included in these are Oregon black walnut for gun stocks, maple and Madrona burls, hop poles from thinnings, alder for paper plugs, cottonwood peeler logs for plywood and excelsior, cascara bark and even sword ferns.

Prices for burls vary from \$70 to \$110 a ton. These are considered very attractive and reflect a new foreign demand. Parker reminds us, however, that harvesters of these products should be sure of specification requirements prior to cutting. Incorrect cutting may ruin an otherwise very valuable product. As a matter of general information, a burl two feet by two feet by three feet will weigh approximately 450 pounds. Burls must not contain plain grain or bark.

Not too long ago a resident of Oregon City found it necessary to cut down a black walnut tree which he was about to make up into cordwood. In fact, he had already cut it into eight foot lengths when a neighbor advised him to see Parker about a special market. The result was that he sold two eight foot lengths for fifty dollars and had plenty of cordwood left. Parker says, however, that gun stock material should be cut in six, nine, or twelve foot lengths and, if sawed, widths should not be less than three inches. Normal hardwood logs are cut in lengths of eight feet.

A new bulletin concerning harvesting and use of these products will soon be issued by the Oregon Extension Service. In the meantime, Parker has issued a circular on instruction including possible purchasers. But regardless of written general instructions, sellers are advised to contact marketing agencies prior to harvest. These purchasing agencies have definite demands to fill and those who follow their harvest instructions may expect to find a better market.

Last week Hollis Ottaway called attention, in this column, to

the fact that 395 samples of soil were brought into the office for testing for limestone requirements and that the average requirement was 1.1 tons per acre. In 1946 we tested 253 samples which showed the same average requirement. This testing is just another routine office task which is increasing in proportion, but we think it is worth while and have now added equipment for making tests for phosphate requirements.

Ottaway is in charge of soil testing and, since he must spend considerable time in the field, a period of several days may elapse between time of receiving samples and date of test. Samples should be dried before bringing them to the office. Otherwise considerable additional time will be lost in the process of drying and we have very limited laboratory facilities for this purpose.

After a field has been plowed, disked, and harrowed several years, there will be little acidity variation in the first eight or ten inches of soil. With the possibility that a variation may occur, the best soil sample is taken from the side of a ten-inch hole. Cut a small slice (total sample is one handful) from the side of the hole and allow to dry before bringing in for the test. A test from each field is desirable, and if liming practices vary in one large field, a second test might be desirable here also. Large fields with varying soil types may require additional samples.

'Calcutta' Comes To Sandy Theatre's Screen on Sunday

Blasting away from the screen of the Sandy Theatre is Randolph Scott in the two-gun western thriller "Gunfighters," which can be seen this Friday and Saturday nights. Scott is supported in the leading role by Barbara Britton, Bruce Cabot and Dorothy Hart.

The musical comedy "Orchestra Wives" is an added attraction of the double feature now playing at the Sandy Theatre. It features Glenn Miller and his orchestra in a story of a band on the road.

Chapter 13 of "Jack Armstrong, The All-American Boy" with a cartoon and news completes the bill.

Ladd in "Calcutta"
Alan Ladd, Gail Russell and William Bendix star in the murder-mystery "Calcutta" which will appear at the Sandy Theatre Sunday, Monday, Tuesday and Wednesday, Jan. 4, 5, 6, and 7.

In "Calcutta," Ladd and Bendix play a couple of adventuresome pilots who fly the "hump" from India to China. One of their buddies is strangled and the two set out to find the killers. Somewhere along the line Ladd runs into Gail Russell.

"The Trouble With Women" stars Ray Milland, Brian Donlevy and Teresa Wright. The film is the companion feature to "Calcutta." A technicolor musical parade and news are also featured on the bill.

'Christmas Eve' To Open Sunday At The Sunset

"Lured," with George Sanders and Lucille Ball cast in the leading roles, and "Tuxedo Junction," starring the Weaver Brothers and Elviry are playing at the Sunset Theatre this Thursday, Friday and Saturday, Jan. 1, 2, and 3.

"Christmas Eve" Opens Sunday
"Christmas Eve" and "Sage Brush Trail" open Sunday at the Sunset. The double feature will be shown Sunday, Monday and Tuesday, Jan. 4, 5 and 6.

George Raft, George Brent and Randolph Scott are the stars of "Christmas Eve," while John Wayne plays the role of a hard-riding cowboy in the western saga, "Sage Brush Trail."

Sanders Stars
George Sanders is cast in the leading role of "Private Affairs of Bell Ami" which comes to the Sunset Theatre on Wednesday, Jan. 7, only.

Angla Lansbury is co-starred with Sanders. "Banjo" with Sharyn Moffett is the second feature which can be seen at the Sunset Theatre on Wednesday.

Firm Establishes Outlet in East

Establishment of a retail lumber yard at Wilmington, Ohio, as an outlet for lumber products was announced last week by Harry Barger of Barger Mills Inc., upon his return from a two weeks business trip in the east.

Mr. Barger stated that the yard at Wilmington was the first of several eastern retail yards the company plans to establish in the near future. He expressed the belief that this expansion program would result in more efficient distribution of the firm's lumber products, make possible better planning of operations to reduce seasonal slack periods, and stabilize the company's market in the future.

SANDY THEATRE

Phone 691

Loop Highway

THURS., FRI., SAT., JAN. 1 - 2 - 3



Also

Geo. Montgomery, Ann Rutherford, Glenn Miller and His Band in

'ORCHESTRA WIVES'

A musical comedy of the "catty" wives of the men in his orchestra.

PLUS CARTOON AND NEWS

CHAPTER NO. 13 - JACK ARMSTRONG

SUN., MON., TUES., WED., JAN. 4 - 5 - 6 - 7



Also

Ray Milland, Brian Donlevy, Teresa Wright in

'THE TROUBLE WITH WOMEN'

He was a professor of psychology, but watch out when the mild-mannered worm turns and becomes a battling he-man.

Technicolor MUSICAL PARADE and NEWS

SHOW HOURS

Continuous Sundays from 2:00 p. m.
Week days show starts 7:00 p. m.
Saturdays show starts 6:00 p. m.

To one and all
A HAPPY NEW YEAR 1948

... and may your list of friends grow into a long parade this year.



Watch for Our Gigantic 9c Sale

Mills Bros. Hardware Store

Phone 651 Loop Highway Sandy, Oregon

WARMS YOUR HEART!



TUXEDO JUNCTION

WEAVER BROTHERS and ELVIRY
THURSTON HALL
FRANKIE DARRO
SALLY PAYNE
CLAYTON MOORE
LORNA GRAY
and THE LITTLE VAGABONDS

SUNSET THEATRE

Sandy, Oregon

Thur., Fri., Sat., Jan. 1-2-3

'LURED'

with George Sanders and Lucille Ball

—ALSO—

'TUXEDO JUNCTION'

Weaver Bros. and Elviry

Sun., Mon., and Tues., Jan 4-5-6

'CHRISTMAS EVE'

George Raft, George Brent and Randolph Scott

—ALSO—

'SAGE-BRUSH TRAIL'

John Wayne — He wrote the code of justice with a blazing six gun.

Wed., Jan 7

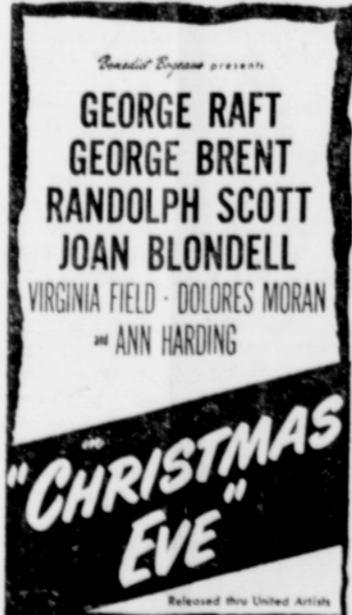
'PRIVATE AFFAIRS OF BEL AMI'

George Sanders and Angela Lansbury

—ALSO—

'BANJO'

with Sharyn Moffett



GRESHAM THEATRE

Gresham, Oregon

Thurs., Fri., Sat., Jan. 1, 2, 3

Show starts at 2 p. m. New Years Day.

Robert Mitchem, Robert Young

'CROSSFIRE'

—Also—

John Wayne and Susan Hayward in

'The Fighting Seabees'

News and Cartoon

Sun., Mon., Tues., Jan. 4, 5, 6

Robert Paige and Noreen Nash in

'RED STALLION'

—Also—

Don Barry and Lynn Roberts in

'THAT'S MY GAL'

—Also—

News and Cartoon

Wednesday, Jan. 7

'JEWELS OF BRANDENBURG'

—Also—

Second Feature