

STATE NEWS

The twelve most common driving faults reported in this country have been determined by a nation-wide survey conducted by the Automotive Safety Foundation, results of which have been received in Oregon by the State Traffic Safety Division.

Heading this list is driving too fast for conditions with poor judgment in passing or following running a close second. Following is the list of driving faults as determined by the survey:

1: Driving too fast for conditions.

PEACHES & CREAM

Purchase Plenty of Fresh Cold Milk and Cream from your Local Mt. Hood Dairy.

Raw and Pasteurized
Accept No Substitute



Adolph Amstad Ph. Sandy 293

tions. Density of traffic volume, pedestrians, frequency of intersections, road surfaces, weather and sight distances are controlling factors in determining a safe speed.

2: Poor judgment in passing or following. Following a car too closely to stop within the distance ahead, passing on curves or hills, starting to pass with insufficient distance ahead.

3: Failure to signal. Other drivers taken by surprise and unable to avoid a collision.

4: Inattention. Driving is a full-time job. Looking at scenery, talking to a passenger, lighting a cigarette, all may cause accidents.

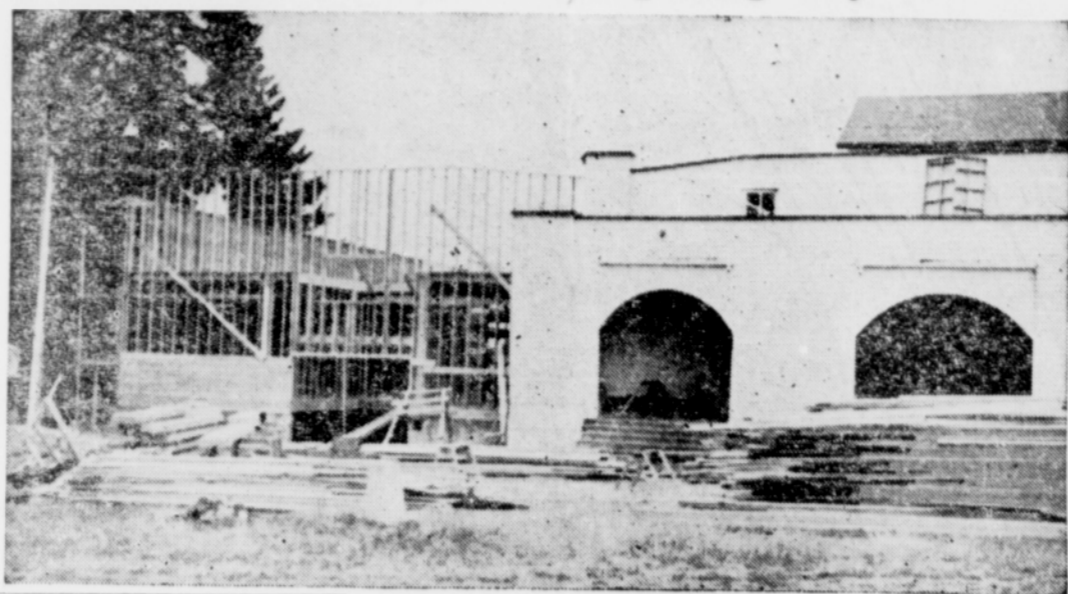
5: Improper turning. Making left turns from right lanes and vice versa frequently result in accidents.

Bonded Carriers Greenwood Truck Line

Serving Mt. Hood Loop

Portland, Timberline Lodge and Way Points
Washington & Oregon Permits
Wemme, call Long Distance
Portland Phone BEacon 8127
Terminal 716 N. W. Irving

County Fair's New \$14,200 Pavilion Annex Will Be Dedicated on Opening Day



6. Poor use of headlights. Over-driving illuminating beam and failure to use lower beam when meeting cars at night.

7. Lack of courtesy. Failing to yield right-of-way, particularly to pedestrians at intersections.

8. Poorly maintained vehicle. Improper adjustment of brakes, lights and other safety equipment.

9. Weaving in traffic. Driving on the wrong side of the road or in the wrong lane, unnecessary changes in direction.

10. Driving "below par." Fatigue, illness or drinking.

11. False confidence. Belief in ability to react instantaneously, to "stop on a dime."

12. Horn driving. Too much noise and too little skill. Attempt

Being rushed to completion so that it may be in use at the 35th annual Clackamas County Fair August 27 to 30 is this new \$14,200 annex to the pavilion on the fairgrounds at Canby.

Dedication of the new 48 by 92 foot structure is planned for Wednesday evening, August 27, with the three members of the Fair board—President H. H. Chindgren, Secretary John P. Telford and Director H. N. Everhart—acting as hosts at a 6 o'clock dinner.

Among special guests being invited to the dedication are Governor Charles A. Sprague, Earl R. Cooley, state supervisor of vocational agriculture, and Ralph Morgan, his assistant; H. C. Seymour, state 4-H club leader; L. J. Allen and Miss Helen Cowgill, assistants; members of the county court, vocational agriculture instructors of the county, the 4-H club agent, officers of the 4-H Local Leaders' league, and Lester Pelton of Milwaukie, assistant superintendent of WPA, who is

directing construction of the new wing.

The dinner will be served in the dining room which, with complete kitchen facilities for banquets, will be housed in the full basement of the annex.

The main floor will be used for shop and project exhibits of the five county chapters of Future Farmers of America, the Parent-Teacher council's lounge and children's nursery, and for additional grange and commercial exhibits.

The mezzanine floor will provide space for 4-H club exhibits, and in the east end will be a small auditorium, seating 35 or 40 people, with a stage equipped for 4-H home economics demonstrations. The "dollar" dinner contest will be held in this auditorium.

Materials for the new building were bought through a \$3,200 appropriation made by the Clackamas county court, and \$11,000 worth of labor for the project is being provided by the Works Progress Administration.

to clear path by blasts of horn, rather than yielding right-of-way or waiting till way is clear.

WISE SAYINGS OF BENJAMIN FRANKLIN

The doors of wisdom are never shut.

You may delay but time will not.

God helps them that help themselves.

Half the truth is often a great lie.

What you would seem to be, be really.

Who pleasure gives shall joy receive.

Do not do that which you would not have known.

If you'd have it done, go; if not, send.

Look before or you'll find yourself behind.

Employ thy time well if thou meanest to gain leisure.

Blame-all and praise-all are two blockheads.

He that falls in love with himself will have no rivals.

Do good to thy friend to keep

35th ANNUAL
MULTNOMAH COUNTY FAIR
GRESHAM, OREGON
OPENS AUG. 18th
FOR THE TIME OF YOUR LIFE!
15 SENSATIONAL ACTS!
Every Afternoon at 2 Grand Seats 25c
GENERAL ADMISSION 25c

PARI-MUTUEL RACING
WEEK NIGHTS under powerful lights
BLUE-BLOODED LIVESTOCK - POULTRY AGRICULTURE - HOME ARTS
4-H CLUBS - FLOWER SHOW featuring NORTHWEST GLADIOLUS SHOW

Duke & Proctor
INSURANCE AGENTS
Fire, Auto, Burglary, Plate Glass, Liability, Surety, Health, Accident, Life
Telephone 71
SANDY, OREGON

him; to thy enemy to gain him. Useful attainments in your minority will procure riches in maturity. If you would reap praise you must sow the seeds, gentle words and useful deeds.

KELSO GARAGE
BLACKSMITHING
By JOE BLONWICK Oregon
Kelso, Oregon

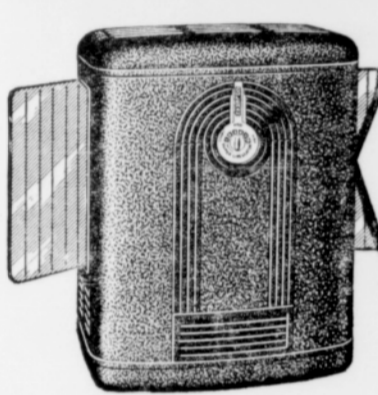
R-A-D-I-O
SALES and SERVICE
Wiring & Electrical Appliances
RHODODENDRON TELEPHONE COMPANY
Frank Christensen, Jr.
Ph. Rhododendron 100; Sandy 6x

Clifford G. Schneider
ATTORNEY
2035-5 Withrow Building
Gresham, Ore. Gresham 4921

Jantzen BEACH PARK
DANCE • SWIM • PICNIC AND PLAY

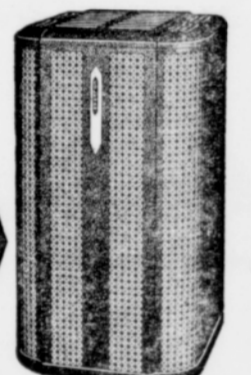
SANDY TRUCK LINE
DAILY FREIGHT SERVICE
Moving, General Hauling
Sandy 65 Portland EA 9131

Special! FURNACE TYPE HEAT with Coleman OIL HEATERS



Here's the Nationally Advertised Coleman that heats your house like A FURNACE!

...a complete multiple-room heating unit that circulates warm air through your house like a furnace—yet sells in the low price range of ordinary room heaters!



This Heater: RADIATES! CIRCULATES! BOTH at once!

Famous, low-cost, efficient Coleman Heaters give 2-way heating service. Real bargains in winter comfort for the whole family!

See the Amazing Coleman Complete with Blower at Only \$49.90

PRICED AS LOW AS \$39.95

A. W. METZGER & CO.
Store Phone 234 GRESHAM, OREGON Feed Mill Phone 444

A REAL TIRE SALE!

PENNSYLVANIA STANDARD

LOW PRICES - FULLY GUARANTEED LONG MILEAGE

5.50-17
6.00-16

NO WONDER ZENITH IS SO POPULAR IN OUR HOUSE!

FOR ONLY THE 1942 **ZENITH** HAS ALL THIS!

- Radiorgan
- Rotor Wavemagnet
- Automatic tuning
- Concert master Speaker
- 3 gang condenser
- Short wave reception
- Big Black Dial
- Outer Circle tuned R. F.

AMERICA'S GREATEST RADIO VALUE
Compare this tremendous value against all others!

IT'S EASY TO OWN ON OUR BUDGET PLAN
Only \$64.95

Model 6-5-656—We want you to see and hear this powerful radio today. It offers you real, honest-to-goodness value for your radio dollar. New quality features inside and out. 6 powerful tubes including rectifier. Its tone will delight you.

GRAY-DAVIS GARAGE
SANDY, OREGON FRED WHITFIELD, Prop. PHONE 261

FRANK CHRISTENSEN, Jr.
Phone Rhododendron 100 R.E.A. Office Sandy 551