

# This Week IN WASHINGTON

Washington.— A bargain with Great Britain, whereby that nation would increase purchases of surplus American farm products as partial compensation for the United States giving full support to the British war program, is being urged by congressmen from rural areas.

Farm groups, which are backing this proposal, point out that exports of farm products have fallen off alarmingly and that the lend-lease bill offers an opportunity to make a deal to regain the lost British market.

The farm representatives are also complaining that great Brit-

ain is buying farm products from other countries—cotton from Brazil and tobacco from Turkey—but is confining its purchases here to munitions.

Last year, government experts estimate, U. S. exports of cotton fell off 75 per cent, of wheat over 50 per cent, and that the decrease in exports of tobacco, fruit and other products were equally drastic. Surplus crops have therefore become a more serious problem than ever.

### Question Turns to Next Step

When all doubt ended last week as to passage of the lend-lease bill, discussions here turned to what will happen next. Those discussions revolve around the questions of how long we can keep out of actual war, what new measures will be taken to speed up production of planes and other needed equipment and what methods will be used to meet the huge expense that this program will incur.

It is feared that the answers to these problems will involve more

## Commotion In the Rear



quabbling and ill feeling than the lend-lease bill itself, since many of the Republicans who opposed that bill did so because they didn't want to give Mr. Roosevelt "dictatorial" powers—not because they were opposed to full aid to England.

The revenue and defense production programs, however, are more entirely domestic situations—and the Republicans have a strong club to back up their opinions on these measures—namely, the business leaders who are called upon to produce the implements of war. On the other hand, the administration feels it is necessary to give labor the best break possible.

The administration may feel that it is playing ball with big business by placing business leaders in many key positions in the defense program, but it is evident that many business men don't agree. Speaking in behalf of the National Association of Manufacturers, James Preston, Washington columnist, refers to gov-

ernment "plotters" who are "smiping at business men" and says, "If the smiping continues, it wouldn't surprise many in Washington to see a whole group of business men tell the President that unless the firing ceases they will pack up their bags—and go home."

### Rough Road Ahead

It is expected that, unless some super-plan is thought up to make peace between the administration, business and labor, the defense program is going to travel a rough road. Unfounded reports that Wendell Willkie might head the American Federation of Labor is an example of the type of move which might be taken to improve the situation.

The new tax program, which will come up this month, is certain to put business on guard, ready to start battling all tax suggestions which would further reduce profits. It is expected, however, that congress will try to spread taxes over all wage-earners rather than raise funds by new "soak business" or "soak the rich" levies, and that efforts also will be made to do much of the necessary borrowing from the public at large.

Informants close to the treasury department say that it is considered essential that much of the increased national purchasing power, resulting from the defense program, be loaned back to the government, or price inflation will follow. They point out that a big public demand for automobiles, and other luxuries people would buy as their incomes increase, would mean that industries now doing defense work would not be able to supply the demands of the public. That would send prices sky-rocketing. Therefore, the government will attempt to get the public to use its increased income to buy bonds and saving stamps.

### Film Honors



Ginger Rogers (above), winner of the annual Academy of Motion Picture Arts and Sciences award for her performance in "Kitty Foyle." For his role in "The Philadelphia Story," James Stewart was voted outstanding actor 1940.

## County News

234 applications have been made through the Extension office and Farm Security office for mattresses under the new cotton mattress program. The Extension Service, Agricultural Adjustment Administration, Surplus Marketing Administration, Farm Security Administration, and the county court are cooperating in this program. Applications may be made at either the County Agent's Office, the AAA office, or Farm Security office. The closing date for making application in Clackamas county has been set for April 1.

All rural people in Clackamas county who live outside of Oregon City are eligible to make application and then later make from one to three mattresses from surplus cotton shipped from the south. The only expense to the individual will be a minimum cost of seventy-five cents per mattress to cover incidental expenses. Miss Irene Leach, home demonstration agent, will have direct charge of the program in Clackamas County.

The mattresses will be made in centers set up over the county and it will take from four to six people to make a mattress in one day. The making of the mattresses will be a cooperative affair, each one helping the other.

People who are eligible fall into three different groups. A farm family who has a net income of \$500 or less per year may qualify. A part-time farm family may qualify if at least half of the income is from the farm and the net income is not over \$500.

A non-farm family may qualify if their gross income is \$500 or less. In each of the three different groups \$50 may be added to the income for each member over four in the family.

A non-farm family may qualify if their gross income is \$500 or

less. In each of the three different groups \$50 may be added to the income for each member over four in the family.

Where there are three or four in the family two mattresses may be applied for. No family may secure more than three.

Clackamas county is doubly interested in this program, states County Agent J. J. Inskeep, because each year we send thousands of pounds of vetch and peas to the south for their soil conserving program.

**Deep Creek Gravel Co.**  
ROAD and DRIVEWAY GRAVEL  
At Pit or Delivered  
Rt. 1, Box 101 Boring, Ore.

**R-A-D-I-O**  
SALES and SERVICE  
Wiring & Electrical Appliances  
RHODODENDRON  
TELEPHONE COMPANY  
Frank Christensen, Jr.  
Ph. Rhododendron 100; Sandy 6x

**IN ORDER**  
To Build Up Spring Vim and Vitality, drink plenty of MT. HOOD DAIRY MILK and CREAM.  
—  
Raw and Pasteurized  
Accept No Substitute  
Adolph Amstad Ph. Sandy 293

## BARKER'S BUGLE

Smiles — and — Values

### HOWDY FOLKS:

High heels were invented by a resourceful young woman who had been kissed on the forehead.

Mother (to small son who is going to a party): "Now dear, what are you going to do when you've had enough to eat?"  
Little Tommy: "Come home."

Betty (just engaged): "Doris, do you know what it feels like to be in love, to sit next to the man you adore, and feel your innermost soul vibrate?"  
Doris: "Sure, do. I feel like that every time Joe takes me out on his motorbike."

Officer (examining recruit): "Have you any scars?"  
Recruit: "No, sir, but I can give you a cigarette."

Wanted—Large, well furnished room by a young lady about fifteen feet square.

SAVE ON SPRING  
HOUSE CLEANING  
HELPS AT YOUR  
HOME DRUG STORE

Rubber Gloves, per pair . 25c  
Chamois Skins . . . . . 49c up  
Best for polishing furniture  
Sponges, . . . . . 19c up  
Large Cleaning Sponges

Rubber Gloss Cleaner . . . 59c  
Instant Cleaner for Woodwork  
Furniture Polish . . . . . 49c  
Cleaning Ammonia, pint . 25c  
Floor Wax . . . . . 49c  
Liquid Self-Polishing

Moth Proofing Liquid . . . 85c  
Muffin Dry Cleaner . . . . 25c

## SANDY DRUG STORE

Sandy, Oregon

## ALL THE HOT WATER YOUR FAMILY NEEDS!

### A GENERAL ELECTRIC WATER HEATER Gives You Abundant Hot Water—Instantly!



**DISHES**—To get dishes clean and sterile, you need 120° to 160° F. hot water. A G-E makes this need with "a turn of a faucet."



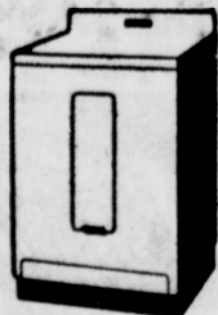
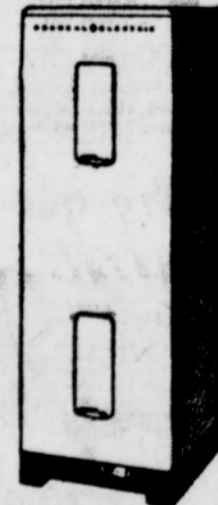
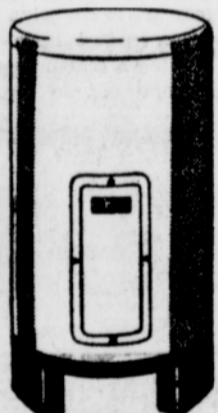
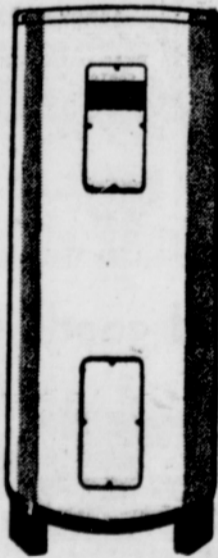
**SHOWER**—There's nothing quite so beautiful and refreshing as a "hot shower." Have plenty of hot water on hand at all times—with a G-E.



**BATHS**—With an automatic G-E water heater you don't have to "wait" for water to heat for baths. It's ready and waiting at the turn of a faucet.



**LAUNDRY**—Hot water is a necessity on wash days to get the clothes white and clean. A G-E gives a plentiful supply of clean hot water when you want it.



**HERE'S WHY A G-E Costs So Little to Use.**

1. NEW Coat Cutter Colored Unit.
2. Heat-saving Heat Trap.
3. Genuine Redwood Insulation.
4. Cold Water Detector.
5. Adjustable Automatic Thermostat.

Investigate the Economy Today

**GENERAL ELECTRIC**

# A. W. Metzger & Co.

Store Phone 234

Gresham, Oregon

Food Dept. Phone 4441

## Give JEWELRY

and you give the finest of all gifts

For that MOST IMPORTANT gift—be sure it's jewelry! A beautiful watch—Hamilton, Elgin, Waltham, Gruen or Bulova. A lovely ring— or a piece of distinctive costume jewelry— or any one of scores of other personal gifts sure to bring the greatest pleasure and happiness. Roy and Molin also feature more than 40 patterns of Sterling, Silverplate, Glassware, Electrical Needs, etc. Your visit most cordially invited.

CONVENIENT TERMS at no EXTRA COST

## ROY and MOLIN

JEWELERS and OPTOMETRISTS

316 S. W. Alder between Third and Fourth Portland, Oregon

## Spring WALLPAPER SALE



We now have a stock of Assorted Wall Paper to match the different rooms of your home.

Rolls from 8c to 20c

Always a complete stock of building material, Paints Glass and Builders Hardware.

## Sandy Hardware & Lumber Co.

Sandy, Oregon

Phone 131