

# Port Orford News



## Indian Work Help Starts

If you are a full or part native American Indian out of work, the Willow River Indian Benevolent Association (WRIBA) may be able to provide assistance in obtaining employment.

A WRIBA representative said they will have someone at the local Community Action Workshop (CAW) roughly every two weeks. Persons of Indian descent may leave their names at CAW and they will be contacted.

WRIBA is the employing agency for federal CETA Title III funds in the south coastal region, and is dedicated to providing employment assistance to all unemployed native American Indians residing in the south coast area.

ENJOYING their visit to north Curry county are Fumikeko Hayano, who turned 14 years old last Tuesday, of Nagano, Japan, and Shuji Kawamoto, also 14, of Hiroshima, Japan. Shuji is a house guest of the Corky Van Loos Sixes, and Fumikeko is staying with the Hoyt Litterells of Elk River. The youth have been here since July 25 as part of the Oregon 4-H-Japan Labo youth exchange. The boys had not met prior to arriving here, but have become "good buddies" while staying with their host families. Fishing, horseback riding, water skiing, swimming and watching tv have been favorite pastimes. They are part of an 80-youth group visiting in Oregon homes, who will be departing for Japan on Sunday.

## Kindergarten Meeting Set

Persons interested in forming a local private kindergarten are invited to attend an organizational meeting at 1 p.m. today, Thursday, August 21, at the Port Orford elementary school multipurpose room. Those who are not able to attend may call 332-5581 or 332-5722 for information.

The group is also interested in locating a teacher for the program and will consider all applications.

The private kindergarten program is being planned because the program was forced to be dropped by School District 2CJ after voters turned down a request for operating funds.

## Education Evaluation Center To Be Established In Curry

The Curry County Intermediate Education District recently received a Title VI-b Federal Grant to establish an Education Evaluation Center. This is a diagnostic and prescriptive center for children with learning disabilities. The evaluations include a psychological, educational, speech, hearing and language assessment report that is sent to the schools, other concerned agencies and parents. The reports include recommendations to the school and to the parents as to the methods and materials that may be used and the psychological climate recommended to help a child overcome his academic learning handicap.

The advantages of establishing a satellite center are considered to be as follows:

1. It will provide efficient and effective diagnostic and prescriptive services to children in an existing program.

2. It will provide diagnostic and prescriptive services for children with difficult learning disabilities.

3. The satellite center will receive materials developed by the Model Center-Learning Disabilities (Education Evaluation Center).

4. The evaluation personnel, school psychologist, extreme learning problem teacher and speech and hearing specialist, will receive a special one-week training program in August 1975.

5. On-site visits will be made by Model Center personnel from Oregon College of Education to help in the development of the satellite center during the first year of operation.

IED staff members of the evaluation education center will be available to make presentations to individual school staffs so that they may be fully aware of the center's function and capabilities.

## Fees Reduced; School Announces Free Meal Policy

The Port Commission Monday night agreed to a request by sport fishermen to reduce the hoist fee from \$5 per trip to \$4 and passed an ordinance establishing seniority for the berthing of commercial fishing boats.

The reduced fee for sport boat launching carries a stipulation that commercial fishing boats will have priority on use of the hoist.

Ordinance No. 75-3, setting seniority rights, was passed at the request of the local commercial fishermen's association, and will become effective on September 18, 1975.

It was also decided to investigate the cost of installing expanded metal tracks on the sport boat launching ramp to provide better traction.

Bills in the amount of \$6,674.93 were approved for payment.

Port Orford-Langlois School District 2CJ today announced its policy for free meals and free milk for children unable to pay the full price of meals and milk served under the National School Lunch and Special Milk Program.

Local school officials have adopted the following family size income criteria for determining eligibility.

Family Size	Income Levels
1	\$ 3,230
2	4,240
3	5,250
4	6,260
5	7,190
6	8,110
7	8,950
8	9,790
9	10,550
10	11,310
11	12,060
12	12,810

For each additional family member add \$750 to the income level.

Children from families whose income is at or below the levels

shown are eligible for free meals and free milk. In addition, families not meeting these criteria but with other unusual expenses due to unusually high medical expenses, shelter costs in excess of 30 percent of income, special education expenses due to the mental or physical condition of a child, and disaster or casualty losses are urged to apply.

Application forms are being sent to all homes in a letter to parents. Additional copies are available at the principal's office in each school. The information provided on the application is confidential and will be used only for the purpose of determining eligibility. Applications may be submitted at any time during the year.

In certain cases foster children are also eligible for these benefits. If a family has foster children living with them and wishes to apply for such meals and milk for them, it should contact the school.

In the operation of child feeding programs, no child will be discriminated against because of race, sex, color, or national origin.

Under the provisions of the policy the principal of the school will review applications and determine eligibility. If the parent is dissatisfied with the ruling of the official, he may discuss it with the school and may make a request either orally or in writing to Superintendent, Port Orford-Langlois School District 2CJ, Port Orford, 332-5241 or 348-2337 for a hearing to appeal the decision. The policy contains an outline of the hearing procedure.

## Registration On At 2CJ Schools

School opens Tuesday, Sept. 2, in Langlois-Port Orford School District 2CJ. There will be a full day of school, buses will run at the regular time and lunches will be served.

All students who plan to attend Pacific High School, including those who pre-registered during the spring semester, are to register on Wednesday, Aug. 27; Thursday, Aug. 28; and Friday, Aug. 29.

Registration will be held in the library from 10 a.m. to 4 p.m. on Wednesday, and from 9 a.m. to 4 p.m. on the other two days.

Student fees should be paid at the time of registration. If fees cannot be paid at this time other arrangements can be made at the high school office. General fees common to all Pacific students total \$15. These include textbook rental, studentbody fee, and towel fee. Other fees such as insurance, shop, etc., are either optional or are dependent on courses taken.

Students who have attended out-of-state or out-of-district schools previously are urged to call the school office on any business day so that a transcript of their credits can be sent for prior to registration.

Students from Port Orford who will attend seventh and eighth grade at Langlois will register at Port Orford Elementary School, Monday and Tuesday, Aug. 25-26, from 9 a.m. to 3 p.m. Langlois students, first through eighth grade, will register Thursday and Friday, Aug. 28-29, from 9 a.m. to 3:30 p.m.

Elementary students, first through sixth grade will register Thursday and Friday, Aug. 28-29, from 9 a.m. to 3:00 p.m. All entering first graders must have a birth certificate. New first graders must also reach the age of six years prior to Nov. 15 or they cannot be enrolled.

The complete bus schedule appears below:

**BUS SCHEDULE**  
Route 1 - Upper Four Mile Run Bus #59, Loretta Moore.

**AM Run** - Leave Pacific High School 7:20 a.m., north to Upper Four Mile to bridge, pick up both forks if required, back to 101 (7:55 a.m.). South on 101 pick up students to Langlois. Leave Langlois 8:15 south to Lower Floras Lake Road, transfer students for Pacific High, leave Pacific at 8:30 for Langlois with Jr. HI, return to Pacific 9:00 a.m.

**PM Run** - Leave Pacific High School 3:22 p.m., north to Langlois, pick up students, north to Upper 4 Mile Road, return to Pacific.

**Route 2 - Sixes Run, Bus #2 Floyd Keeler.**

**AM Run** - Leave Port Orford Elementary 7:15 a.m. North on 101 to Sixes, up Sixes to Plumtree. Return to 101 at Sixes Store (7:55 a.m.). Transfer high school students plus junior hi. South to Hensley Hill Road. Return to 101. South to Paradise Point and Dump Road to Port Orford Elementary School. Leave Elementary school 8:20 a.m. to Langlois. Pick up junior high then North. No other stops.

**PM Run** - Leave Port Orford Elementary to Paradise

Point Road, Dump, back to 101. North to Hensley Hill return to 101, north to Sixes Store. Pick up high school and junior high. East to Plumtree. Return to Port Orford Elementary.

**Route 3 - Hubbard Creek Run Bus #3, Lloyd Goode a.m. - Rick Peabody p.m.**

**AM Run** - Leave Port Orford Elementary 7:15 a.m. South 101 to Hubbard Creek, take Cemetery Loop, return to 101 to Coast Guard Hill, return to 101 north out Paradise Point and Dump road. Return to Port Orford Elementary then to Pacific. Pick up Special Ed. return to Port Orford.

**PM Run** - 2:40 p.m. leave Port Orford Elementary up (See page-5)

## CCD Will Meet Today

The Coos-Curry-Douglas Economic Improvement Association board of directors will meet today, Thursday, August 21, at 1:30 p.m. in the commissioner's conference room in the basement of the courthouse at Gold Beach.

Primary purpose of the meeting will be to consider initiation and implementation of a program to secure federal excess property for use by local jurisdictions within the three-county area. The executive committee approved a motion recommending that the full CCD board authorize the CCD district to submit the program to EDA and to request that CCD be sanctioned to participate in the federal excess property program.

The meeting is open to the public.

## Savings Firm Plans Opening

Benj. Franklin Savings and Loan Association has purchased a mobile van to serve the communities of Bandon, Gold Beach and Port Orford, according to Association president Robert H. Hazen.

The state-wide financial firm hopes to have the unit in operation in the three communities this October, although plans regarding the various locations have not been finalized.

The van is a fully-equipped motorized office with two teller's windows, lobby area, stand-up writing table for customers and a manager's office. The unit is 29 feet long, 7'2" wide with an exterior height of 9 feet. The ceiling can be extended when the office is in operation to an interior height of seven feet.

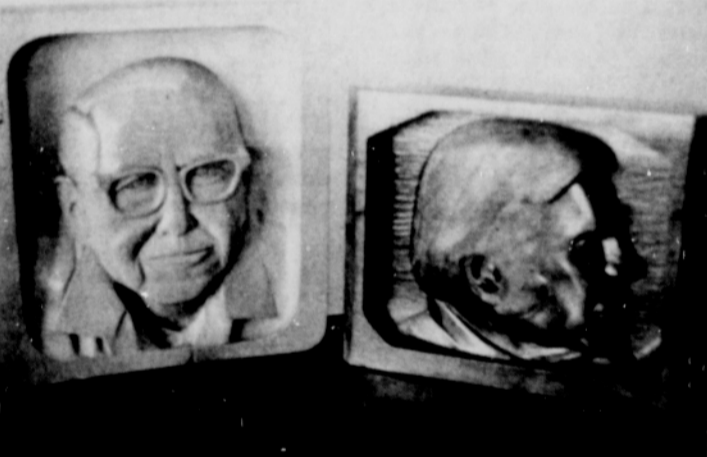
Benj. Franklin plans to have off-street parking for customers and hopes to build a covered entrance structure at each location.

The Association said that business hours in each community, along with the names of office personnel have not been determined.

Benj. Franklin presently serves an area from Portland south to Coos Bay and from Seaside east to Hermiston.

## AGLOW TO MEET

The Curry County Chapter of Women Aglow Fellowship will meet next Friday, August 29, at the Sunset Inn in Gold Beach. All ladies are invited to attend. For more information contact Nancy Peterson, 332-4773.



AN EXHIBIT of about a dozen woodcarvings by Don Babel of Seattle will be on exhibit at the city library for the next two weeks. Babel is the son of Mrs. Grace Babel and the brother of Mrs. Nadine McWilliams. He graduated from local schools prior to moving to Seattle in 1946, where he is a Federal Way Aerospace Mechanic for the Boeing Co. Babel began carving while in school here and old-timers may remember his animals and airplanes. Babel's carvings begin from solid blocks of wood and his skill is expressed in the fine detail of his work.

## Coach Issues Runner Advice

Pacific high school cross-country and basketball coach Doug Orton this week issued a reminder to all boys or girls who are planning to turn out for the cross-country team this fall.

Orton said that this is the time of the year runners should be working a series of stretching exercises and doing some light to moderate jogging on a daily basis. "This will get you in better shape for the first formal work-out on the first day of school, Sept. 2," Orton said.

## Curry Fire Controlled

A forest fire on Siskiyou National Forest lands in eastern Curry county that damaged about five million board feet of timber was controlled about 9 p.m. last Wednesday night. Control costs and resource damage of the blaze is expected to reach \$1 million, with more than three-quarters of that amount charged to timber and watershed loss.

The fire was reported at 4 p.m. Monday, August 11, about eight miles northeast of Agness.



A cat dreams all night long of a sheep's tail.

DONATE EQUIPMENT. Art Sypher, left, and Ralph Earle, members of the Langlois Lions Club, last Tuesday presented five new baseball bats and a dozen new balls to the city's summer recreation program on behalf of the club. Accepting the equipment for the city is Craig Lannom, director of park athletics.



HATCH COVERS for this newly launched aluminum vessel were designed and engineered by Bob Sutton of Port Orford.

## New Boat Launched Friday

Scores of people were on hand Friday at the Gold Beach waterfront to view the launching of one of the world's most unique commercial fishing boats. Owned by California dentist James Vann, the 62 foot all-aluminum "Osprey" will serve as home for the entire Vann family. Custom-designed by Munk of Seattle, and constructed by Freeman-Howard of Gold Beach, the boat offers such family features as special high railings to protect the children, non-slip decks, full-sized refrigerator, range, microwave oven, and even a washer and dryer.

The Osprey's home port is listed by Vann as "the Pacific Ocean". Carrying the latest in electronic gear and navigational aids, the craft is rigged for tuna and salmon fishing anywhere in the Pacific.

On hand for the launching was Port Orford's Bob Sutton, who took a special interest in the Osprey since he designed both the anchor winch and watertight hatches for the craft. The Osprey is one of the several new boats featuring Sutton's hatch, which has a unique cam-operated closing device operated by a handle built into the hatch cover. Sealing pressure remains constant around the entire perimeter of the hatch cover, which cannot be over or under-tightened, and two sealing surfaces are provided for greater safety. Sutton's new hatch will be manufactured and distributed by Freeman-Howard Inc., builders of the Osprey. Several models are being tested in the roughest waters in the world, on the Kodiak King crab fleets.

## Tennis Play This Weekend

This Saturday and Sunday, August 23 and 24, the First Annual Port Orford Summer Tennis Tournament will be held at Buffington Park from 9 a.m. until conclusion each day. Saturday will be competition in Men's and Women's Doubles, then on Sunday Men's and Women's singles. All interested participants should be at Buffington by 9 a.m. to register and begin play. The tournament pairings will be made each morning at 9.

"This should be a great tournament and we hope to see all those who participated in the first tournament this summer back again," said Craig Lannom, city athletic director. Eric Franklin and Justina Morris should be back to defend their titles. Trophies will be awarded to the winners in each event.