



Merry Christmas to All



Annual Christmas Issue

Port Orford News

Merchants Send Greetings

Vol. 10 No. 38

Thursday, December 21, 1967

McCall Releases Study On NW Economic Growth

Population and employment in the Pacific Northwest are expected to grow at rates faster than the national average during the 1970s, according to a regional economic study by a leading research organization made public Thursday in Portland by Gov. Tom McCall.

The Oregon governor said that the study made it clear that government agencies, commerce and industry in the Northwest must work closer together to provide the effective leadership and planning needed to shape future civic and economic developments.

"This is the only way the Northwest can benefit materially from the increase in population and jobs foreseen for the region through the 1970s," McCall asserted.

The Oregon governor noted the growth trends for the Northwest are projected in a comprehensive economic study just completed by an internationally known research organization, Columbus Laboratories of Battelle Memorial Institute in Ohio.

Gov. McCall, Gov. Dan Evans of Washington, Gov. Tim Wabcock of Montana, and Gov. Donald Samuelson of Idaho made public the principal conclusions and recommendations of the Battelle report at conferences in each state. Key business leaders of the states, among them representatives of the banks and utility companies that sponsored the study, also attended the sessions.

A review of the Battelle report was presented by David C. Sweet, representing the research organization. He was one of the group of Battelle economists who managed the study project.

Emphasis on the need for broad-scaled planning at all levels of state and local government and by private business is a key conclusion of the report. Economic aspects of the study are supported by 30 background reports prepared by prominent authorities from the region's leading universities and consulting agencies.

FOREST PRODUCTS
Gov. McCall noted the report emphasizes that under the impetus of advanced technologies, the region's basic forest products and agricultural industries are rapidly evolving into a more stable and thriving economic base for the region.

Production of metals, transportation equipment, chemicals and electronic equipment will result in a new level of industrial diversification, the report stated.

"This diversification will provide a broader, less volatile industrial base and more stable job opportunities in the region," Gov. McCall stated.

The geographic area encompassed in the report covers the states of Oregon, Washington and Idaho and the 11 western counties of Montana.

OTHER CONCLUSIONS
Other conclusions and recommendations include:

1. Northwest population will increase 1,700,000 persons to a total of 7.5 million by 1980. That represents an annual growth rate of 1.7% for the region, or 13% greater than the rate forecast for the United States as a whole. This would reverse the trend for the period 1950 to 1965, when the Northwest population grew at a rate slightly below the national average.

2. Over-all employment in the region is expected to increase from 2.3 million to nearly 3 million persons by 1980.

"By the year 2000," the report predicts, "more than 10 million persons are expected to live in the region, and employment then will exceed 4 million—more than double the 1960 total."

3. During the 1970s, manufacturing employment is expected to grow at more than twice the national rate, with major production increases in machinery, transportation

equipment, and rubber and plastic goods.
The region's industrial leader for manufacturing has been transportation equipment, principally aircraft production centered in the Seattle area. One recent report pointed out that at the beginning of 1962, about 52% of the free world's commercial jets were those of the Boeing Company.

Boeing's development of the supersonic jet transport will have long-term benefits for the Puget Sound area and the rest of the Pacific Northwest, the report said.

4. Production of exotic space-age metals centered in the Willamette Valley has expanded rapidly, particularly the titanium industry which will play a significant part in construction of the SST.

"Opportunities should be opening up for greater aluminum fabrication activities," the report indicated, "but there are limited growth prospects for direct employment in smelting." Battelle quoted a study by Stanford Research Institute: "The outlook is for slower growth in aluminum reduction in the Pacific Northwest to 1980 as compared with the past 20 years and as compared with the outlook for national aluminum smelting capacity."

Paralleling the manufacturing gains will be the growing importance of service industries as major sources of employment—placing "great reliance" upon human resources and capabilities.

5. Technological developments in food production and processing—including new fertilizing techniques, drainage and irrigation on the farm and sophisticated packaging, freezing and canning in the factory—all will bolster the region's agriculture.

Increasing world demands for food products will be a major influence in the Northwest. Irrigation of new or existing farmland is expected to result in yields substantially above the national average—and better opportunities are attracting more private capital for irrigation developments.

6. Forest products will continue a transition underway for some years, from primary lumber production to a more complex product-oriented industry with plywood, paper and composition board as major products.

"Expanded and enlightened marketing programs are evidence the timber industry is facing up to the challenge of gaining an increasing share of the construction dollar."

7. Perhaps one of the greatest opportunities facing Northwest industries are the markets open to them through a continued expansion of trade.

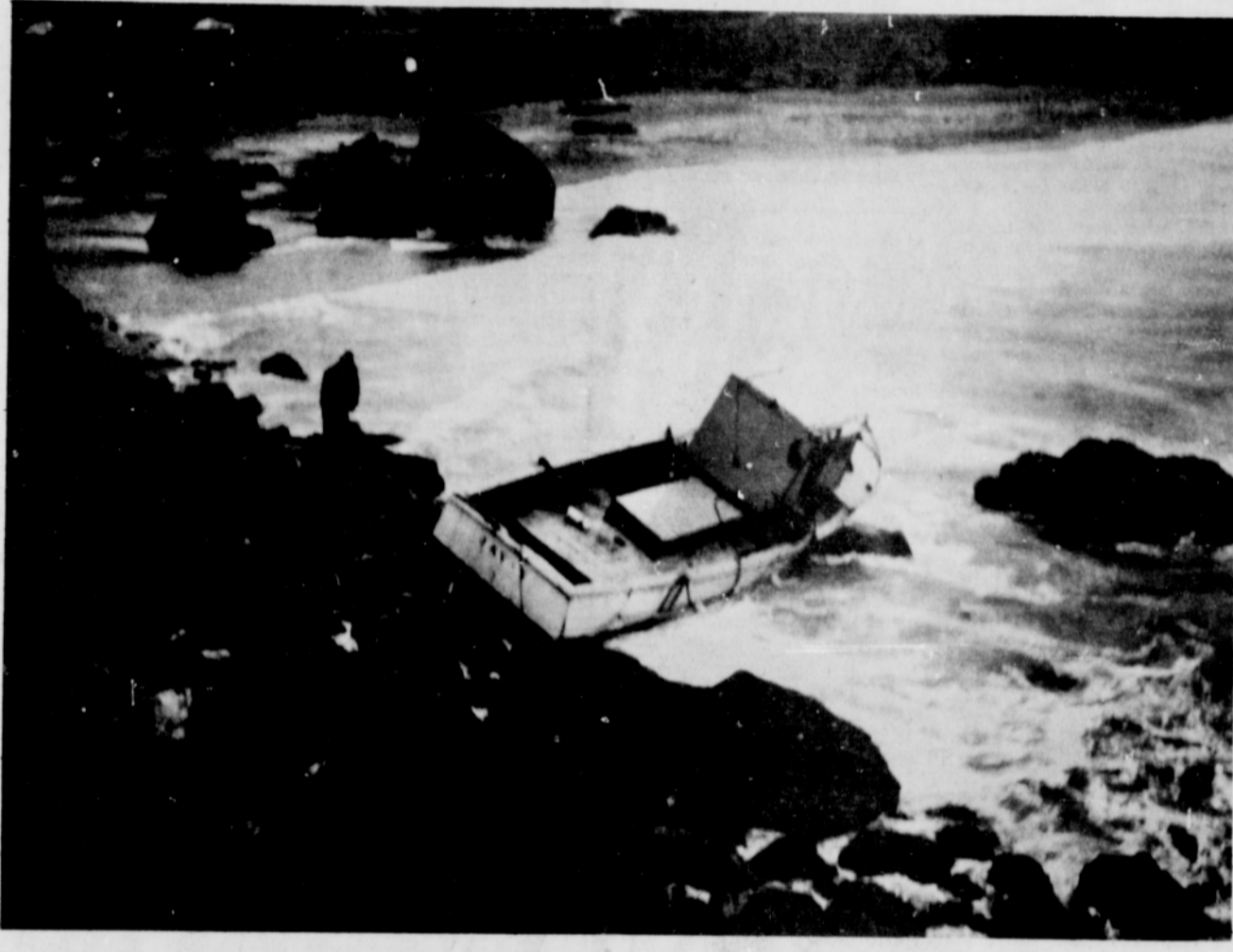
"One of the factors which enhance growth prospects of the region is the high level of education of its residents," the Battelle study said. "Every adult age group in the Northwest, on the average, is better educated than the corresponding group in the nation."

The report added that the educational factor is a "dynamic asset in view of the growing technological sophistication of the economy and the increasing demand for high quality human resources—ranging from skilled craftsmen to highly trained professionals."

The economists sum up by recommending careful planning for the future, to help achieve a proper blend of residential, commercial, industrial and recreational developments. They urge community action programs stimulated by local leaders who can encourage and guide the planning.

"A key to the reflective planning and effective decision-making needed for success on the local level may well be the establishment of citizen groups dedicated to the understanding of local problems and potentials," the report said.

Fishing Boat Blown Off Dock



HIGH WINDS with gusts up to a reported 65 miles per hour blew the 34-foot fishing boat Jay Y off the dock Sunday afternoon. The boat, owned by Kent Wagner, was on its trailer in the boat hoist area when winds rolled it over the dock's edge and into the sea. The craft washed up on the rocks between the cannery building and dock ramp, where the Griffey-Laird wrecker was used to pull it back up to the storage area. Extent of the damage was not definitely established but the boat was loaded on a Griffey-Laird low-boy and hauled to Charleston boatworks for repairs. Sunday's storm, with winds reportedly up to 80 miles per hour at Cape Blanco, also blew a front section of the roof off the Elmer Bens home, located on the hill overlooking Hubbard's Creek bridge.

Former Resident Fills Kentucky Post



Stearns, Kentucky, Dec. 13, 1967—Robert E. Gable, a former resident of Port Orford, has been named Commissioner of Parks for the State of Kentucky by Governor Louie B. Nunn.

Mr. Gable is the son of the late Gilbert E. Gable, who was a pioneer in the development of southwest Oregon and first Mayor of Port Orford. His mother was the late Paulina Stearns Gable, who was active in civic affairs in Port Orford.

Mr. Gable received his early education in the Port Orford schools and lived in Port Orford until his father's death in 1941. He is a graduate of Stanford University and is vice president of the Stearns Coal and Lumber Company; a company which was founded by his great-grand-

father, Justus S. Stearns, in 1902. Mr. Gable is married to the former Emily Thompson of West Hartford, Conn., and they have three children, Jim, Beth and John. The family home is in Stearns, Kentucky.

Candlelight Service Is Christmas Eve

On Christmas Eve, Dec. 24, at 11 p.m. every one is invited to join in the Christian fellowship service, praising the Savior of the World.

You will enjoy an impressive program by the senior, junior and Sunday School choirs as well as a quartet, trio, duet and solo, also special vocal numbers by girls from Pacific High. There will also be in store for you an organ and piano duet and an accordion solo. Costumes representing various countries will also be seen during the candlelight service.

Bring your family and friends to come and participate in this special festive service and make it a "Christmas Around The World." The Candlelight Service will be held at Zion Lutheran Church.

CHRISTMAS LETTERS—Page 6

Wallace Named D. A.

Governor Tom McCall last Friday appointed William N. Wallace, 34, of Gold Beach, as district attorney for Curry county. Wallace succeeds Robert L. Miller, who resigned.

Wallace, a Democrat, will serve from Dec. 18, until the post is filled in the November 1968 general election.

Commenting on his appointment, McCall said: "William Wallace's ability and experience qualify him to serve as Curry county's district attorney. He is an extremely knowledgeable attorney and highly respected by the members of his profession."

Wallace, a long-time resident of Curry county, is a University of Oregon Law School graduate. He served in the U. S. Army during the Korean War.

Wallace and his wife, Karen, have one child. They live on Highway 101 south of Gold Beach.

Board Makes First Report

Following a week in office, the Board of County Commissioners, in making their first report, said they are getting acquainted with procedures and conducting regular business.

Ira W. Tucker, chairman, and Homer Kerber and Gene Colegrove, commissioners, met in regular session and approved the accumulated expense claims and the following matters coming before them.

Sheriff Allen Boice appeared before the board to recommend the placement of a deputy in the Agness area. Donald E. Wheaton has accepted the position at a salary of \$450 per month.

The Board approved the application of U. S. Plywood-Champion Papers to remove gravel from designated areas on Rogue River.

County Board recommended that an application for liquor license by Sporthaven Inn, Harbor, requested by Gerden E. and Pearl M. Miller be approved.

Bill Crook, Robert M. Knox and E. Foster were appointed to the Forest Land Classification Board.

During the week the commissioners toured the north and south banks of the Rogue River viewing county roads; also visited the new Gold Beach county shop and dog pound.

The Board of Commissioners invite citizens of the county to come in and get acquainted.

Date Changed

Winter term registration at Southern Oregon College in Ashland has been changed from Tuesday, Jan. 2, to Wednesday, Jan. 3, Dr. Esby C. McGill, dean of faculty, announced this week.

Dr. McGill said as a result of this change, classes in Ashland will begin Thursday, Jan. 4, instead of Wednesday. Registration will be accomplished in the college gymnasium Jan. 3 and in the Registrar's Office in Churchill Hall through Jan. 12.

Newkirks Win Top Home Prize

The Del Newkirk home at Silver Springs walked off with the top prize in the annual home Christmas decorating contest this year, for a cash award of \$15.

Second place, for \$10, went to the Windmaier home on Oregon St. The six third place winners, for \$5 each, were the homes of Leo Mitchell, Mrs. Don Anderson, C. H. Dunn, Russell Juola, Fred Reis and Tom Petok.

Prize money was donated by Coos-Curry Electric and the chamber of commerce.

In the commercial division, Western Builders won first, Hahn Hardware, second, and First National Bank, third.

In announcing the winners, Christmas Association president Gil Rush also made special mention of the Geer Addition that judges said was outstanding as a residential group.

Mica is used as an insulating material.

Jefferson Davis was born at Fairview, Ky.

School Program Highlights Annual Community Party

Most people who attended the annual community Christmas party Monday night went home with the same opinion: that it was the best one yet, and because of the excellent performances of the school bands and choruses. Thunderous applause rewarded students and directors, alike, after individual selections, and they were given a standing ovation at the conclusion of the program.

Kenneth Nelson directed the bands, chorus groups were directed by Wayne Merrill. Ben Inabnit accompanied the vocal selections.

About 500 people attended the event despite a rainy, cold night, it was estimated.

Following the school program, Christmas Association president

Gil Rush made the announcement of awards for the decorating contests in both home and commercial divisions.

Group singing of Jingle Bells preceded the appearance of Santa Claus who made a tour through the audience, then mounted the stage to talk to youngsters and pass out candy treats.

Master of ceremonies was Paul Peterson.

WEATHER	Date	Max	Min	Rain
	Dec. 13	44	28	.00
	Dec. 14	45	27	.00
	Dec. 15	57	27	.00
	Dec. 16	49	39	.12
	Dec. 17	49	34	.61
	Dec. 18	49	34	.40
	Dec. 19	42	31	.56

McGarvey To Head Masons

Members of the Port Orford Masonic Lodge were guests of the Port Orford Christian Church Sunday morning and in the afternoon the officers of the lodge were installed by Frank Mooris, Demps Gillfillan and Norman Baker.

Installed were H.A. McGarvey, worthy master; Fred Savage, senior warden; Hoyt Littrell, junior warden; Calvin Smith, treasurer; Frank Morris, secretary; Vern Magnuson, senior deacon; Jim Riedinger, junior deacon (not present); Dick Barklow, Sr. S.; Ed Bigelow, Jr. S.; Norman Baker, chaplain; Odell Flake, marshal; Ariel MacDonald, Tiler.



YOUNGSTERS WAITING to talk to Santa Claus at the annual Community Christmas Party Monday night swarmed the stairway leading to the Battle Rock gym stage. About 500 people attended the event.