

## Butler Bar Campground

If you're seeking peace and solitude for the weekend or a week you'll be hard pressed to locate a more favorable area than the Butler Bar Campground, located 20 miles from the highway up the enchanting Elk River. Nestled deep among the river canyon in the rugged Siskiyou Forest mountains, this wilderness camping area will delight the appetite of the most avid nature-lover.

Leaving Highway 101, about 2 1/2 miles north of Port Orford, you'll follow a wide, paved road for five miles, just short of a mile before entering the Siskiyou National Forest. From here the road is reduced to a well-graveled, two-lane route of lazy curves bounded on one side by the Elk and the other by "sky-high" mountain peaks covered with Douglas Fir. Scores of varieties of native flowers and shrubs mingle among the trees and fern to form a forest carpet of delightful colors.

Several unimproved picnic areas are found along the river where swimmers and fishermen enjoy their individual pleasures. Side-roads and trails are numerous.

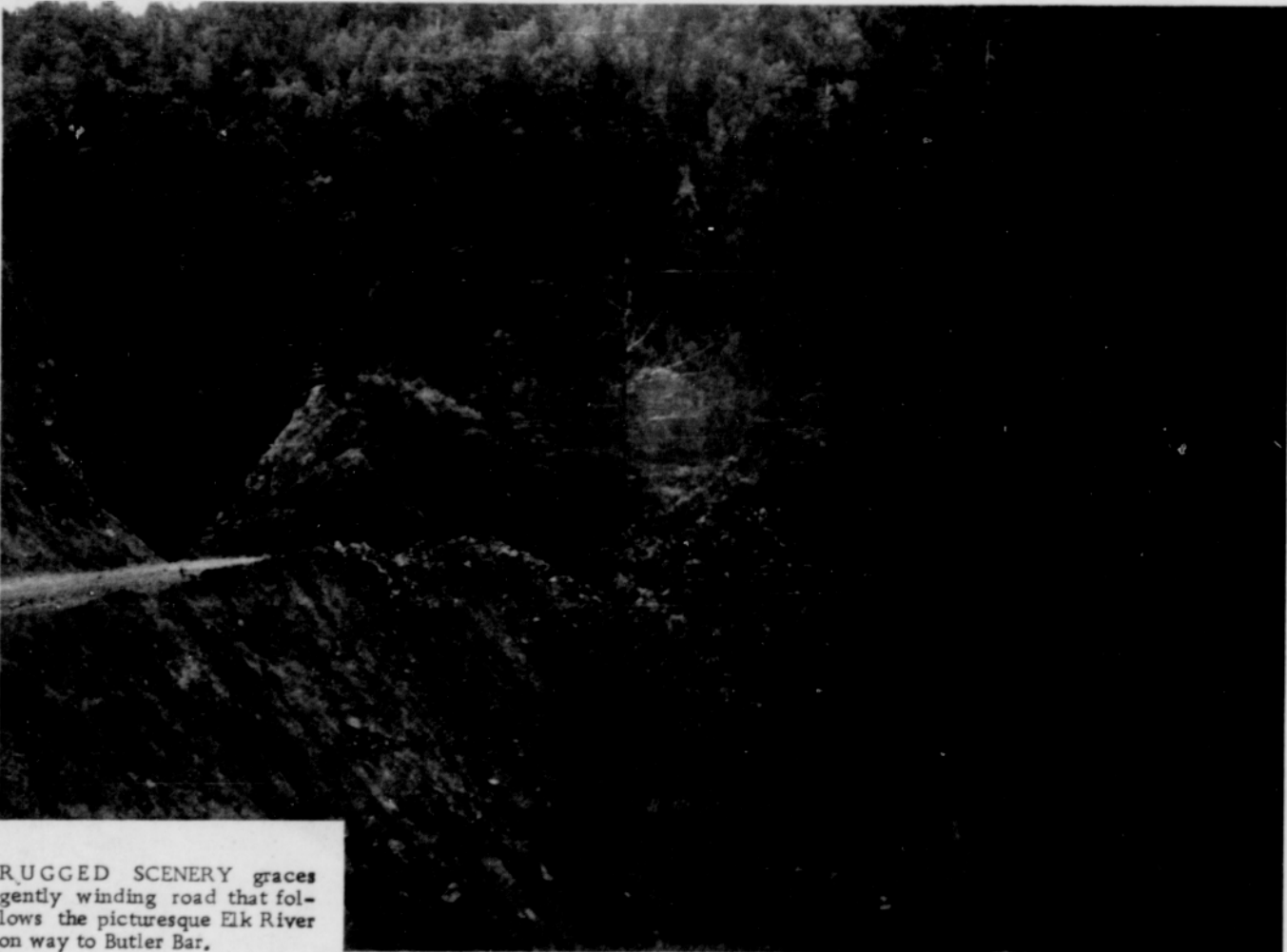
Two improved picnic areas, Sunshine Trail Camp and Panther Creek Camp, afford fireplaces, tables and restrooms in restful settings. Sunshine Trail is 16 miles from the highway and Panther Creek is 18 1/2 miles.

Just 1 1/2 miles up-river from Panther Creek Camp is Butler Bar Campground, where 11 overnight, or picnic units await the camper. Each unit has its own fireplace, table and trailer or tent area. The cool water from Elk River is piped into the campground and wood, garbage cans and restrooms make camping a real treat.

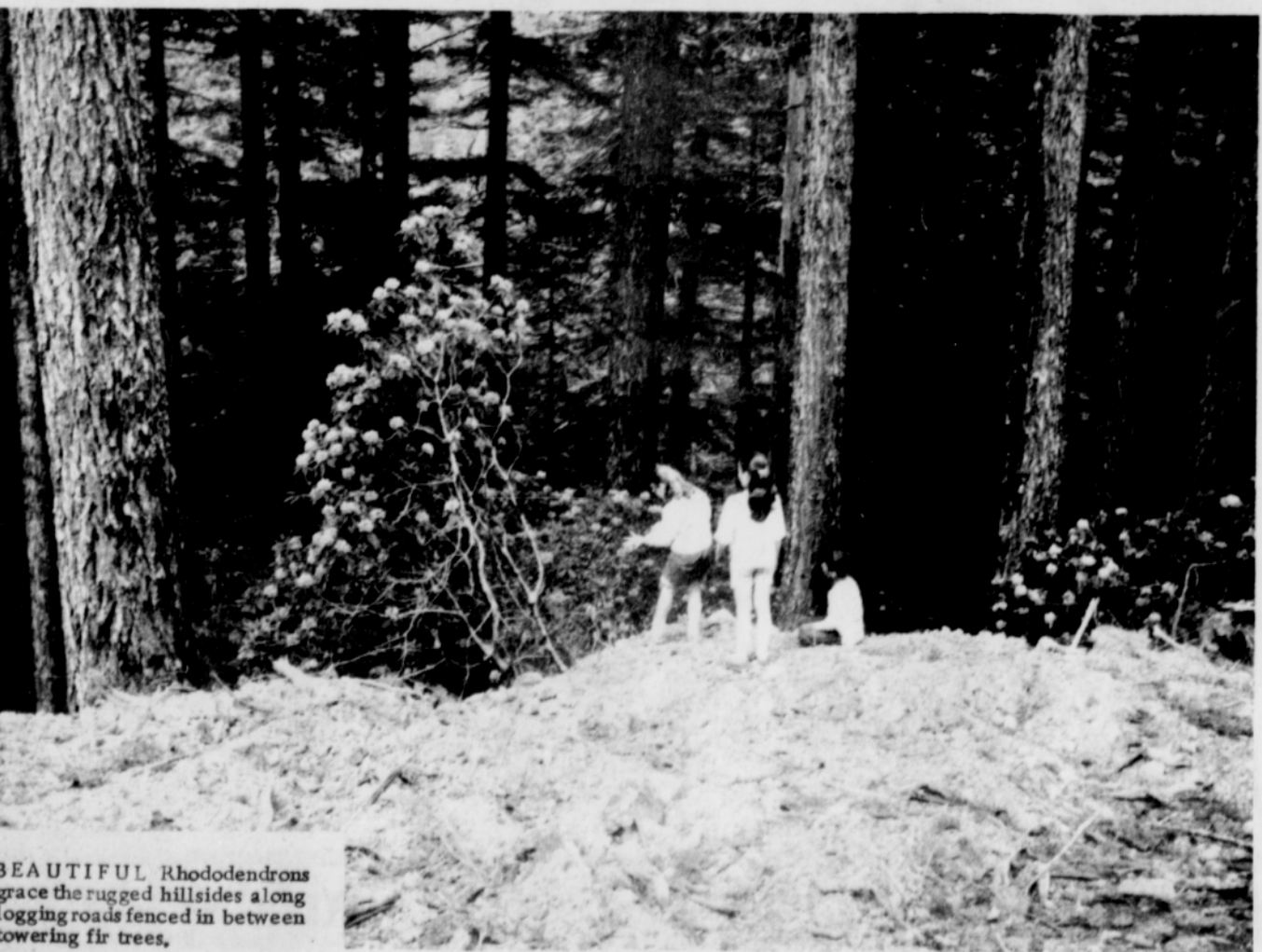
Hiking, picture-taking, fishing, fossil hunting or just plain relaxing will make your stay at Butler Bar a real vacation thrill.



BUTLER BAR campground entrance is marked with attractive sign pointing way to the 11 unit wilderness facility.



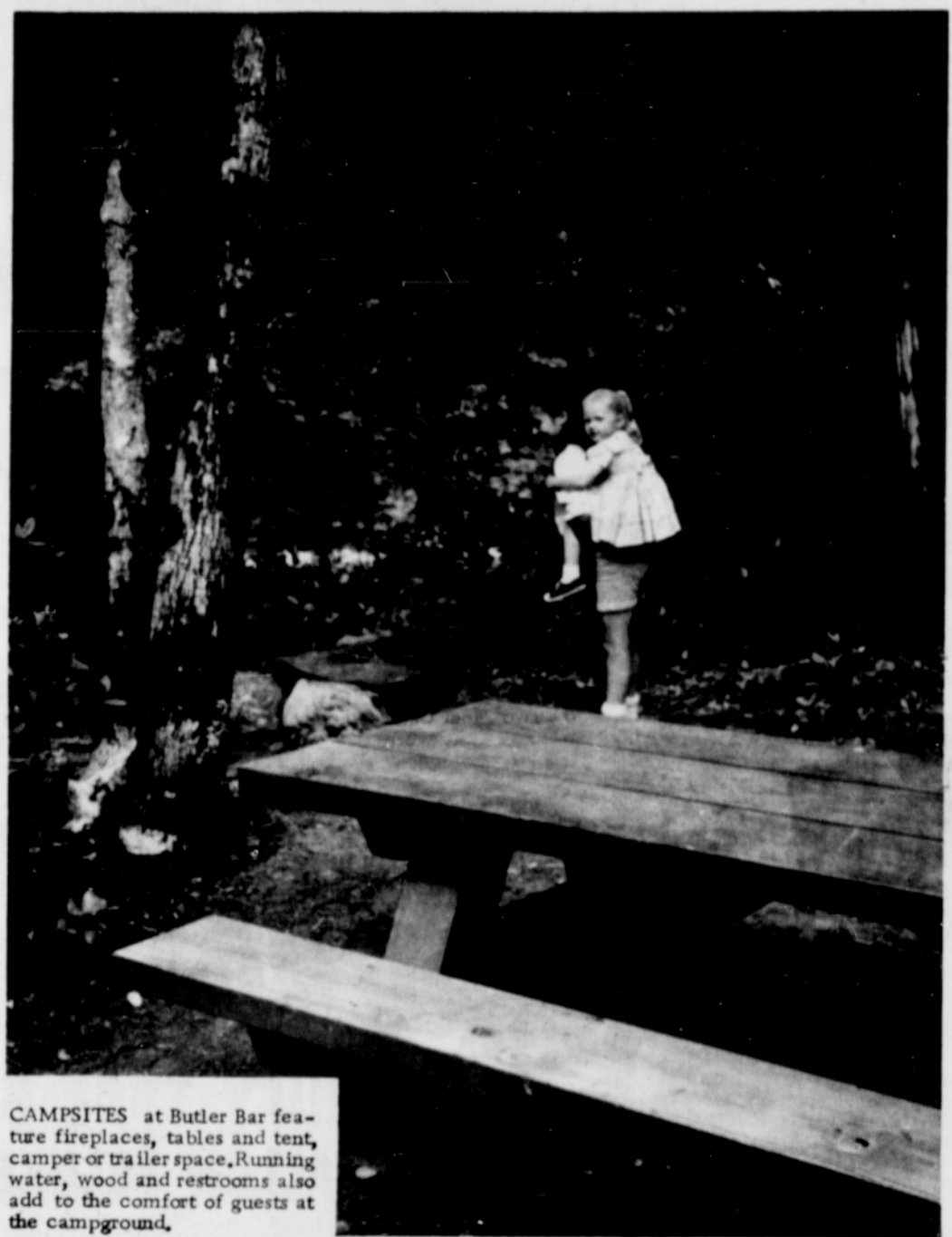
RUGGED SCENERY graces gently winding road that follows the picturesque Elk River on way to Butler Bar.



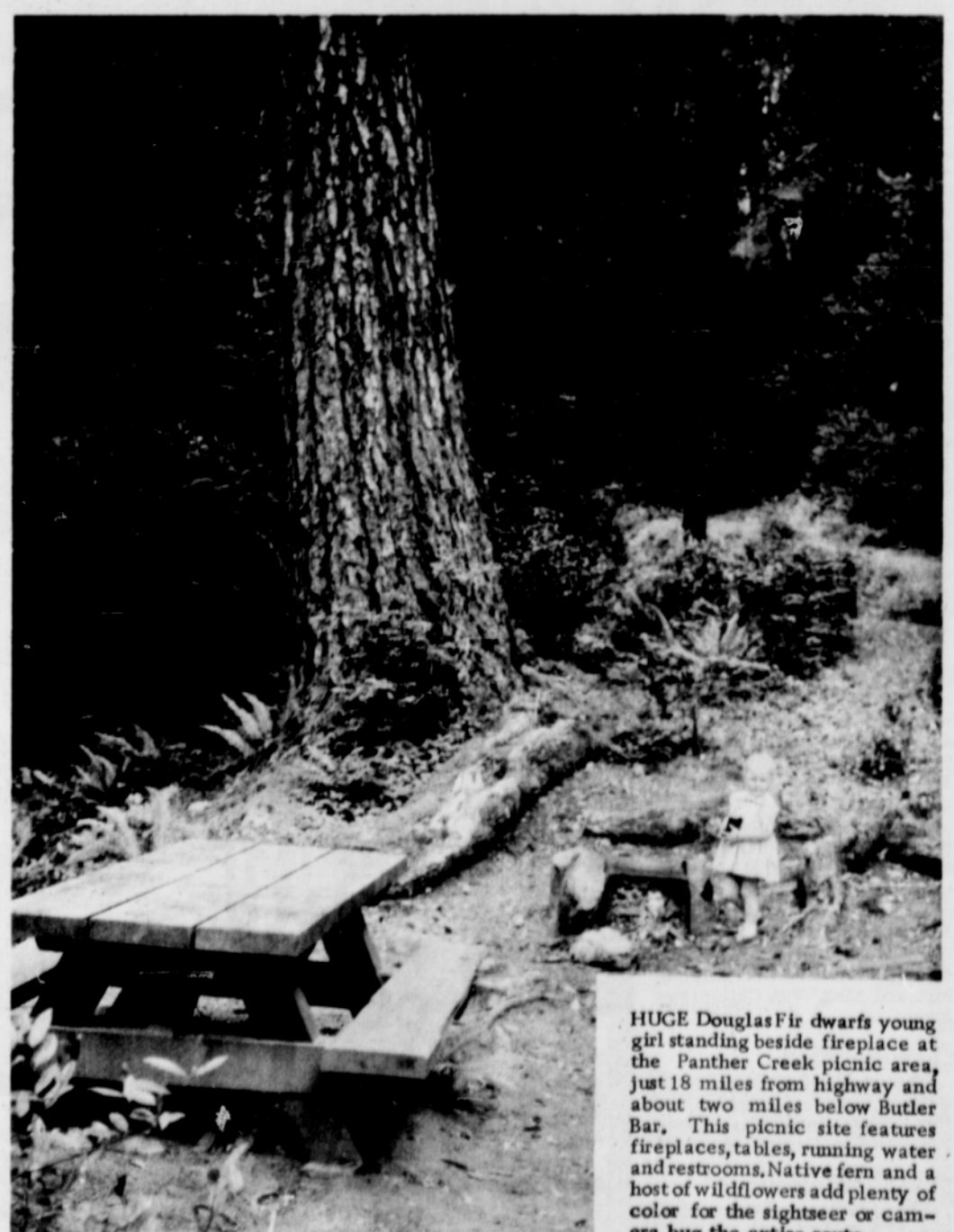
BEAUTIFUL Rhododendrons grace the rugged hillsides along logging roads fenced in between towering fir trees.



QUIET SECLUSION and warm temperatures lend themselves to a comfortable game of pinocle after a big Sunday picnic dinner enjoyed by local residents at Butler Bar.



CAMPsites at Butler Bar feature fireplaces, tables and tent, camper or trailer space. Running water, wood and restrooms also add to the comfort of guests at the campground.



HUGE Douglas Fir dwarfs young girl standing beside fireplace at the Panther Creek picnic area, just 18 miles from highway and about two miles below Butler Bar. This picnic site features fireplaces, tables, running water and restrooms. Native fern and a host of wildflowers add plenty of color for the sightseer or camera bug the entire route.