

OREGON MINERAL SURVEY

(From Mining Truth) North Santiam District

In the summer of 1930 a geologic reconnaissance was made of part of the North Santiam district, a region for which almost no authentic information has been heretofore available.

As long ago as 1892 mineral deposits were discovered by Mr. Dawes, who in the summer of 1930 was still a resident of the district. At times since the discoveries were made considerable development work has been done on about a dozen lodes, some of which have produced gold, copper, and other metals.

In 1930 the Amalgamated Mines Company was operating a mine near the mouth of Battle Axe Creek, at which it was building a mill. This mine is on the lode originally located by Dawes. It is developed by a 1,300-foot tunnel made by former owners. In August the present operator had shipped to a smelter an arload of ore taken from a stope above this tunnel.

A few lodes along Agle Creek, in the northern part of the district, have been rather extensively developed, and considerable gold is said to have been produced from

them several years ago. Similarity to Bohemia The rocks of the Santiam district are chiefly andesitic lava with relatively small amount of tuff. Both rocks have been intruded by dikes of granodiorite or related intrusives. Here, as in the Bohemia district, the lava and tuff in the neighborhood of the intrusions are noticeably bleached and impregnated with scattered grains of pyrite.

Probably the veins are likewise related to the intrusive rock, though most of them are rather distant from its outcrops. As a rule the veins trend north-west and extend for considerable distances. In general they are narrow, though ore shoots of workable size occur in places.

The gold ore produced in the vicinity of Ogle Creek came from the upper and oxidized parts of the lodes, but in general the oxidized zone is relatively shallow, and in some lodes it is lacking.

Characteristics of Ore

Most of the lodes contain pyrite. Some, in addition, contain chalcoppyrite and in places show scanty amounts of calcite as a gangue. Smelter returns for a few carloads of ore and concentrate shipped before 1928 from T. G. Donall's mine, at the mouth of Gold Creek, contained from 4 to 20 per cent of copper and from 1 to 5 ounces of silver to a ton. Other samples reported to represent the average of ore shoots as much as 5 feet in thickness assayed from 2 1/2 to 4 1/2 per cent of copper and about an ounce of silver and a few cents in gold to a ton.

An ore body of another type is exposed in the mine near the mouth of Battle Axe Creek, worked by the Amalgamated Mines Co. This body consists of pyrite, galena, and sphalerite in a quartz gangue. These minerals form a lenslike body that is at one place 10 feet wide. At other places the lode in this mine contains scattered veinlets and bunches of the ore minerals mentioned. Up to the time the Geological Survey party left the district returns from the car of ore shipped by the Amalgamated Mines Co. in 1929 had not been received. The body from which this ore was taken, however, was evidently rich in sulphides of zinc and lead.

The relations of the ores in this district suggest a zonal distribution in which copper with very little gold was deposited near the intrusive bodies; lead and zinc far-

ther away, and most of the gold was carried into a still more distant zone.

(To be continued.)

SIXES NOTES

C. C. Hayes of the Madden mine is on a business trip to Grants Pass.

Mr. and Mrs. Arch Gibson visited Mr. and Mrs. Ralph Helmken at Coquille Saturday.

Mr. and Mrs. Lester Fitzhugh, Lewis and John Farrier attended to business in Bandon Tuesday.

Mr. and Mrs. Howard Hull had as their Sunday dinner guests, Roy Corson and daughters, Peggy and Doris of Port Orford.

Roy Haft began working yesterday at the White Bros. logging camp on the Hughes ranch at Cape Blanco.

Mrs. C. C. Woodworth was calling on friends in Port Orford last Wednesday evening.

E. L. White has completed a most attractive fireplace in the Harry Dewey residence. Cut agates were placed in the concrete.

Mrs. C. C. Hayes and children are visiting in Seattle, Wash., with relatives and friends.

Mr. and Mrs. John Hult of the Inman Mines are entertaining their friend Mr. Winters of Sacramento, Calif.

A new road is being built to the Madden Mine and mining equipment recently purchased in California is to be installed.

Walter McGill and Wm. Matheny were business visitors in Bandon yesterday.

PIRATES' WEEKLY

Ruby Purdin, Editor

Last Friday the Senior class took their "sneak day", by going to Middle Elk and enjoying a picnic lunch. After lunch some hiked while others fished and mined. All enjoyed the day, returning about 6:30 p. m.

The tulips in the Junior's flower garden are beginning to bloom. They are of a different variety than the Sophomores.

The garden work is progressing quite rapidly. The Freshmen and Juniors have improved their gardens this month by planting and

doing much hoeing. If the good weather continues we expect to have the gardens in fine shape by the ending of the school year.

Lawrence Tichenor, graduate of 1929, and now attending Linnfield college, won second in the 880 yard run last Saturday at the track meet between Salem Y. M. C. A. and Linnfield.

PORT ORFORD LOCALS

W. H. Sheridan came down from the Wesley Hospital Thursday to spend the week end at Seaview. He returned Sunday to Marshfield. Mr. Sheridan is convalescing from an injury to his knee.

Mrs. L. R. Pugh and baby were guests Sunday at dinner at the home of Mr. and Mrs. N. P. Grant at Brushers creek.

R. G. McKenzie transacted business in Marshfield Wednesday.

E. L. White has returned from a short business trip to Salem while there he attended several forestry meetings.

E. J. Looney of Marshfield was the luncheon guest yesterday of Mrs. Mabel Gillings.

Miss Grace Fromm visited friends in Bandon Saturday.

Mrs. W. T. White, Jr., has entered the Keizer hospital at North Bend for medical treatment.

Mrs. W. T. White, Jr., returned Tuesday from Bandon where she had been receiving medical treatment.

N. B. Marsh was delivering battery lumber to Marshfield last week.

About twenty members of the local Woodcraft circle attended the quarterly rally in Coquille Monday night. Mrs. Ella Knapp and Mrs. Chas. Neuman were recently voted delegates to attend the Woodcraft convention in Klamath Falls the latter part of the month.

Highway Beauty Topic

Judge Robert Sawyer, ex-state highway commissioner, will discuss preservation of beauty spots along Oregon highways during the home garden program from KOAC at Corvallis, Thursday afternoon, April 23, at 3:30 o'clock.

County Clubs to be Entertained

The women's clubs of the county are to be entertained Saturday, May 2, at the McIntyre camp by the local Woman's Club. A covered dish luncheon will be served. Mrs. Bernal Forty and Mrs. L. R. Pugh were appointed the committee in charge.

READ THE Port Orford News

AND KEEP INFORMED OF THE

Progress of Development During 1931

Of The

Rich Natural Resources

Of

Southwestern Oregon

TIMBER — MINERALS

AGRICULTURE — DEEP SEA FISHING

RECREATIONAL PURSUITS

\$2.00 For 12 Month — \$1.00 For 6 Months

Subscribe Now!

Port Orford News

Port Orford, Oregon

Port Orford's Natural Deep Water Harbor THE KEY

To the Development of the Great Mid-Pacific Coast Empire

Depth of Water from 30 to 42 feet.

No Dredging.

No Sunken Rocks.

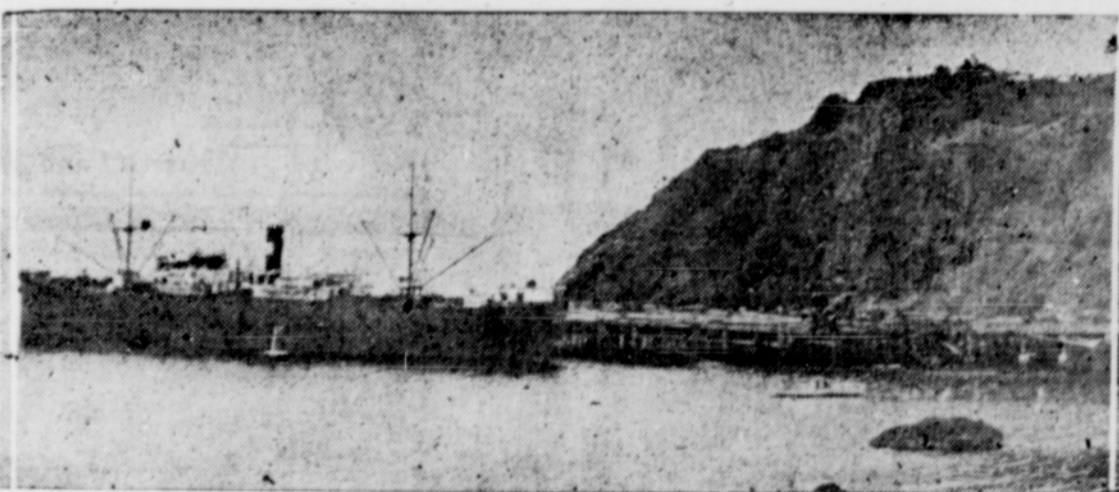
No Pilot Service.

Protected from North and Northwest Storms of Summer.

Requires Limited Protection from South and Southwest Storms of Winter.

Repeatedly Selected by Board of Army Engineers as Harbor of Refuge for Pacific Coast.

All Year Round Harbor For Deep Sea Fishing.



9300-Ton Vessel Loading in Port Orford Harbor.

The logical tidewater outlet for the great Mid-Pacific Coast Empire with its inexhaustible supply of rich natural resources consisting of 1-14 of all the standing merchantable timber in the United States, vast deposits of copper, iron, gold, chrome, cinnabar, coking coal, granite, marble and a wide variety of the more precious mineral; and its great diversity of agricultural products.

Port Orford Chamber of Commerce

PORT ORFORD, OREGON

Center of the Great Recreational Region of Southwestern Oregon.

All Year Round Harbor For Deep Sea Fishing.