

# Tai-o-Hai Called Port of Tragedy

## Once Gave Promise of Being Metropolis.

Washington.—Tai-o-Hai, island port of call of the homeward-bound United States fleet which has been visiting in the Pacific, is described as a "port of tragedy" in a bulletin from the Washington (D. C.) headquarters of the National Geographic society.

"Situated at the innermost point of a horseshoe bay which furnishes a reasonably well protected harbor," says the bulletin, "Tai-o-Hai, once gave promise of being a Pacific metropolis, a rival, perhaps, to Papeete, Tahiti, 750 miles to the southwest. The town on Nukahiva, largest of the Marquesas Islands, is listed as the administrative seat of the French government of the Marquesas; but the honor is a hollow one, for the Marquesas are rapidly dying off. The hundred thousand or more who peopled the eleven islands a century ago have dwindled to three thousand or four thousand.

### Rosy Future Seemed Assured.

"When France took the islands over in 1842 the future seemed rosy to the white settlers who went there. The islands teemed with superlatively healthy, brawny natives. The rainfall was abundant and vegetation grew rankly. Dreams of exceedingly productive coconut, cotton and vanilla plantations filled the heads of French adventurers. Tai-o-Hai was built with these dreams in mind, and stores, inns, churches, schools, and another accompaniment of civilization—a jail—sprang up.

"But things did not work out as had been expected. The Marquesas did not care to become plantation laborers. They had led lives of ease, spending their time in idleness, in gathering nature's fruits, and in war among themselves. Some unscrupulous planters tried rum and opium as inducements to labor. They brought a certain temporary success, but they helped to bring a speedy end to all hope for the survival of the Marquesan people. To drunkenness and soddenness were soon added the white man's diseases—diseases which meant little to the civilizations of America and Europe that had become largely immune to them, but which carried off the islanders like flies.

"Tai-o-Hai, which had waxed, as quickly waned. Today less than 150 people live in the village, and there is only a handful of whites. Abandoned buildings are on every hand: traders' shops, dwellings, an inn, a leper house. The once populous valleys back in Nukahiva have been abandoned to the rank growth; only the half-smothered platforms on which dwellings stood tell of their past use by man. In the valleys not wholly abandoned, the few survivors have moved near the sea for neighborliness.

"The Marquesas are in two groups. Nukahiva lies in the northern group. Seventy miles of ocean separate it from the group to the south. It was the southern group, discovered in 1595 by Mendana that was named Marquesas.

### Claimed for America.

"The northern islands remained unknown to the outside world for 200 years and were then discovered by an American, Captain Ingraham, a skip-

per from Boston. He named them the 'Washington Islands,' and they almost became American possessions. Capt. David Porter of the United States navy took possession of Tai-o-Hai bay in 1813 while harrying British ships in the Pacific; subdued the Nukahivian natives; and proclaimed the Washington Islands territory of the United States. But a mutiny of the ships he

left in the harbor put an end to his plan, and the United States never reasserted its claim.

"The Marquesas are of volcanic origin. They are extremely rugged, and, except the valley floors, there is no level land in them, the observer from shipboard who sails among them their sharp peaks, line behind line, cut the sky like the bizarre mountains of stage scenery.

"A number of the smaller islands are now entirely uninhabited. Unless some hardy race be brought to them, it will not be long before the Marquesas will be left virtually as they were millenniums ago, before the Vikings of the Pacific, in their huge canoes, came to claim them for mankind."

## Memorial to Ruskin Is Unveiled



Scene at the unveiling of a memorial to Ruskin at Chamoni, France. In the foreground near the right is seen Ignace Paderewski, the famous Polish pianist and statesman.

## Corsica Off Base, Sardinia Shifts

### Both Islands Have Moved, Says Cartographer.

Paris.—Following stories that a new island was about to appear at any moment in the Gulf of Biscay, it is now reported in the French press that the islands of Sardinia and Corsica have apparently shifted some ten meters toward the east. Scientific investigation of this strange fact has been going on for some time, with Paul Helbronner, cartographer, who started his career as an Alpine climber, playing the role of island locator. Writing in Le Quotidien, Jean Cabrerets gives this account of the wanderings of the two islands:

"Helbronner first started by scaling the mountain peaks of France, Italy and Switzerland, and was not long in discovering that the official map of the French Alps was far from being exact as compared with foreign maps, which were more precise. In July last he embarked for Corsica, in order to see if the Isle of Cynros was still in the same place that had been assigned it by the scientific geographers of the last century. There are even some doubts about the immobility of Corsica!

### Accurate Tests Made.

"Some time ago, following investigations by the Italian government, it was announced that the two islands—Sardinia and Corsica—appeared to have moved the appreciable distance of ten meters toward the east. M. Helbronner is now about to verify this. The difficulty has been the uniting of Toulon, or the island of Porquerolles, by a direct imaginary line to the island of Corsica. This line of view is no longer impossible today, as it would have been in the past. From Cape Corsica M. Helbronner succeeded recently, when the night was exceptionally clear, in distinguishing the powerful projector which the admiralty had installed on the hilltop of Le Faron in France.

"One may count on the ingenuity of this man, who, during many consecutive months kept watch on the mountain peaks for the favorable moment when the light permitted him to fix in a direct line of view the two highest summits of the Alpine range. His observations were carried out on 73 different peaks and were verified several times by photographic and scientific appliances. Monsieur Helbronner has all the necessary equipment with him in Corsica, and it is now a matter of awaiting the results of the tests he is about to carry out. His calculations may prove of invaluable interest to science. A triangulation of extreme precision may be able to determine if certain geologists are right in their assertion that Corsica, like other lands, moves across the surface of the globe somewhat like islets of foam on a cup of coffee.

### Similar Claims Made.

"The German professor Wagner brought forth a similar hypothesis within recent years. He affirmed that the superficial crust constituting the continents float above the central magma of our globe. Continents and oceans would therefore appear to be but a floating drapery thrown upon the body of the earth. And this clothing seemingly becomes torn at times. Thus, still according to Professor Wagner, the edges of the continents America, Africa and Europe should fit together, if it were possible to join them.

"It is obvious that it will be less difficult to observe the drifting of an island like Corsica—if there is a drift—when its actual position has been recorded in relation to the continent. However, it is hardly probable that the verification will be fulfilled in our time. Today it is difficult to say if Corsica has moved within the last half century or whether it has been wrongly recorded on the map by the early geographers.

## Students From Cologne Visiting the United States

Fifty students from the University of Cologne are visiting the United States to study economic and industrial conditions here, and to aid in restoring friendly relations. They are here seen being shown the Pierce Hall engineering building at Harvard.



## South Sea Stories Distorted, Is Claim

### Missionary Says Romancers Don't Give True Picture.

Tokyo.—A 2,000-mile shopping expedition from Jaluit, one of the South sea islands, to Tokyo, was recently made by Rev. C. R. Heine, a representative of the American board of missions, who has been stationed in this lonely, far-away post for 35 years. Out in the Marshall Islands, which is the group to which Jaluit belongs, where there are no automobiles and where one pays calls over a distance of 200 miles, Reverend Mr. Heine reports that considerable progress is being made among the natives under the supervision of the Japanese.

### Germans Are Deported.

Most of the Germans, he reports, left voluntarily at the beginning of the World war and the rest were deported when the war ended and the islands were put under Japanese mandate. Now there is only one other white on the island beside Doctor Heine, who is an Australian. There are no hotels, no motion-picture shows and no amusements, and the roads are mere paths, not more than eight feet wide, cut between the plantations and the jungle.

"No, the South sea islands are not exactly as painted by the romancers," said Doctor Heine, "as far as comfortable living is concerned. But it is quite true that the 9,500 natives of the Marshall group are nearly all well-to-do, because of an industrious development of the land. There is no great wealth and yet there is no poverty at all. Some of the native chieftains even have private yachts, which take them from one island to another, each one being between 60 and 100 miles apart. They may even have planes some day.

"But if one wants to call on a white friend in the South seas the nearest are in the Gilbert Islands, which are under the British mandate and some 300 miles away."

### Life Usually Routine.

"Life in the South sea islands is for the most part uneventful," says Doctor Heine, "and there was one period shortly after the World war for more than a year that the inhabitants were without newspapers from the outside

world. There had been stories circulated in Sydney and other quarters to the effect that the Germans had prepared elaborate fortifications and secret supply bases in some of the South sea islands.

"For this reason the Japanese and other allied powers prohibited the islanders from any communication with the out-world, and boats were allowed to stop only for the purpose of landing provisions. We heard vaguely about the war from the lips of the seamen, but it was not until everything was over that we were able to get definite news at all."

## CONSTRUCT HOSPITALS WITH REMAINDER OF RELIEF FUND

### Japan Makes Use of Earthquake Money.

Tokyo.—Construction of the two large memorial hospitals in Tokyo and Yokohama with the remainder of the proceeds of the fund raised in the United States by the American Red Cross for earthquake relief following the catastrophe of 1923 will be commenced early next spring.

The amount to be expended on the hospitals is approximately 8,500,000 yen.

For the Tokyo Fraternity Memorial hospital, a site valued at 625,000 yen has been purchased in Honjo, and the Fraternity Memorial hospital foundation has begun the work of training 100 nurses who will be used in the new building.

The hospital building and its equipment will cost about 2,375,000 yen and the foundation has set aside 4,000,000 yen as an operating reserve fund.

The building and equipment of the memorial hospital to be established at Yokohama will cost 500,000 yen, and this institution will have double this amount as its reserve fund.

The building for the memorial hospital in Tokyo will be an iron and concrete structure and is designed to be proof both against fire and earthquake. It will be completed within two years.

The American Red Cross society transmitted to the Fraternity Memo-

### New Use Discovered for Old Town Well

Decatur, Ark.—The old oaken bucket with its iron-bound staves of the days prior to discovery of germs has become an outlaw, but the old town well that went with it here and did valiant service in the pregerm days is being harnessed to the necessities of modernity.

The town well, driven here many years ago and which furnished drinks to thousands of hot, dusty travelers of the older generation, is to be used as a cooler for a modern, sanitary drinking fountain. Pipes from the town waterworks are being laid to the well and a coil reaching to the bottom is to be placed inside the shaft and under the water.

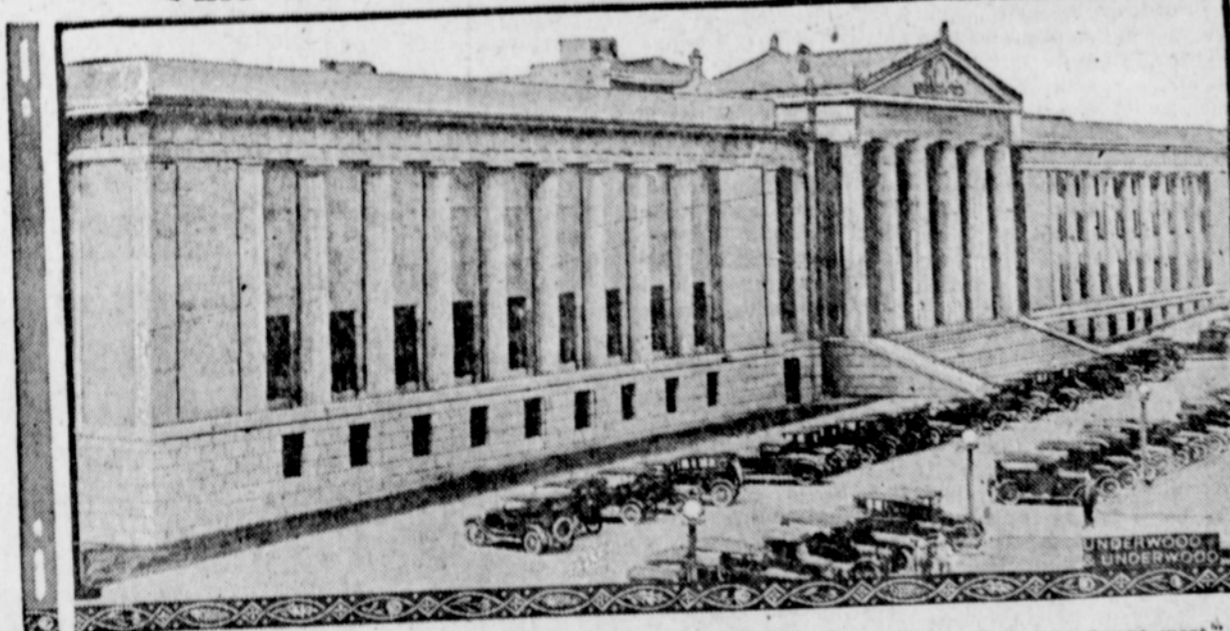
### Scorned Sheik Takes Clothes to New Mamma

Oakland, Cal.—A youth for whom police are searching demonstrated a unique method of squaring accounts, after a girl had rejected his advances.

Jeannie Yvonne told the young man, whose name the police are withholding, that she was "off him like a wet bathing suit," so when she was absent from her room a short time later, the youth loaded a suitcase with her clothes and left a message which read:

"This is a dose of your own medicine. I have a new mamma, who can use the clothes nicely."

## Fine War Memorial Building of Tennessee



The new War Memorial building erected in Nashville, Tenn., to the memory of the boys who "went west." This beautiful building, erected at a cost of over \$2,000,000, was dedicated during a state meeting of the American Legion. It houses the state executive offices of the legion.

## Smoot of Utah Now Clean Shaven



Senator Reed Smoot of Utah has shaved off his mustache, so this recent portrait of him is of especial interest. Besides being one of the most prominent Republican members of the senate, Mr. Smoot is a member of the American debt-funding commission.

### FIND CLIMATE HAS EFFECT ON SUICIDE

#### German Investigators Make Statistical Survey.

Berlin.—One of the most remarkable statistical surveys ever made, devoted to all phases of the subject of suicide, was made public here. The survey embraces all of Europe and is characteristically exhaustive and detailed. The German investigators establish scientifically that climate and suicide are mathematically related—that countries with variable climate produce the most suicides, and that these countries are found between 47 and 57 degrees east longitude and 20 and 34 degrees north latitude, which embraces central Europe.

There are more suicides in flat country than in mountainous. For central Europe, May and June are the most productive of self-destruction and the favorite days are Monday and Tuesday for men and Sunday for women. One-third of the suicides are committed at night, the rest in the forenoon and afternoon, with a very few in the early hours of the morning.

Twice as many Protestants in Europe ended their lives as did Catholics. Among the Jews suicide is on the increase, especially among those who are not orthodox, for in eastern Europe, among the pious Jews, practically no suicides at all are reported.

Four men commit suicide in Germany for every woman, but more women between the ages of twenty and thirty kill themselves than men. Divorce plays a big role in suicide in the reich, for there are ten men divorced who commit suicide to one married man, and five divorced women to one married woman.

It is established that women prefer drowning as a means of death, while men evince no marked partiality for any particular method.

The investigators insist that the movies influence suicides. They analyzed 250 pictures and found there were 97 murders, 51 divorces, 19 rapes, 45 suicides and 176 thefts. The investigators conclude from this that the movies have a harmful effect on those predisposed to self-destruction.

Germany has the highest record for child suicide, ten boys under sixteen and three girls for every million population, while France has three boys and one girl for the same number.