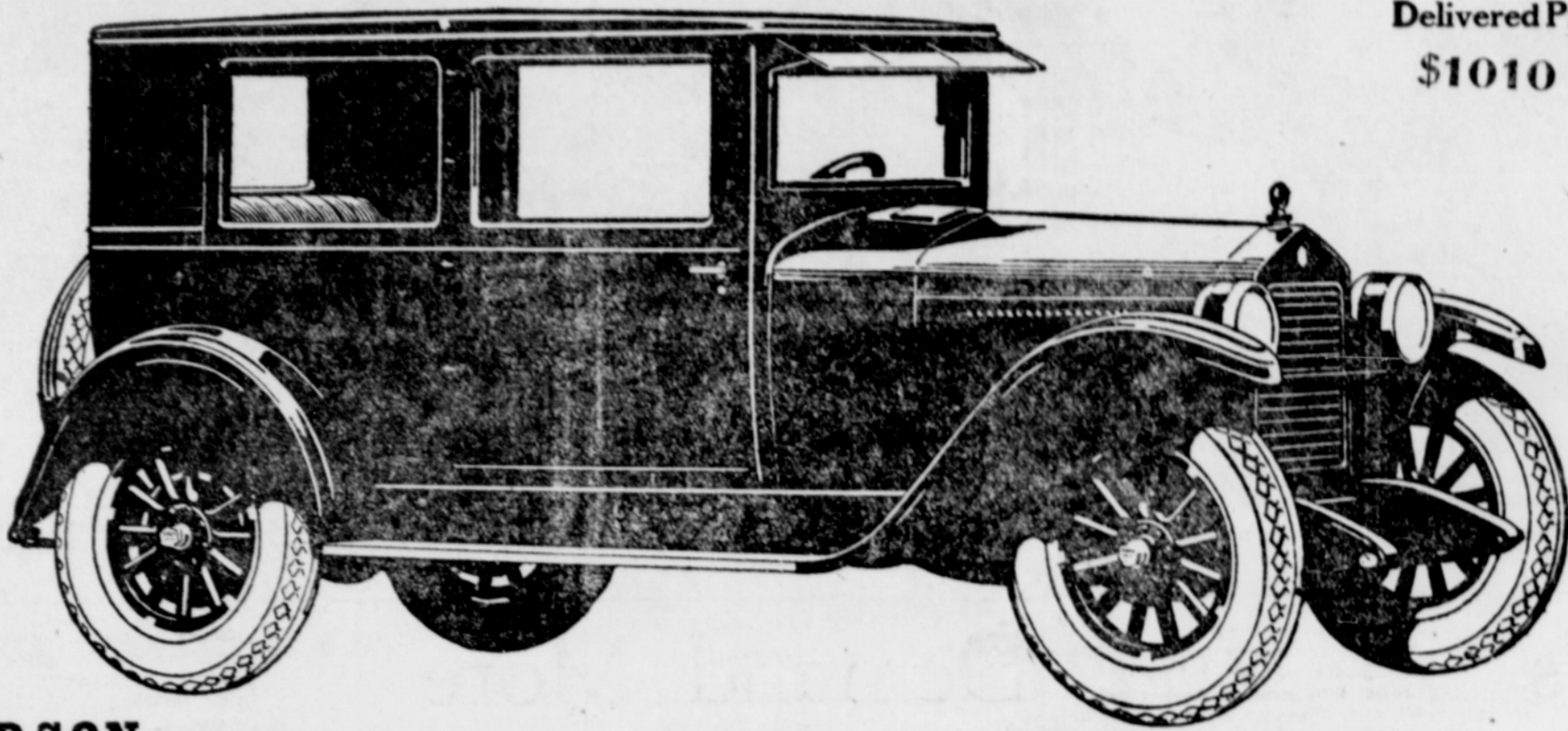


ESSEX-6-COACH



Delivered Price
\$1010

HUDSON
Super-Six
COACH
\$1475

Freight and Tax extra

None Can Copy Its Chief Value

The Chassis is Patented

The Most Important Trend in the Industry

Two of every three buyers of Essex cars come to it from those who formerly owned cars bought chiefly for their low first price.

It is striking recognition of the fact that with all its superior performance, good looks and riding comfort, Essex is also the most economical car to own.

Essex is a totally different type. It gives results no other car ever gave.

Low price, without disappointment in looks or reliability.

Economy without sacrifice of performance.

Stability and highest roadability without unnecessary weight.

The riding ease of large, costly cars. The handling ease of a bicycle. Utter simplicity in design.

The lowest maintenance cost, we believe, of any car in the world.

These qualities make it the most wanted and largest selling car of its class in the world.

Just as the Coach body and Coach name have been extensively copied, even by costliest cars, so must future mechanical design seek to approximate the results Essex gives.

But these cannot be copied. The chassis is patented. The patents which make the Super-Six the most enduring, smoothest motor and give it all advantages, also prevent any from copying its chassis.

Price considered Essex gives the utmost in transportation value. By all means learn the facts. Ask Essex owners. Take a ride. Note its smooth performance, not surpassed by any car. How simply it handles. How luxurious its riding ease. Then think of its price. And consider that two of every three buyers of Essex cars come to it from those who formerly owned cars whose only appeal is low cost.

Surely you cannot be satisfied with less than Essex offers. Its cost is but little more than cars of the lowest price.

Essex Holds Its Own in any Company—in any Service

Phil Gates, Dealer.

S. P. Railway Co.

TIME TABLE

Effective Sept. 7.
Trains will arrive as follows.

To Portland	
No. 355	5:53 A. M.
No. 354	8:37 A. M.
No. 358	11:18 " "
No. 352	2:40 P. M.
No. 360	6:32 " "
From Portland	
No. 351	9:33 A. M.
No. 357	11:10 " "
No. 359	2:40 P. M.
No. 353	6:00 " "
No. 355	7:13 " "

Special, Sunday only 8:05 p. m.

Z. Spangle
BARBER SHOP.
Ladies' Haircutting
Agency for Newberg Laundry
BBBS
Dayton, Oregon.

INSURANCE

Fire, Theft, Embezzlement, and Life. We care for your every need.

J. L. Sherman & Son

Dayton, - - - Oregon

Mrs. C. E. Mauts

Rooming House

"Best Rooms On Earth"

Dayton, - - - Oregon.

Dr. O. C. Goodrich

DENTIST

Office Phone Red 49

Dayton - - - Oregon.

T. A. Snook, M. D.

Physician and Surgeon

Office, Phone Red 79, Res. 78c3

Dayton, - - - Oregon.

Good Milk Good Service

THE DAYTON DAIRY

Deliver Twice Each Day

Milton A. Palmer

Dayton, Oregon, Phone 71x22

G. B. ABDILL

TINSMITH AND PLUMBER

Having installed a Landis Stitcher and Finisher, I am prepared to do all pipe repairing with neatness.

W. F. Abdill

Dayton, - - - Oregon

Truck Service

C. L. Christenson

Anywhere - - Anytime

Rates Reasonable

Phone 68X1, Dayton, Oregon

Anything in Insurance

Truck and Auto Insurance a specialty

Ask for Rates

C. S. Lewis

Phone 9x10 Dayton, Oregon.

Ladd's Funeral Home

To Serve Humanity Better

Day and Night Phone Blue 90

McMinnville, - - - Oregon

V. H. BALLARD

Watchmaker and Jeweler

Agates ground and mounted

A fine line of Jewelry and Silverware at prices that are right.

You know you can have an electric Washing Machine in your home if you will. It is yours for the asking at a price that is right and on terms which you can easily meet if you want one.

The Electric Washer does the work quickly and well at a cost insignificant. The family washing can be done for twenty-five cents a month. The heavy work is done without manual effort in one quarter of the time used in the old way, and give you time for leisure, rest, reading, or social duties.

Electricity can be employed in many useful and serviceable ways in the home but to a greater advantage in the use of the Washing Machine. We shall be glad to give you a demonstration, let you try one to satisfy yourself of its quality, service and merit.

Electric Supplies & Contracting Company

"It Serves You Right"

Newberg, Oregon.

Phone, Blue 34

Water Doubles Tomato Yield

An irrigation plant operated by electricity is being installed on the farm of Fleischman and Monahan on Kiger Island. So good results were obtained by these vegetable gardeners with a 2 1/2 inch outfit last year that they are installing a bigger outfit this year. Irrigation more than doubled their yield of tomatoes, according to their report.

The new outfit consists of a three-horse power motor directly connected to a five-inch centrifugal pump. Water will be pumped from two wells that were sunk on the place last year. Leveling has been done on two fields in preparation for irrigation, and more work will be done this fall so that river water can be used.

Skill in Handling Rod Aids In Spray Problem

Only a few fruit growers in Oregon are getting maximum results from their spray program. This is not necessarily a result of applying wrong materials, having

poor equipment, or spraying at the wrong time, but a lack of skill in handling the spray gun or spray rod, reports H. P. Burns, professor of botany and plant pathology at the agricultural college.

The usual difficulty is reaching the uppermost parts of the tree. Many growers who pride themselves on their thoroughness would find if they checked up carefully they are missing many branches or hitting from only one direction. This prevents the complete covering of the foliage and fruit with the spray material.

Diseases and insects develop in the uppermost part of the trees as the result of this lack of thoroughness. They then spread to parts below that are not thoroughly protected. It is not enough to guess that the tree has been covered, Professor Burns declares. The operator must know that this has been accomplished.

Miss Margaret Griffith returned to her home in Salem, Saturday and Mr. Berkeley returned to his home in Pendleton that day.

Two-Piece Dresses Score a Triumph



Spring has brought with it a rival of the one-piece day frock—and fashion has given it a warm welcome. In fact, the two-piece dress has scored a triumph. It is chic, simple and youthful and is developed in many sorts of dress fabrics—with kasha and silk alpaca in great favor. It is pictured here in the latter material.

Solution of Puzzle No. 27.

