

CONTINUED FROM PAGE 9

Albertina Kerr

Albertina Kerr provides a wide range of services for individuals with mental health and developmental disabilities, empowering them to lead fuller, self-determined lives.

Art from the Heart Gallery

Artists' creations

Albertina Kerr's year-round gallery features items made by adults with developmental disabilities, with 70 percent of the sale going to the artist and 30 percent to additional art supplies. Find creative art and gifts such as cutting boards, mixed media, pottery, screen-printed items and more.

3505 NE Broadway St.

Albertina Kerr's Port City Holiday Sale

Noon to 5 p.m. Dec. 10, 11, 17 and 18
2124 N Williams Ave.

Albertina's Place

All proceeds from shops inside Albertina's Place go to support Albertina Kerr's programming.

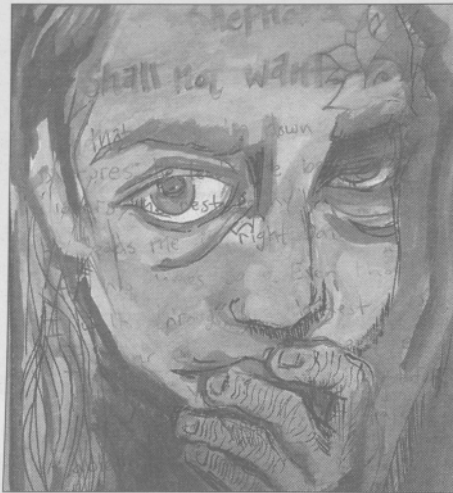
424 NE 22nd Ave.
albertinakerr.org

Fine gifts and holiday decor

Inside the Old Kerr Nursery Building, this shopping center contains Albertina's Jewel Box, with Christmas decorations, vintage and fine jewelry, and accessories; Albertina's Heirlooms, with antiques and collectibles; Albertina's Closet, with thrift store offerings; and Albertina's Kitchen, for a bite to eat.



PHOTO BY JOSEPH GLOBE



COURTESY PHOTO

ReBuilding Center

This nonprofit offers affordable, used building materials with the goal of building community through reuse. It moves roughly eight tons of materials through the warehouse each day. Rather than going to the landfill, these materials are sold back to the community for reuse at 40 to 90 percent below market value. Profits are reinvested back into the community through its Community Outreach Program.

3625 N Mississippi Ave.
rebuildingcenter.org

Hands-on DIY classes

Give the gift of craftsmanship this holiday season with a gift certificate for a class using salvaged building materials at the ReBuilding Center. Participants can build their own table, bench, frame or even a drum. Check the website for current class offerings.



COURTESY PHOTO

p:ear

This nonprofit builds positive relationships with homeless and transitional youths through education, art and recreation. Each year, p:ear's programs serve nearly 900 people ages 15 to 24.

338 NW Sixth Ave.
pearmentor.org

Paintings & sculptures

From 6 to 8 p.m. on First Thursdays, p:ear opens its gallery, featuring prints, sculptures, paintings and sketches created by homeless and transitional youths and globally recognized artists. Youth artists receive 90 percent of proceeds from the sale of their art, with the remaining 10 percent going toward the purchase of art supplies to stock p:ear's art studio. At least 50 percent of proceeds from sales of renowned artists go directly to support p:ear. Private gallery viewing is available by appointment. Contact William at william@pearmentor.org.



COURTESY PHOTO

Pieces of Sellwood

Sales from the Sellwood Bridge Keepsakes project benefits the Sellwood Middle School PTA. The PTA raises money to support the library, band, marimba and PE programs, provides many after-school programs and coordinates community services.

7901 SE 13th Ave.
rumpusevents.com/sellwood-bridge-products

Portland memorabilia

Blue Kangaroo is selling beautiful keepsakes of the original Sellwood Bridge. Items include an authentic chunk of the historic bridge nestled inside a custom-designed box and rebar from the historic bridge forged into bottle openers, coat hooks, fire poker, garden stakes and dinner bells. Rebar items are hand crafted by Oaks Bottom Forge. All keepsakes come with a seal of authenticity.

Cards for Kids

For 25 years, Cards for Kids has been an annual fundraiser for Oregon Health & Science University's Doernbecher Children's Hospital, organized and produced by Friends of Doernbecher volunteers. All proceeds benefit OHSU Doernbecher.

Order online at ohsu.edu
or call 800-774-5857



COURTESY PHOTOS

Holiday greeting cards

This program transforms artwork collected from OHSU Doernbecher patients, their siblings and professional artists into classic greeting cards for the holiday season. Greeting card 12-packs may be purchased year-round. Custom cards, for corporate or personal use, are also available.

PHOTO BY JOSEPH GLOBE

Community Cycling Center

This nonprofit is dedicated to broadening access to bicycling and its benefits for all Portlanders. It offers earn-a-bike programs for low-income adults and children where safe riding and maintenance techniques are taught.

1700 NE Alberta St.
communitycyclingcenter.org

For bicyclists

The Community Cycling Center's Bike Shop sells fully refurbished and as-is bicycles, new and used bike parts, accessories and tools, as well as gift certificates good for products or bike repair services.

GIFT GUIDE CONTINUES
ON PAGE 11

Friends of Trees

This nonprofit has planted half a million trees in the Portland-Vancouver and Eugene-Springfield metro areas since 1989.

3117 NE Martin Luther King Jr. Blvd.
friendsoftrees.org



Plant a tree

Holiday-themed gift tree certificates and tree packs start at \$35. When you purchase a gift tree, you'll receive a holiday-themed certificate packaged to present to the recipient. Friends of Trees will invite you and the gift tree recipient to help plant the tree in the recipient's honor in the Tualatin River National Wildlife Refuge in the spring. Yard and street trees also available.