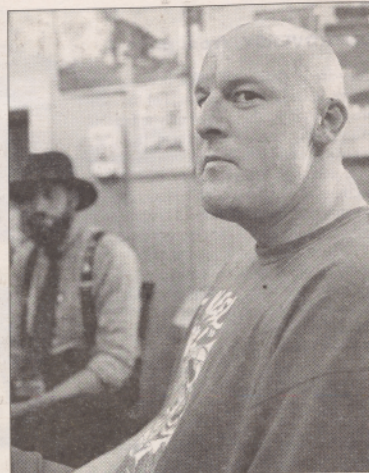


For the RECORD

A compilation of facts, large and small, about our community

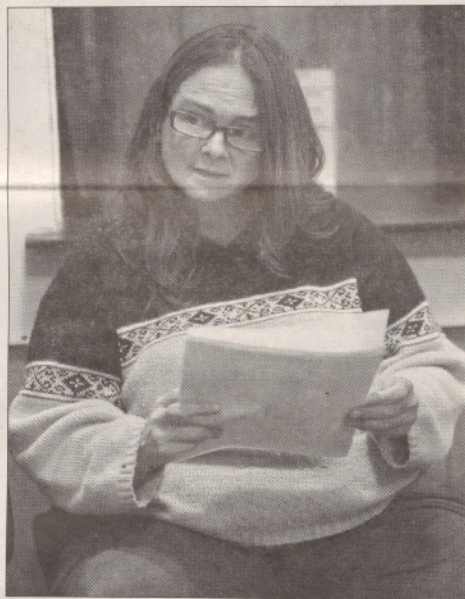
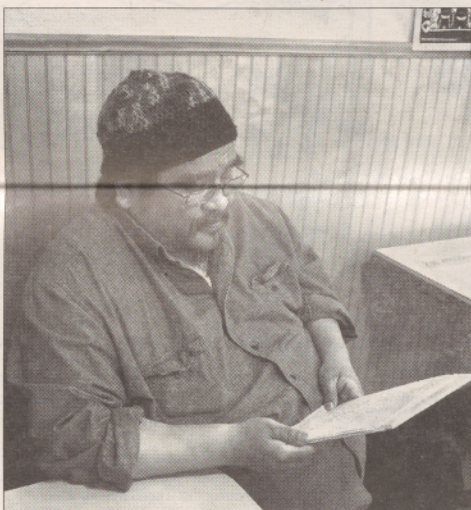
- Number of children in 2012 who were uninsured in Oregon: 8,389
- Number of children who were in poverty in 2012 in Oregon: 36,441
- Percent of children in Multnomah County child welfare custody who are Native American: 21
- High school graduation rate for Native Americans in Oregon: 50.8
- People in Oregon who received food stamps in March 2014: 793,260
- Number of people over age 60 who received food stamps in March 2014 in Oregon: 73,845
- Number of Oregonians under age 5 who received food stamps in March 2014: 87,624
- Number of animals seized or removed from harm's way in 2013 by Oregon Humane Society: 538
- Number of low/moderate income parents the Black Parent Initiative (BPI) serves annually: 255
- Percentage of parents served by the BPI who are single parents: 70
- Hours of parent coaching provided by the BPI annually: 2,000
- Number of calls to 211 Info between October and December 2013 in Multnomah County: 15,318
- Percentage of those calls about energy assistance: 10
- Annual average number of clear days for Portland: 68
- Average number of clear days for month of May in Portland: 5

Source: Children First for Oregon; The Native American Community in Multnomah County: An Unsettling Profile by Coalition of Communities of Color and Portland State University; Partners for Hunger Free Oregon; Oregon Humane Society; Black Parent Initiative; 211 Info; National Climatic Data Center



Poets in the house

On Sunday, May 4, a group of Street Roots authors gathered at Sisters of the Road Cafe to share their poetry from the new Street Roots poetry anthology "I Am Not a Poet." The intimate event provided a space for reflection and connection. "I Am Not a Poet" includes some of the best poetry and art published in the newspaper over the last 15 years. Hard copies are available at Reading Frenzy or at iamnotapoet.org.



Photos by Al Stern

VENDOR WORK ADS

Bicycle delivery by Farmer Shaun
Small packages \$2/mile
Large packages \$5/mile
Extreme feats and impossible tasks on a case-by-case basis. Bicycle detailing \$25/bike. 971-222-9938.



Real food for real people.

3029 SE 21st Avenue
(503) ORGANIC (674-2642)
SNAP/EBT accepted
Weekly Farmers' Market, Wednesdays 2-7pm
www.peoples.coop



Answers to puzzles on page 15

L	T	I	N	E	S	W	E	S	O	A	B	E	V	O	L	E	B	E	E	O
N	V	A	N	B	E	G	A	N	F	O	O	T	D	A	M	A	F	O	O	T
U	R	T	I	C	A	R	I	A	G	R	E	E	A	G	R	E	E	A	G	R
N	I	D	D	L	E	G	R	O	U	N	D	M	I	D	D	L	E	G	R	O
A	C	T	I	O	N	G	O	N	O	O	C	T	T	E	D	S	M	I	S	G
C	R	E	I	N	S	I	N	O	I	N	O	I	N	S	E	S	T	E	R	O
C	A	V	E	R	I	N	N	E	B	E	R	E	A	V	E	C	A	V	E	R
A	G	O	R	A	T	R	I	O	L	E	T	A	G	O	R	A	T	R	I	O
T	A	C	O	H	O	N	O	P	O	N	O	B	I	A	S	T	A	C	O	H
S	M	A	L	L	E	F	O	R	T	U	N	E	S	M	A	L	L	E	F	O
T	I	T	L	E	M	E	N	N	O	N	I	T	E	C	L	O	U	D	E	R
C	L	O	U	D	E	R	E	I	R	E	C	L	O	U	D	E	R	E	I	R
V	I	A	L	D	O	R	M	V	I	A	L	D	O	R	M	V	I	A	L	D

6	4	5	9	7	2	1	3	8
7	2	3	8	1	5	6	9	4
9	8	1	6	3	4	2	7	5
3	6	8	7	2	9	4	5	1
2	7	4	1	5	8	3	6	9
5	1	9	4	6	3	8	2	7
4	9	2	3	8	7	5	1	6
1	5	7	2	4	6	9	8	3
8	3	6	5	9	1	7	4	2