

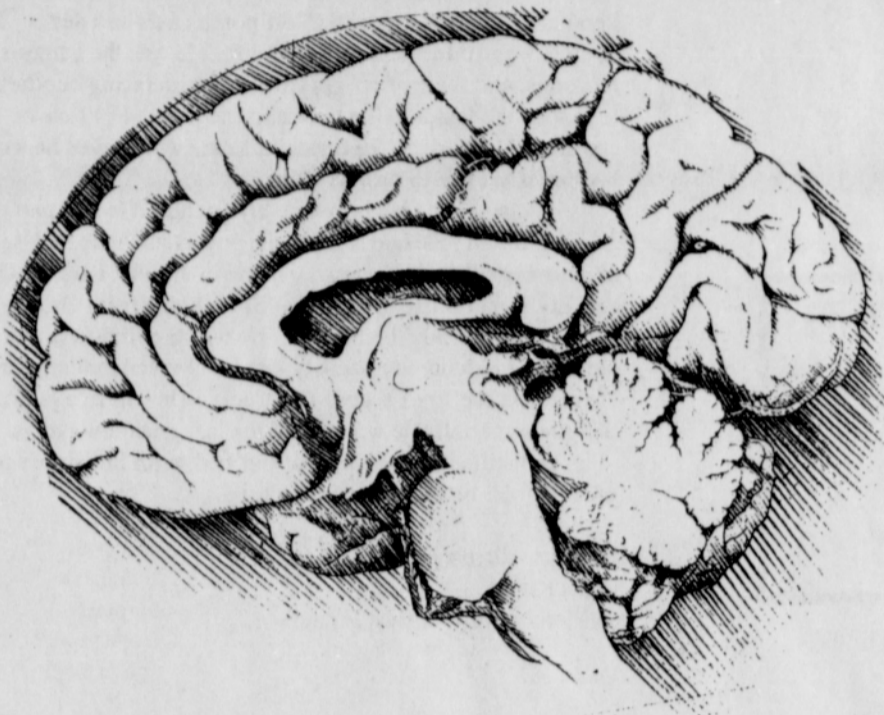
UPPER LEFT EDGE

VOLUME 7 NUMBER 6

NOVEMBER 1998

FREE!

UPPER LEFT COAST PRODUCTIONS ▲ P.O. BOX 1222 CANNON BEACH OR 97110 ▲ 503 436 2945 ▲ bhults@pacifier.com ▲ www.upperleftedge.com



This is your brain.

In the early seventies North Russel St. in Portland was a neighborhood of empty stores, cheap rents, storefront churches, and a couple of bars. The Swinging Anchor served fifty cent pitchers, the White Eagle served hard liquor. Actors, musicians, and artists rented a couple of houses next to the freeway, to be close to the Storefront Theatre, a building now occupied by the Widmer Brewery. As they walked by the White Eagle, a hangout for the workers building the Fremont bridge at the time, they would often hear the owner, one Tony Ferroni, yelling at some hapless customer. Needless to say they steered clear of the Eagle for the most part. But, often there comes a time when nothing will do but a stiff shot. Well, it came to pass that one night the cast and musicians from the Storefront production of "Girl of the Golden West" stopped in the Eagle after a rehearsal. Ferroni eyed the instrument cases and asked what kind of music they played. They explained by playing hot jazz, jug band, & blues into the wee hours of the morning. The following day Tony waylaid a couple of the musicians, and went on an on about what fun he'd had the night before, and how he wanted to have music every night from then on, and they were going to be the house band. Mr. Ferroni was from New York, he was big, people thought he was in with the mob, so 'no' was not a word he was familiar with. The musicians began calling themselves the "Skinny-dip Skiffle Band". Later they changed some personnel and took the name The Fly By Nite Jass Band. The band was a four piece, with Kenneth "Turtle" Van deMarr on guitar, kazoo and vocals; John Ward on harmonica, jug, kazoo, and vocals; John Dominiogoni on washtub bass, kazoo, and vocals; and Billy Hults on washboard. They played hot jazz from the twenties, Django Reinhardt material, dance music. They played every Tuesday night at the White Eagle for several years. They attracted local musicians like Jack (the ghost) Howell, who was the regular piano player at the Benson Hotel's London Grill, and the legendary Monti Ballou, banjoist extraordinaire, who would sit in or sometimes just come to watch the show. It was something of a show. The Jass Band would often come on stage wearing tuxes and tennis shoes, or Hawaiian shirts, they all had shoulder length hair and combined with the unusual instrumentation, snappy patter, and high energy music it was always something to see. The White Eagle became the place to drop by Tuesdays, and the favorite spot of bartenders and waitresses, and musicians to make it for last call. In those days Taverns had to close at One AM but hard liquor bars could stay open until 2:30, and the band played until two. Last sets at the White Eagle became legendary. There was a line at the door at 1:30 AM. Someone had to leave before someone else could go in, or more likely Tony would throw someone out. Bands, singles, duos, lined up to play in the old brick building, with its beautiful tile floors covered in peanut shells, its back bar that came around the horn, & its crazy owner. The Eagle became the home of the Holy Modal Rounders when they moved from the east coast, and their band bus was often parked out front, and served as backstage. In those days there was a working open foundry right next door to the Eagle, that would be pouring molten metal all night, while folks in tuxes, fancy gowns, and long haired hippies milled around outside the chain link fence. It was quite a scene. Lawyers and Bikers, Blacks and Whites, Artists and Musicians, Working Men and 'Working' Women, politicians and current celebrities dropped by, and some became regulars.

The Fly By Nite Jass Band made an EP record and promptly broke up. The Rounders moved their bus to Euphoria, and the scene moved on, but The White Eagle has continued providing live music for over twenty five years, and holds a special place in the hearts and minds of musicians and fans alike, and it seems it always will.

The McMenamins have purchased the White Eagle, and will be bringing back The Fly By Nite Jass Band for the grand opening on Halloween. It promises to be an interesting evening.

Billy Hults

This is your brain by Michelangelo.

We were sitting in the bookstore when a customer commented on the coffee cup we have that shows Michelangelo's Sistine Chapel painting. He related that when he was studying for his medical degree he was cramming for a test on the brain. After hours of study he decided to give his eyes a rest and started browsing through some books on art, when he came upon the famous painting. "I started naming the parts of the brain that I could see in the painting, and realized that Michelangelo had painted God as the human brain." Cool, huh?



MOONS & TIDES

CORRECTED FOR PACIFIC BEACH TIDES

NOVEMBER - Tides

WASHINGTON AND OREGON COAST TIDES
STANDARD TIME

DATE	HIGH TIDES		LOW TIDES					
	time	ft.	time	ft.				
1 Sun	9:50	8.7	10:15	7.9	3:31	0.6	4:14	0.4
2 Mon	10:31	9.2	11:10	8.2	4:20	0.6	5:04	-0.4
3 Tue	11:12	9.6			5:06	0.8	5:53	-1.1
4 Wed	0:04	8.3			5:52	1.0	6:42	-1.5
4 *	11:53	9.9						
5 Thu	0:57	8.3	12:35	9.9	6:39	1.4	7:30	-1.7
6 Fri	1:50	8.1	1:18	9.8	7:26	1.7	8:19	-1.5
7 Sat	2:43	7.9	2:03	9.3	8:16	2.1	9:09	-1.1
8 Sun	3:39	7.7	2:53	8.8	9:09	2.5	10:02	-0.6
9 Mon	4:37	7.5	3:49	8.0	10:08	2.9	10:59	0.0
10 Tue	5:39	7.4	4:55	7.4	11:16	3.0		
11 Wed	6:41	7.4	6:12	6.9	0:00	0.5	12:30	3.0
12 Thu	7:38	7.7	7:29	6.7	1:02	0.9	1:42	2.6
13 Fri	8:29	8.0	8:36	6.8	2:01	1.2	2:46	2.0
14 Sat	9:13	8.3	9:34	7.0	2:52	1.4	3:39	1.3
15 Sun	9:51	8.6	10:24	7.2	3:38	1.5	4:25	0.7
16 Mon	10:25	8.8	11:10	7.4	4:19	1.7	5:07	0.3
17 Tue	10:57	8.9	11:53	7.5	4:57	2.0	5:45	-0.1
18 Wed	11:26	8.9			5:33	2.2	6:21	-0.3
19 Thu	0:34	7.5			6:08	2.5	6:55	-0.3
19 *	11:55	8.9						
20 Fri	1:14	7.5	12:24	8.9	6:42	2.7	7:28	-0.3
21 Sat	1:54	7.4	12:55	8.8	7:17	3.0	8:01	-0.3
22 Sun	2:34	7.4	1:28	8.7	7:53	3.1	8:35	-0.1
23 Mon	3:15	7.3	2:07	8.5	8:33	3.3	9:12	0.1
24 Tue	4:00	7.2	2:52	8.2	9:20	3.4	9:55	0.3
25 Wed	4:50	7.3	3:47	7.7	10:18	3.5	10:47	0.6
26 Thu	5:45	7.4	4:58	7.3	11:28	3.4	11:47	1.0
27 Fri	6:41	7.8	6:23	7.0			12:44	2.9
28 Sat	7:34	8.2	7:46	7.0	0:51	1.2	1:56	2.2
29 Sun	8:25	8.8	8:59	7.3	1:54	1.4	3:00	1.2
30 Mon	9:12	9.4	10:03	7.6	2:52	1.6	3:57	0.2

**11th ANNUAL
MINIATURE SHOW**
featuring
DAVID PHILLIPS - DRAWINGS
TED KELTCHNER - SCULPTURE

Nov. 7 - Dec. 9, 1998
Artists Reception Nov. 7th at 6pm

With a group show to be juried by
ANDRIA MARCUSSEN
C. B. Galley 1064 S. Hemlock, 436-0744

The world is proof that God is a committee.
Bob Stokes

Steve's Maintenance
Licensed
Specializing in:
Environmentally Friendly
Window Cleaning
Steve LaMontagne
P.O. Box 669
Cannon Beach, OR, 97110
(503) 436-0942

Which is it, is man one of God's blunders or is God one of man's? Nietzsche

BASEBALL

Damned Yankees!! Spring training begins in March next year. The Cubs will be in Tempe, Arizona, and if there is any way to manage it so will your beloved editor. Go Cubbies!!!



UPPER LEFT EDGE NOVEMBER 1998