

JUNE'S GARDEN

When I first planned my garden I needed a barrier of trees, shrubs and fences to ward off the strong salt-laden winds, as I live close to the ocean. Along the south fence in the back yard I planted pines, deciduous trees and shrubs. In time this created a woodland-like area where I added perennials and bulbs to bloom in succession throughout the year.

The following perennials and bulbs have grown in this part of the garden for years with little care other than dividing them every three years or more. When I divide the plants I add humus to the soil and in the spring I top dress with balanced slow-release fertilizer, not allowing the granules to touch the leaves or stems of the plants, since scorching may result.

Oct-Nov: Hardy Cyclamen herderifolium's pink/white flowers that look like shooting stars appear, followed by their marbled green-grey heart-shaped leaves. Since the flowers and leaves completely disappear by spring, their fall blooms are a bonus surprise. Hardy Cyclamen are easy to grow in dry, shady areas among the roots of trees and shrubs. When first planting cyclamen, prepare the hole with humus well below the planting hole. Plant tuber so that it will lie with its upper surface just visible at soil level. After foliage dies back in spring, apply layers of leaf mold, which will break down to supply nutrients for the tubers. In a few years these plants will multiply.

Jan-Feb: Caltha palustris (Marsh Marigold). Bright yellow single-petaled flowers with shiny round leaves appear. Caltha are perennials, leaf and flower growth about 1-1/2 to 2 ft. tall. They grow best in a moist situation. Mine have spread throughout this part of the garden. Their flowers and leaves also disappear by summer.

Anemone blanda stems rise 2-8" from tuberous roots. Finely divided leaves, covered with soft hairs. The variety I have is 'Blue Star,' blue flowers. There are also 'Pink Star,' pink; 'Radar,' purplish red; and 'White Splendor,' which is white-flowered. These last three bloom later in spring.

Feb-Mar: Scilla (Wood Hyacinths). White, pink and blue bell-like flowers carpet the whole area. Left undisturbed they readily increase to form flowering drifts of color under the trees.

Galanthus (Snowdrops), 2' tall white flowers with tiny green dots and two to three basal leaves. These bulbs also will form large colonies if left undisturbed.

Late Feb-Mar-Apr: Narcissus bloom throughout these months. (Daffodils come under the heading of Narcissus in garden books.) There are many varieties of narcissus that bloom from February into May. Check with a nursery or catalogs for choosing continuous blooms. I have many varieties from 'February Gold' on to 'King Alfred,' white flowered 'Thalia,' sweet-scented 'Actea,' just to name a few. Many varieties will naturalize, but are easily divided after the foliage dies back. Narcissus are best planted in informal drifts.

Apr-May: Tulips. Here again, the list is endless for choice. Choose bulbs that will continue to grow for several years. 'Darwin Hybrids,' once planted and given a boost of bulb fertilizer when the leaves first appear in the spring, should return for years.

A plant that was given to me, called 'Wood Violets,' has seeded through this area, even spilled over into the bordering gravel paths. The small flower is pink with heart-shaped leaves. It blooms from spring into summer.

May-Jun: Rhododendron. The two I planted are 'The Hon. Jean Marie de Montague' (commonly called Maria), bright scarlet red, followed by 'Lems Monarch,' with flowers of pink and white with ruffled edges.

Digitalis (common Foxglove), which is a biannual, some years has seeded in this same woodland area and blooms in June. It is not a plant to depend on year after year, but some years I save the seed to broadcast and at times am rewarded in two years with blooms of their tall pink flowers.

May through July: Saxifraga umbrosa (London Pride) bloom a cloud-like mass of delicate light pink flowers on 9-12" stems, contrasting with the rosettes of fleshy leaves. The rosettes of leaves continue to grow all year long and are excellent for use in borders. They will spread to make large clusters of patterned leaves. These plants also grow in moist soil.

HOPE L. HARRIS

LICENSED
MASSAGE
THERAPIST

503/ 325-2523



Cyclamen



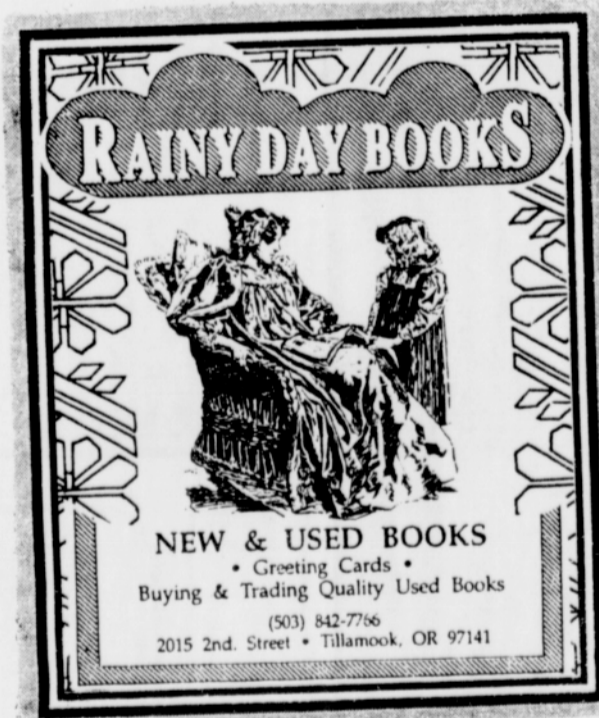
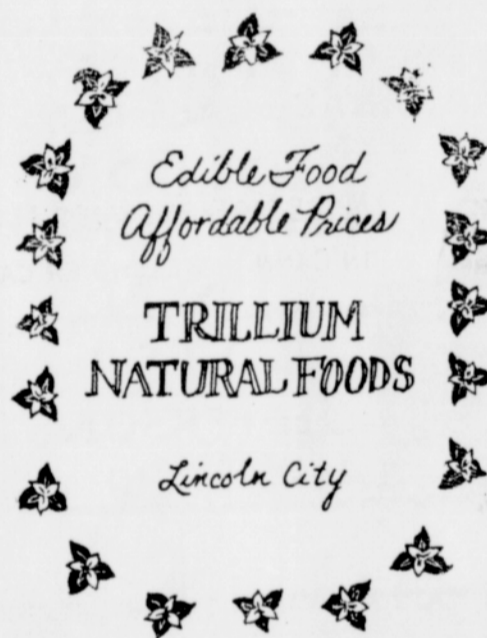
June through October: Low-growing Campanula portenschlagiana, bluebell-like flowers continuously bloom through midsummer into autumn. This plant will spread; mine intertwines through the ferns nearby. The flowers and leaves die back by late fall.

Astilbe arendsii, 'Rheinland,' 2 ft. high. This variety has a pink bloom and fern-like foliage. The seed-heads may either be left standing to decorate the garden in winter or cut to use in dried flower arrangements.

Oct: Rounding out the year's blooms, Schizostylis coccinea (Kaffir Lily) coral-colored 1-1/2 to 2 ft. tall, are still in bloom when the cyclamen's first flowers appear in October.

Hardy Fuchsia, Escallonia, Hydrangea, and Alstroemeria also bloom throughout the summer in this same area, and the various textures and shades of green of ferns, trees and shrubs complement the plants I have listed.

Please send your comments, questions and suggestions to June's Garden, PO Box 74, Cannon Beach OR 97110.



PACIFIC NORTHWEST Gardener
THE newsletter for people who garden in the Northwest

- Stories by and about garden experts: Ann Lovejoy, Barbara Ashmun, Ted Swensen, Connie Hansen
- Stories on what Northwest gardeners are doing and growing — tips that will work for YOU
- Big calendar of garden events throughout the region
- Book reviews, humor, new garden ideas & products

Available free at garden centers and bookstores from Seattle to Ashland, Warrenton to Florence. Or by subscription at the incredible value of \$12 a year.

To subscribe:
Send check for \$12 (for 12 issues a year), with name and address, to:

Pacific Northwest Gardener
PO Box 19638
Portland, OR 97280

Pacific Northwest Gardener:
The Best News Yet about Gardening in the Northwest

Wonderous Willow Works
WWW
SWINGS BENCHES ETC.
Bill Goulardt, Owner
For Custom Hand-Crafted Work call:
(503) 368-5303
Serving the West!

"Be happy. It is a way of being wise." - Colette

Give a memorable gift to yourself or to those you love.

A GIFT CERTIFICATE to the

BENJAMIN YOUNG INN

Bed and Breakfast

3652 Duane Street

Astoria, Oregon 97103

800-201-1286



will be lovingly remembered for years to come.

Gift Certificate
1-800-201-1286

HILL HOUSE
DELI CAFE

North Hwy. 101
Nehalem, Or. 97131

(503) 368-7933