

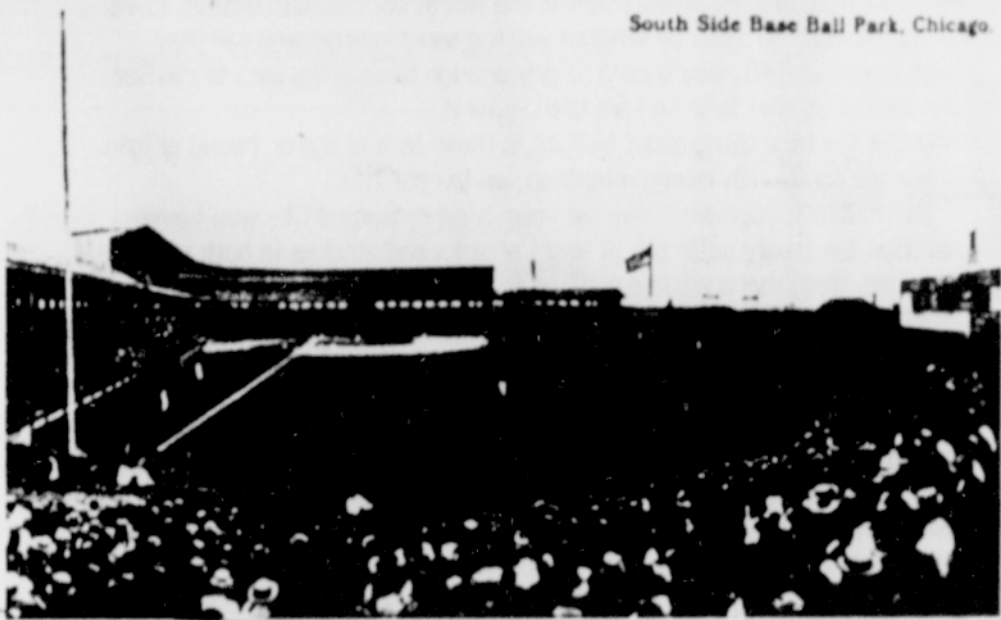
# MR. BASEBALL



David Letterman is quoted as saying that 9 Haitians escaped by boat, took a bus to Chicago and beat the Cubs 6 to 3. Thanks, Dave. —ed.

## Demolition, Blasphemy and Hyperbole Part 2

South Side Base Ball Park, Chicago



**Comiskey Park, Chicago** - The home of fluctuating visitors bull-pen mounds, exploding scoreboards, Bavarian and Mexican restaurants, Diamond Vision, bleacher showers, beer halls, and Disco riots. Just what place this ancient stadium occupied in the hearts of purists remains unclear.

21—Crosley Field, Cincinnati, Ohio, "Home of the Cincinnati Reds"



**Crosley Field, Cincinnati** - Another park with a steep incline in front of the fences, this in all fields, most pronounced in left. The center field fence was concrete for 13.5 feet, with 9.5 feet of plywood on top that was out of play for two years. Thus, many home runs were judged by the umpires on the quality of the sound they made hitting the wall.

**League Park, Cleveland** - An outfielder's nightmare. Steel beams in the walls caused bizarre caroms which were mainly unpredictable. Many a line drive to one corner ended up in the other. There was also a good sized gap under the center field scoreboard that allowed balls in play to roll under it. Imagine the indignity of watching Tris Speaker crawling in the dirt like a mongoose in pursuit of the elusive horsehide.

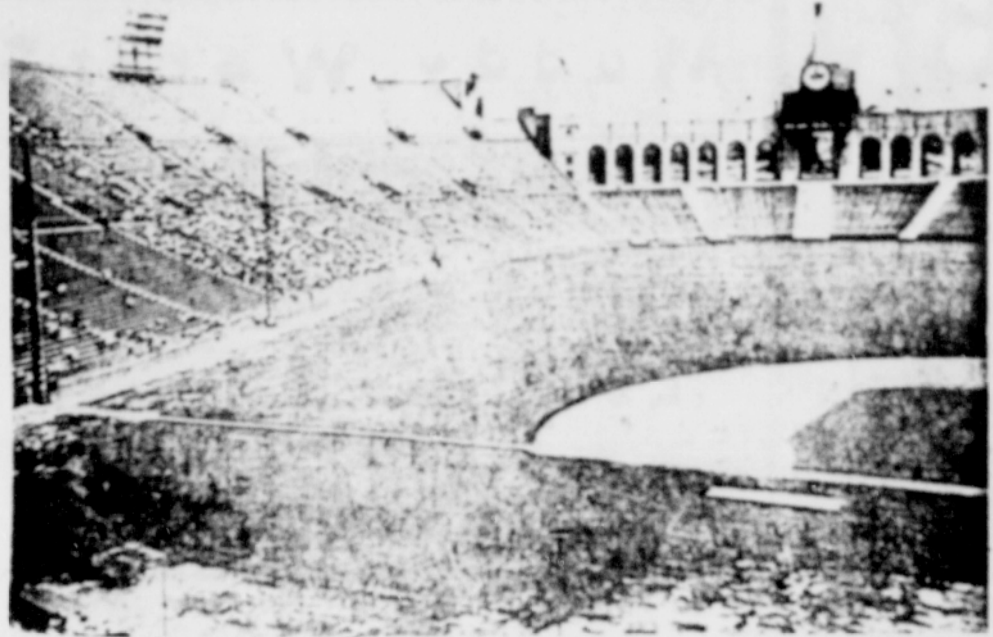
**Grove Street Oval, East Orange, N.J.** - The outfield dimensions were defined by poplar trees, a scoreboard, tennis courts, and a 4-foot-high water fountain.

**Colt Stadium, Houston** - Routine maintenance chores here included heavily spraying the entire field with insecticide to suppress the mosquito population. Some of these were so hefty that, by some accounts, they resembled winged hamsters.

**Municipal Stadium (now Satchel Paige Memorial Stadium), Kansas City** - Left center light standard was in the field of play, in front of the warning track.

It is the best of all games for me. It frequently escapes from the pattern of sport and assumes the form of a virile ballet. . . . The movement is natural and unrehearsed and controlled only by the unexpected flight of the ball.

-Jimmy Cannon

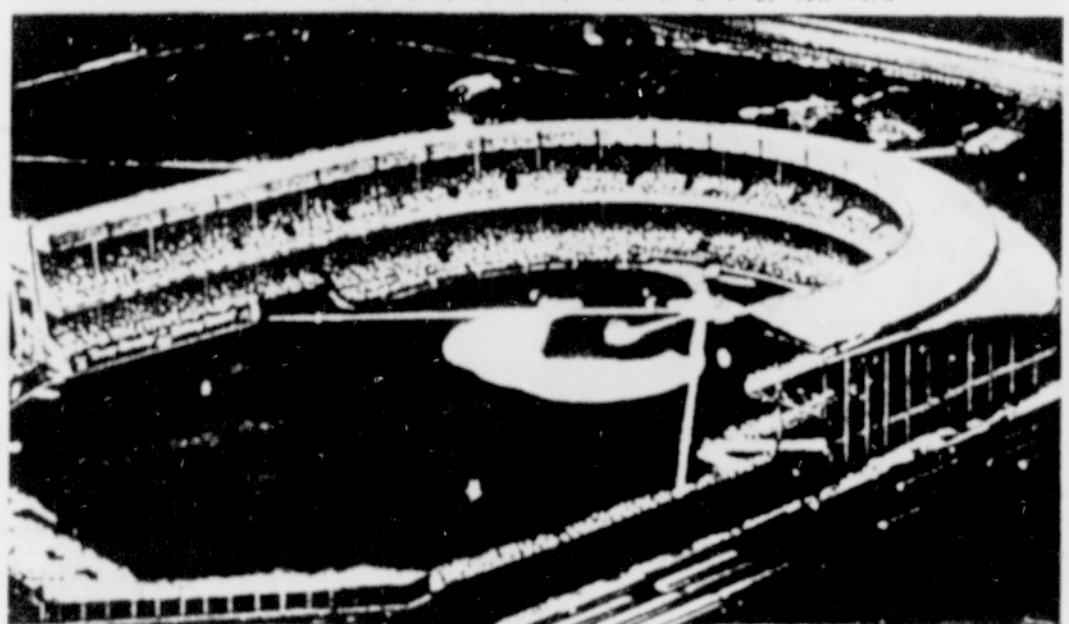


**The Coliseum, L.A.** - The foul territory was enormous on the third base side, and a mere sliver on the first. In the photo, you can see the 42 foot screen erected to keep pop-flies in the park in left field. A lodged fly ball and umpire indecision cost the Braves a pennant here in 1959. The furthest seats were a cozy 700 feet from the plate. Note the crushing attendance.

**Mansfield Club Grounds, Middletown, Conn.** - Demolished, and later the site of the Connecticut Hospital for the Insane. Just wondering.

**Sulphur Dell, Nashville** - The home of the three tiered right field. Located next to the fragrant burning city dump, hence its name. Overflow crowds were parked behind the rope on the third tier, shortening the right field dimensions to 235 feet. Stengel once said he parked one here on a bunt attempt. The nearby Cumberland River was a constant flood threat, and catcher Del Ballinger once made a successful catch of a foul fly after diving into a frigid dugout pond.

A Baseball Game at the Polo Grounds as seen from an airship, New York



**Polo Grounds, N.Y.** - Oh, the lore. The site of Snodgrass' muff, Merkle's bonehead play, Meys' catch off Wertz, and many others. Still this park would be summarily laughed off the agenda if applying for a franchise today. Originally built to provide a playground for the poloing New York aristocrats, it fell to the street-car hoi-polloi hardball set in the early 1880's. Probably more people have watched a ballgame on this plot than anywhere. At one point, it housed two fields concurrently, resulting in fair play balls and frantic fielders scurrying willy-nilly onto adjacent turf. One incarnation of this park had a right field embankment so steep George Gore couldn't climb it, allowing Cap Anson to gleefully stretch a double into an inside-the-park homer. The lines: Right - 257, Center - 500+/-, Left - 280. But, there was a second deck overhang in left that offered a chip-shot home run of 250 feet.

**Dexter Park, N.Y.** - This yard featured a huge incline in right field caused by the internment of a large, unknown horse.

**Pendleton Park, Pendleton, Ohio** - And as if all this isn't enough, the entire Louisville and Cincinnati teams were arrested here in 1891 for playing Sunday baseball.

Next - Part 3

## LateBreakNewsFlash---

Marge (sheeetabe) Schott has spoken again.

Apparently, the "multi-national awareness sensitivity" training program she was forced to endure as a condition of re-instatement didn't take hold.

Her antipathy towards African-Americans, the subjects of the Greater East Asia Co-prosperity Sphere, and the International Zionest Conspiracy are well know and documented. Marge's Farm has got to be an awkward place to work if you're a black athlete.

But now, she's gone too far. After proscribing earrings on the members of the Cincinnati Reds, she said to the Ohio County Treasurers Association the reason was "only fruits wear earrings".

Well, thanks Marge, but I am neither a member of the vegetable kingdom nor am I unsure of my sexual orientation or gender. Unlike you, who looks like a failed genetic experiment from the 1960 Soviet Shot Put Lab and Tractor Works.

Marge, why don't you sell the Reds, get your Cro-Magnon bigot self out of baseball, buy an island far, far away, and take Lon Mabon with you into eternal torment. Yes, and your miserable little dog, too.

We've had about enough out of you.



OLYMPIC BOOK EXCHANGE, INC. "We Buy Books"



PAUL SKEETER

2509 First Street Tillamook, OR 97141 (503) 842-3846



Astoria's Best Kept Secret



No one can make you feel inferior without your consent.

Eleanor Roosevelt