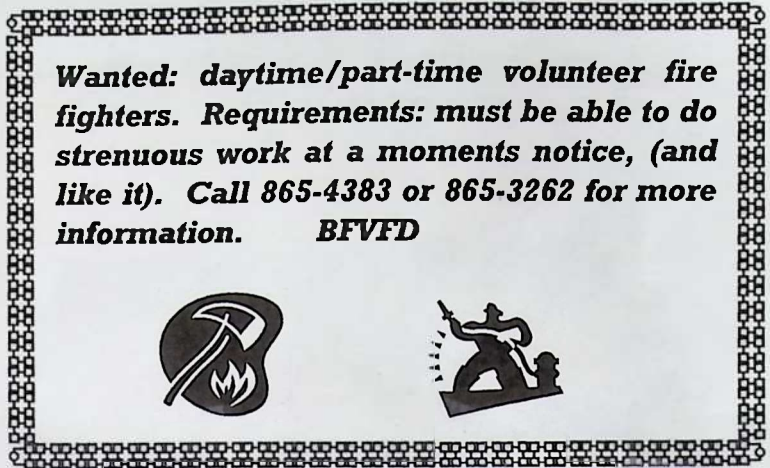




Butte Falls Café

Winter Hours: 7:00 AM - 7:00 PM
Tuesdays - Sundays, closed on Monday.
Good coffee.....good food.
~ 865-7709 ~

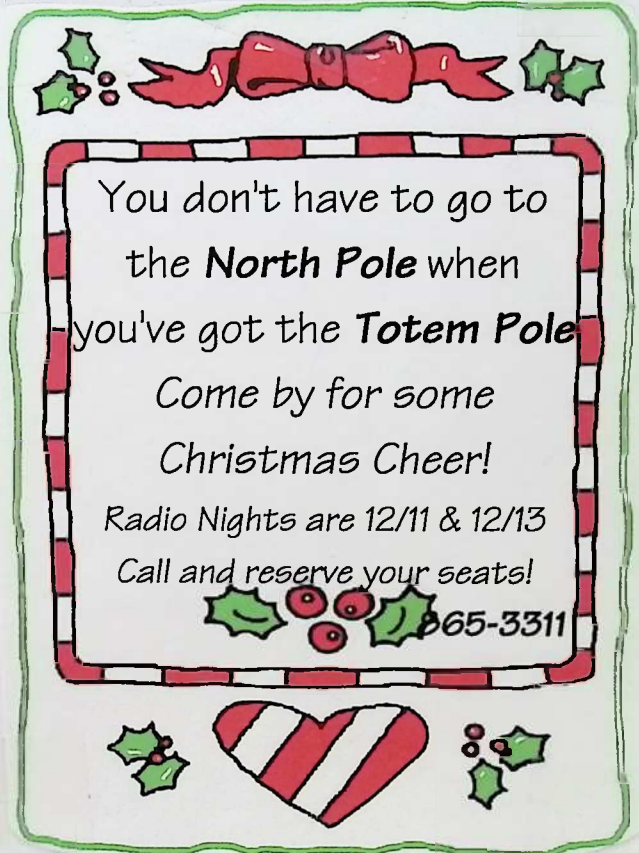
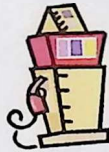


Wanted: daytime/part-time volunteer fire fighters. Requirements: must be able to do strenuous work at a moments notice, (and like it). Call 865-4383 or 865-3262 for more information. BFVFD



Butte Falls Service Station

Hours: Monday ~ Friday
6 AM to 7 PM.
Saturday ~ 7 AM to 6 PM
Closed on Sundays.
We have what you need.....
And customer service is our specialty.
-----865-7800-----

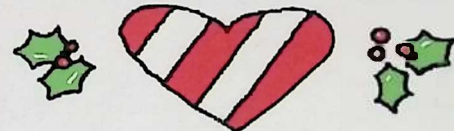


You don't have to go to the **North Pole** when you've got the **Totem Pole**

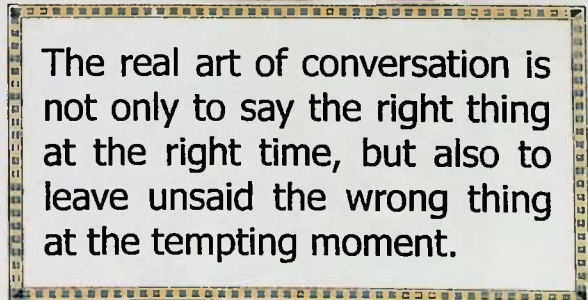
Come by for some Christmas Cheer!

Radio Nights are 12/11 & 12/13
Call and reserve your seats!

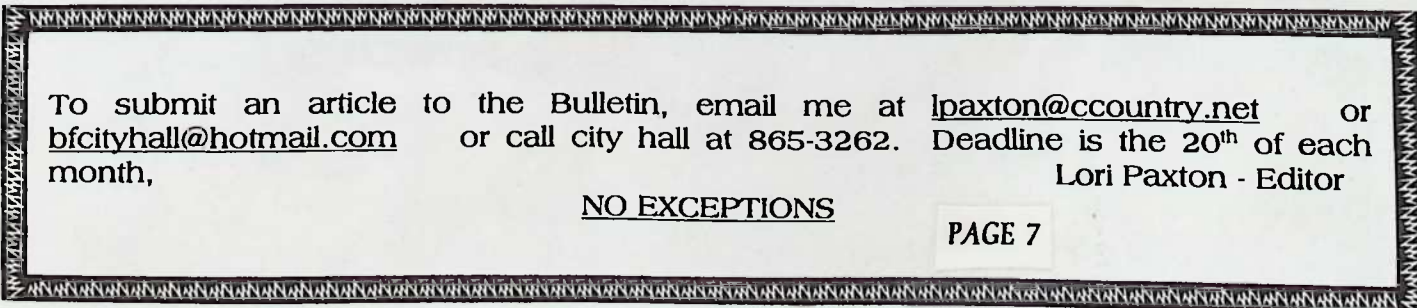
 865-3311



The Butte Falls Assembly of God Church wishes everyone a Merry Christmas! Please join us for Christmas Eve Service from 5:00 to 6:00 PM for the reading of the Christmas Story, special music and refreshments.



The real art of conversation is not only to say the right thing at the right time, but also to leave unsaid the wrong thing at the tempting moment.



To submit an article to the Bulletin, email me at lpaxton@ccountry.net or bfcityhall@hotmail.com or call city hall at 865-3262. Deadline is the 20th of each month,
Lori Paxton - Editor

NO EXCEPTIONS