

Here, There, & Everywhere

ARTFUL AMBLING - Various media will be represented during Second Friday Art Walk in Downtown Cave Junction on Friday, July 13. The list of features and locations is in an advertisement, partially backed by Evergreen Federal Bank, on page 14.

VINEYARD MIXER - Foris Vineyards is the setting for an Illinois Valley Chamber of Commerce mixer Friday, July 13. Hosted by Nelson Maler, a financial adviser with SmithBarney, the get-together will begin at 5:30 p.m. RSVPs are requested by phoning 476-8060 or send them to nelson.r.maler@smithbarney.com. Notes the chamber, "We will learn what is happening within our community as we support and promote our local commerce through communication, advocacy and partnership." Foris is reached by turning at Holland Store and following the signs.

VIOLENCE & ASSAULT - A free 40-hour training course to learn about dealing with domestic violence and sexual assault is offered by Illinois Valley Safe House Alliance. The classes are designed for anyone interested in the field of advocacy or who simply wants to know more. Classes will be held Fridays and Saturdays, July 13, 14, 20 and 21 from 10 a.m. to 5 p.m. with lunch provided. Classes on Tuesday, July 24 and Friday, July 27 will run from 2 to 5 p.m. For more information or to register, phone "Loren" at 592-4147.

'PENNIES FROM HEAVEN' - Ever wanted to help a worthy cause, but felt that you couldn't "afford" to help? Every year the Illinois Valley Christmas Basket Program serves more than 700 valley families, and helps put toys for the children under trees in homes. Every year, all I.V. High School graduating seniors help by filling food baskets and candy bags, and distributing toys. Program leaders continued, "With the rising cost of gasoline, and everything else it seems, we fear we will not have enough time or resources to serve our families and children. This year, we are starting early. We are kicking off the season with a six-month coin drive through Nov. 20. Every little bit helps. Bring pennies (and silver coins if you're feeling rich) to the Illinois Valley Christmas Basket Program in the Family Resource Center at 535 E. River St. in Cave Junction Mondays through Fridays from 7:30 a.m. to 5 p.m. Or phone 592-4149, Ext. 223 or 225."

NOTEPAD - Siskiyou Bluegrass Festival at Lake Selmac is set for Saturday, July 21. Illinois Valley Chamber of Commerce is the sponsor with great help from Home Valley Bank, and Wild River Brewing & Pizza Co. ... **Illinois Valley High School** classes of 1952, 1957 and 1962 were among those that raised the most for the scholarship fund of The Association of IVHS Alumni and Friends and KUHS Alumni Inc. ... **MAMAS (Mothers Against Methamphetamine)** meets on first and third Thursdays in the Josephine County Bldg. in Cave Junction from 7 to 9 p.m. ... **"Ben Rice and the Youth of Blues"** (wireless/interactive Blues) will perform Tuesday, July 17 at 7 p.m. in Riverside Park, courtesy of Grants Pass Chamber of Commerce.

LAST WORDS - *It is dangerous to be right when the government is wrong. (Voltaire)

*Remember, O Lord, thy tender mercies and thy loving kindnesses; for they have been ever of old. (Psalm 25: 6, KJV)

\$9 million for boating projects

Twenty-two boating facility grant requests worth \$9 million, none in Josephine County, were approved by the Oregon State Marine Board June 26.

Funds come from boat title and registration fees, motorboat fuel tax revenues, plus federal funds administered by the U.S. Fish & Wildlife Service including a partnership with the Dept. of

Fish & Wildlife. The latter administers federal Sport Fish Restoration grant dollars).

Other funds for these facility projects come from cash and in-kind contributions from applicants.

Among recipients are Multnomah County, receiving \$3,388,500 in state and federal funds; and Deschutes County, which will receive \$921,107.

Zoning for annexations queried; appeal hinted

Land-use activist claims city not obeying rules

By **SCOTT JORGENSEN**
IVN Staff Writer

Claiming misuse of funds, Hugo resident and land-use activist Holger Sommer has filed a notice of intent to appeal the zoning changes that accompanied the city of Cave Junction's annexation of two properties owned by developer Larry Osborn.

Sommer said that he plans to file his complaint with the state Land Use Board of Appeals (LUBA).

The properties are at 25210 and 25156 Redwood Hwy., and were included in the city's Urban Growth Boundary (UGB) prior to the annexation, which took effect Wednesday, July 11.

Sommer's July 1 complaint was addressed to Wayne Dunlap, a community development program director from the U.S. Dept. of Agriculture's (USDA) Oregon office.

'Misuse' of Funds Listed

"I am writing to you with great concern of misused funds from USDA Utility Grants to the City of Cave Junction," Sommer wrote. "The City of Cave Junction received grant monies for a drinking water treatment plant and a wastewater treatment plant some time ago.

"Both plants were dimensioned such that managed growth of the city could be accommodated. In recent years, however, the growth of the city has been mainly driven by land speculation resulting in non-conforming use of utilities."

In his complaint, Sommer wrote that because Mayor Tony Paulson and City Recorder Jim Polk run most of the city's daily operations, "oversight and control of new developments is non-existing and federal, state, county and city laws are continuously violated."

As an example, Sommer cited the city's wastewater treatment plant, stating that it is "not staffed by an appropriate number of personnel."

Sommer's Assertions Denied by CJ Officials

He went on to claim that the system is "overburdened, even through small storm events because storm water enters the sewer system. This problem is mainly due to infiltration of storm water in the aging sewage system in the old part of the city, but also seems to be compounded by new developments draining storm water in to the sewer system, rendering the treatment process ineffective."

Sommer broadened his accusations against city offi-

cials in later sections of the e-mail complaint.

"The uncontrolled and mismanaged, rampaging sprawls together with incompetence, special interest and open conflict of interest of city officials has placed the sane operation of these essential utilities of Cave Junction in jeopardy," Sommer wrote.

Accusation About City Budget Mismanagement

Additionally, Sommer alleged that the city "also has not been able to manage its budget appropriately."

"An audit of the city finances should be conducted because a recent amendment of the 2006-2007 budget and the approval of the 2007-2008 budget give the impression that the same revenue is counted twice," he wrote.

Paulson denied Sommer's assertions, and said that the state Dept. of Environmental Quality must sign off on any proposed subdivisions.

"He makes a lot of accusations with no facts," Paulson said.

Property owners within a city's UGB "have a right to annex in," Paulson said.

As for city finances, Paulson said that those figures face regular independent audits.

Mayor Notes City Meeting Mandatory Audits

"That's something every government agency has to have," Paulson said. "It's not something we can get out of."

He said that the new developments in the city are up to code, and that any potential problems would stem from older structures.

"There was a lack of rules back then," Paulson said, adding that there also were fewer state and federal regulations.

The mayor rejects Sommer's arguments regarding the city's wastewater treatment plant, stating that it has a "level four treatment operator."

The city is meeting its legal requirements in operating the facility, Paulson said, while noting that financial limitations prevent it from acquiring an ideal number of employees.

"Would we like more personnel? Yes," Paulson said. "But we can only do what the budget allows."

On Monday, July 2, Sommer received an e-mail reply from USDA Community Program Specialist Clem Singer. Singer was one of the original recipients of Sommer's complaint.

In the July 2 e-mail, (Continued on page 8)



"If your dog is overweight, YOU need more exercise!"

Now forming: 'Dog Walking Group' for well-mannered, licensed and neutered dogs & their people.

3 to 5 miles; Mondays, Wednesdays, & Fridays; 5:30 to 7 p.m.

Heidi 592-5142

Kerby Belt Lodge

BREAKFAST

Saturday, July 14, 8 to 11 a.m.
Jubilee Park



Eggs-Bacon
Taylor's Sausage
Hash Browns
Biscuits & Gravy
Juice-Coffee-Tea

Proceeds support youth activities & scholarships

Wild Foods & Fermentation Workshop

July 19

10am - 5pm

\$60 - \$35 (sliding scale)

A limited # of partial work trades are available.
Call today!

Fermented foods help us adapt to shifting conditions and lower our susceptibility to disease. Fermentation is a way of incorporating the wild into your body.

We will spend time outdoors, learning some local plants and harvesting edibles and medicinals. Together we will make kimchi, idli, herbal elixir meads, and more. The techniques for fermenting are simple and flexible.

Don't Miss

Bicycle Tour of Takilma Gardens on Aug 4
or
Putting Up Food for Winter on Sept 30

Spinal Living Center is dedicated to creating a more sustainable community in the Illinois Valley. Yearly memberships are available for \$20. Contact us at: 541-592-3642, spiral@frontiernet.net



ROTARY

IS COMING

TO ILLINOIS VALLEY. . .

. . . and you're invited to join us.

Tuesdays at Noon at
The Junction Inn

406 S Redwood Highway, Cave Junction

Note: Most Rotary meetings last ONE hour.

Come and find out how Rotary, one of the largest and oldest service organizations in the world, is the civic organization of choice for so many of your friends and colleagues.

Learn about how YOU can be part of an organization that has played a key role in the world and about local Rotarians. We'll tell you about Rotary peace programs, humanitarian efforts and much more.

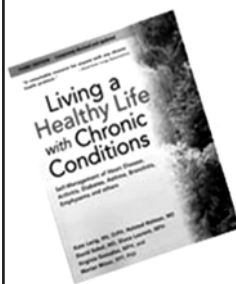
We hope you will join us.

For more information, phone 476-8060.

OSU EXTENSION SERVICE & COMMUNITY PARTNERS

LIVING WELL (chronic disease self-management)

Are you or a loved one living with **arthritis, cancer, heart disease, diabetes, stroke, asthma,** or other **chronic diseases?**



Stanford University designed the *Living Well With Chronic Health Problems* workshops to help those who have significant health problems learn how to take control of their care in order to live happier and healthier lives.

Sign up today (6 classes in each series)

No charge - Registration required - Enrollment limited

Contact: **Bernadette, 864-9611** www.sohealthyoregon.org

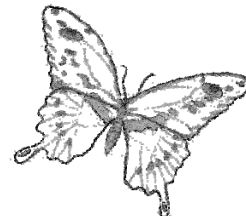
Class beginning: **July 12, Thursdays, 9:30 to Noon**

All workshops will be held at The Washington Outpatient Center, 1505 N.W. Washington Blvd., Grants Pass.

Brought to you through a partnership of local health and human service providers in collaboration with the Rogue Valley Council of Government Senior and Disability Services.

Want to make a difference in your community?

Illinois Valley Safe House Alliance is recruiting volunteers.



Your chance to help create a safer community and provide support and guidance to your neighbors in need.

The Alliance is starting a volunteer program on July 13, 2007.

We are looking for dedicated volunteers like you to participate.

The program includes 40 hours of professional training to prepare you to make a difference.

Phone Loren Yarbrough at 592-4147 to reserve your space or to find out more about how you can help.



More than a safe place