



REAR-ENDER IN CAVE JUNCTION - Four people suffered minor injuries at Redwood Hwy. and Hamilton Lane on Sunday, June 27 at 5:42 p.m., said Josephine County Sheriff's Office (JCSO). Those in the car were identified as Jessica Mason, 17; Jillian Yable, 18; and Caylee Griffith, 16, all of Cave Junction. They were stopped to make a left turn from the highway onto Hamilton, when a pickup truck driven by CJ resident

Sammy Henderson, 78, struck the car, said JCSO. The pickup ended up about 50 yards south of the point of impact. American Medical Response transported all four people, and they were treated and released at Three Rivers Community Hospital in Grants Pass. The girls subsequently have returned as outpatients because of neck and back pain. Traffic was held up and rerouted for approximately an hour due to the crash.



Country Breakfast

I.V. Senior Center

520 E. River St.

Saturday, July 3 - 8 to 11 a.m.

**Biscuits & Gravy * Pancakes
Eggs * Bacon
Sausage * Coffee, Milk, Juice**

**Adults - \$4
Children 12
& under - \$2.50**



Jo County jobless rate decreases to 6.6% during May

Josephine County employment rose by 330 jobs in May 2004, said Oregon Employment Dept. (OED).

The unemployment rate in Josephine County fell to 6.6 percent in May from 7.4 percent in April.

Employment growth is expected to remain strong in coming months as more hiring plans have recently been announced by a number of local employers, according to OED.

During the past year, employment in Josephine County rose from 29,123 employed in May 2003 to 30,387 in May 2004.

Most of the employment gains in May occurred in the tourism-dependent leisure and hospitality industry, which includes restaurants, hotels, drinking establishments, and amusement and recreation services; adding nearly 200 jobs. More than

50 jobs were attributed to construction, 60 in retail, and 30 manufacturing jobs.

Most of the employment losses since May 2003 occurred in government sectors. Local education employment decreased by 160 jobs.

	May 2004	April 2004	May 2003
Josephine County	6.6	7.4	9.0
Jackson County	6.0	6.4	7.3
Oregon ('raw')	5.5	6.9	8.2
Seasonally Adjusted	6.8	6.7	8.6
United States ('raw')	5.3	5.4	5.8
Seasonally Adjusted	5.6	5.6	6.1

THE MARKET

SOUTHERN OREGON'S USED CAR & TRUCK HEADQUARTERS

\$9,999 & UNDER

- 2000 Ford Taurus** \$8999 **SOLD**
16958, S.E. Wagon, loaded
- 2000 Mercury Sable** \$8999
16971, LS, moonroof, loaded
- 1993 Chrysler Imperial** \$5999
16980, 4 door, loaded
- 1996 Ford Crown Victoria** \$6999
16541, auto, air, all power, tilt, cruise
- 1996 Ford Taurus GL** \$5999 **SOLD**
16746, loaded
- 1997 GMC Jimmy** \$9999
16571, 75k mi, auto, 4x4, air, all power, tilt, cruise

- 1995 Chevrolet Caprice** \$6999
16759, Classic, 4 dr, leather, loaded
- 1998 Ford Ranger** \$6999
17040, Short Bed, XLT, 4x2
- 1995 Mercury Grand Marquis** \$7999
17029, LS, 4dr, loaded
- 2003 Ford Ranger** \$9999
P16750, XL, 4731 mi.
- 1999 Dodge Dakota** \$8999
17051, Long bed 4x2, V6, 5 sp, ps, air
- 1999 Ford Mustang** \$9999
17060, Coupe, loaded, red, 48k

Mock's Used Car Center

- 1993 Chrysler Imperial** \$5999
16980, 4 door, loaded
- 1996 Ford Taurus GL** \$5999 **SOLD**
16746, loaded
- 1996 Ford Crown Victoria** \$6999
16541, auto, air, all power, tilt, cruise
- 1995 Chevrolet Caprice** \$6999
16759, Classic, 4 dr, leather, loaded
- 1995 Mercury Grand Marquis** \$7999
17029, LS, 4dr, loaded
- 2000 Ford Taurus** \$8999 **SOLD**
16958, S.E. Wagon, loaded
- 2000 Mercury Sable** \$8999
16971, LS, moonroof, loaded
- 1999 Ford Mustang** \$9999
17060, Coupe, loaded, red, 48k
- 2003 Ford Focus** \$11499
P16916, SE, fully loaded
- 2000 Pontiac GT Grand Am** \$11999
P16679, 4 dr, loaded
- 2001 Ford Taurus Wagon** \$11999
P16733, loaded
- 2002 Chevrolet Cavalier** \$11999
P16900, LS, Sport Coupe, loaded
- 2002 Dodge Intrepid** \$11999
16932, loaded, 20k
- 2003 Ford Taurus** \$12500
P16786, SE, loaded
- 2002 Oldsmobile Alero** \$12999
P16902, GL, loaded, 28k mi.
- 2003 Ford Focus** \$12999
P17010, Wagon, loaded
- 2003 Ford Focus** \$13999
FC315, SE, 4 dr, 5 spd, air, low miles
- 2003 Ford Mustang** \$14999
P16965, Coupe, loaded
- 2003 Ford Taurus SES** \$16999
P17001, 24 valve, leather, moonroof, loaded
- 2001 Lincoln Town Car** \$18999
16909, Signature Series, loaded
- 2003 Lincoln Town Car** \$27999
P16968, Executive
- 2002 Lincoln LS** \$29999
P16557, loaded
- 2003 Lincoln Town Car** \$29999
P16969, Signature
- 2003 Ford Thunderbird** \$32999
17015, Convertible+Hardtop, loaded, 3000 mi.

Mock's Used Import Center

- 2002 Mazda Protege** \$10999
P17033, loaded
- 1995 BMW** \$11999
17014, 5 series, 525i, 4 dr, loaded
- 2003 Mazda Protege** \$11999
P17034, loaded
- 2002 Toyota Rav 4** \$17999
16905, 4x4, 4 dr, loaded
- 2001 Honda Passport** \$21999
P16863, 4x4, loaded
- 2001 Toyota Tundra** \$21999
17025, SR5, 4 dr, 4x4, loaded
- 2002 Toyota Tacoma** \$23999
17013, 4 dr, 4x4, Limited, loaded
- 2004 Mazda Tribute** \$23999
P17032, 4x4, leather, dvd, loaded
- 2003 Mazda MPV** \$23999
P17038, ES, leather, loaded, 6000 mi.
- 2004 Mazda RX-8** \$32999
16897, loaded, 2000 miles

Mock's Used Truck Center

4X2s: Pickups, Mini & Passenger Vans

- 1998 Ford Ranger** \$6999
17040, Short Bed, XLT, 4x2
- 1999 Dodge Dakota** \$8999
17051, Long bed 4x2, V6, 5 sp, ps, air
- 2003 Ford Ranger** \$9999
P16750, XL, 4731 mi.
- 1998 Plymouth Grd Voyager** \$10999
P16466, SE, auto, 7 pass, air, all power, tilt, cruise
- 2003 Chevrolet S-10** \$11999
16982, 5 spd, ps, air, 5100 miles, 4x2
- 2000 Ford F-150** \$12999
P16858, XLT, short bed, 4x2, loaded
- 2000 Chevrolet** \$12999 **SOLD**
P16977, 4x4, auto, ps, air
- 2001 Dodge Dakota C. Cab** \$13999
P16516, flatbed, 19K miles, 5 spd, air, ps, tilt, cruise
- 2001 Chevrolet Astro** \$14999
17056, Minivan, LS, loaded
- 2003 GMC Sierra** \$15999
17024, 1/2 ton, 4x2, 16,000 mi
- 2002 Chrysler Entry** \$16999 **SOLD**
P16714, mini van, fully loaded
- 2003 Ford E-150 Van** \$19999
P16950, 8 passenger, loaded

4X4s: Pickups & Sport Utility Vehicles

- 1997 GMC Jimmy** \$9999
16571, 75k mi auto, 4x4, air, all power, tilt, cruise
- 1998 Dodge Ram SLT** \$15999
P16529, Club Cab, 4x4, loaded
- 2001 Ford Explorer** \$16999
P16912, 4 dr, 4x4, XLT, loaded
- 2001 Ford F-250** \$16999
16994, SuperDuty, S.Cab, 4x4, XL
- 1998 Ford F-150** \$17999
P16889, S.Cab, 4x4, XLT, loaded
- 2001 Dodge Durango** \$17999
P15538, SLT, 4x4, auto, air, all power, tilt, cruise, 3rd seat
- 1999 Chevrolet Suburban** \$18999
P16822, LT, 1500 Sport Utility, 4x4, loaded
- 2001 Ford Explorer** \$18999
17058, Sport Trac, 4x4, loaded
- 2003 Ford Ranger** \$19999
P16962, 4x4, loaded
- 2002 Ford Ranger** \$19999
P16752, S.Cab, 4x4, XLT, loaded
- 2002 Ford Ranger** \$19999
16942, S.Cab, 4x4, Edge, loaded
- 2003 Ford Escape** \$19999
P16964, 4x4, XLT, loaded
- 2003 Ford Escape** \$19999
P16999, 4x4, XLT, loaded
- 2001 Jeep Grand Cherokee** \$20999
P16861, 4x4, loaded
- 2002 Ford Explorer** \$20999
16924, 4dr, XLT, 4x4, loaded
- 2000 Ford Expedition** \$21999
P16963, Eddie Bauer, loaded
- 2001 Jeep Grand Cherokee** \$21999
P16864, 4x4, loaded
- 2001 Ford F-150** \$21999
P16998, 4x4, SuperCrew, loaded
- 2003 Ford Ranger** \$21999
P16751, S.Cab, 4x4, XLT, loaded
- 1999 Ford F-350** \$22999
16957, 4x4, CrewCab, loaded
- 2003 Mercury Mountaineer** \$23999
P16664, loaded, 4x4, 3rd seat
- 2001 Chevrolet Suburban** \$24999
P16910, 4x4, LT, loaded
- 2001 Ford F-250** \$25999
16704, SuperCab, XLT, 4x4, 5 spd, loaded, 17k mi.
- 2002 Chevrolet** \$25999
16937, 4x4, 1500, LS, loaded
- 2003 Ford Explorer Spt Trac** \$25999
P16911, XLT, 4x4, loaded, 12k
- 2001 Ford Expedition** \$26999
P16737, 4x4, Eddie Bauer, loaded, white
- 2000 Ford F-350 Lariat** \$27999
P16821, SuperDuty, 4x4, CrewCab, loaded
- 2001 Ford F-250** \$29999
P16467, SuperCab, Lariat, 4x4, diesel, leather, loaded
- 2003 Ford Expedition** \$31999
P16777, 4x4, XLT, loaded
- 2000 Ford F-250 S.Duty** \$31999
17016, 4x4, CrewCab, Lariat, Turbo diesel
- 2002 Ford Excursion** \$34999
P16168, 4x4, Limited, loaded
- 2003 Ford Expedition** \$35999
P16773, 4x4, Eddie Bauer, TV, loaded
- 2002 Ford F-350 S.Duty** \$36999
17017, CrewCab, 4x4, Lariat, Turbo diesel, loaded
- 2002 Ford F-350 S.Duty** \$37999
P17011, CrewCab, 4x4, Turbo diesel, Dually, Lariat, loaded
- 2003 Lincoln Navigator** \$44999
P16355, fully loaded
- 2004 Ford Excursion** \$45999
17009, 4x4, Limited, loaded
- 2003 Hummer H2** \$49999
P16778, 4x4, loaded

Questions and Answers
by Christina Snell
Executive Director at Lovejoy Hospice



In order to help you become better informed about hospice services, Lovejoy Hospice is publishing this question and answer column every month. Look for us on the fourth Wednesday of every month in 'Illinois Valley News.' If you have questions you would like answered in this column, phone or Email us at the numbers below.

Question: Why would hospice stop their visits to a person?

Answer: Here are a few possible reasons: The person may choose to end hospice care; the symptoms of the disease may be under control and the person improves to the point that they really no longer need hospice care; the doctor may feel that their life expectancy is longer than six months; they move from that hospice's service area. (In this case they would be referred to a hospice in their new location); The person chooses not to change things in their environment that cause a safety issue for the patient or hospice staff.

SPECIAL PURCHASE! Just Arrived!

2003 Ford Taurus SE model



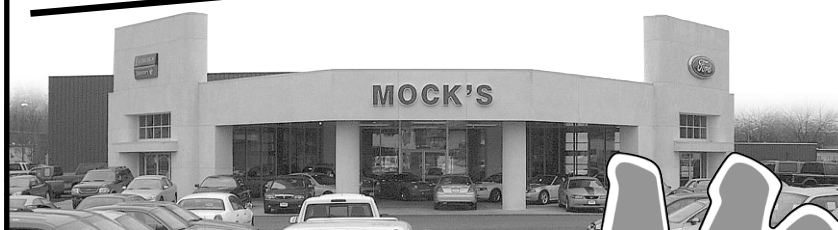
These vehicles sold new with an msrp as high as \$21,500 less than a year ago! All vehicles are fully equipped and come with:

\$12,500 your choice first come first served
prior daily rental car

97 to choose from!
at this price
(#P16786 shown)

- automatic transmission
- power steering
- air conditioning
- power windows
- power door locks
- cruise control
- tilt steering wheel
- power seats
- alloy wheels
- much more

Not one penny down on approved credit!



GRANTS PASS
913 SE 6TH STREET
476-6656

Mock's
SEE OUR USED CARS ONLINE WWW.MOCKS.COM

toll free
1-800-NEXT CAR
6398-227
MEDFORD 779-6273

110 POINT INSPECTION
On Every Mock's Used Vehicle!


The Heart of Caring
939 S.E. 8th St.
474-1193 or 1-888-758-8569
Email:
Christina@lovejoyhospice.org