

## Wildfire protection top priority

By SHANE WELSH  
Staff Writer

When it comes to fire safety, "You are your best line of defense."

So said De Spellman, Illinois Valley fire prevention coordinator, during a community fire plan meeting Wednesday, May 19 at the county building in Downtown Cave Junction.

"When it comes to the distance (you should clear combustible materials) around your home," said Spellman, "I would suggest you put your back against your house, put a garden hose in your hand, and then say to yourself, 'Where do I want that fire?'" said Spellman.

Members of the Illinois Valley Fire District (IVFD) met with more than 30 community members to kick off the first of many scheduled meetings to discuss how I.V. residents can better protect their homes against wildfire damage.

Jerry Shaeffer, IVFD marshal, said, "In 14 years, I have seen a lot of damage and destruction to homes from wildfires, as well as fires spreading from homes into wildlands. This plan is a concept we need input from the community on in order to make it work. We are trying to design this specifically for this community."

The overall idea of the community fire plan isn't to force property owners to cut down trees or clear their land, but to offer the most viable solutions to prevent the potential for fire damage to a home should a fire occur in the vicinity of the home.



**PHYSICAL FOR FIRE - Illinois Valley firefighters must periodically undergo agility and stamina testing. Such was the case at Jubilee Park in Cave Junction on Saturday, May 29. Firefighters had to haul hoses; rapidly and accurately unroll a 5-inch hose; move, place and climb a ladder; and haul a wooden sled with cinder block on it. The firefighters had to don full gear as part of the drill, and complete all aspects of the testing in an appropriate length of time.**

Bruce Bartow, Josephine County Community Development director, indicated that the Illinois Valley needed an organization within the community that could outlast existing funding sources in order to help maintain a working fire plan.

"The obvious answer is the fire district," said Bartow. "The Illinois Valley Fire District is the largest in Josephine County. What we're working on at a county level is combining skills and resources to work at ways to implement ideas on the ground for individual fire districts."

"The county will help coordinate county, state and federal agency efforts, but the actual implementation of a fire plan will be backed through your fire district," he said.

Public meetings are scheduled in 2004 from 6:30 to 9 p.m. at the following locations:

\*Selma - June 9, at Selma Community & Edu-

cation Center, 18255 Redwood Hwy.

\*O'Brien - June 16, at IVFD Fire Station 3, 33054 Lone Mountain Road.

\*Takilma - July 7, at Takilma Dome School, 9367 Takilma Road.

\*Kerby - RCC Kerby Belt Bldg., 24254 Redwood Hwy.

\*Holland - Aug. 11, IVFD Fire Station 4, 5465 Holland Loop Road.

\*Cave Junction, Aug. 11, County Building, 102 S. Redwood Hwy.

Tracy Katelman, I.V. fire plan coordinator, said the idea of the public meetings is to introduce people of the valley to the Josephine County Integrated Fire Plan and get input and feedback from residents as to what they feel is the most important wildfire issues that need to be ad-



ressed in their communities.

Once all data has been gathered and reviewed, a plan will be designed that will best fit the needs of unique wildland areas and rural communities.

There will be a public I.V. fire council meeting in September to outline and discuss ideas that could be developed into the new fire plan. The first draft of the plan is scheduled to be developed by November 15. There will be a community meeting in January, 2005 to review the draft before beginning implementation on March 1, 2005.

Information about meetings and the fire plan can be found online at [www.co.josephine.or.us/wildfire/index.htm](http://www.co.josephine.or.us/wildfire/index.htm), or by contacting De Spellman at 592-2225.

## IVHS class scheduling for all students set for June 4

For arena class scheduling at Illinois Valley High School on Friday, June 4, students will report to school at their appropriate scheduling times.

Those students who must ride a bus should report to the cafeteria until their scheduling time. Students will not be allowed to schedule before their allotted time.

Next year's schedule for grades 10, 11 and 12 is alphabetically listed using the first letter of the stu-

dents last name at the following times:

\*Seniors - A to L, 8:30 to 9:15 a.m.; M to Z, 9:15 to 10 a.m.

\*Juniors - A to L, 10 a.m.; M to Z, 11 a.m. to 12 p.m.

\*Lunch - Noon to 12:30 p.m.

\*Sophomores - A to L, 1 to 2 p.m.; M to Z, 2 to 3 p.m.

For those students who do not attend arena scheduling a counselor will prepare a schedule for them.

## To crash is human, to err is why

Human error is the single, most common cause of traffic crashes, said Oregon Driver and Motor Vehicle Services (DMV).

DMV added that leading factors in crashes are:

\*Excessive speed.

\*Lack of concentration.

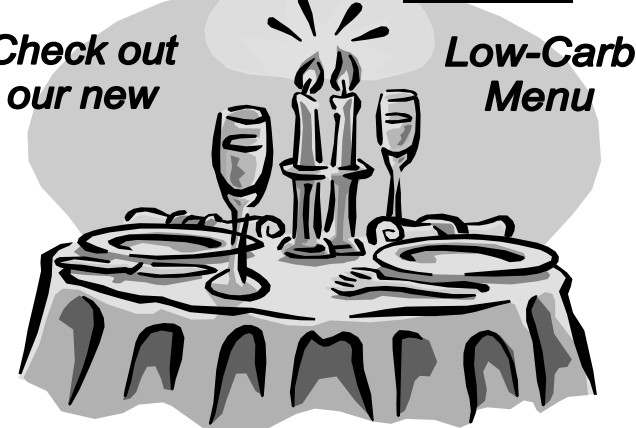
\*Improper evasive action.

"Your mental and emotional state, as well as your physical condition, affects the way you drive," said DMV.

### Art's Red Garter Steak House & Saloon LOW CARB DIETERS! 'Steak & Fish are 0 carbs!'

Check out  
our new

Low-Carb  
Menu



Open 5 to 9 p.m. - Restaurant parking in rear  
126 S. Redwood Hwy., CJ 592-4222 or 592-2892

### DO YOU WANT TO MAKE A DIFFERENCE IN THE LIFE OF A CHILD

Southern Oregon Head Start and Early Head Start provide comprehensive services to children 0 to 5 years of age and their families, who are low-income or the child has a disability. We have the following employment opportunity:

Early Head Start Toddler Specialist  
32 hours per week/Cave Junction  
Completion of B.A. or A.A. in Early Childhood or related field with a minimum of 6 classes in early childhood or commitment to enroll in college classes leading to an A.A.S. degree in Early Childhood. Experience must include work with diverse communities and low-income children and families.

In order to be considered for this position a completed application and resume must be submitted by June 7, 2004. Interviews will be held in Cave Junction on June 10, 2004. Applications and job descriptions are available at the Cave Junction Early Head Start Center at 553 E. River Street and at the Main Offices, 1001 Beall Lane, Central Point and at 223 SE M St., Hamilton House Annex, Grants Pass from 8 a.m. to 5 p.m. A complete list of qualifications and requirements are listed in job descriptions. Applications and resumes may be submitted in person, by mail, or by fax. To mail an application please send it to SOHS, Attn: Human Resources Assistant, P.O. Box 3697 Central Point, OR 97502. To fax please send to 541-245-9188, Attn: Human Resources Assistant. Information on other employment opportunities can be found by going to our Website at [www.socfc.org](http://www.socfc.org) or at the Central Point or Grants Pass Office. EEO

Publish June 2, 2004

### DAVID ANDERSON EXCAVATING

CCB #159580 - Licensed General Contractor  
30 years experience in water, sewer & pipeline construction, brush clearing, septic installation and utility line trenching  
Ready to Dig & Aiming to Please 24 hours a Day



Res. 1-541-597-4486  
Phone 1-800-297-0335



### Rogue Community College Small Business Development Center

#### HELP FOR GROWING YOUR BUSINESS

\*Confidential business consultation-free of charge

\*Now offering counseling in Illinois Valley

\*Affordable business-related training

\*Comprehensive business library

214 SW 4th Street, Grants Pass - 1-800-411-6508 Ext. 7494

Phone today - let us help you succeed  
<http://www.roguecc.edu/sbdc>

### Oregon Classified Advertising Network

YOUR AD WILL RECEIVE CLOSE TO 2,000,000  
EXPOSURES FOR ONLY \$230!

Oregon Classified Advertising Network is a service of the Oregon Newspaper Publishers Association.

Week of May 31, 2004

Illinois Valley News  
321 S. Redwood Hwy., Cave Junction, OR. 97523

#### Building Materials

M & W CUSTOM pole buildings: 20x30x10, \$2,744; 24x36x10, \$3,491; 30x48x10, \$4,887. F.O.B., many other building sizes. Kits, built, financing. Free brochure. 1-800-547-1714, [www.MWBSC.com](http://www.MWBSC.com).

#### Business Opportunities

GUMBALL GOURMET has a franchise business opportunity available in the Oregon area. Be your own boss. For more information, please call 866-486-2255.

ALL CASH candy route. Do you earn \$800 in a day? Your own local candy route. Includes 30 machines and candy, all for \$9,995. 1-800-814-6047.

#### Employment Opportunities

DRIVER -- NOW earn more! Increase in pay package. Contractors and company needed. Flatbed, refrigerated, tanker. Over-the-road. Some regional. Commercial Driver's License training. 1-800-771-6318, [www.primeinc.com](http://www.primeinc.com).

NURSERY SPRAY supervisor. Spray and evaluate applications on nursery stock, oversee employees. College degree and/or work experience required. Private Applicators license required. Good future and benefits. Klupenger Nursery, fax 503-678-1205, e-mail [dan@klupenger.com](mailto:dan@klupenger.com).

DRIVERS... NEW SPEED - 65mph! \$2,500 experienced driver sign-on bonus. New trainee pay. Van, flatbed, autohaul and heavy haul. CDL training available. Swift Transportation, 1-800-800-4400, [www.swifttruckingjobs.com](http://www.swifttruckingjobs.com).

ATTENTION DRIVERS: Average driver pay \$46,694.27! Two years flatbed experience and CDL-Class A required. Great home time. Free benefits. Central Oregon Truck, 866-394-1944.

DRIVERS WANTED! Davis Transport: Sign-on bonus, long haul, benefits, excellent pay, no haz-mat. Paid weekly. Flatbed training provided. Owner-operators welcome! 1-866-728-0120 [www.davistransport.com](http://www.davistransport.com).

TRUCK SCHOOL. US Truck Driving School, since 1959. 3 week - 160 CDL program. Financing available OAC. Weekly starts, tuition reimbursement. Call Phil or Bob: 1-866-268-7854, Troutdale, Oregon.

#### Miscellaneous for Sale

FREE 4-ROOM DirecTV system, including installation. 125+ channels from \$29.99/month, including locals. 3 months HBO & Starz 2 for 1. Shipping & handling. Restrictions apply. 1-800-261-3543.

AUCTION SATURDAY June 26, Wilbur, WA. Home sites with Lake Roosevelt views, many absolute. Margaret Segrest, Broker; Jerry Craig King #0002385; J.P. King Auction Company, Inc. #0002099. Phone 800-558-5464.

WANT TO REACH nearly 2,000,000 Oregonians? Try the Oregon Classified Advertising Network! Call this paper today, and ask about an OCAN!

## The Kerby Transfer Station

is open

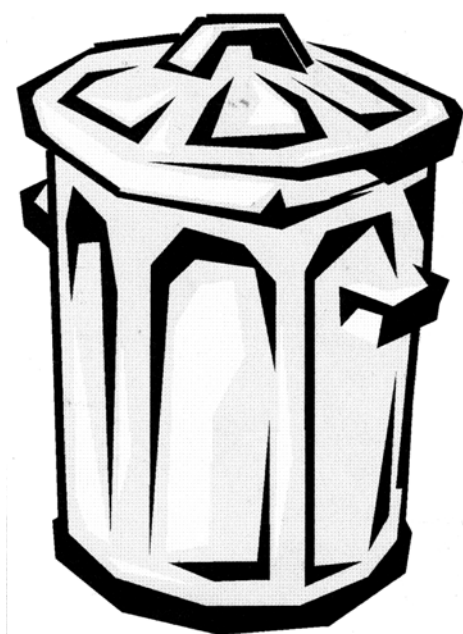
Saturdays:

9:30 a.m.

to

2:30 p.m.

Hours: Mondays - Saturdays  
9:30 a.m. to 2:30 p.m.  
For more information  
phone (800) 922-1025



## Southern Oregon Sanitation